


# AMBITIONS JOURNEYS ADVENTURES PETROC™

**GUIDE TO COLLEGE COURSES IN TIVERTON 2012/13**





**Front page models:** Petroc students Ashley Knight, Charlotte Austin and Sophie Greenway.  
**Reverse:** Petroc students Alice O'Grady and James Gee.

## **WHAT ARE YOU LOOKING FOR?**

A change. A challenge. The chance to do something completely different.

Petroc in Tiverton offers all of that and more; a new Sixth Form with high quality A Levels, specialist academic and vocational qualifications and caring, supportive environments to study and achieve in.

Whether you're getting ready for university, training while working, or finding a different perspective on life, we're here to help fulfil your hopes and ambitions.

We're all about giving you the time, space and resources to see things clearer, and helping identify what you want to do and why. We're here to help you be the best you can be, at whatever you choose to do.

**WHATEVER YOU'RE LOOKING FOR,  
THE ADVENTURE STARTS HERE**

**WELC**



**COME**



# BROWSE DECIDE APPLY

Choosing the right course at the right college can be a tricky decision, or you may know exactly what you want to be. Either way, we have a team of expert advisors on hand. Whatever you are looking for – whatever your hopes and ambitions, whether you're just about to leave school or looking for a new direction – Petroc can help.

## **PETROC IN TIVERTON**

Petroc's Tiverton Campus is a great place to be. The Campus sits alongside the River Exe, on the edge of Devon's rolling hills. Meanwhile, Tiverton offers fewer distractions than bigger towns and cities, which means you can focus on your studies in a calm, caring, supportive environment. Our buildings are modern, bright and welcoming and our facilities – including the Devotion hair and beauty salons, state of the art science labs, refurbished classrooms, purpose-built construction workshops and a new fitness suite – are second to none.

As well as the main campus, on Bolham Road, our specialist motor vehicle centre is in a unit on the Tiverton Business Park. Music courses are based in Exeter, at the Academy of Music and Sound.

We're smaller than most colleges and we consider that a distinct advantage. It means that you'll never get lost in the crowd. Group sizes are small and our dedicated team of lecturers can spend more time with you, to help you achieve the results you need.

# WE'LL STAY WITH YOU AND BE HERE WHENEVER YOU NEED US.

As well as the full time courses detailed in this guide, we offer degrees, evening classes and work with hundreds of employers to deliver essential training. And we know there's more to life than studying, so there are hundreds of things you can do while you're at college – some of which you can read about in this guide.

Everything we do is aimed at giving you the best possible learning and life experience, with the highest quality teaching, resources and facilities.

To find out more about Petroc, call us on **01884 235330**, visit our website: **www.petroc.ac.uk** or come and see what we offer at one of our information, advice and guidance events at our Tiverton Campus, where you can meet the team and have a look around the College.

#### **Information, advice and guidance events:**

Wednesday November 9, 2011, 3.30 to 7.30pm

Wednesday January 11, 2012, 3.30 to 7.30pm

## THE RIGHT COURSE FOR YOU.

#### **Apply**

You can apply online at **www.petroc.ac.uk** from October 2011\* and you'll receive confirmation of your application via email. If you need any help with your application, come in and see us, or call The Guidance Centre on 01884 235330. We always encourage students to apply by the end of January, to guarantee places on the courses you want but if you haven't made a final decision by then, you can apply at a later date.

#### **Interview**

Soon after we confirm your application, we'll send you a letter inviting you to interview. It's nothing to worry about; just a chance for us to get to know more about you and your learning needs, and a chance for you to find out more about life at Petroc and your chosen course.

If you can't make the date or time we ask you to come in for your interview, let us know and we'll arrange a more convenient appointment.

#### **Offer**

Following your interview, you will receive a letter offering you a place at Petroc. It'll specify any agreed conditions, such as the exam grades you need and the subjects required (eg five GCSEs at grade C or above, including English and Maths, for most A Level courses.)

#### **Updates**

Once you've accepted your offer of a place at college, we'll send you regular updates and reminders, by email and in the post; from book lists and summer homework (for some subjects) to newsletters and details of your induction days. You can also keep track of what's going on at Petroc online, via our website **www.petroc.ac.uk**, Facebook page (search for 'Petroc Official'), Twitter and YouTube.

#### **Induction**

You'll learn even more about Petroc and what we have to offer at your induction days, when you start college, in September 2012. As well as meeting your personal tutor and tutor group, you'll find your way around and start settling in.

\*Paper copies of our application form are available if you don't have internet access.



Photo by: CHARLOTTE SQUIRE

# ADVANCE PROGRESS ACHIEVE

Wherever you want to go in life,  
Petroc can help you get there.

We're here to bring out the best  
in people. That means giving  
you the opportunity to achieve  
anything and everything you set  
your mind to.

Wherever you are on the learning  
ladder, the only way is up.  
And we have a course for you.



**HIGHER EDUCATION**



**A LEVELS**

**BTEC SUBSIDIARY & EXTENDED DIPLOMAS**

**ACCESS**

**ADVANCED APPRENTICESHIPS AND/OR NVQ 3**



**GCSEs**

**CERTIFICATES & DIPLOMAS**

On completion of the qualifications this level is equal to 5 or more GCSEs at grade C or above.

**FOUNDATION APPRENTICESHIPS AND/OR NVQ 2**



**DIPLOMA**

**FOUNDATION LEARNING TIER**

On completion of the qualifications this level is equal to 4 or more GCSEs at grade E or above.

**NATIONAL VOCATIONAL QUALIFICATIONS (NVQ 1)**

# YOUR QUALIFICATIONS & COURSES EXPLAINED

## LEVEL 4

### Higher Education

Petroc offers Higher Education opportunities in a range of subjects for students with Level 3 qualifications. A Bachelor Degree (BA/ BSc) is usually a three year course, while a Foundation Degree (FdA) normally takes two years and is a qualification in its own right.

Petroc's degree courses are run in partnership with Plymouth University. Foundation Degree graduates can top up their studies to Bachelor Degree level by spending a further year at Plymouth University or another partner college.

## LEVEL 3

### A Levels

These two year academic courses are split into AS (year one) and A2 (year two) units. AS Levels can be studied as the first half of an A Level or as a qualification in their own right. Most students choose four subjects to study in their first year (AS Level) and then drop one subject to concentrate on three subjects in their second year (A2 Level), achieving 3 A Levels and an AS Level. At Petroc, we recommend that you have achieved at least five GCSEs at grade C or above to embark on an A Level programme.

### BTEC Subsidiary and Extended Diplomas

These are new qualifications replacing the National Diplomas and Awards run in previous years.

They are two year vocational qualifications which blend practical, career focussed skills and academic study to prepare you for direct entry into employment or enable you to move on to Higher Education. They have been set up so that you can study for a Subsidiary Diploma in one year and then continue on to the Extended Diploma in the second year. It is possible to mix some of them alongside A Levels, depending on the amount of work you choose to take on.

- **Subsidiary Diploma** Equivalent to studying 1 A Level
- **Extended Diploma** Equivalent to studying 3 A Levels

### National Vocational Qualifications (NVQ 3)

Applicants must have a Level 2 NVQ or equivalent in order to gain entry on the Level 3 NVQ. NVQs are highly valued by employers because they demonstrate that you have the hands on practical skills and knowledge they want. Level 3 NVQs are designed to help you gain qualifications through training and assessment at work.

### Advanced Apprenticeships

These work based training programmes give you the skills, knowledge and competencies needed to progress in your chosen career or industry. Advanced Apprentices work for an employer and earn a salary, as well as taking an NVQ 3 through Petroc – attending college part time.

### Access

For adult learners (aged 19 and over) who wish to take a university level course, but lack the normal entrance requirements for Higher Education.

## LEVEL 2

### GCSEs

Petroc offers GCSE courses in a range of subjects as additional qualifications for students following academic and vocational programmes. Most employers and many of our programmes at Level 3 and above require a GCSE grade C or higher in both English and Maths, so re-takes or full courses are available if you need them.

### Certificates and Diplomas

These are new qualifications replacing the First Diploma. They are one year courses equivalent to four GCSEs at grade C or above. Students are introduced to a particular area of employment and complete projects and assignments that are based on realistic workplace situations.

### National Vocational Qualifications (NVQ 2)

The NVQ 2 is a competence based qualification to ensure you're clued up about a particular industry. NVQs are highly valued by employers because they demonstrate that you have the hands on practical skills and knowledge they want. They are designed to help you gain qualifications through training and assessment at work.

### Apprenticeships

Apprentices develop their prospects and career while they work. Level 2 apprentices take an NVQ 2 through Petroc.

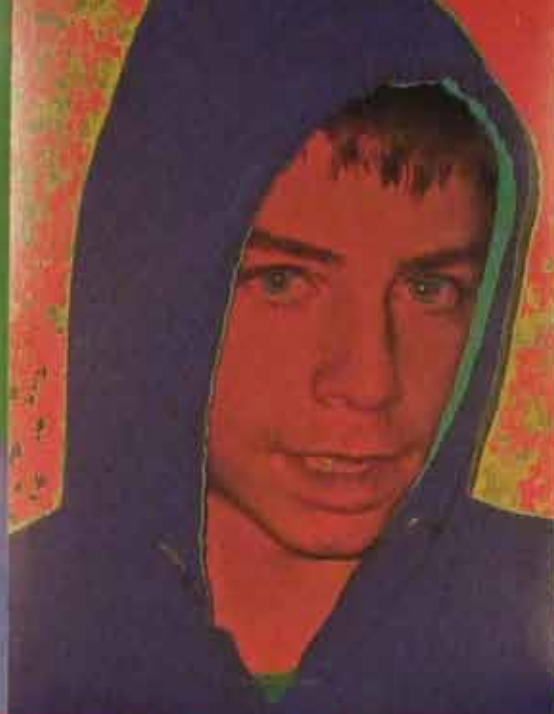
## LEVEL 1

### National Vocational Qualifications (NVQ 1) and Diplomas

These are foundation level hands on qualifications providing an introduction to an industry of interest. The Diploma is studied full time at Petroc and the NVQ 1 can be done whilst at work. It may also be possible to study the NVQ 1 full time, like the Diploma, at Petroc using the College's vocational facilities.

### Foundation Learning Tier

Petroc offers several entry level programmes designed for school leavers and adults who need basic key skills or individually designed programmes to aid progression onto a Level 1 course or into employment.



Artwork by Petroc Supported Learning students

# SUPPORTED LEARNING

Petroc provides a caring and supportive environment for Students with Learning Difficulties and Disabilities (SLDD).

The college has modern facilities and outstanding, experienced staff.

We know that your College experience will be really enjoyable and successful because of the different lessons and activities our students do. This part of the college has also been assessed by Ofsted as Grade 1 provision, with very high retention rates; 100% on many courses.

If you have any problems, such as needing more individual support or moving to a course where a higher level of help is given, your personal tutor and teachers are here for you.

Our aim is to enable you to go on to bigger and better things, whether it's further courses at Petroc, moving to a residential college or into other adult day provision.

A wide range of extra information for students, parents and carers is available from the The Guidance Centre. Alternatively, you can contact the Health, Fitness & Supported Learning Office direct on **01271 338123** and Sarah, Phil or Mandi will be able to help you. Their email address is **HealthandFitness-AdminOffice@petroc.ac.uk**.



# ENTRY/LEVEL 1

17	<b>Leap Learning Programme</b>
18	<b>Bricklaying</b> Diploma
18	<b>Carpentry &amp; Joinery</b> Diploma
18	<b>Community Link Tiverton</b> Foundation Learning
18	<b>Creative Hair &amp; Beauty</b> Certificate
19	<b>Health &amp; Social Care</b> BTEC Diploma
19	<b>Hospitality &amp; Catering</b> NVQ Certificate
19	<b>Information &amp; Communication Technology</b> Foundation in Learning
19	<b>Motorcycle Maintenance &amp; Repair</b> Award
19	<b>Plastering</b> Diploma
21	<b>Plumbing</b> Level 1
21	<b>Skills For Life &amp; Work</b> Foundation Learning
21	<b>Sport, Active Leisure &amp; Public Services</b> BTEC
21	<b>Vehicle Maintenance &amp; Repair</b> Award

## Entry Requirements

No specific entry requirements.



Our Leap Learning Programmes are for students (16-19) who need additional support to enable them to access their learning programmes at Petroc.

LEAP is Petroc's personalised foundation programme for young learners who are disaffected and who find it hard to motivate themselves. Sometimes in life, things don't quite work out the way we'd like them to; we need to stop, rethink and have another go.

## **PERSONALISED LEARNING PROGRAMME (PLP) LEAP 1**

This is a part time, flexible course offering learners the chance to study from pre-entry to Level 2 providing learners with:

- Tutorial and personal development sessions
- Individual mentoring
- Literacy and numeracy lesson
- National Open College Network (NOCN) qualifications
- Taster sessions throughout Petroc such as Key Skills/Functional Skills, Outdoor Pursuits, Vocational Tasters and Personal Development
- Work Placement
- Liaison and advocacy
- Residential

Each learner has an individual timetable according to their need, ability and previous commitment as well as a personal mentor to support them during their time on the programme.

Personalised Learning Programmes lay the foundation for progression to independent living, supported employment, employment, apprenticeships and further training.

## **FOUNDATION LEARNING LEAP 2**

This is a one year full time course for learners who:

- Are not yet vocationally focused and wish to explore various vocational or subject based areas
- Wish to gain confidence
- Would like to develop their independence skills
- Would like to further develop their personal and social skills
- Would like to improve their functional skills
- Need help in deciding their future
- Wish to undertake pre-apprenticeship or pre-employment training
- Wish to undertake work experience in their chosen area

Each student will be allocated a personal tutor and together they will agree a progression pathway depending on individual needs. Close links will be maintained with parents/carers, other external agencies and employers if appropriate.

## **FOUNDATION LEARNING LEAP 3**

This is a full time programme lasting for one year, offering students a range of other qualifications to aid in their work experience and skills training to help them decide on the right job or career path.

This course will boost confidence through team building and community work and give you the necessary qualification to progress to further training, apprenticeships or employment.

## **BRICKLAYING**

### **DIPLOMA FTT001**

This course has been designed to provide basic bricklaying skills and is ideal for those seeking employment in the construction industry. The qualification is aimed at providing an introduction to bricklaying crafts and specifically provides an understanding of the craft tasks.

Seven units including Health and Safety. All units to be assessed for knowledge by Q&A on our Virtual Learning Environment system. Synoptic practical assessments will take place to check that you have acquired the strict criteria in practical activities.

Functional skills in English, Maths and ICT are included in the programme content.

The course can lead into employment in the construction industry or possible progression to a full time Level 2 Diploma or NVQ Diploma Level 2. You must be employed to enrol on the NVQ Diploma Level 2.

## **CARPENTRY & JOINERY**

### **DIPLOMA FTT002**

If you enjoy working with your hands and would prefer a workshop environment then this is the course for you.

The course may cover the following subjects; Health and Safety, Information, Quantities and Communicating, Building Methods and Construction Technology. You may also have the opportunity to obtain further qualifications including a Health and Safety Test, CSCS card or a Technical Drawing Certificate.

This course covers six units including Health and Safety. All units to be assessed for knowledge by Q&A on our Virtual Learning Environment system. Synoptic practical assessments will take place to check that you have acquired the strict criteria in practical activities.

Functional skills in English, Maths and ICT are included in the programme content.

The course can lead into employment in the construction industry or possible progression to a full time Level 2 Diploma or NVQ Diploma Level 2. You must be employed to enrol on the NVQ Diploma Level 2.

## **COMMUNITY LINK TIVERTON**

### **FOUNDATION LEARNING FTT003**

This course is designed for students who have learning disabilities and leads to a nationally recognised entry level qualification. There are various vocational opportunities available for learners depending on their own personal progress pathway.

This course runs for three days per week, with the possibility of students doing one, two or three days. The students have individual programmes designed to meet their needs. The course offers catering and other practical/vocational qualifications.

Students can progress to a higher level course or gain supported employment.

## **CREATIVE HAIR & BEAUTY**

### **CERTIFICATE FTT004**

This programme has been designed to provide an introduction to the hair and beauty industry and will help students to decide which subject to specialise in at Level 2. They will also study functional skills in literacy, numeracy and IT and complete a qualification in personal and social development. This will help to prepare them for a career in the hair or beauty industry.

The programme content includes styling womens hair, plaiting and twisting, basic make-up application, themed face painting, nail art application and colouring hair using temporary colour. Progression to Level 2 hairdressing or Level 2 beauty therapy. Alternatively you could do an Apprenticeship in hairdressing or beauty therapy.

#### **LENGTH**

One year.

#### **ENTRY REQUIREMENTS**

The programme is suitable for learners who have no previous experience or knowledge of bricklaying. Candidates will be selected by interview. There is a six week probation period starting in September.

#### **COSTS**

There will be costs of approximately £30 for materials and course book.\*

#### **LENGTH**

One year.

#### **ENTRY REQUIREMENTS**

There are no formal entry requirements but a good understanding of Maths and English will be of benefit. Demonstration of reliability, motivation and a keen interest will all be considered.

#### **COSTS**

There will be costs of approximately £30 for materials and course book.\*

#### **LENGTH**

Two years.

#### **ENTRY REQUIREMENTS**

No specific entry requirements.

#### **COSTS**

The students will have to pay an exam fee at the start of term. No other costs are involved on this course.\*

#### **LENGTH**

One year full time.

#### **ENTRY REQUIREMENTS**

Four GCSEs at grade E or above including English and Science.

#### **COSTS**

£50 salon fee, £250 for the salon uniform and kit, £50 for books. Additional trips and qualifications are optional and are usually about £30 to £50 each.\*

## HEALTH & SOCIAL CARE

### BTEC DIPLOMA FTT005

You will cover work on units from a range of social care topics. Personal skill units include; Personal Effectiveness, Social Responsibility at Work and Financial Management. Optional units will cover looking after children. You will have opportunities to do work placements in a variety of settings, to provide practical and professional experience.

This course normally leads to a Level 2 First Diploma in Health and Social Care or Childcare and Education. It can also enable you to gain employment as an assistant in a care or childcare setting and can give you the opportunity to do an apprenticeship. The work experience element of the course will help you decide if this is the career path for you.

## HOSPITALITY & CATERING

### NVQ CERTIFICATE FTT006

This course is for learners who aspire to gain practical skills in a professional kitchen and restaurant environment. This course will cover a range of topics from basic meat and vegetable preparation, cake and dough products through to team and customer service skills. Work experience to enhance employability maybe part of the programme.

This course is a pathway to progression to Level 1 and 2 Hospitality and Catering programmes, or for anyone seeking a trainee position in the hospitality and catering industry.

## INFORMATION & COMMUNICATION TECHNOLOGY

### FOUNDATION LEARNING FTT007

This is an introductory programme in IT. The aim is to give you a broad knowledge of IT systems and also to develop the personal qualities you will need to be a successful IT professional. The course has eight units which cover a range of IT subjects and will also improve your skills at finding employment. All units must be achieved to gain a pass. Higher grades can also be achieved (Merit or Distinction).

You may progress to a Level 2 course such as the BTEC First Diploma for ICT Practitioners, and then on to a Level 3 course, such as the BTEC National Diploma.

With further training or study, students go into careers such as; Trainee Web Designer, Trainee Programmer, Trainee IT Technician (Working in Networks), End User Support (Working on a Help Desk), Technical Manual Writer or IT Trainer.

## MOTORCYCLE MAINTENANCE & REPAIR

### AWARD FTT008

The course is a combination of practical lessons in our fully equipped workshops and theory relating to the maintenance and repair of motor cycles. To supplement the programme students will be encouraged to find work placements.

This course introduces the fundamentals of the motorcycles main systems covering engines, transmission, electrical and chassis. It encourages the student to develop skills that are required when working on a modern bike and assists them in starting a career.

Functional Skills (Literacy, Numeracy and ICT) are also included in the programme.

On successful completion of the Vehicle Maintenance (Motorcycle) Diploma at Level 1 students, can progress to an apprenticeship in a garage, working towards their National Vocational Qualification (NVQ) Level 2.

## PLASTERING

### DIPLOMA FTT009

This course has been designed to provide basic plastering skills and is ideal for those seeking employment in the construction industry. The qualification is aimed at providing an introduction to plastering crafts and specifically provides an understanding of the craft tasks.

There are six units including Health and Safety. All units to be assessed for knowledge by Q&A on our Virtual Learning Environment system. Synoptic practical assessments will take place to check that you have acquired the strict criteria in practical activities .

Functional skills in English, Maths and ICT are included in the programme content.

The course can lead into employment in the construction industry or possible progression to a full time Level 2 Diploma in Plastering or a NVQ Diploma Level 2 in Plastering. You must be employed to enrol on the NVQ Diploma Level 2.

#### LENGTH

One year.

#### ENTRY REQUIREMENTS

There are no specific entry requirements.

#### COSTS

You will be expected to pay for a current Criminal Records Bureau (CRB) check costing £44 and buy relevant books and stationery.\*

#### LENGTH

One year.

#### ENTRY REQUIREMENTS

There are no specific entry requirements, but a love of cooking food will be an advantage.

#### COSTS

Protective clothing and equipment will cost about £250. There may be some costs involved with work experience and educational visits.\*

#### LENGTH

One year.

#### ENTRY REQUIREMENTS

There are no formal entry requirements, but you must be enthusiastic in the use of IT and you must be willing to develop the written and verbal skills to communicate your understanding of IT.

#### COSTS

Access to a home computer will be very useful. A memory stick will allow you to transport your work to and from home.

#### LENGTH

One year.

#### ENTRY REQUIREMENTS

Although there are no minimum grades for entry, students must demonstrate a desire to work in the motorcycle repair industry and wish to progress to an apprenticeship. However it would be an advantage if learners have a good understanding of Maths, Literacy and ICT.

#### COSTS

You will need to supply overalls and suitable safety footwear.\*

#### LENGTH

One year.

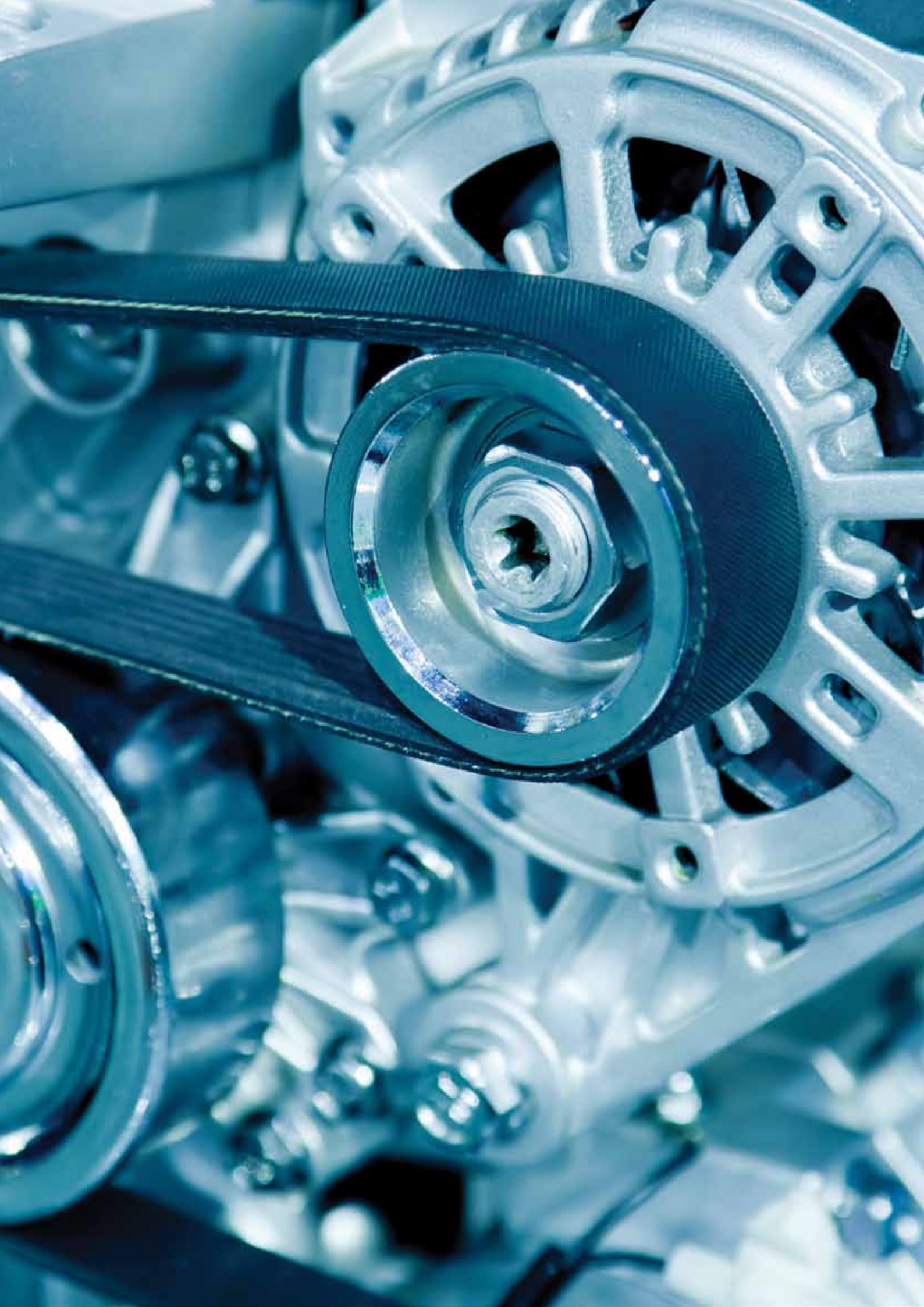
#### ENTRY REQUIREMENTS

The programme is suitable for learners who have no previous experience or knowledge of bricklaying. Candidates will be selected by interview. There is a six weeks probation period starting in September.

#### COSTS

There will be costs of approximately £30 for materials and course book.\*

\*Financial support may be available for any additional costs. Please enquire.



## PLUMBING

### LEVEL 1 FTT010

This plumbing course is for individuals who would like to work within the plumbing and heating industry. Plumbing techniques and practical applications will be studied along with the design and application methods to industrial standards.

The course will cover: general health and safety, key plumbing principles (plumbing science - properties of water, force, pressure, heat transfer and corrosion), common plumbing processes (setting out, pipe fixing, pipe bending, jointing, materials and fittings), basic principles of cold and hot water systems, construction drawing, practical assessment portfolio and employability skills.

This course can lead to the Plumbing and Mechanical Engineering Services (MES) Technical Certificate and work with training.

## SKILLS FOR LIFE & WORK

### FOUNDATION LEARNING FTT011

This course offers learners personalised programmes of learning within Foundation Learning ie, Entry Level and Level 1. Programmes are matched to the individual needs.

This course offers learners personalised programmes of learning within Foundation Learning ie, Entry Level and Level 1. Programmes are matched to the individual needs. Work skills training through taking part in the enterprise programme where students gain experience in setting up and managing a business running the College shop. Students will also have the opportunity to take part in a work experience placement.

Progression to other supported learning courses: LEAP Level 1 or vocational areas.

## SPORT, ACTIVE LEISURE & PUBLIC SERVICES

### BTEC FTT012

This course will introduce you to various aspects of sport and the public services including fitness, planning and leading a variety of sports activities and events. Some of your time will be spent planning and running a variety of sessions. You will also find that there is a requirement to take part in practical sports and fitness training on a daily basis.

You don't need to be fit or good at any particular sports but you have to be willing to take part and improve your fitness, communication and leadership skills.

You will also complete two additional qualifications to enhance your experience: The Sports Leader Award and Emergency First Aid in the Workplace.

You will have the opportunity to progress to the Level 2 Diploma in Sport or Level 2 Diploma in Uniformed Public Services and then to a range of employment opportunities in the sports industry.

## VEHICLE MAINTENANCE & REPAIR

### AWARD FTT013

The course is a combination of practical lessons in our fully equipped workshops and theory relating to the maintenance and repair of motor vehicles. To supplement the programme students will be encouraged to find work placements.

This course introduces the fundamentals of the vehicle's main systems covering engines, transmission, electrical and chassis. It encourages the student to develop skills that are required when working on a modern vehicle and assists them in starting a career.

Functional Skills (Literacy, Numeracy and ICT) are also included in the programme.

Students who complete the course can enter the industry as a semi skilled technician as an apprentice, depending on work placements, or progress to the full time Level 2 Diploma in Light Vehicle Maintenance and Repair Principles, subject to interview.

#### LENGTH

One year.

#### ENTRY REQUIREMENTS

There are no formal entry requirements but a good understanding of Maths and English will be of benefit.

#### COSTS

You may be required to purchase safety clothing.\*

#### LENGTH

A full time course for a minimum of one year.

#### ENTRY REQUIREMENTS

No formal qualifications. Interview essential.

#### COSTS

Small contribution towards cost of materials.\*

#### LENGTH

One year.

#### ENTRY REQUIREMENTS

Entry depends on your interview and you will need to show a real interest in working in sport or the uniformed public services.

#### COSTS

There will be costs of approximately £200 for course admin and trips/visits.\*

#### LENGTH

One year.

#### ENTRY REQUIREMENTS

Although there are no minimum grades for entry, students must demonstrate a desire to work in the vehicle maintenance and repair industry, ideally wanting to progress to an apprenticeship.

#### COSTS

Students will need to purchase safety shoes and a pair of overalls. There will be a number of trips during the year that may incur a cost.\*

\*Financial support may be available for any additional costs. Please enquire.



24	<b>Apprenticeships</b>
27	<b>Art &amp; Design</b> BTEC Diploma
27	<b>Beauty Therapy</b> Diploma
27	<b>Bricklaying</b> Diploma
27	<b>Business With Retail &amp; Admin</b> BTEC Diploma
28	<b>Children's Care, Learning &amp; Development</b> BTEC Diploma
28	<b>Electrical Installation Performing Engineering Operations</b> NVQ Diploma
28	<b>Exercise &amp; Fitness</b> CYQ Diploma
29	<b>Health &amp; Social Care</b> BTEC Extended Certificate/Diploma
29	<b>Hospitality &amp; Catering</b> VRQ Professional Diploma
29	<b>Information Technology</b> BTEC Diploma
31	<b>Ladies Hairdressing</b> Diploma
31	<b>Light Vehicle Maintenance and Repair Principles</b> Diploma
31	<b>Maintenance Operations (Construction)</b> Diploma
33	<b>Motorcycle Maintenance &amp; Repair Principles</b> Certificate
33	<b>Music</b> BTEC Diploma
33	<b>Performing Arts</b> BTEC Diploma
33	<b>Plastering</b> Diploma
34	<b>Public Services</b> BTEC Extended Certificate/Diploma
34	<b>Sport - Outdoor Adventure</b> BTEC Extended Certificate/Diploma
34	<b>Supporting Teaching &amp; Learning in Schools (Teaching Assistant)</b> BTEC Extended Certificate/Diploma
35	<b>Wood Occupations - Bench Joinery</b> Diploma
35	<b>Wood Occupations - Site Carpentry</b> Diploma

## Entry Requirements

Four GCSEs at grade E or above, or an appropriate vocational qualification at Level 1, unless otherwise stated.

# WORK LEARN EARN

Would you prefer to be working and earning money whilst training towards a skilled career?

This could be your chance to train for a skilled job and earn a wage. Employers provide on the job training throughout your learning programme and look to their employees to be motivated and disciplined. The Apprentice attends college on a day release/block release basis, depending on the occupational area.

Apprenticeships are designed to enable you to get a qualification and reach your full potential, but to ensure success you will need to be committed to your chosen career and employed in your chosen industry.

All Apprenticeships at Petroc can progress to a Level 3 Advanced Apprenticeship. They can also lead to higher achievement and further studies, giving you more career opportunities.

## ACCOUNTING

Running a business involves a lot of financial activities, from expenses and bills to taxes and payroll - accountants keep track of all these and more. This Apprenticeship could find the Apprentice working in an accounts department, helping a business or organisation manage their money properly. It takes a business brain, as well as a way with numbers, to get ahead in this competitive industry.

## BEAUTY \*NEW\*

This Apprenticeship is about improving people's wellbeing by making them look and feel better. As a beauty therapy Apprentice, you'll assist senior therapists and learn a range of skills and techniques, such as how to improve facial skin conditions, wax body hair, spray tan, shape and colour brows, perform hand and foot treatments, and apply make up. To succeed, you need to work hard at practical and theory work, have a mature, caring personality and be very well presented.

You will need a business brain and a way with numbers to get ahead in this competitive industry.

## BUSINESS AND ADMINISTRATION

Without administrators, information would be hard to find, meetings would be missed and businesses would be less productive. This sort of work requires a strong sense of responsibility, accuracy and attention to detail. One of the great things about the Business and Administration Apprenticeship is that almost all businesses require these skills and processes.

Administration roles are also an excellent starting point to move into management once more experience has been gained. Please note: The Foundation Apprenticeship (Level 2) is delivered at our Tiverton Campus only.

## CREATIVE INDUSTRIES \*NEW\*

Before setting up his own studio, Leonardo da Vinci spent six years learning his craft as an Apprentice. More than 500 years later, Apprenticeships are still a great way to get your break in Arts, Media and Publishing. The arts world covers everything from film to fashion, music to computer gaming. While it's the artists and actors, musicians and models who take centre stage, they wouldn't be there without armies of assistants and teams of technicians - just take a look at the number of crew members listed in the credits next time you watch a film. Media and publishing is even bigger business. Imagination and a flair for English, art, music, fashion or a similar creative subject can help you succeed in the creative industries.

## CUSTOMER SERVICE

This Apprenticeship can be applied to hundreds of job roles across many different sectors. As a customer service Apprentice, they'll be making sure that customers are dealt with in a positive, reliable and pleasant way, offering advice, answering questions or handling complaints. These are skills that will serve well in virtually any industry - so it's a very good way to move forward and prepare for a future career.

## EARLY YEARS \*NEW\*

This Apprenticeship covers a range of job roles in the early years field including working in nurseries and playgroups. As an Apprentice in this field you will have an opportunity to train in all age ranges - up to the age of eight, and be professionally competent to deal with all aspects of childcare. It will enable the Apprentice to go onto other childcare related courses and possibly progress into a management role or onto higher education study.

## ELECTRICAL INSTALLATION (LEVEL 3)

Bright sparks should consider this Apprenticeship, which gives a complete grounding in the scientific and practical aspects of electrical installation. Apprentices learn how to install and commission electrical systems - test them, inspect them, find and diagnose faults. Attendance at college includes studying science based subjects to an advanced level and practical workshop based activities. They will also need to undertake a practical competency assessment in the latter end of the Apprenticeship.

## HAIRDRESSING

A hairdressing Apprentice will work as a salon junior, assisting senior staff while training as a junior stylist. Advanced Apprentices (Level 3) develop their cutting and colouring skills so they can carry out all the latest fashion techniques - and determine the looks of the future. The Apprentice will need to look smart and have good communication skills to understand exactly what the customer wants in order to make them happy.

## HEALTH & SOCIAL CARE

The Apprenticeship covers a wide range of job roles in the health and social care fields. As an Apprentice you will work in a variety of fields including those who are elderly, have a learning disability or those with mental health issues. It will enable the Apprentice to progress to other health and social care related courses and eventually they could choose a profession in nursing or midwifery or management roles in the care sector.

## HOSPITALITY & CATERING

Hospitality and catering covers work in restaurants, hotels, cafés, pubs and with contract caterers - it also supplies other industries with food and drink. There are dozens of possible career options. An Apprentice in this field will need to have an outgoing personality and be prepared to work in an environment which is largely shift based. Successful completion of the Advanced Apprenticeship (Level 3) could lead to management or supervisory roles.

## MARINE ENGINEERING FABRICATION & WELDING \*NEW\*

This Apprenticeship can be completed at Levels 2 and 3, and covers both fabrication and welding related to marine applications. The framework will consist of both "on" the job and "off" the job training. The first part of the programme will require you to attend college and complete the basic training in welding and fabrication. The remaining part of the programme will be completed in the work place. A portfolio of evidence will be completed in a range of disciplines relevant to your work area, such as welding, fitting and cutting of materials.

# APPRENTICESHIPS

## **MOTOR CYCLE \*NEW\***

The motor cycle Apprenticeship can be completed at two different levels and covers the service and repair of motor cycles, ranging from scooters through to high performance equipment. The Level 2 will require you to remove and replace a range of components in the areas of suspension, transmission, engines, electrical, braking and steering systems. Evidence from the workplace will go towards a portfolio. At Level 3 you will be required to diagnose and rectify a range of faults related to light vehicles. Knowledge will be assessed by a technical diploma in both theory and practical subjects and be completed at college.

## **MOTOR VEHICLE**

The motor vehicle apprenticeship can be completed at two different levels and covers the service and repair of modern vehicles. The Level 2 will require you to remove and replace a range of components in the areas of suspension, transmission, engines, electrical, brakes and steering. Evidence from the workplace will go towards a portfolio of evidence. At Level 3 you will be required to diagnose and rectify a range of faults related to light vehicles. This will involve the use of sophisticated diagnostic equipment and repair procedures.

Knowledge will be assessed by a technical diploma in both theory and practical subjects and be completed at college.

## **PLASTERING**

To qualify as a plasterer the Apprentice will need to show aptitude and flair for producing high quality finishes. An Apprenticeship in plastering will allow the student to work towards the Construction Diploma Level 2, the CSCS Health and Safety card and NVQ Level 2 in Plastering. There are college and workbased practical assessments. Study mode is either day or block release, dependant on any prior experience in the field.

## **PLUMBING & MECHANICAL ENGINEERING SERVICES**

A plumbing Apprentice will learn about the installation and maintenance of plumbing systems and components. The plumbing industry is a highly competitive field and plumbers must be familiar with everything from domestic heating and plumbing systems, to lead sheet weathering. In recent years, the industry has also been involved with developing environmental technologies such as solar water heating and rain water harvesting. These are areas that the Apprentice will develop, broadening the knowledge base to encompass current technology.

## **RETAIL**

Retail covers a host of businesses from market stalls and independent shops to national chains and large superstores. An Apprentice could be assisting customers on the sales floor of a high street store or working behind the scenes in stock handling; ensuring products are received in the correct quantities and appropriately stored. From organising displays to learning the crucial aspects of management, the skills gained from this Apprenticeship are transferable to all retail companies.

## **SPORT & FITNESS \*NEW\***

The Apprenticeship in sport and fitness is aimed at those individuals who wish to pursue a career within the teaching, coaching and leadership industry or the health and fitness industry. An Apprentice in this field could be engaged in wide variety of activities and career options, some of which may include leading young people, assisting teachers and coaches, working directly with members of the public and carrying out general duties within a school or health club setting. Individuals interested should possess excellent interpersonal skills and demonstrate an ability to work well within a team environment.

## **TROWEL OCCUPATIONS**

To qualify as a craft mason the Apprentice will need to show an aptitude in craft masonry and the construction industry. An Apprenticeship in Trowel Occupations will allow the student to work towards the Construction Diploma Level 2, the CSCS Health and Safety card and Level 2 in Trowel Occupations. There are college and work based practical assessments. Study mode is either day or block release - dependant on any prior experience in the field.

## **USING INFORMATION TECHNOLOGY**

IT makes the modern world go round. The technical expertise and knowledge gained during this Apprenticeship will make the Apprentice a valuable asset to any organisation that relies on computers - which is pretty much everyone. There is also a chance to gain other qualifications during this Apprenticeship or progress on to Petroc's Foundation Degree in Computing.

## **WOOD OCCUPATIONS**

Wood occupations include site joinery, bench joinery or wood machining. An Apprentice will also study for the Construction Diploma Level 2, the CSCS Health and Safety card and Level 2 in Wood Occupations. They may then progress to an Advanced Apprenticeship (Level 3) which will include the Construction Diploma Level 3. The Apprenticeship can be studied through either day or block release - day release is for those who have already been working on site for at least two years or are aged 19 or above.

## ART & DESIGN

### BTEC DIPLOMA FTT014

A practical course exploring and developing skills in a range of art and design activities. You will also develop specialist work and prepare a portfolio of work for progression.

The programme consists of six units and is equivalent to four GCSEs at grade C and above. All students will do four core units that explore drawing, 2D and 3D materials and techniques, developing ideas and producing finished outcomes. You will also complete two more units selected from a range of specialist art and design units.

Most students will choose to progress to the National Diploma in Art and Design at Petroc.

## BEAUTY THERAPY

### DIPLOMA FTT015

A high percentage of this course is dedicated towards development of practical skills, which take place in the College's well equipped salon. The College welcomes the public as paying clients to allow students to carry out formalised assessments to meet required standards. A strong emphasis is placed on theoretical knowledge to support practical application, with coursework also forming a major part of the assessment.

You will train using Professional Skin Care Products and undertake a programme of study that includes both practical and theory elements. There is an expectation of 12-15 hours per week self directed study outside of class time to enable students to complete their theory assignments.

Students can progress onto the Level 3 VRQ in Beauty Therapy Techniques if they have achieved all units at either merit or distinction grade and have achieved a minimum of 85% attendance by the end of the Level 2 course. Achievement of Level 2 is essential before progressing to Level 3 to meet commercial standards.

## BRICKLAYING

### DIPLOMA FTT016

This programme seeks to develop the skills already gained at Level 1. It provides the practical skills and knowledge required to successfully embark upon a progression route in college or a career in the construction industry as a bricklayer. The focus is based on the practical skills and underpinning knowledge required in the construction industry.

Seven units including Health and Safety, building methods and construction technology; working drawings and setting out basic masonry structures; thin joint masonry and timber frame construction; solid walling and isolated and attached piers; cavity walling foundations vernacular cavity walling. All units to be assessed for knowledge by question and answer on our Virtual Learning Environment system. Synoptic practical assessments will take place to check that you have acquired the strict criteria in practical activities. Functional Skills in English, Maths and ICT may be included in the programme content.

The course can lead into employment in the construction industry or possible progression to a full time Level 3 Diploma or NVQ Diploma Level 2. You must be employed to enrol on the NVQ Diploma Level 2.

## BUSINESS WITH RETAIL & ADMIN

### BTEC DIPLOMA FTT017

This one year programme (formerly first diploma in business, retail and administration), will offer you the opportunity to develop a broad range of knowledge in topics ranging from business organisations, human resources, finance and business communications. Additionally, you will develop practical skills in personal selling and customer relations, which will be assessed in a vocationally relevant context.

The BTEC Diploma in Business is assessed through 100% coursework, with one to one guidance and advice throughout.

Learners have the choice of progressing to the Level 3 Extended Diploma in Business, A Levels or employment in areas such as administration, retail, marketing or finance.

#### LENGTH

One year.

#### ENTRY REQUIREMENTS

Four GCSEs at grade E or above including an Art and Design related GCSE. You will be required to bring a portfolio of work to your interview.

#### COSTS

There will be a studio fee of £90 for the year. In addition you will need to buy some basic equipment at the beginning of the course.\*

#### LENGTH

One year.

#### ENTRY REQUIREMENTS

Four GCSEs at grade D or above (including science and English), English at grade C (recommended), or successful completion of Beauty Therapy Level 1 (at Merit and distinction level) with an average of above 85% attendance and passes in all relevant functional skills.

#### COSTS

There will be approximate costs of £300 for uniform, books and kits. £50.00 salon fee. Additional courses and trips offered by the College will be payable by each student.\*

#### LENGTH

One year.

#### ENTRY REQUIREMENTS

The full completion of a Level 1 is compulsory. There are no other formal entry requirements but a good understanding of Maths and English will be of benefit. Demonstration of reliability, motivation and a keen interest will all be considered.

#### COSTS

There will be costs of approximately £30 for materials and course book.\*

#### LENGTH

One year.

#### ENTRY REQUIREMENTS

Four GCSEs at grade E or above.

## **CHILDREN'S CARE, LEARNING & DEVELOPMENT**

### **BTEC DIPLOMA FTT018**

This course provides the underpinning knowledge and practical training for childcare and education practitioners who work with children in a wide variety of settings. Each unit in the course includes a balance of theory and practice and is further supported by placements in pre-schools, day nurseries, primary schools, childminders and families.

The core units are; Understanding children's development, Keeping children safe, Communication with children and adults, Preparing and Maintaining Environments for Childcare and Professional Development.

Many students go on to study Level 3 Childcare or go into employment and continue studying through the apprenticeship route, gaining work based qualifications to enhance their careers.

## **ELECTRICAL INSTALLATION PERFORMING ENGINEERING OPERATIONS**

### **NVQ DIPLOMA FTT019**

The course content is electrical engineering biased for those who would like to work in the electrical industry but do not have an Apprenticeship. The qualification is gained through the production of an NVQ portfolio which is workshop based.

Included in the programme will be a technical drawing module and three Functional Skills in Mathematics, English and IT. This course of study is not an Electrical Apprenticeship.

Successful learners will be able to progress onto the EAL Technical Certificate or progress into the workplace with further training.

## **EXERCISE & FITNESS**

### **CYQ DIPLOMA FTT020**

This comprehensive and flexible qualification is designed to thoroughly prepare candidates for employment in the health and fitness industry. The course will be taught by practising professionals, using a variety of practical and theory based sessions. The delivery of the course will be realistic to the fitness industry that you will be aspiring to work in and may include some work outside of normal college hours.

The mandatory units followed are; Certificate in Fitness Instructing Gym or Exercise to Music, Understanding the Fitness, Leisure and Recreation Industry, Award in Circuit Training. There are also a number of optional units, which allow you to broaden your expertise of various aspects of exercise and fitness.

You could move on to the Level 3 Certificate in Personal Training. Alternatively, this course gives you all the qualifications you need to work in different parts of the fitness industry, in gyms, leisure centres or as a freelance instructor or trainer.

#### **LENGTH**

One year.

#### **ENTRY REQUIREMENTS**

Four GCSEs at grade E or above. Two personal references and a successful interview are also required.

#### **COSTS**

There will also be a cost of £44 for a Criminal Records Bureau (CRB) check.\*

#### **LENGTH**

One year.

#### **ENTRY REQUIREMENTS**

Four GCSEs at grade E or above, including Maths, English and a science or a technology subject.

#### **COSTS**

There is a student contribution of £30 towards materials which is payable at the start of the course. Students are also required to purchase safety boots.\*

#### **LENGTH**

One year.

#### **ENTRY REQUIREMENTS**

There are no formal pre-requisites for this qualification. Selection will be by interview, where candidates will need to prove an interest in the fitness industry and a commitment to fitness.\*

#### **COSTS**

Related additional costs may include materials, equipment and visits which are payable by all students. If you are 19 years old or over tuition fees will apply, please enquire.\*

## HEALTH & SOCIAL CARE

### BTEC EXTENDED CERTIFICATE/DIPLOMA FTT021

This is a programme which is designed to give young people an introduction to working in the different health and social care settings. It covers the theory which is needed to understand how to meet the needs of various different service users. It is divided into two parts, the first part is the extended certificate and the second part leads to the diploma. You have to successfully complete the extended certificate to move on to the diploma.

The topics that are covered in this course include communication, individual rights, individual needs, safe working environments, anatomy and physiology and nutrition. During the year, 60 hours of work experience must be completed.

On successful completion of this course you have several options open to you including the following:

- Apply for a Level 2 Health and Social Care Apprenticeship
- Apply for another Level 2 course within the College
- Apply for Level 3 Health and Social Care
- Apply for another Level 3 vocational course within the College

## HOSPITALITY & CATERING

### VRQ PROFESSIONAL DIPLOMA FTT022

So you want to be a professional chef? Inspired by Gordon, Heston or Jamie? Love food and have a passion for customer service? Then this is the course for you - especially developed for students who aspire to be a professional within the catering industry.

This practical programme consists of Level 1 and 2 VRQ qualifications, equipping students with culinary skills and food service techniques. Delicious subjects include pastry and dough, meat, fish and vegetable cookery, team skills, wine appreciation and table theatre techniques. Work experience is part of the programme and there will be opportunities to experience food and service in a fine dining restaurant.

Students can progress to a Level 3 Diploma in Professional Cookery at Petroc or gain employment as a professional trainee chef or waiter.

## INFORMATION TECHNOLOGY

### BTEC DIPLOMA FTT023

This is a practical, work related course made up of seven units, all assessed through coursework assignments. The units may include communicating in the IT industry, working in the IT industry, computer systems, setting up an IT network, website development, spreadsheet modelling and installing hardware components.

The qualification provides a good grounding to go on to a more advanced vocational course in ICT or as an all round ICT foundation that can be applied in other disciplines. It also prepares students for employment in junior or trainee roles using ICT in office environments.

#### LENGTH

One year.

#### ENTRY REQUIREMENTS

You will need a minimum of four GCSEs (or equivalent) at grade E or above, including English Language. Alternatively a successfully completed Foundation Learning Diploma and a pass in Functional Skills Maths and English at Entry Level 3 or higher. You will need to have a satisfactory result from your Criminal Records Bureau (CRB) check and Fitness to Train assessment.

#### COSTS

You will need a memory stick and suitable clothes for your volunteer placement. Costs of trips and visits will be kept to a minimum but a contribution may be required. You will have to pay for your CRB check with is approximately £55 but subject to change. You will also need a folder, poly pockets, pens and money for printing in college.\*

#### LENGTH

Two years.

#### ENTRY REQUIREMENTS

Four GCSEs at grade E or above, preferably with a grade D in Maths and English.

#### COSTS

Uniform, equipment and course material costs will be incurred, as will trips and visits. These costs will be identified at interview as they can vary.\*

#### LENGTH

One year.

#### ENTRY REQUIREMENTS

Five GCSEs at grade E or above preferably including Maths and English. This requirement can be relaxed in certain circumstances, which will be discussed with you at interview.

#### COSTS

This course can be completed without a home computer, but having one would be very useful. A memory stick will allow you to transport your work to and from home. You will not be expected to buy any text books.\*

\*Financial support may be available for any additional costs. Please enquire.



## **Louise Wright**

**COURSE:** NVQ 2 Hairdressing

**FORMER SCHOOL:** Tiverton High School

I studied NVQ 2 Hairdressing at Petroc. I also came to Petroc whilst I was at school for one day a week on the links course.

Petroc really helped me develop and achieve the confidence I needed to enter into industry. The layout of the salons are very professional and because we had the opportunity to work with real clients it made the progression from college to work less daunting. We received a lot of support from our lecturers and I found making new friends and meeting new people very easy.

I attended the Dance class every Wednesday afternoon which was part of the Enrichment programme. This was so much fun and I met a lot of people from different courses.

We attended Beauty UK in Birmingham which was a really big exhibition for trade only and final year students to gain insight into the industry and latest products. I learnt a lot and also it was a great day out.

Towards the beginning of my course I did five weeks work experience at a salon called Attention in Tiverton.

I am working in the Barbers in Tiverton and have been there since completing my course. I love working here and Petroc gave me the foundation I needed to enter into the world of work.

One day it is my ambition to own my own hairdressing salon.

## LADIES HAIRDRESSING

### DIPLOMA FTT024

This course will teach you the basic skills of hairdressing enabling you to work as a junior stylist styling, cutting, colouring and perming hair. You will study a minimum of nine units leading to the VRQ Level 2 in Hairdressing. Additionally you will study basic salon skills during induction period to ensure this is the industry for you.

Functional Skills will also be studied alongside hairdressing, strengthening your employability. Assessment is by commercially competent practise on a range of clients with written and oral tests and assignments.

On completion of the qualification, you may choose to continue your studies towards achieving the Level 2 Diploma in Hairdressing qualification and employment, subject to satisfactory interview. You should make every effort during your first year of the course to find out all you can about the hairdressing profession by asking questions, attending open days and seminars and researching possible career routes to help you make the right career choices.

## LIGHT VEHICLE MAINTENANCE AND REPAIR PRINCIPLES

### DIPLOMA FTT025

This qualification is designed to increase opportunities for individuals who would like to enter the industry. The course develops manual skills and the student's knowledge of vehicles. Students are introduced to diagnostics skills associated with vehicle maintenance and repair, covering both practical and theory.

The course is split up into units and is assessed by a practical assessment and theory related question paper. The qualification is made up from seven units covering the four main systems on a vehicle; engines, transmission, electrical/electronic and chassis.

Students who complete this programme can progress to an Apprenticeship programme at a garage. Once employed they will be encouraged to complete further qualifications as required.

## MAINTENANCE OPERATIONS (CONSTRUCTION)

### DIPLOMA FTT026

This course is designed to develop skills and knowledge, enabling students to work in the industry in their chosen craft. This course covers the following practical areas; Plastering, Bricklaying, Tiling, Plumbing, Carpentry, Storm Water Systems, Roofing, Lead Flashing, Drainage and Basic Electrics.

Eight units including Health and Safety. All units to be assessed for knowledge by Q&A on our Virtual Learning Environment system. Synoptic practical assessments will take place to check that you have acquired the strict criteria in practical activities .

Functional skills in English, Maths and ICT are included in the programme content.

On completion of this Diploma, learners may progress to employment (NVQ Diploma Level 2 in maintenance operations) or a course at Petroc in one of the specialist areas.

#### LENGTH

One year.

#### ENTRY REQUIREMENTS

Four GCSEs at grade D or above including Maths, English and preferably Science. Good personal presentation skills and commitment to learning. At interview you will also be expected to complete a practical test and pre-entry test to determine your literacy and numeracy levels.

#### COSTS

You will need to purchase the salon uniform and your personal equipment which will cost approximately £300. Any educational visits, manufacturer diploma courses or similar activities will also be paid for by you.\*

#### LENGTH

One year.

#### ENTRY REQUIREMENTS

There are no minimum grades for entry, however there is an expectation that students will have completed the Level 1 Diploma in Vehicle Maintenance. GCSE grade E or above in Mathematics, English or ICT would be an advantage. Assessment of the students prior knowledge and experience at interview will determine entry onto the course.

#### COSTS

You will need to supply overalls and suitable safety footwear.\*

#### LENGTH

Two years.

#### ENTRY REQUIREMENTS

There are no formal entry requirements but a good understanding of Maths and English will be of benefit. Demonstration of reliability, motivation and a keen interest will all be considered.

#### COSTS

There will be a £60 materials fee.\*

\*Financial support may be available for any additional costs. Please enquire.



## MOTORCYCLE MAINTENANCE & REPAIR PRINCIPLES

### CERTIFICATE FTT027

This course covers the technical needs for today's motorcycle repair industry, including the diagnosis of non-complex system faults. It provides essential knowledge for service technicians working on motorcycles in all types of garages and dealerships.

This qualification consists of six Mandatory Units, nine mandatory specialist units and four optional units. All units are either knowledge (K) or skills (S) units. The K or S units are combined to form a topic 'set'. In order to pass the qualification, learners must achieve a minimum of 70 credits from the following groups:

- Group A: 29 credits from the six mandatory units.
- Group B: 37 credits from the mandatory specialist units.
- Group C: A minimum of four credits from one 'set'.
- A minimum of 70 credits must be achieved at Level 2 or above.

Students who complete this course can progress to an Apprenticeship programme. Once employed they will be encouraged to complete the VCQ Level 2 as required.

## MUSIC

### BTEC DIPLOMA FTT028

This course is run at the Academy of Music and Sound in Exeter. The course is split into six units or modules: recording; sequencing; learning about aspects of music; project work or study of the music business and a final major performance that you will help to organise.

The main aim of the programme is to introduce you to productions which have a music emphasis so that you can learn how to prepare for gigs.

In the past, students from other BTEC Diplomas have progressed to the Level 3 Diplomas. From there you can progress to higher education or straight into a profession such as a local/national performer, technician or 'roadie'.

## PERFORMING ARTS

### BTEC DIPLOMA FTT029

This course will help you develop performance skills, as well as a range of disciplines. It's mainly practical and requires team working skills as well as independent learning and a personal discovery of creative expression through acting. It is an ideal course for those who want to become performers but have little practical experience.

Students usually progress to the Extended Diploma in Performing Arts and there will also be future opportunities on specialised higher education courses. You could also go straight into the profession.

## PLASTERING

### DIPLOMA FTT030

This construction course provides the practical skills and knowledge required to successfully embark upon a progression route in college or a career in the construction industry as a plasterer. The focus is based on the practical skills and underpinning knowledge required in the construction industry.

There are nine units including health and safety, knowledge of information Level 2, building methods and technology Level 2 plus the main plastering units, apply plaster materials to external surfaces, fix dry lining and plasterboard products to interiors, form sand and cement screeds, produce plaster components, apply plaster materials to internal surfaces and position and secure fibrous plaster components. All units to be assessed for knowledge by question and answer on our Virtual Learning Environment system. Synoptic practical assessments will take place to check that you have acquired the strict criteria in practical activities. Functional skills in English, Maths and ICT may be included in the programme content.

Full completion of the qualification will allow you to progress to an Apprenticeship (NVQ Diploma L2 in plastering). You must be employed to be able to complete the NVQ Diploma L2.

#### LENGTH

One year.

#### ENTRY REQUIREMENTS

Four GCSEs at grade E and above including Maths, English and a Science or technology subject would be advantageous. Successful completion of the Level 1 motorcycle course.

#### COSTS

You will be required to purchase safety clothing.\*

#### LENGTH

One year.

#### ENTRY REQUIREMENTS

Four GCSEs at grade E and above.

#### COSTS

You will be expected to play your own instrument and keep your own copies of CDs, mini discs, etc - we provide electronic drum kits but you would need to provide your own kit for performances.\*

#### LENGTH

One year.

#### ENTRY REQUIREMENTS

Four GCSEs at grade E or above, plus ambition.

#### COSTS

There will be some costs towards theatre visits and workshops with professional actors/theatre companies.\*

#### LENGTH

One year.

#### ENTRY REQUIREMENTS

Learners must be 16 years of age or over. Completion of the Level 1 course is mandatory and work experience is strongly recommended.

#### COSTS

There will be costs of approximately £30 for materials and course book.\*

\*Financial support may be available for any additional costs. Please enquire.

## **PUBLIC SERVICES**

### **BTEC EXTENDED CERTIFICATE/DIPLOMA FTT031**

The course focuses on the development of knowledge, understanding and practical skills in the Uniformed Public Service sector, offering progression to further education.

The units include Uniformed Public Services Employment, Public Service Skills, Uniformed Public Service Fitness, The Value of Sport and Recreation in the Public Services, Land Navigation with Map and Compass and Expedition Skills. You will be given the opportunity to develop leadership skills, teamwork, fitness and self confidence. We are looking for learners who are interested in a public service, are enthusiastic, have a positive work ethic and be able to smile even when they may be wet and muddy. If successful at attaining the extended certificate you may have the opportunity to complete the Diploma.

On completion students often enlist into the Royal Navy, Royal Marines, Royal Air Force, Army or one of the emergency services. Others go into civilian employment or progress to the Level 3 course at Petroc.

## **SPORT - OUTDOOR ADVENTURE**

### **BTEC EXTENDED CERTIFICATE/DIPLOMA FTT032**

Do you love Outdoor Activities? Do you want to live, breathe and work in the great outdoors? Are you adventurous, determined and enthusiastic? Looking for a course with a difference? Happy to be outdoors whatever the weather? Willing to put in 110%? This course covers both the theoretical and practical aspects of a wide range of land and water based outdoor adventurous activities. Teaching and assessments are based on realistic situations from the world of outdoor education.

On this course we aim to make it as practical as possible; often getting very cold and very wet in the process! An open mind, willingness to try anything and a sense of adventure are essential. The course covers a number of broad themes including improving personal skills and performance in a range of outdoor activities including rock climbing, kayaking/canoing, sea level traversing, surfing, orienteering/navigation, forest skills and expeditions both at home and abroad. We also study coaching and leadership, journeying and environmental aspects.

This course will prepare you for work in the outdoor industry as a trainee or if you get a merit profile you could gain a place on the two year BTEC Level 3 Extended Diploma in Sport (Outdoor Adventure).

## **SUPPORTING TEACHING & LEARNING IN SCHOOLS (TEACHING ASSISTANT)**

### **BTEC CERTIFICATE FTT033**

This course is made up of two qualifications. The first is the BTEC Level 2 Certificate in Supporting Teaching and Learning in Schools, which comprises of four units and is assessed through assignment and other written work. The second element is the NVQ Level 2, which comprises of seven units. These are assessed through a variety of methods, including written assignment work, workbooks and observation of practice by your Petroc assessor. There is a compulsory placement element which must also be passed.

Upon completion of this programme, candidates are able to take up paid employment within the sector. From here, individuals are able to undertake an NVQ Level 3 course, and/or to complete other vocational training and auditing in order to gain Higher Level Teaching Assistant (HTLA) status.

#### **LENGTH**

One year.

#### **ENTRY REQUIREMENTS**

Four GCSEs at grade E or above, including English and Maths.

#### **COSTS**

There will be a chance to buy a Petroc sports kit (optional). Personal outdoor kit will also be essential such as walking boots, a full set of waterproofs and a rucksack. A one off payment is made at the beginning of the course and helps towards small residentials and transport costs.\*

#### **LENGTH**

One year.

#### **ENTRY REQUIREMENTS**

Four GCSEs at grade E or above and an interest in outdoor activities.

#### **COSTS**

Students will be expected to contribute towards travel, residential and additional course costs. There is a course fleece that can be purchased and you will also need to provide your own personal equipment.\*

#### **LENGTH**

This course runs over one year. Lessons run over two days per week in college, with three days a week in a placement setting.

#### **ENTRY REQUIREMENTS**

Learners need to have the ability to work at GCSE grade C level. Government requirements for Teaching Assistants state that a Level 2 qualification in English/Literacy and Maths/Numeracy must be held, so learners must hold or be willing to work towards these. Learners for this course should be 18 or over.

## WOOD OCCUPATIONS - BENCH JOINERY

### DIPLOMA FTT034

This construction course provides the practical skills and knowledge required to successfully embark upon a progression route in college or a career in the construction industry as a bench joiner. The focus is based on the practical skills and underpinning knowledge required in the construction industry.

There are seven units including Health and Safety, Knowledge of Information Level 2, Building Methods and Technology Level 2 plus the main wood occupations units, setting out details, marking out, manufacture of joinery products and safe use of a circular saw. All units to be assessed for knowledge by question and answer on our virtual learning environment system. Synoptic practical assessments will take place to check that you have acquired the strict criteria in practical activities.

Functional skills in English, Maths and ICT may be included in the programme content.

Full completion of the qualification will allow you to progress to a full time Level 3 course in joinery or to an apprenticeship (NVQ Diploma L2 in Joinery). You must be employed to be able to complete the NVQ Diploma Level 2.

## WOOD OCCUPATIONS - SITE CARPENTRY

### DIPLOMA FTT035

This construction course provides the practical skills and knowledge required to successfully embark upon a progression route in college or a career in the construction industry as a site carpenter. The focus is based on the practical skills and underpinning knowledge required in the construction industry.

There are eight units including Health and Safety, Knowledge of Information Level 2, Building Methods and Technology Level 2 plus the main wood occupations units, first fixing, second fixing, structural carcassing, carry out maintenance and safe use of a circular saw. All units to be assessed for knowledge by question and answer on our Virtual Learning Environment system. Synoptic practical assessments will take place to check that you have acquired the strict criteria in practical activities .

Functional Skills in English, Maths and ICT may be included in the programme content.

Full completion of the qualification will allow you to progress to a FT Level 3 course in Carpentry or to an Apprenticeship (NVQ Diploma L2 in Carpentry). You must be employed to be able to complete the NVQ Diploma L2.

#### LENGTH

2 years.

#### ENTRY REQUIREMENTS

Learners must be 16 years of age or over. Completion of the Level 1 course is mandatory and work experience is strongly recommended.

#### COSTS

There will be costs of approximately £30 for materials and course book.\*

#### LENGTH

One year.

#### ENTRY REQUIREMENTS

Learners must be 16 years of age or over. Completion of the Level 1 course is mandatory and work experience is strongly recommended. You will be interviewed and invited to attend a skills day.

#### COSTS

There will be costs of approximately £30 for materials and course book.\*

\*Financial support may be available for any additional costs. Please enquire.



# LEVEL 3

## A LEVELS AND DIPLOMAS

39	<b>Architecture, Surveying &amp; The Built Environment</b> BTEC Subsidiary Diploma
39	<b>Art &amp; Design (Unendorsed)</b> A Level
39	<b>Biology</b> A Level
40	<b>Business Studies</b> A Level
40	<b>Chemistry</b> A Level
40	<b>Communication &amp; Cultural Studies</b> AS Level
41	<b>Critical Thinking</b> AS Level
41	<b>Drama &amp; Theatre Studies</b> A Level
41	<b>English Literature/Language</b> A Level
42	<b>Environmental Studies</b> A Level
42	<b>French</b> A Level
42	<b>Geography</b> A Level
42	<b>History</b> A Level
43	<b>Information &amp; Communication Technology (ICT)</b> A Level
43	<b>Law</b> A Level
43	<b>Mathematics</b> A Level
44	<b>Mathematics (Further)</b> A Level
44	<b>Photography</b> A Level
44	<b>Physics</b> A Level
45	<b>Psychology</b> A Level
45	<b>Sociology</b> A Level
45	<b>Sport (Performance &amp; Excellence)</b> Certificate/Subsidiary Diploma

If you are aiming for the top universities and courses, then our Academic Academy could be for you. See page 61 for more information.

### Entry Requirements

Five GCSEs at grade C or above OR an appropriate qualification at Level 2.



## **Sophie Greenway**

**COURSE:** A Levels

**FORMER SCHOOL:** Oriel Specialist  
Mathematics and Computing College

I started at Petroc in 2008, in my first year I studied Forensics, Psychology and BTEC Sport. In my second year I started A Levels in Photography and Drama and then in my third year completed them.

I found there is a lot of help from lecturers especially nearing exam period when you can get stressed. I decided to change my subjects in the 2nd year and I received a lot of support and guidance with this to make sure I made the right decision. It is an extremely friendly environment where the lecturers go above and beyond to help you succeed.

I was very active in the Student Union and held the position of Green Officer. I also participated in Street Dance, table tennis, Badminton as part of the enrichment programme and was also a member of Petroc's girls football team.

We went on many trips to theatres and to watch plays and productions. Two that I really enjoyed were 'Colour of Nonsense' in Bristol and King Lear by the Royal Shakespeare Company which was performed in Stratford Upon Avon.

I am going to study Drama as a Foundation Degree at Petroc and hopefully after this I will get a place in drama school with the hope to pursue a career in the drama industry.

### ARCHITECTURE, SURVEYING & THE BUILT ENVIRONMENT

#### BTEC SUBSIDIARY DIPLOMA FTT036

This course is equivalent to an A Level incorporating architecture, surveying, health and safety, computer aided design (CAD), construction and the built environment, technology and services and management. Time will be spent investigating the dynamic role of construction and will provide an ideal vehicle either for further/higher education or a career in construction.

Visits to local construction sites are included where possible. Students will also study a number of A Level courses alongside the national award.

This is an ideal vehicle for progression into employment or higher education. Past students have gone on to Oxford to study civil engineering and many other universities to study architecture, building surveying, construction management and coastal engineering to name but a few. In addition, some have moved into employment and continued their studies part time.

### ART & DESIGN (UNENDORSED)

#### A LEVEL FTT037

This course is designed to ensure that students develop their creative talents alongside practical vocational skills. Through a variety of set assignments and briefs, you will explore and experiment with ideas using a range of materials, techniques and processes.

Learners will be given the option to produce art and design, textile or 3D outcomes. Through workshops and self directed exploratory studies learners will gain the skills needed to develop their own unique responses to the exam brief provided. Study is tutorial led, group discussion will help you develop your own abilities to look critically at your work and the work of others as well as developing a critical vocabulary for use in describing your own emerging work.

This course aims to prepare and provide students with the skills and knowledge needed to work in the art and design industry. It also gives students both the qualifications and portfolio of work necessary for entry into higher education or a one year diploma in foundation studies.

### BIOLOGY

#### A LEVEL FTT038

This course develops understanding of biological principles through the study of a wide range of topics including disease, biological variation, ecology and gene technology. Investigative skills are emphasised and recent developments in Biology are considered, together with social and ethical implications of these.

AS Unit 1 biology and disease uses diseases eg cholera to understand body physiology as well as explaining the symptoms and interpreting data. Unit 2 the variety of living organisms, considers genetic and environmental factors as well as the impact of human activity on the environment. Unit 3 brings together the practical skills and knowledge from Units 1 and 2 to complete a practical exercise. A2 Unit 4 populations and the environment examines the role of humans in the environment considering the conflict between human needs and conservation. Unit 5 control in cells and in organisms considers how cells, tissues and organs respond to external and internal stimuli. Unit 6 brings together the practical skills and knowledge of all AS/A2 units to complete a practical exercise.

Combined with the appropriate supporting qualification, students may be able to follow a degree course in subjects such as medicine, veterinary medicine, biological sciences, environmental science, nursing, psychology or physiotherapy. Alternatively, students may want to progress to a higher national course in biological science and related programmes or enter employment in areas such as biotechnology, marine biology and environmental health.

#### LENGTH

One year.

#### ENTRY REQUIREMENTS

Five GCSEs at grade C or above, which must include Maths, English and a science. All prospective candidates will be interviewed as part of the entry process. Do not be put off if your grades are not what they should be, or if you have been out of education for a while, we will take each case on its own merits. You may have other valuable qualities, such as experience, that we can take into account.

#### COSTS

Safety clothing will be required. Students are encouraged to buy the text book accompanying the course.\*

#### LENGTH

AS Level one year, A Level two years.

#### ENTRY REQUIREMENTS

Five GCSEs at grade C or above, or Merits awarded for a minimum of three units in the BTEC First Diploma in Art and Design.

#### COSTS

You may need to buy some basic equipment such as A4/A3 sketchbooks, fabric and specialist materials. This will cost about £40. There will also be a studio fee to cover the cost of basic materials.\*

#### LENGTH

AS Level one year, A Level two years.

#### ENTRY REQUIREMENTS

Five GCSEs at grade C or above, including Maths and English. GCSE grade B or above in Biology or Double Science (higher tier) is a mandatory requirement for this course.

#### COSTS

Textbooks costing approximately £20 per year. There will be an ecology field trip costing approximately £5 to cover transport\*. We offer optional enrichment trips throughout the two years, eg National Science Week and Exeter University.

\*Financial support may be available for any additional costs. Please enquire.

## **BUSINESS STUDIES**

### **A LEVEL FTT039**

One of the challenges and pleasures of studying business studies is that it is a contemporary and ever changing subject as new business problems and solutions arise. This syllabus is suitable for students with a particular concern for social, environmental and ethical issues so you will have a natural advantage if you are interested in current affairs. Students are expected to develop research skills and are required to read a quality newspaper.

In year one you will study two units: planning and financing a business and managing a business. In year two you will study strategies for success, the business environment and managing change.

This course is an ideal preparation for any candidate wishing to study business and management at degree level but also subjects as diverse as politics, sociology, law, accounting and finance and the social sciences.

## **CHEMISTRY**

### **A LEVEL FTT040**

This is a stimulating, practical based course that revises and builds upon the topics that you have covered at GCSE, as well as exploring many new topics such as spectroscopy and the transition metals.

At AS Level, we take familiar topics such as atomic structure and bonding, the periodic table, rates of reaction (and others) and study them in more depth. You find out how and why at AS Level Chemistry and discover explanations for the chemistry you learnt at GCSE.

Approximately a third of the course looks at organic (carbon based) chemistry where you investigate the reactions of different organic families such as alkenes and alcohols and this links very well with biology. You also study interesting new topics such as mass spectrometry and green topics such as the destruction of the ozone layer and what we can do to prevent this. You will study three more units in year two to complete the full A Level.

Many of our students go on to university to study a wide variety of courses as chemistry is essential for medicine, veterinary science, pharmacy, biochemistry, chemical engineering and hundreds of other courses. It is also extremely useful if you want to study other sciences, especially biology and physics. Petroc is successful in getting students into Oxford and Cambridge as well as many other top universities.

Professions such as law, finance and accounting value chemistry students as they are usually good problem solvers and communicators and aren't scared of numbers.

## **COMMUNICATION & CULTURAL STUDIES**

### **AS LEVEL ONLY FTT041**

This is a fascinating course which seeks to develop an understanding of communication and culture theories plus a greater understanding of how our culture influences the way we think and act.

The course is split into two units: Unit 1 explores the theory and practices of communication and culture and how it is applied to everyday life situations. This unit is examined in the Summer term and is worth 50% of the total marks.

Unit 2 is coursework based and requires the student to develop a portfolio, responding to a series of questions set by the exam board and directly related to current cultural and communication issues. This allows students you explores areas that are of interest to them. The portfolio makes up the other 50% of the total marks.

Students who complete the course may have the opportunity to carry on to the second year course. Students will find it is a useful qualification for a range of higher education courses including advertising, public relations, cultural studies, business studies, media, psychology and many more.

#### **LENGTH**

AS Level one year. A Level two years.

#### **ENTRY REQUIREMENTS**

Five GCSEs at grade C or above in appropriate subjects.

#### **COSTS**

Students are required to purchase a course textbook which will cost approximately £20. Students are also advised to read a quality newspaper and can, if they wish, subscribe to the Business Review magazine which will cost approximately £12.\*

#### **LENGTH**

AS Level one year. A Level two years.

#### **ENTRY REQUIREMENTS**

Five GCSEs at grade C or above including a minimum of C/C in Double Science or a C in Chemistry. It is strongly recommended that you have a B/B in Double Science or a B in Chemistry.

#### **COSTS**

We strongly recommend you buy the course text books (one for AS and one for A2). We will advise you on this when you arrive. We also sell exam paper packs for approximately £3. We may organise educational visits and you will be asked to contribute to the cost of these.\*

#### **LENGTH**

AS Level one year.

#### **ENTRY REQUIREMENTS**

Five GCSEs at grade C or above in appropriate subjects, which must include English Language.

#### **COSTS**

Students will be expected to purchase the course textbook costing approximately £16.\*

### CRITICAL THINKING

#### AS LEVEL ONLY FTT042

The course introduces students to the skills of thinking and arguing in a critical and logical way. It will provide a framework which can be applied in a practical manner to a range of materials, situations, problems and issues. It will help you develop skills in reasoning, the ability to assess arguments and understand the credibility of sources and resolution of dilemmas.

Critical thinking provides an excellent support for many other subjects and the students will always be able to construct a sound argument; a very useful transferable skill in all types of employment. Critical thinking tests skills similar to those required by the university entrance tests in specific subjects such as law, bio medics, UK clinical admissions test, the Oxbridge thinking skills admissions test. Studying critical thinking can therefore enhance your skills in these areas and increase chances of success in university entrance tests.

Critical thinking is useful for a wide range of degree courses including law, philosophy, politics, media and journalism, as well as the sciences - enabling clear thinking and focused report writing.

### DRAMA & THEATRE STUDIES

#### A LEVEL FTT043

This course gives you creative opportunities to experience theatre as a performer, designer and audience member; allowing freedom of expression with drama as an art form whilst also acknowledging influential practitioners and the work of professional theatre companies. The focus is on practical performance skills, the art of production, the role of director and the study of play texts throughout the history of theatre. The course will provide a lifelong appreciation of live theatre.

This course can lead to higher education opportunities in drama, theatre studies and performing arts. This course also complements a range of subjects and is extremely useful in building confidence and improving presentation skills in a wide range of careers.

### ENGLISH LITERATURE/LANGUAGE

#### A LEVEL FTT044

During the course, you will explore both literary and linguistic aspects of language, looking not only at poetry, drama and the novel but also at a wide range of non literary texts, both written and spoken. Students then use their knowledge and understanding in the production of their own original writing.

The AS Level examined unit has two sections; an anthology of pre-1900s poetry and a comparison of *In Cold Blood* and *The True History of the Kelly Gang*. The coursework will require two creative pieces and an analytical commentary based on the study of a variety of texts in the genres of Travel Writing and Monologues.

At A2 Level, for the coursework unit you will study two plays to complete an analytical essay. These texts will then help inform your completion of two creative pieces designed to be performed and an analytical commentary. For the exam you will study *Wuthering Heights* by Emily Bronte, together with a variety of non-literary and spoken texts.

English is a subject which is highly regarded both by universities and prospective employers. It demonstrates a high level of accuracy and analytical ability that translates well to other disciplines and the working environment. Students who have studied this A Level in the past have gone on to follow careers in areas such as the media, publishing, teaching and marketing.

#### LENGTH

One year.

#### ENTRY REQUIREMENTS

Five GCSEs at grade C or above in appropriate subjects. It is preferred that students have GCSE English at grade B or above. Mature students are especially welcome on this course as they can make a valuable contribution on the basis of their life experience, providing another alternative interpretation of critical thinking.

#### COSTS

OCR Textbook which costs approximately £18.\*

#### LENGTH

AS Level one year. A Level two years.

#### ENTRY REQUIREMENTS

Five GCSEs at grade C or above in appropriate subjects. It is preferred that you have GCSE English Language/Literature at grade C or above.

#### COSTS

There will be a charge of approximately £100 for theatre trips, visits and practical workshops with professional actors theatre companies.\*

#### LENGTH

AS Level one year. A Level two years.

#### ENTRY REQUIREMENTS

Five GCSEs at grade C or above in appropriate subjects. A GCSE grade C or above in English is a requirement for this course.

#### COSTS

For both the AS and A2 Level, you will be required to buy the studied texts and this can be expected to cost approximately £20.\*

\*Financial support may be available for any additional costs. Please enquire.

## ENVIRONMENTAL STUDIES

### A LEVEL FTT045

This is a stimulating course that will develop your skills in the analysis and solution of complex real world problems. You will study the interaction of humans and the environment.

At AS Level there are two modules. Module 1 looks at how the other living things on the planet are threatened by human activities and how they can be protected. Module 2 looks at the issues around global warming.

The A2 Level course (year two) has a further two modules. Module 1 looks at the global effects of energy supply and at how farming, fishing and forestry supply our growing needs and cause us problems. Module 2 looks at the origin, movement and effects of pollutants and waste.

There are many Environmental Science degrees and Higher National Diplomas. People with degrees in this subject often go on to work for The Environment Agency, nature conservation organisations, local government, education and private industry. Some people work predicting the likely behaviour of pollutants, some track the use and conservation of water and some monitor butterflies! Typically, people start their careers working on hands on projects before they move on to work in a more managerial role.

## FRENCH

### A LEVEL FTT046

This course will build on the skills you developed at GCSE level and you will continue to improve your knowledge of the French language in the key areas of speaking, listening, reading and writing. You will also develop your knowledge of French speaking countries and have the opportunity to participate in a French exchange.

You will study a series of topics about France and French speaking countries. You will study two units at AS Level, one Speaking and the other on Listening, Reading and Writing skills. This format is repeated at A2 Level.

You may decide to continue with languages at university by studying French at degree level or combine it with another foreign language, English, Law, Business and Management, Media or for use in your future career.

## GEOGRAPHY

### A LEVEL FTT047

Geography appeals to students who have an interest in the environment and current affairs, or anyone who enjoys studying a subject that is relevant to their own lives and experiences.

The course covers a diverse range of relevant, contemporary topics including Climate Change; Globalisation; Energy Security; Biodiversity Under Threat; Cultural Diversity; Pollution and Consuming the Rural Landscape; Leisure and Tourism.

AS or A Level Geographers have access to a wide range of possible career and higher education opportunities, as their skills are of great value and in much demand by employers and universities alike.

## HISTORY

### A LEVEL FTT048

This course provides a programme of study which involves a wide and stimulating choice of content areas including British, European and world history. You will be involved in discussions, debates, presentations, controversy, problem solving and group work.

At AS Level students will study a historical theme in breadth, most likely the development of civil rights in the USA between 1945 and 1968 as well as politics and society in the USA from 1968 to 2001. You will also study British history in depth, Britain 1860-1930: the changing position of women and the suffrage question.

At A2 Level students will study a controversial historical period, most likely, Germany from Kaiser to Fuhrer 1900 to 1945 and a coursework based historical enquiry, The making of modern Russia 1856 to 1964.

History is a very acceptable subject for most university courses and the specific areas of study for which it prepares students are history, archaeology, law, teaching, librarianship and information science.

The subject is also useful as employers value people who can write with clarity, present a well reasoned argument and assess evidence intelligently.

#### LENGTH

AS Level one year. A Level two years.

#### ENTRY REQUIREMENTS

Five GCSEs at grade C or above, including Additional Science. A grade B in Additional Science is recommended but is not essential.

#### COSTS

There are field trips throughout the two years which are not compulsory but are highly recommended. They cost less than £5 each. You must buy a copy of the text book at a cost of £24.\*

#### LENGTH

AS Level one year. A Level two years.

#### ENTRY REQUIREMENTS

Five GCSEs at grade C or above, preferably a grade B at GCSE French.

#### COSTS

You will be required to buy a French text book at the beginning of the course. The cost of this is approximately £20.\*

#### LENGTH

AS Level one year. A Level two years.

#### ENTRY REQUIREMENTS

Five GCSEs at grade C or above in appropriate subjects. Geography GCSE is not a requirement.

#### COSTS

£30 core textbook and student unit guide. There will be a small charge for fieldwork visits.\*

#### LENGTH

AS Level one year. A Level two years.

#### ENTRY REQUIREMENTS

Five GCSEs at grade C or above in appropriate subjects, including English Language. It is preferred that you have a GCSE grade C or above in History.

#### COSTS

There may be some costs for educational trips and visits.\*

### INFORMATION & COMMUNICATION TECHNOLOGY (ICT)

#### A LEVEL FTT049

On this course students develop a wide range of ICT skills together with an in-depth knowledge and understanding of ICT. Candidates are encouraged to become discerning users of ICT. Practical elements inspire and challenge providing a sound base for further study and life in general.

The AS Level year is made up of two units, each worth 50% of your AS grade. The examined unit is 'Living in the Digital World'. The coursework unit is 'Practical Problem Solving', where the coursework solutions are also assessed through an exam that allows the learner to show their practical understanding of their solutions.

The A2 Level year adds a further two units. The examined unit is 'The use of ICT in the Digital World', worth 30% of your overall A Level. The coursework unit 'Practical Issues' is an extensive project developing a real world solution, worth 20% of your full A Level.

An AS Level in ICT provides a sound basis for further studies in higher education or employment. Further studies may include ICT specific degrees, or combined business or communication related subjects. Alternatively, it can provide employment opportunities using ICT specifically or with organisations that use ICT systems.

### LAW

#### A LEVEL FTT050

The AS Level course provides a grounding in the main principles of English law and their development, enabling candidates to develop knowledge, understanding and critical awareness of the structure, personnel and functions of our legal system. It covers the courts, judiciary, penal system and legal professions, as well as sources of English law.

At A2 Level your studies will cover general principles of criminal law, including offences such as murder, manslaughter, wounding and grievous bodily harm, theft, deception, burglary, robbery and criminal damage.

Most A Level law students progress to university, often to study law in greater depth but even those who do not go on to study law say that this is a useful A Level to have. Some A Level law students enter the legal profession as trainee legal executives without attending university.

### MATHEMATICS

#### A LEVEL FTT051

This course encourages students to develop their understanding of mathematics and mathematical processes in a way that promotes confidence and fosters enjoyment; to develop their abilities to reason logically and recognise incorrect reasoning; to extend your range of mathematical skills and techniques and use them in more difficult, unstructured problems.

First year core topics include algebra, co-ordinate geometry, sequences and series, an introduction to calculus and an introduction to exponentials and logarithms. Your second year of study builds on topics studied during the first year to increase understanding and add to problem solving techniques.

This is a valuable, well recognised qualification for future life as it shows you have problem solving skills and logical ordered thinking. On completion you can progress to a mathematics related degree course. A Level Maths is a necessary qualification to study physics or engineering at university.

#### LENGTH

AS Level one year. A Level two years.

#### ENTRY REQUIREMENTS

Five GCSEs at grade C or above in appropriate subjects, ideally including Maths and English. No previous ICT experience is necessary, but familiarity with the use of a PC and Microsoft Office applications would be of benefit.

#### COSTS

The course textbook is available for under £20.\*

#### LENGTH

AS Level one year. A Level two years.

#### ENTRY REQUIREMENTS

Five GCSEs at grade C or above in appropriate subjects. English Language in a grade B is desirable.

#### COSTS

Recommended textbooks costing between £12 and £20. You will be advised of these at the start of your course.\*

#### LENGTH

AS Level one year. A Level two years.

#### ENTRY REQUIREMENTS

Five GCSEs at grade C or above in appropriate subjects. A grade B or above in Mathematics at the higher tier is a mandatory requirement for this course.

#### COSTS

Students are required to purchase textbooks at a cost of approximately £35 per year. We strongly recommend you buy a revision guide for each module.\*

\*Financial support may be available for any additional costs. Please enquire.

## FURTHER MATHEMATICS

### A LEVEL FTT052

The course is aimed at those students who enjoy Mathematics, gained A or A\* in their GCSE results and intend to study courses at a higher level with a great deal of Mathematical content, eg Engineering, Astronomy, Mathematics, Actuarial Science, Mathematical Physics. Students must have the maturity to study independently with a modest level of support.

AS Level Further Mathematics enables students to obtain a deeper understanding of the subject by studying the compulsory module Further Pure Mathematics 1. This module covers topics such as series, complex numbers and matrix algebra. You will gain a broader understanding of the range of mathematical subjects through the two extra applied units. Decision Mathematics covers topics such as algorithms, critical path analysis; Linear Programming; Statistics Module 1.

In the second year, Further Pure Mathematics Modules 2 and 3 are studied, together with Statistics Module 2.

AS Level and A2 Level Further Mathematics are valuable, well recognised qualifications for future life; they show you have problem solving skills and logical ordered thinking. Students planning to study Mathematics at university should be aware that an extra AS or A Level in Mathematics is recommended and this course fits that criteria. If you're looking at any form of Engineering or Physics at university, you will be much better prepared with this additional qualification.

## PHOTOGRAPHY

### A LEVEL FTT053

Work in photography must form a means of personal enquiry and expression, in which the selection and manipulation of images produce different meanings. On the course, emphasis is placed on a creative approach which goes beyond mere observation and recording and students will develop practical photographic skills.

The course includes using 35mm and digital SLR cameras, darkroom printing, digital manipulation, image composition and an introduction to the more critical analysis of images. You will also explore the expressive potential of photography. Learners are encouraged to explore a wide range of materials and techniques based on a given theme. Learners will be given the option to produce a range of outcomes. Through workshops and self directed exploratory studies learners will gain the skills needed to develop their own unique responses to the exam brief given to them. Your study is tutorial led. Group discussion will help you develop your own abilities to look critically at your work and the work of others.

Many students go on to study photography or other art and design based subjects at a higher level. There are numerous degree and diploma courses available, from pure photography to combined courses with graphic design, media and art.

## PHYSICS

### A LEVEL FTT054

In this course you will receive a solid foundation in classical physics, sometimes known as the Newtonian World, extending your learning from GCSE in topics such as Newton's laws and momentum, circular motion and oscillations and thermal physics. You will also encounter modern physics (fields, particles and frontiers of physics) including, electric and magnetic fields, capacitors and exponential decay, nuclear physics, medical imaging and modelling the universe. These topics will be explored through experimentation, discussion and problem solving exercises. You are encouraged to think about the application of your subject knowledge beyond the classroom and to take an interest in current developments in the field.

If you are considering going to university, then physics is essential for any engineering course and well regarded in applications for medicine. There are a wide variety of courses in which physics is desirable and a range of courses from theoretical physics to experimental physics with many combined degrees such as physics and finance. Physics graduates are in great demand in industry and commerce; they have excellent problem solving skills and are good with numbers.

#### LENGTH

AS Level one year. A Level two years.

#### ENTRY REQUIREMENTS

Five GCSEs at grade C or above in appropriate subjects. Maths at A\* or A is mandatory for this course. You also need to be studying or have completed and passed A Level Mathematics.

#### COSTS

Students will be responsible for the costs of textbooks associated with the course.\*

#### LENGTH

AS Level one year. A Level two years.

#### ENTRY REQUIREMENTS

Five GCSEs at grade C or above in appropriate subjects or a BTEC Level 2 Diploma in Art and Design (Merit grade).

#### COSTS

You will need to buy some basic equipment such as a memory stick and A4/A3 sketchbooks, plus glue sticks. This will cost about £40. There will also be a studio fee to cover the cost of basic materials. You will have the opportunity to attend various trips.\*

#### LENGTH

AS Level one year. A Level two years.

#### ENTRY REQUIREMENTS

Five GCSEs at grade C or above in appropriate subjects, including English. A grade B or above in Physics/Additional Science and Mathematics are mandatory requirements for this course.

### PSYCHOLOGY

#### A LEVEL FTT055

This course examines many theories that try to explain human behaviour. During the course, you will be involved in discussions, debates, presentations, problem solving and group work.

At AS Level, you will develop a broad knowledge and understanding of the core areas of psychology such as cognitive psychology (focusing on memory); developmental psychology (focusing on attachment in infants); individual differences (focusing on abnormal behaviour); biological psychology (focusing on stress) and social psychology (focusing on social influence). At A2 Level, students cover a range of topic based options including perception, relationships, sleep, schizophrenia and media psychology, which bring together explanations from different psychological approaches and engage students in issues and debates. An understanding of research methodology will be developed throughout AS and A2 Level.

The AS Level is a qualification in its own right and as such, may be used as points towards a university place. The natural progression route however is the A2 Level part of the course. In order to progress to the A2 course, students need to achieve at least a D grade in their AS exam. From A2 Level, many students progress to higher education courses where psychology is fully accepted and recognised as broadly relevant to many courses. It is accepted as a science subject by universities requesting this as an entry requirement. For students who choose an alternative to higher education, psychology is a respected science A level.

### SOCIOLOGY

#### A LEVEL FTT056

On this course you will cover many aspects that underpin the workings of society and acquire essential knowledge and understanding of sociological thought and methods. Analytical and evaluative skills will be developed that provide a sound basis for any courses in higher education.

AS Level learners will complete two modules containing the topics Families and Households, and Education and Sociological Methods. At A2 Level the two modules will focus on Power and Politics; Crime; Deviance; Sociological Theory and Research Methods.

Most students expect to go to university or some other form of higher education. Sociology is particularly useful for those who are considering teaching, law, journalism, medicine, social work, nursing or social policy. It teaches transferable skills of analysis and evaluation which are applicable to all career paths.

### SPORT (PERFORMANCE & EXCELLENCE)

#### BTEC CERTIFICATE/SUBSIDIARY DIPLOMA FTT057

This course looks at developing sports skills in specific areas of sport.

The certificate covers three units over a year, with the subsidiary diploma adding a further three units in year two, making the whole course equivalent to one A Level. The units covered include Anatomy and Physiology, Physiology of Fitness, Assessing Risk in Sport, Outdoor Adventure, Fitness Training and Programming, and Instructing Physical Activity.

This course is ideal for students who want to pursue a career in a sports related higher education course, or a wider range of professions such as those in the sport and leisure industry, the armed forces, public services, management, teaching and outdoor activities industry.

#### LENGTH

AS Level one year. A Level two years.

#### ENTRY REQUIREMENTS

Five GCSEs at grade C or above including English Language/Literature, Maths and Science.

#### COSTS

A textbook will be needed costing approximately £18 at AS Level and approximately £25 at A2 Level, although there are some copies available in the library or from previous students. Revision guides are also recommended (costs range from £5 to £15). There is usually at least one visit to Exeter or Plymouth University Psychology department.\*

#### LENGTH

AS Level one year. A Level two years.

#### ENTRY REQUIREMENTS

Five GCSEs at grade C or above in appropriate subjects, including English Language.

#### COSTS

There will be some costs for text books.\*

#### LENGTH

One or two years.

#### ENTRY REQUIREMENTS

Five GCSEs at grade C or above, preferably including English, Maths and a science, or a BTEC First Diploma or Certificate in a related subject.

#### COSTS

There will be costs of approximately £200 for course admin, clothing and educational trips/visits.\*

\*Financial support may be available for any additional costs. Please enquire.



# LEVEL 3

## DIPLOMA, VOCATIONAL AND ACCESS COURSES

49	<b>Art &amp; Design</b> BTEC Extended Diploma
49	<b>Art &amp; Design</b> Diploma in Foundation Studies
49	<b>Beauty Therapy</b> Diploma
50	<b>Beauty Therapy</b> Diploma
50	<b>Bricklaying</b> Diploma
50	<b>Business (Including Retail &amp; Administration)</b> BTEC Extended Diploma
51	<b>Children's Care, Learning &amp; Development</b> BTEC Extended Diploma
51	<b>Forensic Science</b> BTEC Extended Diploma
51	<b>Hairdressing</b> NVQ Diploma
52	<b>Health &amp; Social Care</b> BTEC Subsidiary/Extended Diploma
52	<b>IT (Business)</b> BTEC Extended Diploma
52	<b>Light Vehicle Maintenance and Repair Principles</b> Diploma
52	<b>Music Practice</b> BTEC Subsidiary/Extended Diploma
53	<b>Personal Training</b> CYQ Certificate
53	<b>Public Services (Uniformed)</b> BTEC Subsidiary/Extended Diploma
53	<b>Sport (Outdoor Adventure)</b> BTEC Subsidiary/Extended Diploma
55	<b>Wood Occupations - Bench Joinery</b> Diploma
55	<b>Wood Occupations - Site Carpentry</b> Diploma
57	<b>Access to Higher Education</b>

### Entry Requirements

Five GCSEs at grade C or above OR an appropriate qualification at Level 2.



**Ashley Knight**

**COURSE:** National Diploma in Art and Design

**FORMER SCHOOL:** Uffculme School

I started at Petroc in 2010 and am studying the National Diploma in Art and Design specialising in fashion, photography and graphics.

I have really enjoyed my first year at Petroc and it is much better than school because you can concentrate on the subjects that interest you.

I want to carry on at Petroc and complete my second year and then progress onto University in one of my specialisms.

### ART & DESIGN

#### BTEC EXTENDED DIPLOMA FTT058

This is a two year course designed to ensure students develop their creative talents alongside practical vocational skills and enable you to make decisions about your future career.

After an introductory phase which aims to develop a wide range of art and design skills, you will select specialist units working on a range of practical and vocational assignments to prepare a portfolio of work in your chosen specialist area. The course encourages learners to consider a range of art and design pathways whilst also offering specific specialist pathways in photography and graphic design. You will be encouraged to push the boundaries of art and design to help you progress your aspirations for the future.

This course aims to prepare and provide students with the skills and knowledge needed to work within the creative industries. It gives students both the qualifications and portfolio of work necessary for entry into higher education or our one year diploma in foundation studies. It can also lead to a range of interesting and exciting employment opportunities in a variety of creative art and design settings.

### ART & DESIGN

#### DIPLOMA IN FOUNDATION STUDIES FTT059

This course helps students to make informed decisions about which specialism (eg graphic design, photography, fashion design, textile design, fine art, illustration etc) they wish to follow. Most students then develop a high quality portfolio for successful progression to higher education or employment in the creative industries.

There are three stages. The exploratory stage in the Autumn term covering four units, the pathway stage in the Spring term working in specialist areas covering three units and the confirmatory stage in the Summer term, producing two final units and culminating in a public exhibition of student work.

This course enables you to develop a strong portfolio of individual work to progress to higher education on a wide range of courses including fine art, fashion design, textile design, graphic design, illustration, photography or any other discipline that requires you to demonstrate your creative potential.

Career opportunities within the creative industries are many and varied. Many students progress to higher education and some seek direct employment immediately after the foundation course.

### BEAUTY THERAPY

#### DIPLOMA FTT060

An intensive course of study in all aspects of Beauty Therapy including practical skills of make up, nail and eye care, facial care, electrical treatments, body massage, sports therapy, spa therapy, anatomy and physiology, dermatology and research into the scientific background to the treatments used in Beauty Therapy.

The course equips you with the skills to enter employment in the beauty industry or progress to a higher national diploma in beauty related subjects.

#### LENGTH

Two years.

#### ENTRY REQUIREMENTS

Five GCSEs at grade C or above, including Art and Design or a BTEC Diploma in Art and Design at Level 2. You will be requested to provide a portfolio of recent art work showing your skills and interest in Art and Design which reflects your chosen specialism.

#### COSTS

At the beginning of the course learners will need to buy some basic equipment and sketchbooks costing approximately £25. There will also be a studio fee of £90 per year which covers general costs of studio equipment and specialist materials.\*

#### LENGTH

One year.

#### ENTRY REQUIREMENTS

Most students will have completed a two year A Level programme including an Art and Design A Level, or a BTEC Diploma in Art and Design, Photography or Graphic Design. Alternatively, applicants are required to demonstrate their commitment and ability with a portfolio of work. A small number may have completed an AS Level programme before progressing to the foundation course.

#### COSTS

There are no course fees for students under 19 years old, however, if you are over 19 then there will be a fee of around £2,500. You will need to buy some basic equipment plus sketchbooks at the beginning of the course which will cost about £60. There will be a studio fee to cover the cost of basic materials of £90 for the year.\*

#### LENGTH

Two years.

#### ENTRY REQUIREMENTS

Four GCSEs at grade C or above including English and Science.

#### COSTS

Salon uniform, personal equipment and set books will cost approximately £400. Further costs will be incurred for educational visits, manufacturers diploma courses and similar activities.\*

\*Financial support may be available for any additional costs. Please enquire.

## **BEAUTY THERAPY**

### **DIPLOMA FTT061**

A high percentage of the course is dedicated toward development of practical skills which take place in the College's well equipped salons. The College welcomes the public as paying clients to allow students to carry out formalised assessments to meet required standards. A strong emphasis is placed on theoretical knowledge to support practical application, with coursework also forming a major part of the assessment. There is an online exam.

You will train using Professional Skin Care products. A high percentage of the course is dedicated towards the development of practical skills and you will have the opportunity to the work as part of the college salon, offering treatments to clients. There is a strong emphasis on theoretical knowledge and 12-15 hours of self directed study will be needed each week in addition to class time to ensure that the assignment work and research can be completed.

Students who have successfully completed the course are now working throughout the UK and abroad in many different areas of the beauty therapy industry including city salons, health farms, sport and leisure complexes, department stores, cruise ships and airlines.

## **BRICKLAYING**

### **DIPLOMA FTT062**

This course is for the more experienced bricklayer wishing to study the more intricate and technical aspects of brickwork and look at sustainable/green aspects of the trade. One written assignment, six end of unit exams, one end of year exam and assessed practical assignments, including curved work, tumbling in work, axed arch work, decorative panel work and decorative fire place work.

You can progress to the Level 4 Site Management course, offered here at Petroc.

## **BUSINESS (INCLUDING RETAIL & ADMINISTRATION)**

### **BTEC EXTENDED DIPLOMA FTT063**

This programme offers a broad introduction to business related topics with opportunities to explore more specialist areas such as law, retailing and administration.

Consisting of 100% coursework, learners cover nine units in year one and a further nine in year two. The programme assumes that learners have no pre-existing business knowledge and begins with introductory units covering the core areas of the business environment, business resources and communications, marketing, business accounting and human resource management. Building on this key foundation, learners are encouraged to explore more specialised areas such as creative product promotion, understanding retailing, business ethics, administration routes and business law.

The Extended Diploma in Business provides you with the knowledge, skills and attitudes that will be required in a variety of business occupations. Some students progress to further study at university, others enter the world of banking, retail management, accountancy training, administration and marketing occupations.

#### **LENGTH**

One year.

#### **ENTRY REQUIREMENTS**

To meet commercial standards, achievement of Level 2 is essential before progressing to Level 3, level 2 will need to have been completed at merit and distinction level with over 85% attendance.

#### **COSTS**

There will be approximate costs of £180 for uniform, books and kits. £50.00 salon fee. Additional courses and trips offered by the College will be payable by each student.\*

#### **LENGTH**

September 2011 to 2012. One week intensive for 11 weeks over the year.

#### **ENTRY REQUIREMENTS**

The Level 2 Trowel Occupations qualification.

#### **COSTS**

You will be expected to pay for your own personal protective equipment, which will be confirmed by your tutor.\*

#### **LENGTH**

Two years.

#### **ENTRY REQUIREMENTS**

Five GCSEs at grade C or above. A Merit grade from a Level 2 qualification is also acceptable.

#### **COSTS**

You may have the opportunity to attend various trips for which there may be a cost.\*

### CHILDREN'S CARE, LEARNING & DEVELOPMENT

#### BTEC EXTENDED DIPLOMA FTT064

This is a very fast moving and demanding programme which requires you to link theory to practice both in college and during all of the block placements, as well as completing a professional practice portfolio.

A wide variety of topics which relate to the theory and practice of children's care learning and development are covered in college, plus there is a requirement to satisfactorily complete 800 hours of assessed work experience. These together lead to being given a Licence to Practice as a Level 3 practitioner.

Most students who gain this professional childcare qualification go straight into employment in nurseries, schools or as private nannies. Some students who have completed this course with the required UCAS points have progressed to higher education courses at Petroc and elsewhere.

#### LENGTH

Two years.

#### ENTRY REQUIREMENTS

Five GCSEs at grade C or above (ideally including English, Maths and a science). You will need to show the interpersonal and teamwork skills to work effectively in placements for long blocks. Offers will be subject to satisfactory Criminal Record Bureau (CRB) checks.

#### COSTS

A CRB check costs approximately £55. Although work placements are made with consideration to individual needs and transport routes, there may be costs involved for the students.\*

### FORENSIC SCIENCE

#### BTEC EXTENDED DIPLOMA FTT065

This course offers students an intriguing mix of both science and social science, focusing on the varied work carried out by forensic scientists. This will enable you to gain both a theoretical and practical feel for this fascinating and progressive field of study.

Where possible, students are offered practical exercises to put their theory into practice. The content is diverse covering aspects of psychology, law, photography and ICT as well as physics, chemistry and biology.

On completion of the course, you could seek employment immediately (eg as a trainee in a forensic laboratory) or progress to higher education to read for a number of higher national diplomas or degrees including forensic science, criminal psychology, criminology and other science related courses.

#### LENGTH

Two years.

#### ENTRY REQUIREMENTS

Five GCSEs at grade C or above, including Science, Maths and English.

#### COSTS

There will be field trips organised which cost approximately £5 each.\*

### HAIRDRESSING

#### NVQ DIPLOMA FTT066

This course provides a programme of study designed to provide students with practical training. In addition to developing advanced fashion techniques, the course covers information related to general salon operations and promotions. It will include Health and Safety, Client Consultation, Promoting Services and Products, Cutting, Colouring, Fashion Styling, Long Hair Styling and Competition Work.

Once you have gained a reasonable degree of commercial competence you may wish to continue your studies in order to gain further qualifications, or continue training whilst in the workplace.

#### LENGTH

One year and one term (over three days a week).

#### ENTRY REQUIREMENTS

A Level 2 NVQ qualification or four GCSEs at grade C or above including English and Science, and/or a relevant Hairdressing qualification.

#### COSTS

Salon uniform, personal equipment and set books will cost approximately £200. Further costs will be incurred for educational visits.\*

\*Financial support may be available for any additional costs. Please enquire.

## HEALTH & SOCIAL CARE

### BTEC SUBSIDIARY/EXTENDED DIPLOMA FTT067

This programme prepares students for working in a variety of health and care settings. You will have the opportunity of gaining work experience in areas of interest and will also gain knowledge and skills in first aid and infection control.

Core areas include Psychology/Sociology, Health and Safety, equality, diversity and rights, professional practice, communication, anatomy and physiology. Optional units are chosen according to staff expertise each year.

Career possibilities include many university opportunities to study nursing, midwifery, children's nursing, social work, youth work and teaching. Some students choose to develop their career through working and studying through the apprenticeship route.

## IT (BUSINESS)

### BTEC EXTENDED DIPLOMA FTT068

This qualification is a practical, work related course, which has been designed to meet the needs of those who wish to work in ICT, systems analysis and design, and software engineering. It will also give you a good foundation for work in business and other areas of the IT industry. The qualification is available as a subsidiary diploma (equivalent to one A Level), diploma (two A Levels) and extended diploma (three A Levels).

Students have the choice of either seeking employment immediately (eg as a trainee engineer, support analyst or web designer) or progressing to higher education. Further studies may include a foundation or bachelors degree, or BTEC higher national diploma in subjects such as computing, computer science, software engineering or business management. Foundation degrees in computing or business computing are available at Petroc.

## LIGHT VEHICLE MAINTENANCE AND REPAIR PRINCIPLES

### DIPLOMA FTT069

This qualification is designed to further increase opportunities for individuals who would like to enter the motor industry. The course develops manual skills and the student's knowledge of vehicles gained at Level 2.

The qualification is made up of three components, practical tasks, online testing and written assignments. Diagnostic skills associated with vehicle maintenance and repair form a substantial part of the content.

Students who complete this programme can progress to employment within the motor industry. The qualification forms the knowledge component of the apprenticeship framework, and once employed they will be encouraged to complete further qualifications as required.

## MUSIC PRACTICE

### BTEC EXTENDED DIPLOMA FTT070

This course is run at the Academy of Music and Sound in Exeter delivering instrument specific, (guitar, bass, drum and vocal) rock and popular music courses in state of the art music studios with experienced teachers and working musicians.

Students can progress from the extended diploma to higher education courses at Petroc or elsewhere, or pursue various career opportunities within the music industry such as performing and recording in a band, working as a session musician or teaching.

#### LENGTH

Two years.

#### ENTRY REQUIREMENTS

Five GCSEs at grade C or above, including Maths, English and a science.

#### COSTS

Approximately £55 for a mandatory Criminal Records Bureau (CRB) check. Potential cost of approximately £250 for a residential which occurs every two years. The current residential is to Disneyland Paris. A polo shirt may also be required, you will be advised of costs.\*

#### LENGTH

Two years.

#### ENTRY REQUIREMENTS

Five GCSEs at grade C or above, ideally to include Maths and English, or a Merit in the BTEC Level 2 Diploma in IT or equivalent. Just as important as your formal qualifications is your enthusiasm for IT. You must be willing to develop a good all round knowledge of IT; this includes the ability to prepare accurate reports on your research and work.

#### COSTS

Students on this course will need a USB flash drive (memory stick) which should not cost between £5 and £7.\*

#### LENGTH

One year.

#### ENTRY REQUIREMENTS

The requirements are that students have completed the Level 2 Diploma in Vehicle Maintenance. GCSE grade C or above in Maths, English or ICT would be an advantage. Assessment of the students prior knowledge and experience at interview will determine entry onto the course.

#### COSTS

You will need to supply overalls and suitable safety footwear.\*

#### LENGTH

Two years.

#### ENTRY REQUIREMENTS

Five GCSEs at grade C or above (preferably with English) and an ability to play your first instrument to a reasonable level of competence. You will usually have been playing for over 18 months and be expected to attend an assessment.

#### COSTS

You will need to provide your own instrument (unless you are a drummer). Students are expected to contribute towards the master class enrichment weeks. Otherwise, equipment (such as headphones and amplifiers) is provided by the Academy.\*

### PERSONAL TRAINING

#### CYQ CERTIFICATE FTT071

This course is ideal for people who wish to become Personal Trainers and who wish to work towards improving clients well-being, through the provision of a planned personal exercise programme on a regular one to one or small group basis. It is also suitable for mature students who are already working as personal trainers but do not possess a nationally recognised qualification. An approved gym qualification at Level 2 is a pre-requisite for this qualification.

The course content covers anatomy and physiology, nutrition, programming and delivering personal training and health and safety.

On successful completion of the course you can apply for employment as a Personal Trainer in a leisure centre or health club, start your own business, or undertake further study in areas such as GP Referral or Cardiac Rehabilitation. This course is not suitable for applicants straight from school. The course is a good progression for those who have completed the Level 2 Diploma in Exercise and Fitness course, A Levels, a BTEC National Qualification or mature students looking for a career change or professional development.

### PUBLIC SERVICES (UNIFORMED)

#### BTEC SUBSIDIARY/EXTENDED DIPLOMA FTT072

This course focuses on the development of knowledge, understanding and practical skills necessary for employment in the public services, providing career development and offering progression to higher education or further training in the public services sector.

The course covers areas such as Government policies and the public services, leadership and teamwork, citizenship, diversity and the public services, understanding discipline, physical testing and training for the uniformed public services, physical preparation and health.

On completion of this course students often progress to university, go into the Royal Navy, Royal Marines, Royal Air Force, Army or one of the emergency services.

### SPORT (OUTDOOR ADVENTURE)

#### BTEC SUBSIDIARY/EXTENDED DIPLOMA FTT073

Do you love outdoor activities? Do you want to live, breathe and work in the great outdoors? Are you adventurous, determined and enthusiastic? Looking for a course with a difference? Happy to be outdoors whatever the weather? This could be the course for you! It covers both the theoretical and practical aspects of a wide range of land and water based outdoor adventurous activities. Teaching and assessments are based on realistic situations from the world of outdoor education.

Memorable times guaranteed! On this course we aim to make it as practical as possible. Often getting very cold and very wet in the process! An open mind, willingness to try anything and a sense of adventure are essential. The course covers a number of broad themes including improving personal skills/performance and coaching in a range of outdoor activities including rock climbing, kayaking/canoeing, sea level traversing, surfing, orienteering/navigation, forest skills, and expeditions both at home and abroad.

This course will prepare you for work in the outdoor industry or for a place on one of many exciting university courses.

#### LENGTH

It is anticipated that the course will run one day per week for 32 weeks.

#### ENTRY REQUIREMENTS

For this course you will need to be at least 17 years old and should have a minimum of four GCSEs at grade C or above, including Maths and English (equivalent qualifications and experience will be considered for mature students). The pre-entry requirement is a Level 2 Fitness Instructor. For students who do not have this qualification, there may be an opportunity to study for Gym Instructor whilst on the Personal Trainer course. You must be a regular participant in fitness sessions, especially gym, as the course is aimed at those who have experience in fitness.

#### COSTS

Fees can be obtained on request for those over 19 years old.\*

#### LENGTH

One year (subsidiary). Two years (extended).

#### ENTRY REQUIREMENTS

Five GCSEs at grade C or above or a BTEC Level 2 Diploma in a related subject. Appropriate work experience and/or other related Level 2 qualifications.

#### COSTS

Costs will also be applicable for an annual residential, transport for trips/outdoor activities and clothing. These will be discussed at the interview.\*

#### LENGTH

Subsidiary diploma one year, extended diploma two years.

#### ENTRY REQUIREMENTS

Five GCSEs at grade C or above with at least a grade D in English. Practical experience in at least one relevant outdoor activity.

#### COSTS

Students will be expected to contribute towards travel, residential and additional course costs. There is a course fleece that can be purchased and you will also need to provide your own personal equipment.\*

\*Financial support may be available for any additional costs. Please enquire.



**Charlotte Austin**

**COURSE:** BTEC in Business and Law

**FORMER SCHOOL:** Uffculme School

I've had a positive experience at Petroc and enjoyed my first year.

I've met some friendly people and actually like my teachers!

### WOOD OCCUPATIONS - BENCH JOINERY

#### DIPLOMA FTT074

This construction course provides the practical skills and knowledge required to successfully embark upon a progression route in college or a career in the construction industry as a Bench Joiner. The focus is based on the practical skills and underpinning knowledge required in the construction industry.

There are six units including Health and Safety, Knowledge of Information, Building Methods and Technology plus the main wood occupations units, set up and use fixed and transportable machinery, manufacture complex shaped joinery products and Produce complex shaped joinery product details. All units to be assessed for knowledge by 'question and answer' on our Virtual Learning Environment system. Synoptic practical assessments will take place to check that you have acquired the strict criteria in practical activities. Functional skills in English, Maths and ICT may be included in the programme content.

Full completion of the qualification will allow you to progress to employment (Apprenticeship NVQ Diploma Level 3 in Bench Joinery), further training or higher education.

### WOOD OCCUPATIONS - SITE CARPENTRY

#### DIPLOMA FTT075

This construction course provides the practical skills and knowledge required to successfully embark upon a progression route in college or a career in the construction industry as a Site Carpenter. The focus is based on the practical skills and underpinning knowledge required in the construction industry.

There are eight units including Health and Safety, Knowledge of Information, Building Methods and Technology plus the main wood occupations units, carry out first fixing operations, carry out second fixing, erect complex structural carcassing components, maintain non-structural and structural components and set up and use fixed and transportable machinery. All units to be assessed for knowledge by 'question and answer' on our Virtual Learning Environment system. Synoptic practical assessments will take place to check that you have acquired the strict criteria in practical activities. Functional skills in English, Maths and ICT may be included in the programme content.

Full completion of the qualification will allow you to progress to employment (Apprenticeship NVQ Diploma Level 3 in Site Carpentry), further training or higher education.

#### LENGTH

One year.

#### ENTRY REQUIREMENTS

Completion of the Level 2 course in bench joinery is mandatory and work experience is strongly recommended.

#### COSTS

There will be costs of approximately £30 for materials and course book.

#### LENGTH

One year.

#### ENTRY REQUIREMENTS

Completion of the Level 2 course in site carpentry is mandatory and work experience is strongly recommended.

#### COSTS

There will be costs of approximately £30 for materials and course book.\*

\*Financial support may be available for any additional costs. Please enquire.



# ACCESS COURSES

Access is for adult learners who want to take a university level course, but lack the normal entrance requirements for Higher Education.

The courses are recognised by universities and other HE institutions as an alternative to standard A Level entry.

The aim of the course is to open doors to study for applicants who do not have the specific A Level qualification pre-requisites that they normally need to enter a degree programme.

There are many reasons why this route may suit you; you may be a student who has completed some qualifications and can show the right level of skill and maturity for this programme or you may be a mature applicant and who has not studied A Levels but possesses a wealth of experience in your chosen field. The courses provide a broad programme of study that includes core modules and more specialist modules that will enable you to progress.

## ACCESS TO HIGHER EDUCATION

### FTT60

Access to HE is for learners who wish eventually to take a university level course, but who lack the normal entrance requirements for higher education. The course is recognised by universities and other higher education institutions as an alternative to standard A Level entry.

This is a credit based qualification. All students take the core parts of the course, which include ICT, Essential Maths or English at Level 2 and Study Skills at Level 3. In addition, each student chooses two or three options from the following, worth 15 Level 3 credits each; Psychology, Sociology, Health studies, Biology, Literary studies, Cultural studies, Geography or Biology.

In order to achieve the full Diploma, students must achieve 60 credits over all.

Those taking the Diploma go on to take degrees in a wide range of subjects, leading to careers such as nursing, midwifery, occupational therapy, para medicine, social work, teaching, music production, digital animation, or in the field of law, geography, zoology, animal behaviour and psychology.

### LENGTH

The course is full time, timetabled over four days per week, and completed in one academic year.

### ENTRY REQUIREMENTS

Students must achieve a level 2 in their Literacy Initial Assessment and a level 1 in their Numeracy Initial Assessment. Students may also be asked to produce a piece of free-writing under controlled conditions.

### COSTS

£400 tuition fees plus £110 registration fee with the Open College.\*

\*Financial support may be available for any additional costs. Please enquire.



We want to take you further. We offer Higher Education courses in partnership with local industry and Plymouth University. When you study with us you benefit from staying in the local area, small class sizes, specialist lecturers and the learning facilities of both Petroc and Plymouth University. See where we can take you.

## ART

- FdA Ceramics
- FdA Community Dance Practice
- FdA English with History/History with English
- FdA Fine Art
- FdA Illustration
- FdA Theatre: Performance and Production

## BUSINESS

- FdA Business
- FdA Business and Computing
- FdA Business and Management
- FdA Events Management

## IT & ENGINEERING

- FdSc Computing
- HNC Construction
- FdSc Digital Technology
- FdSc Electronics & Communications with embedded HNC
- FdSc Mechanical Design & Manufacture with embedded HNC

## MUSIC

- FdA Music Performance
- FdA Music Technology & Production

## SCIENCE

- FdSc Environmental Health
- FdSc Human Biosciences
- FdSc Psychology with Sociology

## SPORT

- Foundation Degree in Sport; Coaching, Health and Fitness

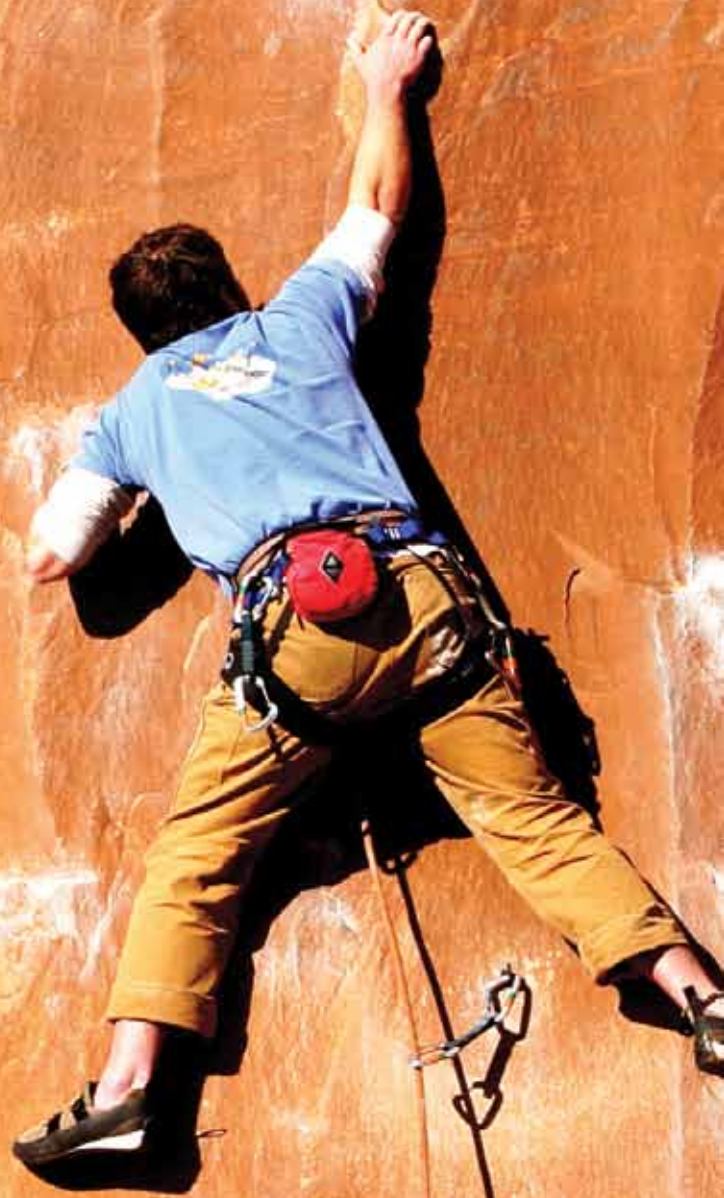
## SKILLS, CARE & EDUCATION

- Certificate in Education incorporating the Diploma in Teaching in the Life Long Learning Sector
- FdA Early Childhood Studies
- FdSc Health & Social Care

Want to find out more?

Contact our Higher Education team on **01271 338100** or see our **Higher Education guide**.  
[www.petroc.ac.uk](http://www.petroc.ac.uk)

**EXCITEMENT  
ENTERTAINMENT  
ENRICHMENT**



# THERE'S MORE TO PETROC THAN STUDYING

Whether you want to give your body – or your brain – a proper workout, explore other countries, do your bit for charity, brave the great outdoors, show off your creative talent or become a business tycoon, Petroc in Tiverton offers you more.

There are a host of activities and opportunities to go beyond the classroom.

## THE ACADEMIC ACADEMY

A specialised tutor group for students who achieve seven or more GCSEs at grade A or A\*. The Academic Academy has been designed to provide you with the opportunity to enhance your analytical and evaluative skills, both written and oral. Tutors encourage and support you with applications into top universities, such as Oxford and Cambridge, and highly competitive courses, such as medicine, veterinary science, law and psychology.

All students will do Critical Thinking as a fifth A Level alongside an extended project of your own interest – this project is highly valued by top universities.

Petroc's Tiverton Campus offers all the A Level subjects you could need to get a First Class Degree and the College is recognised as the South West regional lead for STEM (Science, Technology, Engineering and Maths) subjects.

Other Academic Academy activities include the Senior Maths Challenge and Science Olympiad.

## THE FOOTBALL ACADEMY

Since 2006, Petroc's Football Academy teams have progressed from the lower leagues to League 1 and 2 of the South West College's Leagues.

Top players also get the chance to play in Tiverton Town Football Club's under-18s, Tiverton Town's first team and Devon under-18s.

## ENRICHMENT ACTIVITIES

Petroc has many extra activities to choose from, which can improve your qualifications and job prospects.

They include:

**The Duke of Edinburgh's Award Petroc Creative** – a magazine, celebrating our students' creativity, as well as the talents of pupils from our local secondary schools

**Enterprise at Petroc** – for budding entrepreneurs, this Young Enterprise option is for anyone who fancies the idea of entering the Dragons' Den or trying to become The Apprentice  
**Environmental Twinning** – we're working with the energy company EDF to build links with a college in France, including exchange visits.

## SPORT AND RECREATION

No matter what previous experience or ability you have, you're encouraged to take up sports and recreational activities, including our new **Outdoor Club** for adventures in the wilds of Britain and Europe. There are opportunities for personal fitness training, including a range of classes. You can also join our brand new **Fitness Centre**, with the latest cardio-vascular equipment.

Sports fields for hockey, football and rugby are just across the road from the main campus, where there is also an indoor swimming pool, along with tennis courts and all-weather AstroTurf pitch.

Teams take part in local, regional and national fixtures and interested students can take National Governing Body of Sports Awards, which can lead to qualifications in coaching and supervision. We also offer the Community Sports Leaders Award.

## THE MUSIC BOX

Petroc's internal radio station run by students for students. Join the team of presenters and 'behind the scenes' workers, help plan the shows, promote the station, make jingles and train new team members. It is an excellent platform for building up your skills and some of its presenters have gone on to specialise in radio presenting at university and find employment in the broadcasting industry. Interested? Then drop into the Student Union for a chat.

## THE MUSIC ACADEMY

Music at Petroc is alive and vibrant. You may already be in a band, want to record your tracks or learn more about the exciting world of music.

Petroc, in association with The Academy of Music and Sound, in Exeter, delivers instrument specific (guitar, bass, drum and vocal) rock and popular music courses in state of the art music studios with experienced teachers and working musicians.

## INTERACT

Interact with us, tell us what you think, ask us questions, browse our courses, find out more – scan this with your smartphone....



# PROMOTE SUPPORT UNITE



# THE STUDENT UNION (NUS)

The vision of the NUS is to be a pioneering, innovative and powerful campaigning organisation: the definitive national voice of students. They strive to fight barriers to education; empower students to shape both quality learning experience and the world around them, supporting influential, democratic and well-resourced students' unions.

Members not only get the chance to shape the future, but access to careers advice, competitions and discounts at leading high street stores in fashion, travel, food etc.

The executive are all members of Petroc; democratically elected in an election held every year.

## A WORD FROM THE PRESIDENT

The main aim of Petroc Student Union is to provide you with a voice on all happenings within the College as well as the power to change things for the good of all students.

We are also here to make sure you have a great time at Petroc, so we put on parties and charity fundraising events (including RAG Day) throughout the year, the climax of these being the 'Summer Ball'; a chance to wish each other a good summer if you're coming back next year or to say goodbye to some old friends.

My main job as President is to manage the executive team and make sure we are giving you, as students, the best chance to make a difference in your life and in the college as a whole.

To all potential first years; I know personally how scary it can be coming into a new place. I was born in Scotland, so the move to Tiverton was very scary! But the Student Union is here to help and I would whole-heartedly encourage you to get involved as much as possible and enjoy yourselves.

Have a good year and we'll see you in September 2012.

**Michael Wilson**

Petroc Tiverton SU President 2011-12

# INFORMATION ADVICE GUIDANCE

When you join Petroc an induction programme will introduce you to your studies, your fellow students, your personal tutor and our facilities.

Your tutor will often be one of your lecturers. They will monitor your progress and help you plan for your future. They are the first person you should turn to for advice and, if they can't help, they'll put you in touch with someone who can.

Petroc has a Student Support team that can help with problems relating to accommodation, finances and other personal issues, or you may prefer to talk to one of our specialist counsellors. Our nurse provides first aid and medical advice, as well as running a series of clinics, which give confidential advice on more personal matters.

**ALL OF OUR  
STUDENT SUPPORT  
SERVICES ARE  
CONFIDENTIAL AND  
FREE OF CHARGE.**





## **SUPPORTING YOUR STUDIES**

Petroc has learning resource centres with materials, equipment and staff to help you. Our library offers a wide ranging stock of books, periodicals and CD-ROM facilities, as well as a team of helpful staff.

Petroc welcomes applications from everyone and we will help you succeed.

When additional needs are identified, learning support is available, including specialist help for people with specific learning difficulties and/or disabilities. Your tutor and your lecturers will help with study skills and refer you to other sources of help.

We also offer the opportunity to upgrade your numeracy, language and literacy skills through a range of courses and qualifications.

## **CAREERS**

During your time at Petroc, we will encourage you to think about your future. Your tutor will guide you through an Individual Action Plan and regular reviews.

Our Guidance Centre has a very large stock of books, prospectuses and computer-based materials to help you plan your next steps. There is also a comprehensive programme of visiting speakers and careers events.

Petroc works closely with Careers South West (formally Connexions) and careers/personal advisors are available for one to one interviews.

## **FINANCIAL HELP**

If you need help with money to pay for things like specialist equipment or childcare, we may be able to help, via the Bursary Fund or Adult Learner Support Fund. Further details are available from The Guidance Centre.

## **ACCOMMODATION**

If you live too far from Petroc to travel home every day, we can help you find accommodation. Our Guidance Centre will refer you to our Student Support Team who can go through your requirements with you, and may be able to help secure appropriate housing.

As a student, you may be able to get help from the Government, in the form of Housing Benefit. Much will depend on your age and circumstances.

Our support team can advise you.

## **TRANSPORT**

Travel to and from Petroc is provided by Devon Local Education Authority (LEA), as long as you live within our designated area, attend college full time, are aged under 19 and live more than three miles from our main campus.

If you live in the catchment area of another sixth form or college and want to study A Levels with us, you will not be entitled to LEA support but we can arrange transport for you.

You may be entitled to assistance with your transport costs from the Learner Support Fund.

## **CHILDCARE**

Students with young children may find the day nursery on Petroc's main campus helpful. Places are limited and a charge is made for the service but, if you are receiving certain types of benefit, we may be able to pay the fees for you. The Government also runs a childcare support scheme for students under the age of 19, called 'Care to Learn', which is designed to allow young learners with children the opportunity to continue their studies.

**For further information please contact  
The Guidance Centre on 01884 235330**

# EQUALITY DIVERSITY INCLUSION

**At Petroc, we want everyone to feel valued and be treated with respect. Everyone is welcome here and that's what makes it a great place to learn and work.**

Applications are welcome from everyone, regardless of disability, race, sex, sexual orientation, religion or belief, pregnancy and maternity, marital or civil partnership status, or gender reassignment.

We believe that we can all work together to get the best out of our college experience in a fun and friendly environment.

It's simple - it's all about showing respect and consideration: showing respect to each other, the environment and our neighbours in and around the college.

Stopping anti-social and disrespectful behaviour is also important so we will approach you if you are dropping litter or smoking in a non-smoking area.

If you have any complaints or concerns, you can report it to us and we will take action to stop it and support you as well.

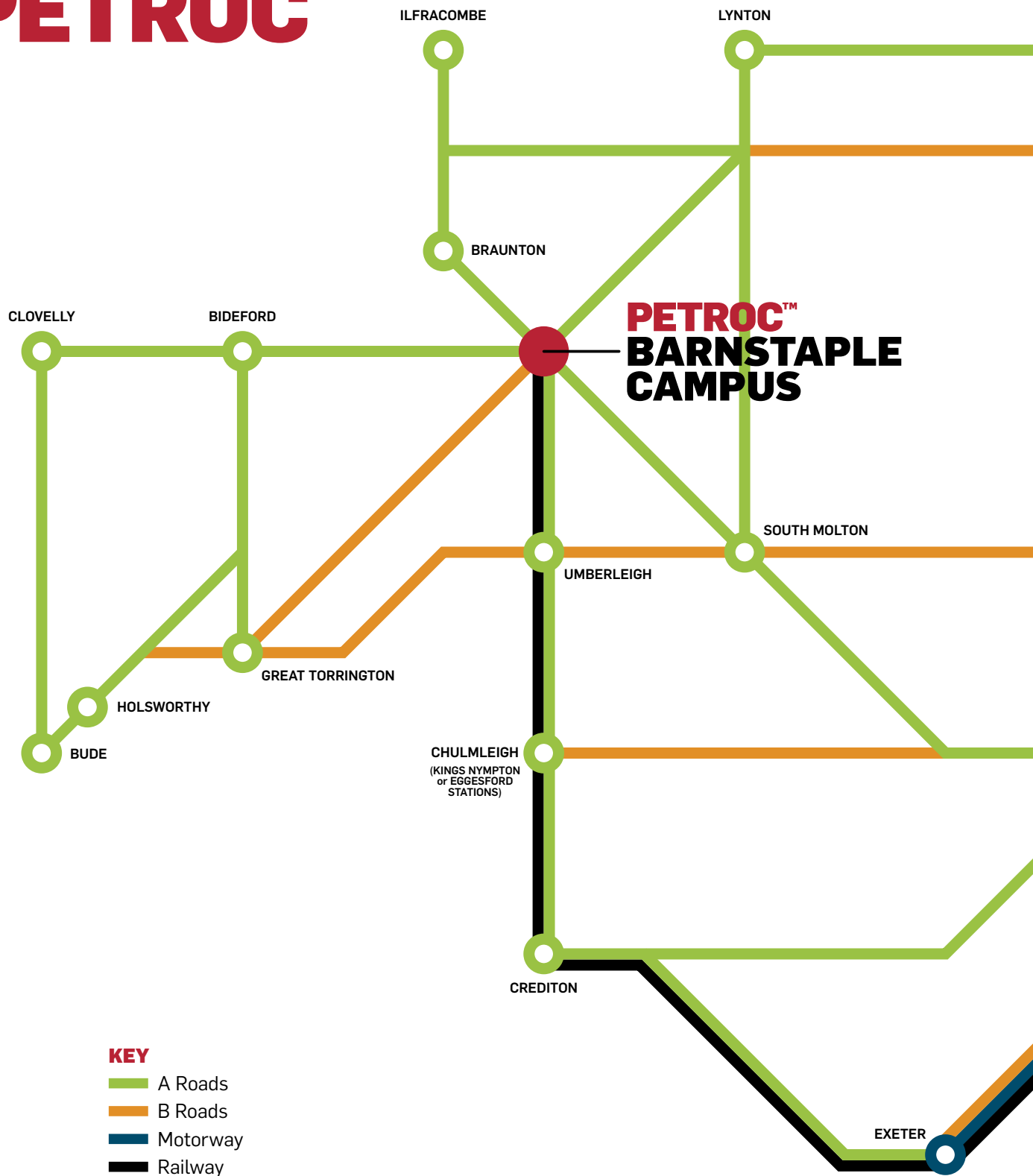
We don't expect anyone to put up with disrespectful behaviour, whether it's bullying, littering or vandalism so we will deal with it efficiently and effectively.

We are really pleased that you will be joining us and hope that your time here is enjoyable and memorable.

For more details about equality and diversity, or information about the support available to all our learners, please contact The Guidance Centre, or visit [www.petroc.ac.uk](http://www.petroc.ac.uk).

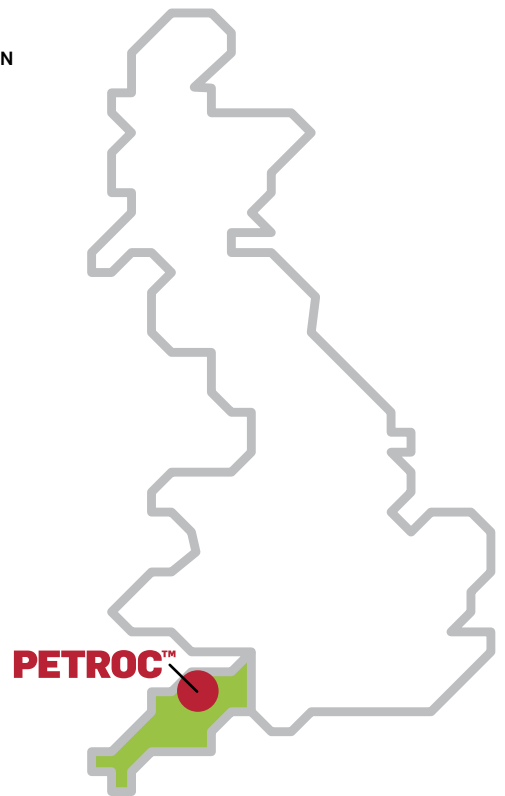


# FINDING PETROC™



**Tiverton Campus**

Bolham Road,  
Tiverton, Devon EX16 6SH  
01884 235330  
[www.petroc.ac.uk](http://www.petroc.ac.uk)



# CALL TYPE WRITE

Main college switchboard 01884 235200  
General enquiries and applications 01884 235330  
[postbox@petroc.ac.uk](mailto:postbox@petroc.ac.uk)

Petroc Tiverton Campus  
Bolham Road, Tiverton, Devon EX16 6SH

## **TERM DATES**

### **Autumn Term:**

5th September 2012 - 18th December 2012

Half Term: 26th October 2012 - 2nd November 2012

### **Spring Term:**

2nd January 2013 - 28th March 2013

Half Term: 18th February 2013 - 22nd February 2013

### **Summer Term:**

15th April 2013 - 5th July 2013

Half Term: 27th May 2013 - 31 May 2013

Please note that these dates are provisional and may be subject to change.

**THIS GUIDE IS  
AVAILABLE ONLINE AT  
WWW.PETROC.AC.UK  
AND IN OTHER FORMATS,  
ON REQUEST.**

**PLEASE CONTACT  
THE GUIDANCE CENTRE  
ON 01884 235330.**

## 2009/10 RESULTS

### National Diplomas

Subject	% Pass
Art & Design	100%
Children's Care, Learning & Development Level 3	100%
Graphic Design	100%
Health & Social Care	88.9%
Photography	100%
Sport	100%
Uniformed Public Services (Uniformed & Emergency Services)	100%
<b>National Diploma Average</b>	<b>98.6%</b>

### A Levels

Subject	% Pass
Biology	93%
Business Studies	100%
Chemistry	100%
Communication & Culture	100%
Critical Thinking	100%
Drama & Theatre Studies	100%
English Language & Literature	100%
Further Mathematics	67%
Geography	100%
History	100%
ICT	100%
Law	100%
Mathematics	86%
Media Studies	100%
Photography	100%
Physics	80%
Psychology	100%
Sociology	100%
<b>Overall Pass Rate</b>	<b>96.49%</b>

## COURSE INDEX

13 Supported Learning Programme

### LEVEL 1

17 Leap Learning Programme  
18 Bricklaying Diploma  
18 Carpentry & Joinery Diploma  
18 Community Link Tiverton Foundation Learning  
18 Creative Hair & Beauty Certificate  
19 Health & Social Care BTEC Diploma  
19 Hospitality & Catering NVQ Certificate  
19 Information & Communication Technology Foundation in Learning  
19 Motorcycle Maintenance & Repair Award  
19 Plastering Diploma  
21 Plumbing Level 1  
21 Skills For Life & Work Foundation Learning  
21 Sport, Active Leisure & Public Services BTEC  
21 Vehicle Maintenance & Repair Award

### LEVEL 2

24 Apprenticeships  
25 Apprenticeships  
26 Apprenticeships  
27 Art & Design BTEC Diploma  
27 Beauty Therapy Diploma  
27 Bricklaying Diploma  
27 Business With Retail & Admin BTEC Diploma  
28 Children's Care, Learning & Development BTEC Diploma  
28 Electrical Installation Performing Engineering Operations NVQ Diploma  
28 Exercise & Fitness CYQ Diploma  
29 Health & Social Care BTEC Extended Certificate/Diploma  
29 Hospitality & Catering VRQ Professional Diploma  
29 Information Technology BTEC Diploma  
31 Ladies Hairdressing Diploma  
31 Light Vehicle Maintenance and Repair Principles Diploma  
31 Maintenance Operations (Construction) Diploma  
33 Motorcycle Maintenance & Repair Principles Certificate  
33 Music BTEC Diploma  
33 Performing Arts BTEC Diploma  
33 Plastering Diploma  
34 Public Services BTEC Extended Certificate/Diploma  
34 Sport - Outdoor Adventure BTEC Extended Certificate/Diploma  
34 Supporting Teaching & Learning in Schools (Teaching Assistant) BTEC Extended Certificate/Diploma  
35 Wood Occupations - Bench Joinery Diploma  
35 Wood Occupations - Site Carpentry Diploma

### LEVEL 3 - A LEVELS AND DIPLOMAS

39 Architecture, Surveying & The Built Environment BTEC Subsidiary Diploma  
39 Art & Design (Unendorsed) A Level  
39 Biology A Level  
40 Business Studies A Level  
40 Chemistry A Level  
40 Communication & Cultural Studies AS Level  
41 Critical Thinking AS Level  
41 Drama & Theatre Studies A Level  
41 English Literature/Language A Level  
42 Environmental Studies A Level  
42 French A Level  
42 Geography A Level  
42 History A Level  
43 Information & Communication Technology (ICT) A Level  
43 Law A Level  
43 Mathematics A Level  
44 Mathematics (Further) A Level  
44 Photography A Level  
44 Physics A Level  
45 Psychology A Level  
45 Sociology A Level  
45 Sport (Performance & Excellence) Certificate/Subsidiary Diploma

### LEVEL 3 - DIPLOMA, VOCATIONAL AND ACCESS COURSES

49 Art & Design BTEC Extended Diploma  
49 Art & Design Diploma in Foundation Studies  
49 Beauty Therapy Diploma  
50 Beauty Therapy Diploma  
50 Bricklaying Diploma  
50 Business (Including Retail & Administration) BTEC Extended Diploma  
51 Children's Care, Learning & Development BTEC Extended Diploma  
51 Forensic Science BTEC Extended Diploma  
51 Hairdressing NVQ Diploma  
52 Health & Social Care BTEC Subsidiary/Extended Diploma  
52 IT (Business) BTEC Extended Diploma  
52 Light Vehicle Maintenance and Repair Principles Diploma  
52 Music Practice BTEC Extended Diploma  
53 Personal Training CYQ Certificate  
53 Public Services (Uniformed) BTEC Subsidiary/Extended Diploma  
53 Sport (Outdoor Adventure) BTEC Subsidiary/Extended Diploma  
55 Wood Occupations - Bench Joinery Diploma  
55 Wood Occupations - Site Carpentry Diploma  
57 Access to Higher Education

# WHAT A WAITING




# ARE YOU G FOR?



[www.petroc.ac.uk](http://www.petroc.ac.uk)

Created by the Marketing Team at Petroc  
Design & Print by Inventive Print Solutions Ltd. [www.inventiveprint.co.uk](http://www.inventiveprint.co.uk)

 Printed on paper sourced from sustainable forests using vegetable based inks.

All details correct at time of going to press (September 2011). E&OE. Petroc reserves the right to make changes, including the addition, withdrawal or restriction of qualifications as may be deemed necessary.

Bolham Road,  
Tiverton, Devon EX16 6SH  
01884 235330  
[www.petroc.ac.uk](http://www.petroc.ac.uk)

