

UNIVERSITY CENTRE
PETROC



UNIVERSITY OF
PLYMOUTH



your future starts here

UNIVERSITY-LEVEL
PROSPECTUS
2023/24



CONTENTS

WHY STUDY AT OUR UNIVERSITY CENTRE?	4
LEVELS AND QUALIFICATIONS	8
ENTRY REQUIREMENTS	8
HOW TO APPLY	9
YOUR GRADUATION	10
SUPPORTING YOU & YOUR LEARNING	12
PARTNERSHIP WITH THE UNIVERSITY OF PLYMOUTH	14
QUALIFICATIONS	16
NEW FOR 2023	23
BUSINESS AND MANAGEMENT	24
CONSERVATION & ENVIRONMENT	26
CONSTRUCTION	28
CREATIVE INDUSTRIES	30
DIGITAL & TECHNOLOGIES	32
EDUCATION & CHILDCARE	34
ENGINEERING & MANUFACTURING	36
HEALTH AND SOCIAL CARE	38
SCIENCE	40
SOCIAL SCIENCES	42

The college has reasonably endeavoured to ensure that all the information in this publication is correct at the time of printing, but courses are regularly reviewed and updated so details may change. Occasionally, a course listed in this publication may be replaced or withdrawn - check our website at **petroc.ac.uk** for the latest information. The website contains the most up-to-date information regarding the courses available, but in the event of any conflicts between the information on the website and in this publication, the website shall prevail. Accordingly, you should review the website whenever you are considering this publication. This publication can be made available in other formats or in languages other than English. Please contact our Advice & Guidance Centre on **01271 852422**.

WELCOME TO OUR UNIVERSITY CENTRE

We are so pleased you are considering degree-level study with us. We are proud of our higher education students, past and present, who have used their achievements at Petroc as a stepping stone to successful careers locally, nationally and overseas.

Our University Centre is a vibrant learning community: we have the people, expertise, support and facilities you need to help you fulfil your ambitions in higher education.

We have been delivering degree-level courses for over 30 years, and provide a wide variety of programmes - from HNCs and foundation degrees to higher apprenticeships and honours degrees - in a host of subject areas ranging from animal conservation to psychological studies, art and contemporary craft to computing, health and social care to business. Whether you are looking to upskill or retrain, or are just interested in a particular subject area, there is a course for you!

Our students have gone on to work with companies and organisations across the country and further afield such as Giffgaff, Sky, Dyson, Polo Ralph Lauren, Torbay and South Devon NHS Foundation Trust, The New York Times, South West Water, The Washington Post, Royal Devon University Healthcare NHS Foundation Trust, Sainsburys, Bath Rugby, Goldcoast Media, University Hospitals Plymouth NHS Trust and Usborne Publishing Ltd.

We understand that studying at degree level involves a high level of commitment and there may be personal and professional circumstances that you need to consider, which is why we make sure we offer flexibility and support to all our students.

We encourage all University Centre students to participate in internships and work experience. We recognise the importance of work experience to provide you with relevant and up-to-date knowledge and skills in the workplace and to broaden your contacts and career network.

Studying at degree level is an adventure, a leap forward on your learning journey that will open doors, provide exciting career opportunities and pave the way for you to make an impact on all that you embark upon in the future.

We'd love for you to join our university community where you can fulfil your knowledge and skills aspirations, make lifelong friends with your fellow learners, and make new workplace connections for your future career.

We look forward to welcoming you.



Sean Mackney, Principal and CEO

For more information, please visit our website petroc.ac.uk or contact our Advice & Guidance Centre:

North Devon: 01271 852422 | guidancecentre@petroc.ac.uk

Tiverton: 01884 235330 | guidancecentretiverton@petroc.ac.uk

WHY STUDY AT OUR UNIVERSITY CENTRE?

Studying for a degree is a great pathway for your future. Whether you are at the start of your career journey or looking to take on a new challenge, there are so many reasons why our University Centre is the perfect place to study.

By studying locally, you have access to academic experts, excellent links to business and industry, and opportunities for educational visits, without the expense of accommodation costs associated with studying further afield.

QUALITY COURSES AND OUTSTANDING RESULTS

Our Centre provides respected and high quality university validated degree-level courses. Many of these are delivered in partnership with the University of Plymouth.

Our wide range of degree subjects are delivered alongside core modules which will support you in developing your academic and employment skills. To ensure we provide the skills needed for local industry, we continually develop our range of programmes in line with business demands.



In 2022

84% of all students on our honours degree programmes gained a First or 2:1

SUPPORTIVE ENVIRONMENT

We provide a highly supportive learning environment with small class sizes, extensive student support and dedicated academics who will inspire, challenge and support you to help you achieve the highest grades.

Our friendly and approachable staff work with students to create a vibrant learning community, and every student is assigned an Academic Skills Advisor who will be on-hand to assist you throughout your studies.

Our timetabling aims to be flexible so you can fit your studies around your work and home life, making your learning journey as simple as possible so that you can completely focus on achieving your education goals.



In 2020, median graduate salaries were

£10,000 HIGHER in England than non-graduate salaries¹

¹ Universities UK

EMPLOYABILITY AND CAREERS

As a graduate, you are more likely to have better employability and career opportunities, your earning potential will increase, and you will experience many exciting opportunities that will support your personal growth and development.

We develop our programmes with employers and representatives from industry to ensure they provide the skills and experience required to secure a role in your chosen profession.

What's more, when you study at our University Centre, you will have access to a range of initiatives to support you on your career path which includes us paying you a bursary to get graduate-level work experience, investing in you to start your own business, as well as providing support for new business ideas, careers and employability advice.

FUNDING OPPORTUNITIES

We have a range of bursaries available to support students who are care leavers, from low income families and/or mature part-time learners. We also offer a hardship fund which can support students who need help in financial emergencies.

Please talk to our Advice & Guidance Centre or visit our website for more information.



FIND OUT MORE ONLINE
petroc.ac.uk

EXCELLENT FACILITIES

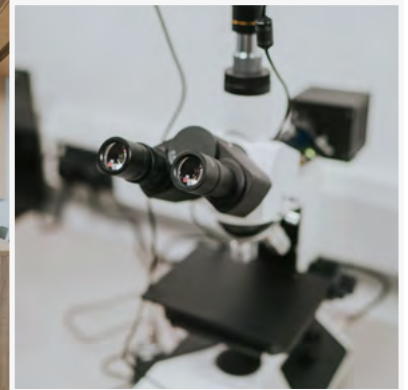
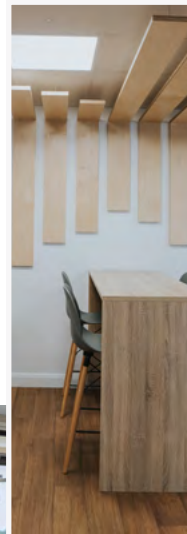
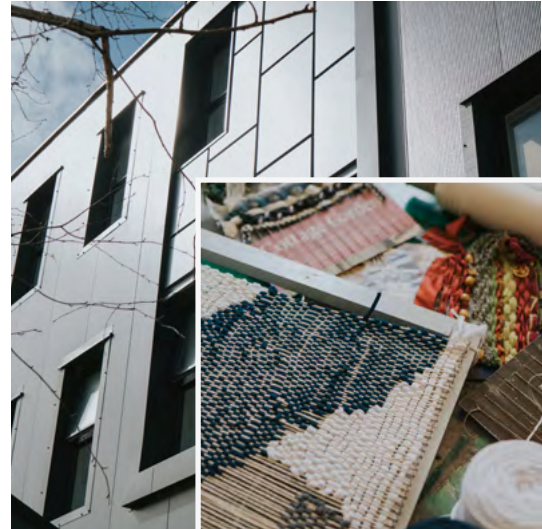
Our University Centre operates across three campuses in North and Mid Devon, with modern and stimulating learning environments. We're proud to say that our teaching spaces and workshops are some of the best in the region.

At our North Devon campus, students are based within the new South West Institute of Technology (SWIoT).

The SWIoT centre also houses our Engineering facility, with clean room fabrication capabilities; electronics design, manufacture and testing laboratories; and additive technologies (3D); as well as our Digital Science suite which contains a bespoke area for developing virtual environments; a large space for drone experimentation; and the latest specification networking, software, and data engineering facilities.

We also have a Clinical Simulation Suite for our Health and Social Care students; exceptional spaces for our creative art students, including spacious studios, editing suites and dark rooms; and of course, the unique natural environment we have on our doorstep for those on our conservation programmes.

Our study spaces incorporate important quiet areas where you can work in groups, and you can also enjoy one of our cafés and social spaces for revision, meeting friends or planning group assignments.



SOUTH WEST									
I	N	S	T	I	T	U	T	E	OF
T	E	C	H	N	O	L	O	G	Y

Degree students have access to a virtual learning environment called Moodle and we use a range of online learning and study resources for all programmes.

Where possible our teaching is conducted face-to-face and on campus, but we also have digital facilities to deliver teaching online through live and recorded sessions. Some of our courses use a hybrid model which includes a mix of face-to-face seminars, fieldwork and online teaching.

You can use your own device or college computers for your study and assignments, and you can also hire out a range of media equipment including books, journals, headphones, iPads, Chromebooks, cameras, and tripods. If you are studying a University of Plymouth approved course, you will also have access to their online resources and digital library, and automatic membership of their Students' Union (as well as social activities organised for students across the campuses).

For a closer look at our campuses and facilities, take a look at the 360° virtual tours at petroc.ac.uk/campus-tours.

FIND OUT MORE ONLINE
petroc.ac.uk



LEVELS AND QUALIFICATIONS

The table below shows the qualifications and levels available at our University Centre.

LEVEL 6	Undergraduate Honours Degree (Top Up) (BA (Hons)/BSc (Hons))				Degree Apprenticeship	Higher Apprenticeship
LEVEL 5	Foundation Degree (FdA, FdSc, FdEng)	Higher National Diploma (HND)				
LEVEL 4		Higher National Certificate (HNC)	Certificate in Education (CertEd)			
LEVEL 3	Access to Higher Education Diplomas	A Levels	T Levels	BTEC/NVQ	Apprenticeships	Foundation Diploma in Art

For a detailed explanation of qualifications and levels visit petroc.ac.uk/levels-explained.

ENTRY REQUIREMENTS

Every course will have its own specific entry requirements. We usually request 48 UCAS points for our degree-level programmes, however, other skills, training and relevant employment experience may be taken into account. Please take a look at your chosen course on our website for more details.

We invite all prospective students to have an interview with us so we can talk through study options with you individually. If any additional preparation is required in advance of starting your course, our Academic Skills Advisor will support you to ensure you get the best start.

HOW TO APPLY

HONOURS DEGREES, FOUNDATION DEGREES, HNCs AND HNDs

If you are applying for a course at the University Centre at Petroc, you can do so directly through our website, **petroc.ac.uk**.

If you are applying to more than one higher education institution, you will need to apply through UCAS at **ucas.co.uk**. You will need to enter the institution code name 'PETRO', institution code 'P51' and the course code (as listed in this guide).

NB: You will see two codes listed under each course on our website. The first code (beginning HEB or HET) is the Petroc course code; the second code is the code you must use for applications via UCAS.

ACCESS TO HE DIPLOMAS, PROFESSIONAL QUALIFICATIONS AND APPRENTICESHIPS

If you are applying for any of these courses, please do so via the Petroc website at **petroc.ac.uk**.

FIND OUT MORE ONLINE
petroc.ac.uk



FEES AND LOANS

We know that money can sometimes be a worry when studying for a degree, but the good news is that you may be eligible for a Tuition Fee Loan and/or a Maintenance Loan.

Tuition Fee Loans are available through Student Finance England. This loan is paid directly to Petroc.

Maintenance Loans are provided by the Government and can help you with living costs (e.g. rent, bills, food and nights out etc.). The loan is paid directly into your bank account at the start of each term. Currently, Maintenance Loans are only available for full-time courses. You won't have to start repaying your loan until you earn at least £27,295 per year.*

To find out if you are eligible for a loan, and to apply, visit [gov.uk](https://www.gov.uk).

YOUR GRADUATION

On completion of your course, you will be invited to your Graduation Ceremony, which usually takes place each October or November.

You will have worked hard for your degree and this is the perfect opportunity to celebrate your fantastic achievements with family and friends!

"Graduation is the highlight of the year for me. This magnificent event brings together students, their families, lecturers, employers and other supporters of degree-level education in Devon. It marks the culmination of the efforts of the students, staff and other supporters in developing and delivering high quality awards, the outcome of which helps to develop individual career prospects, enhance the performance of organisations and develop the region's economy.

DR CAROLINE CHIPPERFIELD
DIRECTOR FOR HIGHER EDUCATION, UNIVERSITY CENTRE



* Correct at time of printing; please check current arrangements.



FIND OUT MORE ONLINE
petroc.ac.uk

SUPPORTING YOU & YOUR LEARNING

Starting a university-level course is an exciting experience, although it can be daunting for some people. But rest assured, we are committed to providing you with the support you need to help you succeed - whether that's offering financial guidance or helping you source materials for your studies.

ACCESSIBILITY

We're here to help make your life easier so that you can focus on learning and developing. Our campuses are accessible for wheelchair users with ramps and lifts situated throughout the college. We also have fixed and portable loop systems available to assist those who wear a hearing aid and we can supply written materials in different formats.

ADDITIONAL NEEDS

We want to ensure that you have the support that you need to complete your course. When you apply for your course, please ensure you highlight any medical or learning needs so that we can ensure you are made aware of the most appropriate support options available. If you have a diagnosed learning need or need support with your mental health, you may be eligible for Disabled Student Allowance (DSA). Petroc's Additional Learning Support Team can help you with an application for DSA - please contact asl@petroc.ac.uk for more information.

BOOK DELIVERY SERVICE

There is a book delivery service between the campuses in Barnstaple and Tiverton, enabling access to print resources wherever you are based. You are also able to order books from the University of Plymouth through our Library Services.

ENRICHMENT

When you join Petroc, you can access an array of activities and groups where you can develop your interests and meet like-minded people. This includes discussion groups, sports clubs, volunteering opportunities and 'Universi-tea & Network' where you can meet other undergraduates for peer support during your course.

EQUALITY AND DIVERSITY

We are an open and inclusive college that values diversity and prides ourselves on our zero tolerance towards discrimination of any kind. As a student, you will have the opportunity to further explore and celebrate equality and diversity through your study programme and enrichment activities.

IT SUPPORT

Our dedicated Learning Technologies & Library Services Team are on-hand to help with a range of practical support including computer software and hardware, printing and photocopying, and using Harvard referencing.

Chromebooks and various recording devices are available for loan and most items can be renewed and reserved online. All study areas have WiFi access, so you can connect your own devices.

RESOURCES

Along with the University of Plymouth, we provide a wide range of information resources to support your use of relevant and reliable information in your studies. This information is available in a range of formats, including books, e-books, e-resources, and subject-specific journals.

SAFEGUARDING

We take the welfare of all learners and staff very seriously and have a dedicated Safeguarding Team that responds to any concerns raised. For further information please refer to our website.

STUDENT UNION

Our students are at the heart of everything we do. When you join Petroc, you automatically become a member of the Petroc Student Union (PSU) which is run by a committee of elected students with the sole aim of supporting fellow students with all aspects of college life. As a member of the PSU, you are also entitled to certain student discounts and benefits including those gained through the TOTUM card. If you are studying a University of Plymouth approved programme you also have access to the University of Plymouth Students' Union (UPSU) and activities.

SUSTAINABILITY

Petroc is passionate about sustainability and is committed to tackling the climate emergency through our connections to employers and communities across the region. We are signed up to support the UN Sustainable Development Goals and have been awarded the Planet Mark certification for recognising our commitment to continuous improvement in sustainability.

TRANSPORT

If you plan to travel to campus by bus, it is possible to purchase a bus pass through the college; just visit the website for more information and to apply. If you plan to drive to campus, you can apply for an annual parking permit.

WORKSHOPS

All University Centre students are given a series of specialist workshops designed to help you succeed in your chosen subjects. These workshops are embedded within your timetable and include topics such as research skills, referencing, and plagiarism awareness. A dedicated Google Classroom and website will be provided to support you throughout your programme of study.

PARTNERSHIP WITH THE UNIVERSITY OF PLYMOUTH



The University of Plymouth is renowned for high quality, internationally-leading education, research and innovation.

With a mission to Advance Knowledge and Transform Lives, Plymouth is a world-class research university and continues to drive the global debate in disciplines including marine and maritime, sustainability, health technologies and climate action. A three-time winner of the Queen's Anniversary Prize for Higher and Further Education, most recently in respect of its pioneering research on microplastics pollution in the ocean, the University continues to grow in stature and reputation.

The University has a strong track record for teaching and learning excellence, and has one of the highest numbers of National Teaching Fellows of any UK university. With over 18,500 students, a further 7,500 studying for a Plymouth degree at partner institutions in the UK and around the world, and over 145,000 alumni pursuing their chosen careers globally, it has a growing global presence.

As a partner college student, you can access online University services, use its library, electronic resources and learning support materials through its web-based student portal (including the Careers Service online information [myCareer]). You can link in with the Students' Union (UPSU) and access sports clubs, societies, the advice service, volunteering opportunities, student representation and University sports facilities. Together with the services and support from Petroc, you will have the benefits of a large university with all the advantages of being taught in a smaller community atmosphere.

FOR FURTHER INFORMATION:

T: 01752 585858

W: plymouth.ac.uk



DEGREE-LEVEL PROGRAMMES 2023/4

FIND OUT MORE ONLINE
petroc.ac.uk

ACCESS TO HIGHER EDUCATION

Health Professions
Humanities, Education & Social Work
Sciences

FOUNDATION DEGREES

Animal Conservation
Art and Contemporary Craft
Business
Computing
Early Childhood Studies
Electronics and Communications
Health and Social Care
Healthcare Assistant Practitioner
Human Biosciences
Illustration
NEW* Software Engineering
Teaching and Learning
Psychological Studies
Sustainable Environment Management
Sustainable Tourism Management

HONOURS DEGREE TOP UP

Professional Development (Business & Management)
Professional Development (Childhood Studies)
Professional Development (Creative Industries)
Professional Development (Health and Social Care)
Human Behavioural Studies
Integrated Technologies Engineering

HIGHER/DEGREE APPRENTICESHIPS

NEW* Construction Design and Build Technician
Engineering Manufacturing Technician
Healthcare Assistant Practitioner
Learning and Skills Teacher
Network Engineer
NEW* Software Developer
Technician Scientist

HNC

NEW* Community Coaching (Sport)
Construction
Electronics
Engineering

HND

NEW* Architectural Technology
Creative Media Production

PROFESSIONAL QUALIFICATIONS

Certificate in Education



*See page 23 for more details

QUALIFICATIONS

At Petroc, we offer a wide range of qualifications that match your starting point to higher education. The following pages will explain in more detail the opportunities available to you.

FIND OUT MORE ONLINE
petroc.ac.uk

ACCESS TO HIGHER EDUCATION DIPLOMAS

Access to Higher Education Diplomas (Access to HE) are specifically designed for learners aged 19 or over, who wish to take a university-level course but don't have the normal entrance requirements for direct entry onto degree-level courses. These qualifications are recognised by universities and other higher education institutions as an alternative to the standard A Level/BTEC entry.

There are many reasons why studying an Access to HE diploma may suit you; you may be a student who has completed some qualifications and can show the right level of skill and maturity for this programme, or you may be a mature applicant who has not studied A Levels but possesses a wealth of experience in your chosen field.



OVER 93% pass rate
for our Access to Higher
Education learners in 2022

Our Access to HE Diplomas are available to study either full-time over one year (three days a week in college), and/or part-time over two years, offering you greater flexibility and the opportunity to balance your home and work life.

Year after year, students who complete an Access to HE course go on to secure places at our own University Centre or other universities across the South West and beyond.



FUNDING FOR ACCESS TO HE DIPLOMAS

If you are aged 19 years or over, you may be eligible for an Advanced Learner Loan. If you take out the Advanced Learner Loan, you do not need to pay any fees upfront. If you complete your Access Diploma and then go on to complete a course in higher education, the remaining balance of your Advanced Learner Loan, including any interest on it, will be written off.

Find out more from Student Finance England, or our Advice & Guidance Centre.

For more information about qualifications, please visit our website petroc.ac.uk/degree or contact our Advice & Guidance Centre:

North Devon: 01271 852422 | guidancecentre@petroc.ac.uk

Tiverton: 01884 235330 | guidancecentretiverton@petroc.ac.uk

Please note: Some courses have specific entry requirements; these will be discussed at interview where relevant.

FOUNDATION DEGREES

Our FdA (Foundation Degree in Arts) and FdSc (Foundation Degree in Sciences) are approved by the University of Plymouth, and are equivalent to studying for the first two years of an honours degree. They have been created in collaboration with employers and offer you the opportunity to combine academic study with the skills and attributes needed in the workplace.

Most of our foundation degrees are available to study full-time over two years, or part-time over three years, offering you greater flexibility and the opportunity to balance your home and work life.

Our foundation degree courses are designed with built-in progression routes to honours degrees at our University Centre, the University of Plymouth or other HE institutions - enabling you to further develop your skills and knowledge.



FUNDING FOR FOUNDATION DEGREES

You may be eligible for a Tuition Fee Loan through Student Finance England.

This loan is paid directly to Petroc and you don't have to start repaying it until you earn at least £27,295 per year.

Find out more from Student Finance England, or our Advice & Guidance Centre.



FIND OUT MORE ONLINE
petroc.ac.uk

HONOURS DEGREES

Our BA (Bachelor of Arts) and BSc (Bachelor of Science) honours degree programmes are awarded by the University of Plymouth.

Successfully completing an honours degree will demonstrate to prospective employers a higher capacity for independent learning and research, along with enhanced problem-solving, critical thinking and communication skills. If you hope to progress to further studies, the degree will prepare you for higher-degree study at master's and PhD level. Many of our graduates have gone on to postgraduate study, to qualify as teachers and social workers, develop their own businesses or progress in their roles as graduate employees.

Most of our 'top up' honours degrees are available to study full-time over one year, or part-time over two years, offering you greater flexibility and the opportunity to balance your home and work life.



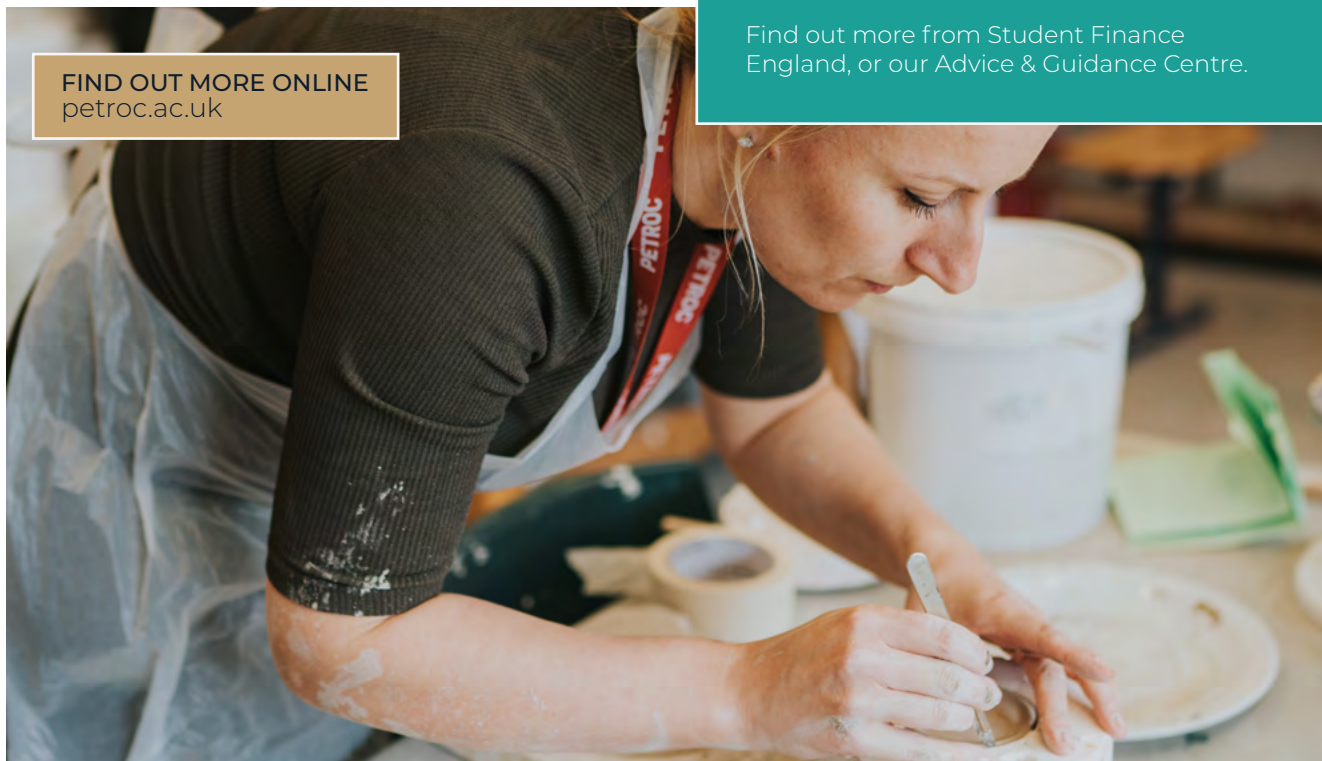
FUNDING FOR HONOURS DEGREES

You may be eligible for a Tuition Fee Loan through Student Finance England.

This loan is paid directly to Petroc and you don't have to start repaying it until you earn at least £27,295 per year.

Find out more from Student Finance England, or our Advice & Guidance Centre.

FIND OUT MORE ONLINE
petroc.ac.uk



HIGHER AND DEGREE APPRENTICESHIPS

An apprenticeship is a job with an accompanying skills development programme. Higher and degree apprenticeships have been developed by employers to enable businesses to train more of their employees in the high-level industry-specific skills that are critical for growth in the UK and internationally.

Apprenticeships can last for between 18 months and three years. They combine work with study and may include a work-based, academic or combined qualification relevant to the industry.

Higher and degree apprenticeships are available at our University Centre at Levels 4-6. Levels 4 and 5 are equivalent to a HNC/HND or a foundation degree, and Level 6 is equivalent to a bachelor's degree.



FUNDING FOR HIGHER AND DEGREE APPRENTICESHIPS

Your apprenticeship will usually be funded by your employer. If you would like to speak to someone about further funding options, please contact our Advice & Guidance Centre.

FIND OUT MORE ONLINE
petroc.ac.uk



HNC (HIGHER NATIONAL CERTIFICATE)

A Higher National Certificate (HNC) focuses on 'learning by doing' and teach you very specific skills relating to a particular job. It is a Level 4 qualification that is very highly regarded by employers both in the UK and overseas and can also count towards membership of professional bodies and other employer organisations.

Most of our HNCs are available to study full-time over one year, or part-time over two years, offering you greater flexibility and the opportunity to balance your home and work life.

Because HNCs are specifically designed to give you the skills for a particular field of work, they can lead straight to a career. You can also use the qualifications to progress within your current career to gain professional status.



FUNDING FOR HNCs

You may be eligible for a Tuition Fee Loan through Student Finance England.

This loan is paid directly to Petroc and you don't have to start repaying it until you earn at least £27,295 per year.

Find out more from Student Finance England, or our Advice & Guidance Centre.



FIND OUT MORE ONLINE
petroc.ac.uk

HND (HIGHER NATIONAL DIPLOMA)

Higher National Diploma (HNDs) focus on 'learning by doing' and teach you very specific skills relating to a particular job. These Level 5 qualifications are very highly regarded by employers both in the UK and overseas and can also count towards membership of professional bodies and other employer organisations.

Most of our HNDs are available to study full-time over two years, or part-time over three years, offering you greater flexibility and the opportunity to balance your home and work life.

Because HNDs are specifically designed to give you the skills for a particular field of work, they can lead straight to a career. You can also use the qualifications to progress within your current career to gain professional status.

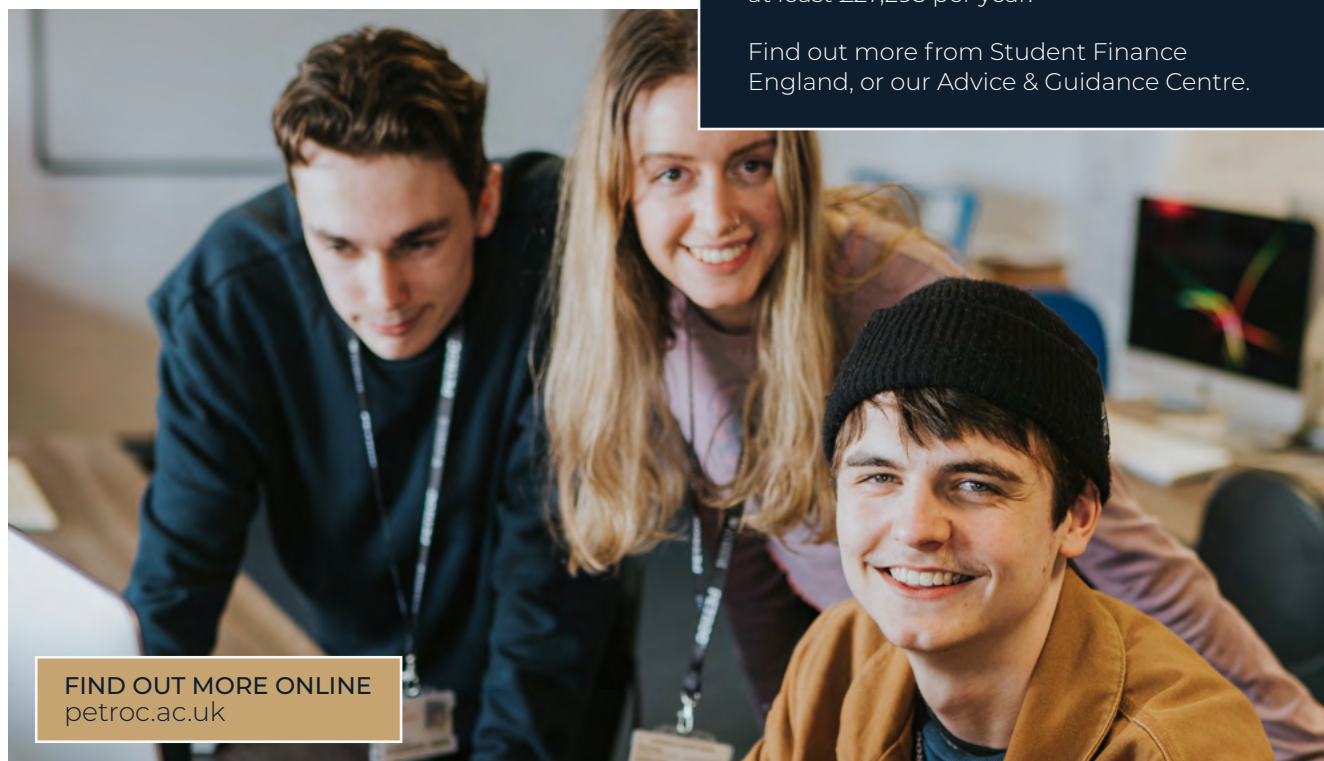


FUNDING FOR HIGHER AND DEGREE APPRENTICESHIPS

You may be eligible for a Tuition Fee Loan through Student Finance England.

This loan is paid directly to Petroc and you don't have to start repaying it until you earn at least £27,295 per year.

Find out more from Student Finance England, or our Advice & Guidance Centre.



FIND OUT MORE ONLINE
petroc.ac.uk

NEW FOR 2023

We are in the process of introducing the following programmes. Please check the website for updates and more information, or contact universitycentre@petroc.ac.uk.

- Foundation Degree Software Engineering (HTQ)*
- HND Architectural Technology (HTQ)
- HNC Community Coaching (Sport) (HTQ)
- Construction Design and Build Technician Apprenticeship
- Software Developer Apprenticeship

* Subject to approval by University of Plymouth



NEW! Higher Technical Qualifications (HTQs)

HTQs offer a high-quality route for students to develop the knowledge, skills and behaviours required for roles in demand from employers.

Approved by the Institute for Apprenticeships and Technical Education (IFATE), these qualifications are aimed at both college and school-leavers or those retraining and upskilling.

HTQs are based on the same employer developed occupational standards as apprenticeships but don't require employment as an apprentice.



BUSINESS AND MANAGEMENT



FIND OUT MORE ONLINE
petroc.ac.uk

The increasingly technological and professional base of the UK economy makes business and management skills highly sought after. In any commercial environment, a degree in business gives you a head start. The wide range of specialist subjects on offer, in addition to more general business topics, will develop your skills and knowledge to accelerate your business career.

The range of subjects enables you to develop your talents and forge your ideal career in business. If you have pre-existing knowledge, skills or interests, you can apply these to your study, while also having the opportunity to explore new topics and ideas.



"I can honestly say I have enjoyed every aspect of my course. I am fortunate to benefit from engaging lecturers who make each class exciting and impactful and have enjoyed studying alongside like-minded individuals whose opinions and knowledge base has helped me expand my own understanding.

ABYGAIL, BUSINESS STUDENT

Whether it's modern HR approaches, project management, enterprise or sustainability that piques your interest, our courses will help you discover the ever-changing business world.

Business and management study embeds transferable skills— so you can take your knowledge into any commercial field, from agriculture to accounting, and banking to broadcast media.

BUSINESS AND MANAGEMENT COURSES

Foundation Degree Business*	Full-time	North Devon
Foundation Degree Sustainable Tourism Management*	Full-time & Part-time	North Devon
BA (Hons) Professional Development (Business & Management)*	Part-time	North Devon



More business and administrative studies graduates than average were employed full time 15 months after graduation, compared with their peers in other subject areas.¹



The number of recent graduates choosing to start their own business, rather than become employees, has nearly doubled over the past 12 months.²

¹ Prospects ² Startups

*Approved by the University of Plymouth

CONSERVATION & ENVIRONMENT

FIND OUT MORE ONLINE
petroc.ac.uk



Our University Centre is the only higher education institution inside the North Devon UNESCO Biosphere Reserve.

Surrounded by dramatic coastlines and incorporating two national parks, the Lundy Marine Reserve and the South West Coast Path, it provides the opportunity for unrivalled experiential learning in which to explore the environmental challenges and solutions for the 21st Century and beyond.



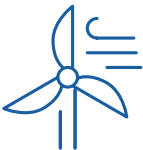
"I like studying at Petroc as it doesn't feel overwhelming, it's not a large faceless organisation and there's always help available.

ELIZABETH, ANIMAL CONSERVATION STUDENT

These fascinating programmes focus on vital conservation, biodiversity and environmental protection issues and enable you to play an active role in developing the local and national green economy, support the natural legacy of the region, develop innovative ideas and respond to the global climate emergency.

CONSERVATION & ENVIRONMENT COURSES

HNC Construction*	Part-time	North Devon
Foundation Degree Animal Conservation*	Full-time & Part-time	North Devon
Foundation Degree Sustainable Environment Management*	Full-time & Part-time	North Devon
Foundation Degree Sustainable Tourism Management*	Full-time & Part-time	North Devon



The average graduate salary for conservation jobs is **£37,500**.¹



The Net Zero Strategy, will support up to **190,000 jobs** in 2025, and up to 440,000 jobs in 2030, and leverage up to **£90 billion** of private investment by 2030.²

¹ Total Jobs ² UK Parliament

*Approved by the University of Plymouth

CONSTRUCTION

FIND OUT MORE ONLINE
petroc.ac.uk



Construction is an increasingly technical industry where the value of solid academic qualifications is ever more apparent - as is the need for qualified people. The shortage of skilled people in construction is now so acute, says RICS, that at least 200,000 more are needed just to meet the government's mid-2020s housebuilding target.

Petroc's HNC provides that foundation for careers in development, architectural services, quantity surveying, building surveying and construction project management.

The content is strongly vocational and the level of study undertaken is a demonstration of your academic capability. Many construction companies and chartered professions operate on contracts worldwide, increasing the opportunities for travel and wider professional development.

The course could be followed by higher academic study to HND or degree level, or could lead directly to employment in the industry locally or further afield.



The staff are the absolute highlight of the course, their passion and specialist knowledge is clearly evident in their teaching and really brings the subject to life.

RHIANNON, CONSTRUCTION STUDENT

CONSTRUCTION COURSES

HNC in Construction*	Part-time	North Devon
We are also looking to deliver HND Architectural Technology, and Construction Design and Build Technician Apprenticeship from September 2023. Please contact universitycentre@petroc.ac.uk for more information.		



The construction industry remains one of the UK's biggest exports, generating revenues of over **£120 billion** a year and employing **2.8 million** people.¹



Nearly **50,000** new homes were built in the first three months of 2021 – the highest figure in over 20 years.²

¹ Graduate Recruitment Bureau ² Gov UK

*Approved by the University of Plymouth

CREATIVE INDUSTRIES

FIND OUT MORE ONLINE
petroc.ac.uk



With their unique combination of imaginative thinking and creative development, few careers give more direct pleasure than creative subjects.. Whether you choose to follow an artistic career path or to use creative skills more broadly, there are many fulfilling opportunities within reach.

You can start your creative higher-level journey either through an Access to Higher Education Diploma in Art & Design, or a foundation degree in Art & Contemporary Craft or Illustration.

Creativity is central to innovation and performance in all kinds of businesses. The BA (Hons) Professional Development explores the application of creative thinking, methodologies, and processes to business, opening opportunities for careers in any commercial context.

All of our Creative Industry courses could lead to employment, self-employment, or further study.



"The facilities for the foundation degree were brilliant; a fantastic studio, access to computers and software, the content of the course, everything was brilliant."

JACQUELINE, CREATIVE INDUSTRIES STUDENT

CREATIVE INDUSTRY COURSES

HND Creative Media Production	Full-time	North Devon
Foundation Degree Art & Contemporary Craft*	Full-time & Part-time	North Devon
Foundation Degree Illustration*	Full-time & Part-time	North Devon
BA (Hons) Professional Development (Creative Industries)*	Part-time	North Devon



Overall, the global art market was valued at **65.1 BILLION** U.S. dollars in 2021.¹



Throughout 2021, cinemas across the UK sold approximately **74 MILLION TICKETS**.²

¹ UK Talent ² Statista

DIGITAL & TECHNOLOGIES

FIND OUT MORE ONLINE
petroc.ac.uk



SOUTH WEST

I	N	S	T	I	T	U	T	E	O	F
T	E	C	H	N	O	L	O	G	Y	

The computing faculty at Petroc offers higher-level study in either general computing or specific subject paths.

The UK technology sector is flying; at more than £10 billion in 2019, investment in UK companies accounted for a third of all the capital invested in tech across Europe. Opportunities abound for computing skills in every field, not limited to technology businesses, but including IT services and support.



This course is fantastic for giving you a wide range of skills and knowledge in the different areas of computing. The lecturers at Petroc were so helpful, it made my time studying there such a lovely experience. The campus is also lovely and not far from the town centre.

KAYLEIGH, DIGITAL AND TECHNOLOGIES STUDENT

Foundation degree courses comprise focused study that can either shortcut entry to employment or offer pathways to continue your education to honours degree. Higher apprenticeships are studied whilst in employment and are normally sponsored by the employer.

The range of subjects studied at Petroc could launch you into a career in embedded systems design, computer gaming, software development or networking.

DIGITAL & TECHNOLOGIES COURSES

HND Creative Media Production	Full-time	North Devon
HNC Electronics*	Full-time & Part-time	North Devon
Foundation Degree Computing*	Full-time & Part-time	North Devon
Foundation Degree Electronics & Communications*	Full-time & Part-time	North Devon
Network Engineer Higher Apprenticeship	Part-time	North Devon

We are also looking to deliver the Foundation Degree Software Engineering from September 2023. Please contact universitycentre@petroc.ac.uk for more information.



The value of the UK video games market continued to grow in 2021, reaching a record high of **£7.16 BILLION** - an increase of **2% ON 2020**¹

¹ BBC News

*Approved by the University of Plymouth

EDUCATION & CHILDCARE



Education & Childcare students at Abbotsham Cliffs making art from nature and learning the Swedish philosophy of 'friluftsliv'.

FIND OUT MORE ONLINE
petroc.ac.uk

The early years are among the most significant in every life and it's often thought a privilege to be involved in shaping them. A wide range of academic and practical teaching courses at Petroc offer opportunities to pursue inspiring careers in education and childhood development more broadly.

The faculty offers entry level, certificate courses and Access to Higher Education Diplomas in teaching and early years development. As a starting point, they open possibilities in education and lead naturally on to one of two foundation degrees and a BA (Hons) degree.



"The course gave me a deeper understanding of educational practice alongside how to become a reflective professional, which is a key part of teaching. Studying at Petroc also meant that I could complete a degree around my children and home life."

DAWN, EDUCATION & CHILDCARE STUDENT

Studying childhood and learning could set you on a path toward teaching at any level, further research, or social care and related occupations.

Generous openings exist throughout education as government recruitment targets continue to be missed by as much as 15% overall. The rewards of careers in these areas are well beyond the monetary, giving a generous payback in personal and professional development.

CERTIFICATE IN EDUCATION: The Certificate in Education is the main professional qualification for teachers who require the necessary knowledge and skills for a teaching career. This qualification is delivered over two years on a part-time basis in partnership with the University of Plymouth.

EDUCATION & CHILDCARE COURSES

Certificate in Education (incorporating the Diploma in Education and Training)*	Part-time	North Devon
Foundation Degree Early Childhood Studies*	Full-time & Part-time	North Devon
Foundation Degree Teaching & Learning*	Full-time & Part-time	North Devon
BA (Honours) Professional Development (Childhood Studies)*	Full-time & Part-time	North Devon
Learning and Skills Teacher Higher Apprenticeship	Part-time	North Devon



There are currently **624,520** full-time teachers in the UK.¹

¹ Besa

*Approved by the University of Plymouth

ENGINEERING & MANUFACTURING

ENGINEER
noun, [en-jin-ee-er]
Someone who does precision
guesswork based on unreliable
data provided by those of
questionable knowledge.
See also wizard, magician

SOUTH WEST
I N S T I T U T E O F
T E C H N O L O G Y

FIND OUT MORE ONLINE
petroc.ac.uk

The fourth industrial revolution is underway, bringing huge change to manufacturing and production. Engineers who develop their knowledge of emerging technologies will continue to be an in-demand resource worldwide.

You can begin your career in mechanical or electronic engineering either through the HNC programme, an apprenticeship, or foundation degree. We also offer a one-year 'top up' BSc (Hons) degree in Integrated Technologies following successful completion of the foundation degree.

Specific courses offer specialisation in production and manufacturing, communications and integrated technologies.

All our engineering courses offer opportunities for progression to further study, in some cases at Petroc, or at other universities. Our connections to employers within the region could also offer possibilities for internships, work experience, or employment.



The average graduate salary for General Engineering is **£28,649**.¹



"Petroc enabled me to combine my work and study, without the need to move away.

DAVID, ENGINEERING AND MANUFACTURING STUDENT

ENGINEERING & MANUFACTURING COURSES

HNC Electronics*	Full-time & Part-time	North Devon
HNC Engineering*	Full-time & Part-time	North Devon
Foundation Degree Production & Manufacture Engineering*	Full-time & Part-time	North Devon
BSc (Hons) Integrated Technologies Engineering*	Full-time & Part-time	North Devon
Engineering Manufacturing Technician Higher Apprenticeship	Part-time	North Devon



5.5 MILLION people work in engineering in the UK, accounting for **18%** of all UK employment.²

¹ Save the Student ² Prospects

*Approved by the University of Plymouth

HEALTH AND SOCIAL CARE



FIND OUT MORE ONLINE
petroc.ac.uk

Recent times have laid bare our reliance on a committed, at times heroic, but always overstretched body of health and social care professionals. Demand for expertise in all areas of health and wellbeing is high and in an ageing society, is only likely to increase.

This original vocation offers many routes toward the practise and management of social care, nursing, and medicine.

Access courses introduce social work and nursing concepts, and apprenticeships explore the subject in greater depth while working - offering a route toward practice management.

Foundation degrees and BSc (Hons) degree programmes offer opportunities to qualify in health and social care.



The content is so varied keeping you engaged, the support from the lecturers far exceeds expectations and the extended support is available for all who want to access.

NIKKI, HEALTH AND SOCIAL CARE STUDENT

HEALTH AND SOCIAL CARE COURSES

Access To HE Diploma: Health Professions	Full-time & Part-time	North Devon & Tiverton
Access to HE Diploma: Humanities, Education & Social Work	Full-time & Part-time	North Devon & Tiverton
Foundation Degree Health & Social Care*	Full-time & Part-time	North Devon
Foundation Degree Healthcare Assistant Practitioner*	Full-time & Part-time	North Devon & Tiverton
BA (Hons) Professional Development (Health & Social Care)*	Full-time & Part-time	North Devon
Healthcare Assistant Practitioner Higher Apprenticeship	Full-time	North Devon Tiverton & Torbay



There were **105,000** social care vacancies at any one time during 2020-21.¹

¹ Skillsforcare *Approved by the University of Plymouth

SCIENCE



FIND OUT MORE ONLINE
petroc.ac.uk

The value of science-based careers has never been more obvious than in recent years. Beyond the pandemic, however, demand for STEM subject graduates is only going to increase as the UK Government commits to raise R&D investment to £22 billion by 2024. As wide a field as maths and science is, at Petroc it is focused on two areas: engineering and bioscience.



"I originally studied the Access to Higher Education: Nursing, Midwifery and Medical Science course at Petroc as I wanted to stay local to the area due to having a young child at the time. I then went on to study the Foundation Degree in Human Biosciences. Since leaving Petroc, I studied an additional third year of the course and graduated from the University of Plymouth. I am now currently studying a Master's Degree and am on placement working for the University Hospital in Plymouth.

CHAZ, HUMAN BIOSCIENCES STUDENT

Entry points include the access courses in science, leading on to foundation degree study; and, a technician apprenticeship, which will develop your skills and knowledge in a lab-based role.

The courses will cement maths and science disciplines and develop your knowledge in many directions, giving you a chance to discover the area of scientific study that most appeals to your talent and offers clear pathways for a future career.

SCIENCE COURSES

Access to Higher Education: Diploma in Sciences	Full-time	North Devon & Tiverton
Foundation Degree Human Biosciences*	Full-time	North Devon
Foundation Degree Psychological Studies*	Full-time & Part-time	North Devon & Tiverton
Technician Scientist Higher Apprenticeship	Part-time	North Devon



Forecasts suggest the UK will need **700,000** more skilled technicians in the next decade to meet employers' demands.¹



There are over **1.2 million** people employed in primary science-based roles in the UK, working in biosciences, chemical sciences and physical sciences.²

¹ Prospects ² Graduate Recruitment Bureau

*Approved by the University of Plymouth

SOCIAL SCIENCES

FIND OUT MORE ONLINE
petroc.ac.uk



Humanities and the social sciences are the traditional degree subjects where study gives you important skills in research, developing ideas, testing theories, and establishing proposals that have wide application in any career. Talented social science graduates are often to be found at the head of organisations, or in the boardrooms of business.

Our social science degree study can begin with a teaching diploma access course, or with a foundation degree in psychology. A BA (Hons) programme includes the psychology-leaning Human Behavioural Studies degree.

While teaching is an obvious career choice for some, social sciences degrees are a good basis for further academic study or for graduate recruitment and management training in any commercial sphere of your choosing. The CMI reports the strongest growth in UK employment is in the higher-level occupations such as managers, directors and professional occupations.



"I have loved working with the amazing lecturers and meeting new people. The lecturers who taught me were the highlight of my education at Petroc."

ABIGAIL, SOCIAL SCIENCES STUDENT

SOCIAL SCIENCE COURSES

Foundation Degree Psychological Studies*	Full-time & Part-time	North Devon & Tiverton
BA (Hons) Human Behavioural Studies*	Full-time & Part-time	North Devon



Employment of clinical, counselling, and school psychologists is projected to grow **14%** from 2016 to 2026, faster than the average for all occupations.¹



The average graduate salary for Trainee Clinical Psychologists starts at **£32,306**.²

¹ Career Planner

² Prospects

University Centre
Petroc
Old Sticklepath Hill
Barnstaple
Devon
EX31 2BQ



WORLD
LAND
TRUST™

www.carbonbalancedpaper.com
CBP008067



petroc.ac.uk/he
North Devon: 01271 852330
Tiverton: 01884 235269
universitycentre@petroc.ac.uk