

# PETROC

TIVERTON  
PROSPECTUS  
2024/25



your future starts here

# WELCOME TO PETROC



At Petroc Tiverton, we have created a campus and a curriculum in the heart of the beautiful Mid Devon countryside that offers quality further and higher education in a friendly, accessible, community-focused environment.

We have focused our courses on the skills and qualifications most needed within the area, giving learners at Petroc great opportunities to get good quality local jobs.

Whether you're a school-leaver searching for the right qualification for your future, or an adult learner looking to boost your skills or change careers, Petroc will support you every step of the way.

We believe in creating learning experiences that are tailored to your personal success, and our excellent facilities, exceptional support and

valuable connections with local employers will help you get the results you want.

At Petroc, you won't be just a number, you'll be part of our community - a community focused on helping you to achieve your goals no matter where your life and career aspirations take you.

You're in control of your future; we can help you shape it.



**Sean Mackney**  
Principal and CEO



## DISCOVER OUR COURSES

CONSTRUCTION	8
--------------	---

HEALTH & SOCIAL CARE	18
----------------------	----

FOUNDATION LEARNING	12
---------------------	----

PREPARING FOR ADULTHOOD	22
-------------------------	----



FIND OUT MORE ONLINE  
[petroc.ac.uk](http://petroc.ac.uk)

## WHY STUDY AT PETROC?

We know that education is so much more than classrooms and coursework. That's why our approach is to deliver Learning for Life: Enhancing and developing skills, opening up meaningful opportunities and setting you on the path to a valuable and exciting career.

Our Curriculum for the Community offers an innovative approach to learning. It identifies and promotes skills that will offer you a career path

that lasts - whilst actively contributing to the local economy.

We have forged partnerships with local businesses to create opportunities for students and graduates to build prosperity in the community. These vital connections help us to offer career pathways across a wide variety of sectors that are in demand in the local area - and beyond.

### FACULTY & TEACHING STAFF

Our dedicated teaching staff are all subject specialists with a wealth of skills and knowledge. They are passionate and committed to helping you develop the abilities and qualities needed for your future career. All are here to share their unique knowledge, know-how and industry

insights to inspire, challenge and support you.

At Petroc, we have worked hard to establish a supportive, caring and inclusive environment where you can flourish. Whether you require additional guidance and assistance with your studies or help with your personal wellbeing, our tutors will work with you to find the right support to enhance your learning.

### EMPLOYABILITY: SIGHTLINES TO CAREERS

When you undertake a further or higher education course with us, we ensure that you have the chance to undertake meaningful work placements that will give you valuable insight into employment and give you the relevant knowledge and life skills relating to your chosen

subjects, enabling you to move into a sustainable career or take a step up on the career ladder.

New perspectives gained during your placements will help you to put your classroom-based learning into practice, understand what it's really like to work in your chosen field and how to interact with colleagues and customers - whether that's in an office, workshop, laboratory or care home.

### DIGITAL EXPERTISE

At Petroc, we use a variety of learning platforms including Google Classroom, Moodle and Onefile and each course tailors their use of educational software to meet the specific needs of their students.

Using Google Workspace for Education, we have developed a digital curriculum that will offer

you the chance to acquire the communication, collaboration, creativity and critical-thinking skills required for success in our rapidly evolving, digital world.

Our online curriculum will allow you to learn in a variety of ways, including Extended Reality (AR, VR and MR), which can complement face-to-face experiences.

### EXCEPTIONAL FACILITIES

Our Tiverton campus boasts an enviable location, being close to the bustling town centre and just a stone's throw from the stunning Devon countryside.

The campus has recently undergone an extensive refurbishment, designed to create a comprehensive environment for work, study and leisure.

The Futures Hub building is home to our brand new Clinical Simulation Suite which provides true-to-life clinical environments, as well as a Fitness Centre filled with top-of-the-range equipment for cardio and weights.

The Digital Learning & Social Hub includes our high-tech virtual reality/augmented reality suite as well as learning pods, a library and areas for communal working.

Our Construction Hub incorporates industry-standard carpentry workshops and bricklaying and plastering stations full of high-spec tools and equipment.

Our Learner Success Hub, which is a dedicated space for learners with Special Educational Needs and Disabilities (SEND), is home to a teaching kitchen, cafe, therapy room, sensory garden, quiet rooms and independent living environments.

# QUALIFICATIONS AND LEVELS - MAKING THE RIGHT DECISION

There are a number of different qualifications available to you at Petroc. We're here to help you choose the route that is most suitable for your needs and future aspirations.

Our dedicated Advice & Guidance Team can talk you through the options available to you or you can find a detailed explanation of qualifications and levels at [petroc.ac.uk/which-course](http://petroc.ac.uk/which-course).

## Entry Level:



Entry Level courses give you access to Level 1 qualifications and employment. Qualifications include personalised outcomes to enable you to progress.

### Entry requirements:

For all learners joining Entry Level Study Programmes, there are no formal entry requirements; however, you will have a one-to-one interview to discuss your personal learning needs. You will also be required to study English and Maths at an appropriate level to suit your ability.

## Level 1:

Level 1 courses offer you the opportunity to acquire a broad range of knowledge and practical skills not taught in school to allow you to enter a trade or profession, such as carpentry and construction.

Completing a Level 1 qualification will give you access to Level 2 opportunities, apprenticeships and employment. This includes vocational qualifications and Functional Skills.

### Entry requirements:

You must hold **four GCSEs at Grade 2 or equivalent (or above)**, preferably including Maths and English.

If you do not have a GCSE Grade 4 in Maths and/or English, you'll continue studying these subjects alongside your chosen course/s.

At the end of the year, you are expected to have completed and achieved all the components of your Level 1 Study Programme and improved your Maths and English skills (where applicable) before progressing on to your next course.

## Level 2:

Level 2 qualifications will start to provide further focus on a subject that can support the transition to a Level 3 industry-relevant T Level, as well as other Level 3 qualifications, apprenticeships and employment.

Qualifications include GCSEs, vocational qualifications and apprenticeships.

### Entry requirements:

All entrants must hold **four GCSEs at Grade 3 or equivalent (or above)**, preferably including GCSE Maths and English. If you do not have a GCSE Grade 4 in Maths and/or English you will continue studying these subjects alongside your chosen course/s.

At the end of the year, you are expected to have completed and achieved all the components of your Level 2 Study Programme and improved your Maths and English skills before progressing to your next level course

## Level 3:

Level 3 qualifications will set you on a path to university, higher apprenticeships or meaningful employment.

Qualifications include T Levels, A Levels, vocational qualifications, advanced apprenticeships, and Access to Higher Education Diplomas.

### Entry requirements:

To be accepted onto a Level 3 programme, you must hold **at least five GCSEs at Grade 4 or above, including GCSE Maths and English Language.**

Certain subjects will require higher grade profiles - these are outlined in more detail on our website

## LEVELS 4-6 are university-level qualifications:

Petroc has been delivering a range of degree-level courses and qualifications for over 30 years. We provide a wide variety of degree-level programmes in subject areas ranging from education, computing, science, engineering, and health & social care.

### Level 4:

Foundation degree (Year 1), honours degree (Year 1), higher apprenticeship, degree apprenticeship, HNCs, HNDs, and professional qualifications.

### Level 5:

Foundation degree (Year 2), honours degree (Year 2), higher apprenticeship, degree apprenticeship, and professional qualifications.

### Level 6:

Honours degree (Final Year), and degree apprenticeship.



The entry requirements detailed are a guide. During the application process, we will ask you about your predicted grades and these will be used to offer you the most appropriate level course. If you then achieve a higher or lower grade we may adjust the level of your course accordingly to help you to attain your best result. Some courses require specific or additional grades – please see the individual course details for more information. As always, further information and help can be found on our website or you can contact our dedicated Advice & Guidance Team.



FURTHER COURSE OPPORTUNITIES  
AVAILABLE AT OUR NORTH DEVON CAMPUS



## SPECIALIST AREAS

At Petroc, we pride ourselves on providing inclusive, bespoke education opportunities tailored to the needs of our learners, with courses that reflect the business and industry needs of Tiverton and the surrounding areas.

Over the years, we have built and maintained strong relationships with a large number of businesses, organisations and charities in our community. These valuable partnerships have informed and shaped our learning environment and the education experience we offer at Petroc.



CONSTRUCTION

FOUNDATION LEARNING

HEALTH & SOCIAL CARE

PREPARATION FOR ADULTHOOD



We have a wide range of additional courses available at our North Devon campus in Barnstaple. Students from Tiverton High School, Uffculme School and Cullompton School who will be travelling more than three miles from home to study a Petroc course - either in Tiverton or Barnstaple - are eligible for a free Stagecoach SW Gold term-rider student bus pass.



FURTHER COURSE OPPORTUNITIES  
AVAILABLE AT OUR NORTH DEVON CAMPUS



POTENTIAL

DEVELOPMENT



MAXIMUM FOUR-DAY TIMETABLE  
FOR FULL-TIME LEARNERS

# CONSTRUCTION



*discover  
more!*

FIND OUT MORE ONLINE  
[petroc.ac.uk](http://petroc.ac.uk)



FURTHER COURSE OPPORTUNITIES  
AVAILABLE AT OUR NORTH DEVON CAMPUS



"Being an apprentice while studying has enabled me to learn from skilled tradesmen and women on-the-job, which has helped with my college learning. The tutors on my course were so helpful - they were there for me 24/7."

JAMES, CARPENTRY APPRENTICESHIP



## WHAT CAN I EXPECT?

The construction industry has experienced phenomenal growth in recent years and has evolved into an increasingly technical work environment, requiring a diverse range of skills and expertise.

From architecture, design, landscaping and town planning to bricklaying, carpentry and engineering, construction holds a wealth of career opportunities where you can make your mark.

Throughout your studies, you will develop important hands-on, technical and practical skills from our highly-skilled lecturers who have a wealth of industry experience. They will support and guide you throughout your learning journey and help you achieve the highest standards in your chosen area. On campus, we have a range of workshop spaces for each of our trade courses, all fully equipped with cutting-edge tools, machinery and environmental technology.

From creating your own successful business to working on ground-breaking projects for a multinational contractor, your future in construction starts here



The construction sector is one of the largest in the UK economy – employing **3.1 million** people or over 9% of the workforce<sup>1</sup>



The average salary for a Site Manager is **£52,500**<sup>2</sup>

<sup>1</sup> Gov.uk

<sup>2</sup> Totaljobs.com



## Future Careers...

Giving you the skills you need to succeed, whatever your ambition:

- Building Surveyor
- Construction Manager
- Quantity Surveyor
- Carpenter
- Bricklayer
- Construction Site Worker



## BRICKLAYING, CARPENTRY & JOINERY

Level 1 | Duration: 1 year

📍 Tiverton | FTT293

### Full-time

This introductory programme combines classroom theory and practical learning to provide a taster in a range of subject areas. You will learn core knowledge and specific skills that underpin each of these construction specialisms that will allow you to progress onto a higher level of study within your chosen specialism.

You will undertake an assortment of study components including core and specialist modules, a tutorial programme, and the opportunity to improve your GCSE maths and English. The course will also support you in developing your study skills.

You will study the following modules:

- Introduction to the construction industry
- Introduction to brick and block walling
- Introduction to carpentry and joinery
- Introduction to health and safety

### ENTRY REQUIREMENTS

You must hold four GCSEs at grade 2 or above, preferably including Maths and English Language.

### PROGRESSION

Upon successful completion of this course, you can progress onto one of our Level 2 construction courses or an apprenticeship pathway.

## CONSTRUCTION SKILLS

Level 2 | Duration: 1 year

📍 Tiverton | FTT311

### Full-time

This T Level Foundation Year Programme has been developed to help you gain the knowledge, skills and work experience needed to help you progress onto your chosen T Level.

You will expect to gain the following:

- Technical knowledge and practical skills
- Industry-based work experience
- Relevant English, maths and digital skills
- Focused individual support and personal development

This course encompasses the Certificate in Brickwork or Site Carpentry.

The programme will be delivered through a simulated real-life on-site project, erecting a full-size bungalow within the workshop area.

### ENTRY REQUIREMENTS

You must hold four GCSEs at grade 3 or above, preferably including Maths and English Language.

### PROGRESSION

Upon successful completion of this programme, you will be able to progress onto a Level 3 construction course or an apprenticeship.

## BRICKLAYER – APPRENTICESHIP

Level 2 | Duration: 1 year

📍 Tiverton | ATT124

### Part-time

Bricklayers lay bricks, blocks and other types of building components in mortar to construct and repair walls, foundations, partitions, arches and other structures. The range of sites and projects that bricklayers will work on include large commercial developments, new builds in housing, alterations, extensions and restorations.

During this apprenticeship, you will be required to learn the following skills:

- Preparation of materials
- Safe working
- Masonry structures
- Radial and battered brickwork
- Feature and reinforced brickwork
- Other brickwork
- Building technology

### ENTRY REQUIREMENTS

If you have not yet achieved Level 2 English and maths, you must achieve this prior to taking your end-point assessment.

### PROGRESSION

Upon completion of this apprenticeship, you could further develop your knowledge through a higher level apprenticeship.

## CARPENTRY APPRENTICESHIPS

We offer two apprenticeships relating to construction:

**Level 2 Carpentry and Joinery (Site Carpentry)** and **Level 3 Advanced Carpentry and Joinery (Site Carpentry)**.

Apprenticeships blend classroom learning with on-the-job training, meaning you can earn while you learn. You will usually spend four days in the workplace as a paid employee, with one day in the classroom where you will reinforce and further develop your skills and workplace learning.

During your apprenticeship, you will be expected to undertake a range of predefined knowledge, skills and behaviours which will relate to your chosen construction programme.

Depending on the level, an apprenticeship lasts between one and two years and can start at various points in the year.

### ENTRY REQUIREMENTS

Each apprenticeship will have its own specific entry requirements; you can find out more on our website.

### PROGRESSION

An apprenticeship is a great pathway to a rewarding and successful career, or can be a stepping stone to a higher-level programme.

You can find out more about our apprenticeships at [petroc.ac.uk/apprenticeships](https://petroc.ac.uk/apprenticeships)

If you aren't sure which sector you want to work in, or are unable to secure an apprenticeship, you may wish to undertake a Traineeship. For more information about Traineeships, contact our Advice & Guidance Centre.



# FOUNDATION LEARNING



FIND OUT MORE ONLINE  
[petroc.ac.uk](http://petroc.ac.uk)



"Aidan joined our Project Life course having already acquired and developed many skills during his Preparation for Adulthood and Skills for Life courses. Despite his physical challenges, Aidan strives to do well in all he does. He is very capable in the cafe, preparing, cooking and serving dishes, and inspires people around him.

Aiden was nominated, and won, the Tiverton Campus Student Award for his dedication and positivity, and we're delighted that he is planning on continuing his studies on our Supported Internship Programme next year."

ADRIAN BANNER, PROJECT LIFE LECTURER AND TUTOR



## WHAT CAN I EXPECT?

Our foundation learning programmes are aimed at individuals who may be unsure about what career pathway they want to follow.

Throughout your chosen course, our tutors will support and encourage you to develop both your personal and employability skills, building confidence and learning about which career path is right for you. You will be given the opportunity to access a variety of educational visits and group community-based activities, and at the end of your programme, you will be able to attend personalised celebrations of your achievements.

There are no entry requirements for our Foundation Learning programmes; however, you must be willing and able to learn and engage in a variety of vocational and personal development activities.



Gain **CONFIDENCE AND SKILLS** to enable progression to employment



Entry to higher level vocational study



*discover more!*

Aidan receiving his Outstanding Student Award



## ESOL (ENGLISH FOR SPEAKERS OF OTHER LANGUAGES)

Various  
Levels | Duration: 33 weeks

 Tiverton | PTT250

### Part-time

On this course, you can improve your confidence to communicate in English at work, in education and in your social life. You'll also meet new friends from all over the world in a relaxed atmosphere and gain a qualification at a level to suit you.

You will learn to study English speaking, listening, reading, writing, pronunciation and grammar through a range of activities including games, role-play, reading comprehension and vocabulary exercises and different styles of writing.

We run this course in a range of different levels to suit your needs and abilities: Pre-entry, Entry 1, Entry 2, Entry 3, Level 1 and Level 2 courses.

### ENTRY REQUIREMENTS

There are no entry requirements. An initial assessment will determine the correct level of class for you.

### PROGRESSION

Completion of this course will open up a wide range of further studies or employment opportunities.

## FUNCTIONAL SKILLS ENGLISH (ONLINE)

Level 1 | Duration: 30 weeks

 Tiverton | PTB623

### Part-time

This online independent study course is designed for anyone who wants to improve their English skills for either the workplace or further study.

You will cover a variety of topics designed to help you improve your understanding of different texts and improve your spelling, punctuation and grammar to enable you to write confidently and effectively in a range of situations such as emails, letters and reports.

You will also work on communication skills which are vital transferable skills for the workplace.

### ENTRY REQUIREMENTS

You will sit an initial assessment to check if this is the right level course for you.

### PROGRESSION

Gaining Functional Skills English Level 1 can open up further courses to you - including Level 2 English - as well as supporting you in progressing in the workplace.

## FUNCTIONAL SKILLS ENGLISH (ONLINE)

Level 2 | Duration: 30 weeks

 Tiverton | PTB622

### Part-time

This online independent study course is designed for anyone who wants to improve their English skills for either the workplace or further study.

You will cover a variety of topics designed to help you improve your understanding of different texts and improve your spelling, punctuation and grammar to enable you to write confidently and effectively in a range of situations such as emails, letters and reports.

You will also work on communication skills which are vital transferable skills for the workplace.

### ENTRY REQUIREMENTS

You will need a Level 1 English qualification or evidence of working at this level.

### PROGRESSION

Functional skills English Level 2 is a key qualification for employment, further and higher education.

## FUNCTIONAL SKILLS MATHS (ONLINE)

Level 1 | Duration: 30 weeks

 Tiverton | PTB620

### Part-time

This online independent study course covers skills that are needed in everyday life and working environments.

During the course, you will study the following topics:

- Addition, subtraction, multiplication and division
- Fractions
- Decimals
- Percentages
- Data analysis
- Measurement
- Probability

### ENTRY REQUIREMENTS

You will sit an initial assessment to check if this is the right level course for you.

### PROGRESSION

Gaining Functional Skills Maths Level 1 can open up further courses to you - including Level 2 Maths - as well as supporting you in progressing in the workplace.

## FUNCTIONAL SKILLS MATHS (ONLINE)

Level 2 | Duration: 30 weeks

 Tiverton | PTB619

### Part-time

This online independent study course covers the skills that are needed in everyday life and working environments.

During the course, you will study the following modules:

- Fractions
- Decimals
- Percentages
- Data analysis
- Measurement
- Probability

### ENTRY REQUIREMENTS

You will need a Level 1 Maths qualification or evidence of working at this level.

### PROGRESSION

Functional Skills Maths Level 2 is a key qualification for employment, further and higher education.

## PROJECT SEARCH (EXETER)

Level 1 | Duration: 10 weeks

 Tiverton | FTT305

### Full-time

Project SEARCH is a supported internship for people who want to get a job. It has been specifically created for students with an EHCP who have a learning disability or Autistic Spectrum Condition.

You will work solely at Royal Devon & Exeter Hospital to gain new employability skills with the ultimate goal of getting paid employment when you leave the project. The course runs at the hospital for five days a week and is supported by two full-time Project SEARCH staff as well as onsite mentors.

At the start of the course, you will undertake a three-week settling-in period, where you will receive all the training necessary to be safe and professional within the hospital grounds. You will then undertake three 10-week placements in the hospital, where you will be taking on a real role in the hospital.

### ENTRY REQUIREMENTS

You will need to have an EHCP and be under 24 years of age. You will also have a one-to-one interview to discuss your personal learning needs.

### PROGRESSION

Successful completion of this course may provide you with the opportunity to progress to a supported internship course, an apprenticeship or a higher level of study in a vocational area.

## SUPPORTED INTERNSHIP

Entry Level | Duration: 1 year

 Tiverton | FTT001

### Full-time

Supported Internships are for young people who want to move into employment and need extra support to do so. It is aimed at those with learning difficulties and/or disabilities, aged 16 to 24, with a Statement of Special Educational Needs, a My Plan, a Learning Difficulty Assessment, or an EHCP.

The structured study programme includes the following areas:

- On-the-job training with a local employer - supported by expert job coaches.
- Employability programme looking at the soft skills of employment.
- Vocational profiling to identify skills and qualities.
- Opportunity to study for relevant qualifications.

### ENTRY REQUIREMENTS

There are no formal entry requirements, however, you will have a one-to-one interview to discuss your personal learning needs.

### PROGRESSION

Successful completion of this course may provide you with the opportunity to progress to a supported internship course, an apprenticeship or a higher level of study in a vocational area.

## FOUNDATION YEAR

Entry Level | Duration: 1 year

 Tiverton | FTT307

### Full-time

This is a tailored programme designed to meet the educational and support needs of Pre-Entry and Entry Level learners.

It covers the four outcomes that young people with disabilities have said are important to them: Employment, Independent Living, Community Inclusion and Good Health.

The course will include the following elements:

- Nurturing the personal and day-to-day skills
- Developing the relevant skills needed for employment
- Work experience opportunities
- Opportunities to integrate with mainstream students
- Enrichment activities
- Educational visits and a residential trip

### ENTRY REQUIREMENTS

There are no formal entry requirements, however, you will have a one-to-one interview to discuss your personal learning needs.

### PROGRESSION

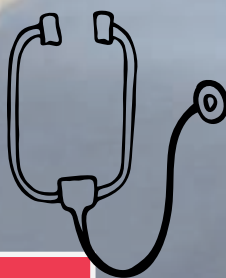
Upon completion of this course, you will be able to progress towards further education, employment, independent living and participation in the community.



MAXIMUM FOUR-DAY TIMETABLE  
FOR FULL-TIME LEARNERS



# HEALTH & SOCIAL CARE



*discover  
more!*



FURTHER COURSE OPPORTUNITIES  
AVAILABLE AT OUR NORTH DEVON CAMPUS

FIND OUT MORE ONLINE  
[petroc.ac.uk](http://petroc.ac.uk)



"I have really enjoyed learning about aspects of health and social care, alongside the practical elements of the course, such as taking blood pressures, pulses and temperatures."

ELLIE, HEALTH AND SOCIAL CARE



## WHAT CAN I EXPECT?

The health and care sector is one of the largest in the UK, providing support for people living with a range of different needs in a wide variety of settings and care environments. An in-demand and valuable career that includes everything from nursing to psychology, working in health and care is inspiring and hugely rewarding.

Whether your aspirations are to work close to home, or further afield, a health and care qualification at Petroc can help you find a career that makes a real difference in people's lives.

Alongside your essential knowledge base, you'll develop teamwork, communication, and research skills, helping you to liaise and work effectively with individuals, clients, parents and guardians and other care professionals.

Work experience placements are crucial in the health & social care sector and offer vital real-life learning opportunities to refine your abilities. You'll have the chance to experience working in settings including SEN schools, hospitals, hospices and nursing homes, looking at all aspects of health and social care work and exploring what works for you

At Petroc, our combination of academic study and practical, hands-on experience will develop and enhance your skills and give you the next step towards helping others.



The **NHS** is one of the largest employers in the world, and is the biggest in Europe, with over **1.3 million staff**.<sup>1</sup>



The average annual salary for a Occupational Therapist is **£35,996** <sup>2</sup>

<sup>1</sup> NHS

<sup>2</sup> Talent.com



## Future Careers...

Preparing you for roles that make a positive difference:

- Counsellor
- Care Manager
- Cognitive Behavioural Therapist
- Social Worker
- Youth Worker
- Community Development Worker



## HEALTH & SOCIAL CARE

Level 2 | Duration: 1 year

 Tiverton | FTT290

### Full-time

This health and social care study programme is designed to give you a thorough introduction to working in different health and social care settings, including children, vulnerable adults and older adults.

You will be taught the theory needed to understand how to meet the needs of different service users.

You will study the following modules:

- Communication: Forms and contexts of communication. How communication develops positive relationships.
- Equality, diversity and inclusion: How to treat service users fairly and in ways which are empowering.
- Human lifespan development: How individuals develop from birth to old age. Learning about physical, cognitive, emotional and social needs.
- Safeguarding and protection: How to keep service users safe from harm and abuse.

### ENTRY REQUIREMENTS


You must hold at least five GCSEs at grade 3 or above, including Maths and English Language.

### PROGRESSION

Upon successful completion of this course, you could undertake a degree (e.g. nursing, physiotherapy, social work or teaching), an apprenticeship, or a key worker role in health or social care.

## HEALTH & SOCIAL CARE

Level 3 | Duration: 2 year

 Tiverton | FTT292

### Full-time

The Health & Social Care industry is one of the largest employers nationally and the ever-changing field of employment requires dedication and committed staff.

This programme will give you a valuable qualification in supporting the varying needs of people of all ages.

You will study the following modules:

- Human lifespan development
- Working in health and social care
- Meeting individual care and support needs
- Principles of safe practice
- Psychological perspectives
- Physiological disorders and their care
- Anatomy and physiology
- Work experience in health and social care
- Supporting Individuals with additional needs
- Caring for individuals with dementia
- Assessing children's development support needs

### ENTRY REQUIREMENTS

You must hold at least five GCSEs at grade 4/C, including Maths and English Language.

### PROGRESSION

Upon successful completion of this course, you could undertake a degree (e.g. nursing, physiotherapy, social work or teaching), an apprenticeship, or a key worker role in health or social care.

## ACCESS TO HIGHER EDUCATION: DIPLOMA IN HEALTH PROFESSIONS

Level 3 | Duration: 1 year

 Tiverton | FTT128L

### Full-time

This Access to HE programme includes Biology (mandatory), and a choice of two of the following subjects:

- Chemistry
- Psychology
- Health Studies

In each of your chosen Level 3 subjects, you will take five modules over the year and can expect to study:

- Biology - biochemistry, cell biology, physiology, human disease, inheritance.
- Chemistry - bonding and reactions, energetics, kinetics and redox, organic chemistry.
- Psychology - criminology (theories of crime), early social development, stress and wellbeing, atypical psychology
- Health Studies - perspectives of health, a brief history of health and medicine, equal opportunity and diversity, interpersonal skills.

### ENTRY REQUIREMENTS

You will need at least grade C/4 in GCSE Science to study Biology and Chemistry. You must be aged 19 or over.

### PROGRESSION

This programme will enable you to progress on to a foundation degree or full honours degree.

## FDSC ASSISTANT PRACTITIONER: HEALTH AND SOCIAL CARE - HIGHER APPRENTICESHIP

Level 5 | Duration: 2 years

 Tiverton | AT121

### Full-time

This course, awarded by the University of Plymouth, consists of 12 subject modules, and each module has two assessed assignments.

You will study the following modules:

- Foundations of health and social care practice
- Concepts of health and wellbeing
- Human growth and development
- Vocational competence for health and social care practice
- The patient journey and care process
- Evidence-based practice
- Leadership and ethics in practice
- Clinical competence and patient assessment

You will also choose two optional modules.

### ENTRY REQUIREMENTS

You must hold a Level 3 QCF Health and Social Care or equivalent, a Level 2 GCSE grade C/4 or above in English and Maths, and a Care Certificate.

### PROGRESSION

Upon successful completion of this programme, you could progress onto a Level 6 BA (Hons) degree.

## FOUNDATION DEGREE HEALTHCARE ASSISTANT PRACTITIONER

Level 5 | Duration: 2 or 3 years

 Tiverton | HET121F/HET121P

### Full-time or Part-time

This course, awarded by the University of Plymouth, consists of 12 subject modules:

- Foundations of health and social care practice
- Concepts of health and wellbeing
- Human growth and development
- Vocational competence for health and social care practice
- Understanding practice
- The patient journey and care process
- Evidence-based practice
- Leadership and ethics in practice
- Clinical competence and patient assessment
- Public health and health promotion

You can also select two further optional modules.

### ENTRY REQUIREMENTS

You must hold a Level 3 QCF Health and Social Care or equivalent, a Level 2 GCSE grade C/4 or above in English Language and Maths, and a Care Certificate.

### PROGRESSION

Upon successful completion of this programme, you could progress onto a Level 6 BA (Hons) degree.

## FOUNDATION DEGREE PSYCHOLOGICAL STUDIES

Level 5 | Duration: 2 or 3 years

 Tiverton | HET120F/HET120P

### Full-time or Part-time

This foundation degree, in partnership with the University of Plymouth, can provide you with the skills needed in a range of careers such as teaching, research, counselling, HR and social work.

During the course, you will study the following modules:

- Social, developmental and behavioural psychology
- Cognitive and biological psychology
- Social development of children
- Psychology of health and illness
- Psychopathology

### ENTRY REQUIREMENTS

You will need 48 UCAS points and GCSE Maths and English Language at grade C/4 or above. Applications from mature students with relevant experience are also welcome. While many applicants will have passed academic examinations, we will often take a wider and more flexible view of your skills or potential.

### PROGRESSION

This course could lead to the one-year top-up BA (Hons) Human Behavioural Studies degree, or an alternative degree course.

# PREPARING FOR ADULTHOOD



MAXIMUM FOUR-DAY TIMETABLE  
FOR FULL-TIME LEARNERS

FIND OUT MORE ONLINE  
[petroc.ac.uk](http://petroc.ac.uk)



"When learners join our Preparing for Adulthood courses, we provide them with a level of support that meets their individual needs, and a range of useful skills to help them gain the independence and confidence needed to succeed in life and future careers. It's always fantastic to see the growth of students who join us - making new friends, and increasing their confidence and self esteem. Most of the learners decide to stay and progress to other courses to further develop their skills, confidence and experience."

**TOBY DI GEORGIO, FACULTY MANAGER PREPARING FOR ADULthood**



## WHAT CAN I EXPECT?

Our specialist team supports learners as they move on from their school environment, by providing safe surroundings and a challenging curriculum that encourages them to become more independent and confident.

With unique facilities such as our cafés, sensory gardens and craft workshops, we provide fantastic spaces where our students can flourish.

Our courses transition learners into the community and employment through a journey that gives them the time and aspirations to have the skills to strive towards their chosen vocation - with guidance from our experienced tutors and support staff.



Entry level to **higher level study options**



**Gain confidence** and skills to enable progression to employment



*discover more!*

## FOUNDATION YEAR

**Entry Level** | Duration: 1 year

**Tiverton** | **FTT307**

**Full-time**

This is a tailored programme designed to meet the educational and support needs of Pre-Entry and Entry Level learners.

It covers the four outcomes that young people with disabilities have said are important to them: Employment, Independent Living, Community Inclusion and Good Health.

The course will include the following elements:

- Nurturing the personal and day-to-day skills
- Developing the relevant skills needed for employment
- Work experience opportunities
- Opportunities to integrate with mainstream students
- Enrichment activities
- Educational visits and a residential trip

### ENTRY REQUIREMENTS

There are no formal entry requirements, however, you will have a one-to-one interview to discuss your personal learning needs.

### PROGRESSION

Upon completion of this course, you will be able to progress towards further education, employment, independent living and participation in the community.

## STUDENT LIFE

**PETROC** *plus*

Petroc offers a wide range of enrichment opportunities to our full-time learners. They will enable you to pursue personal interests or support your individual ambitions, and have been designed to support and complement your learning and develop your confidence in a safe, enjoyable and supportive environment.

### STUDENT UNION



Our students are the heart and focus of everything we do and by choosing to study at Petroc, you will automatically become a member of the Petroc Student Union (PSU).

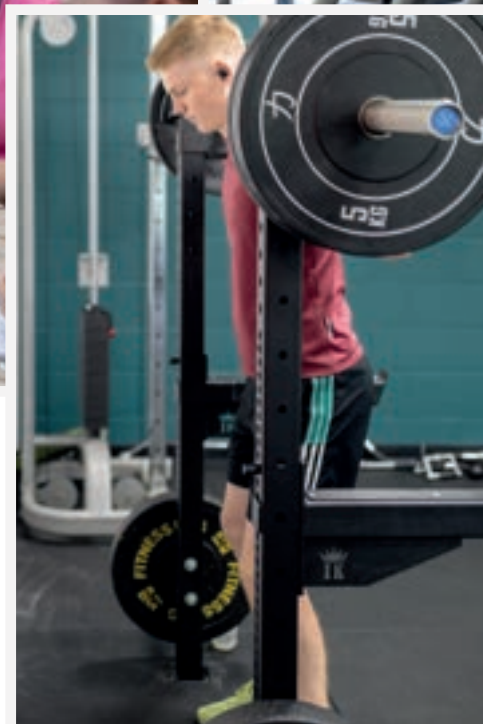
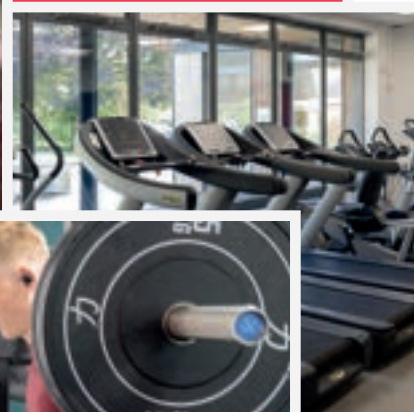
The PSU is run by a volunteer committee of elected students with the sole aim of supporting fellow learners with the many facets of college life.

As a member of the PSU, you are also entitled to certain student discounts and benefits including, for a small cost, those gained through the TOTUM card.

TOTUM is the #1 student discount card and app, giving you access to exclusive student deals on food and fashion, tech, travel and much more!

### CLUBS & ACTIVITIES

We've got a fantastic array of clubs and activities for you to get involved in including film screenings, book club, LGBT+ group, sports and music clubs, eSports and DofE. You could even volunteer be a reporter on our student newsletter 'The Vision'!



over 15  
different clubs

FIND OUT MORE ONLINE  
[petroc.ac.uk](http://petroc.ac.uk)

**Petroc Academies** support the work and activities of specific topic, subject and course areas and give you the opportunity to explore your passions, develop your skills and improve your CV.

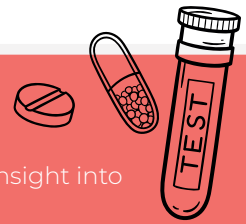


## CARE ACADEMY

When you join our Care Academy, you'll gain a genuine insight into frontline healthcare work.

By shadowing and supporting professionals at a local hospital, you will have the opportunity to interact with patients and staff in a variety of settings - ranging from theatres to podiatry, and physiotherapy to pharmacy - enabling you to gain experience across the breadth of primary healthcare provision.

You must have a passion and commitment to providing compassionate care and a desire to discover more about what a career in health and social care has to offer



## CONSTRUCTION ACADEMY

The Construction Academy is an excellent opportunity for you to gain valuable insight into the world of construction.

There will be amazing opportunities to gain hands-on experience in community initiatives, and you'll be encouraged to take part in high profile competitions and events such as World Skills, HIP and SPARKS.

You'll hear from guest speakers across a variety of construction sectors and learn more about how the green agenda is revolutionising this vast sector. You'll also visit businesses to build your knowledge and awareness of local and national employers – and gain valuable contacts.

You can find out more about our enrichment and academy programmes at [petroc.ac.uk/enrichment](http://petroc.ac.uk/enrichment)



MAXIMUM FOUR DAY TIMETABLE  
FOR FULL-TIME LEARNERS

# SUPPORTING YOU & YOUR LEARNING

Starting college can feel both exciting and daunting. With new buildings and campuses to navigate, lecturers to meet and friends to make, it's perfectly normal to feel a bit nervous. But college is also a place where you should feel free to grow, reinvent yourself and meet like-minded people who share your passions and interests.

Petroc is committed to ensuring you learn in a safe and friendly environment by providing the support you need to shine. We're here to help you succeed during your time here with us and into the future.

## ACCESSIBILITY



We're here to make your life easier so that you can focus on your learning and personal development.

Our campuses are accessible for wheelchair users with ramps and lifts situated throughout the college. We have assistive technology across all curriculum areas and we complete Learning Inclusion Plans with you to ensure that any learning needs you tell us about have strategies and resources in place.

## ADDITIONAL LEARNING SUPPORT

Our experienced teams are on hand to help you with any specific learning needs and/or disabilities you may have.

Our SEND team will coordinate support for students with Education, Health and Care Plans (EHCPs) and the college has designated areas and staff to support neurodiversity.

## CAREERS SUPPORT



Our dedicated careers specialist offers independent, impartial advice via one-to-one appointments and can help you with essential tips to take the next step in your career\*.

This may include guidance on career planning, course and subject choices, post-course options, picking the right university, writing a UCAS personal statement, as well as supporting you with job searches, applications and interview preparation. (\*following the Gatsby career benchmarks)

## CHILDCARE

The Government runs a scheme called 'Care to Learn' for students who need childcare support and who are aged under 20 at the start of their course.

Please contact the Advice & Guidance Centre to find out more about this provision at Petroc and how we can help you achieve the most from your time here.

## EQUALITY AND DIVERSITY

Petroc is an open and inclusive college that values diversity and prides itself on zero tolerance towards discrimination of any kind.

As a student of Petroc, you will have the opportunity to explore and celebrate diversity and equality through your study programme and enrichment activities.

## FINANCIAL SUPPORT

Education is free for all students who are aged 16-18 (on 31 August of the year you start your course). There may be additional costs for books or travel, but please do not let money matters stop you from coming to college.

If you are aged 19 or over, you may have to pay to study, however, there may be funding options or free courses available to you.

We're here for every learner, so if you need financial assistance to cover the costs of studying or travel, we may be able to help. Look for more details about bursary funds, loans or bus passes on our website, or call and speak to our friendly Advice & Guidance Team for more information.

## SAFEGUARDING AND WELLBEING



The protection, safety, health, wellbeing and welfare of all learners are of paramount importance at Petroc.

We follow the statutory guidance and recognise our responsibility to safeguard and promote the welfare and wellbeing of children and young people.

We are committed to a 'whole college approach' to safeguarding. To this end, we will ensure that all staff are trained in Safeguarding and Child Protection and also in preventing radicalisation.

The college provides a comprehensive wellbeing and welfare service to students. This includes support for housing, financial needs, and the physical and emotional safety, wellbeing and welfare of our learners, all of which can impact a student's ability to study.

Our commitment is that every student at Petroc will have the support and tools they need to achieve their best.

## SUSTAINABILITY

At Petroc, we're passionate about sustainability. We believe that there will be no greater challenge to our global future than the current climate emergency.

As a college, we are committed to ensuring that we continuously improve the way our organisation approaches issues of sustainability. We do our part to protect the wider environment by embedding principles and practices that build awareness, highlight responsibilities and meet our own sustainability standards.

Our Sustainability Group meets on a regular basis to discuss cross-college activity, share ideas and consider future initiatives which have included a tree-planting exercise, a pollinator project, sustainability seminars and various on-campus developments to reduce waste and improve energy efficiency. We are also actively committed to the UN Sustainable Development Goals.



## TRAVEL

Petroc Tiverton has an enviable location and benefits from easily accessible bus, train and road links. We have ample parking, plenty of cycle shelters and encourage active and sustainable travel wherever possible.

If you are a student from Tiverton High School, Uffculme School and Cullompton School and will be travelling more than three miles from home to study a Petroc course - either in Tiverton or North Devon - you will be eligible for a free Stagecoach SW Gold term-rider student bus pass.

For more travel information and information on bus passes, please visit [petroc.ac.uk/travel](http://petroc.ac.uk/travel) or contact our Advice & Guidance Centre.

## YOUNG ADULT CARERS

Petroc is committed to helping young adult carers throughout their college experience, and understands that looking after a loved one whilst trying to be a student can be challenging.

We can provide one-to-one personal and academic support, advice and guidance; quiet space to make urgent phone calls; referrals to local services; and support from our wellbeing team.



Contact our friendly Advice & Guidance Team for more information:

01884 235245 | [guidancecentretiverton@petroc.ac.uk](mailto:guidancecentretiverton@petroc.ac.uk)

# PROGRESSION

We are passionate about supporting you throughout your individual learning journey and beyond.

During your time with us, we will help you to explore your interests, your aspirations and relevant career pathways so that you can make an informed decision on what is right for you. Whether you decide to head straight into employment, begin an apprenticeship, move onto the next level of your course or apply for a place at university, we'll be right there with you.

There are a wealth of options open to you that can improve your employability, earning potential, personal growth and development. We'll work with you to match them with your interests, skills and career aspirations and can provide you with the tools, information and guidance you need to make the right choices for you and your future.

Whether you have a career goal in mind or are open to a wide variety of potential roles, we've got the experience, knowledge and ambition to get you moving in the right direction.

## UNIVERSITY-LEVEL COURSES AT PETROC

We offer a number of degree courses at Petroc - both at Tiverton and at our North Devon campus in Barnstaple.

Our University Centre offers higher-level qualifications including Higher National Certificates (HNCs), Higher National Diplomas (HNDs), foundation degrees and honours degrees. These qualifications are offered across a wide range of subjects including business, healthcare, construction, engineering, computing and conservation. All of which can offer you exciting careers close to home or further afield.

Our degrees are validated in partnership with the University of Plymouth and all our courses focus on developing skills and experience in your chosen subject area. Our programmes also focus on working in teams and learning through community-based projects. Plus, all our courses are delivered locally which means you don't have to pay the living and travel costs some students face when they move away to complete their studies.

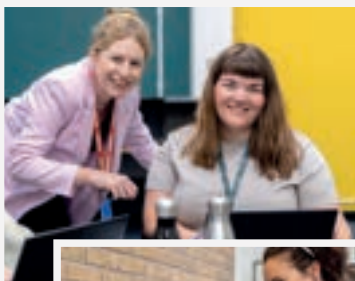
The University Centre at Petroc degree-level courses will help you to achieve your full potential and realise your dream career.

For more information, visit [petroc.ac.uk/degrees](https://petroc.ac.uk/degrees) or scan the QR code.



*discover more!*

UNIVERSITY CENTRE  
**PETROC**



# ADDITIONAL COURSE OFFERINGS AT OUR NORTH DEVON CAMPUS

We offer a wide range of additional courses at our North Devon campus in Barnstaple. And they're just a free\* bus ride away!

For more information, just visit [petroc.ac.uk](http://petroc.ac.uk) or call our Advice & Guidance Centre on **01271 852422**.

## A LEVELS

A LEVELS (CREATIVE INDUSTRIES)

A LEVELS (LANGUAGES & COMMUNICATION)

A LEVELS (MATHS & SCIENCE)

A LEVELS (SOCIAL SCIENCES)

## VOCATIONAL PROGRAMMES

ANIMAL CARE

BUSINESS & MANAGEMENT

CONSTRUCTION

CREATIVE INDUSTRIES

DIGITAL & TECHNOLOGIES

EDUCATION & CHILDCARE

ELECTRICAL & PLUMBING

ENGINEERING & MANUFACTURING

FOUNDATION LEARNING

HAIR & BEAUTY

HEALTH & SOCIAL CARE

HOSPITALITY & CATERING

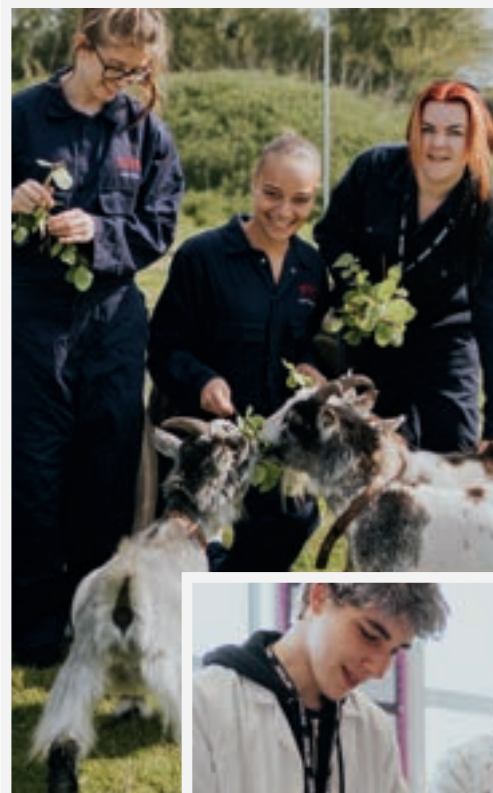
MOTOR VEHICLE

PREPARING FOR ADULTHOOD

PUBLIC SERVICES & OUTDOOR ADVENTURE

SCIENCE

SPORT



\*If you are a student from Tiverton High School, Uffculme School or Cullompton School and will be travelling more than three miles from home to study a Petroc course, you're eligible for a free Stagecoach SW Gold term-rider student bus pass!

# OPEN EVENTS

Open events are the best way to get an insight into life at Petroc, ask questions and find out more about what we can offer you. Come along to one of our events to find out more information:

- Speak to our expert lecturers and find out more about our courses, outstanding results and progression routes.
- Meet current students who will be able to give you a first-hand account of what it's really like to study at Petroc.
- Tour our excellent facilities and see where you'll be studying, playing, relaxing and socialising.
- Get help and information from our friendly Advice & Guidance Team on questions about transport, bursaries, learning support and your application.

Our Tiverton Open Events for this academic year will take place on the following dates:

## Tiverton campus

Tuesday 10 October 2023

Tuesday 16 January 2024

Tuesday 19 March 2024

Find out more at  
[petroc.ac.uk/open-events](https://petroc.ac.uk/open-events)



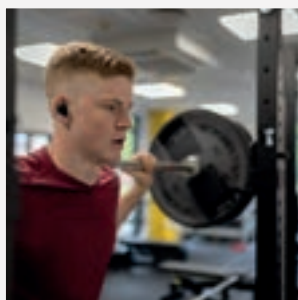
discover  
more!

"I'd heard great things about previous students' experiences and loved the atmosphere on my open day."

DANNI

"After the taster day, I knew that I wanted to come to Petroc; the staff were all very accommodating and made me feel very welcome."

TIANA



PETROC TIVERTON



@PETROCOFFICIAL



PETROCOFFICIAL



PETROCTV

FIND OUT MORE ONLINE  
petroc.ac.uk

#discover  
**PETROC**

## IMPORTANT INFORMATION

Whilst every effort is made to ensure that this course guide is correct at the time of going to print, changes may occur to the courses/fees we offer and/or the services and facilities available.

Any changes may result in a difference to the course fee as advertised on our website (where the student is a fee payer). In some cases where there are insufficient enrolments, you may be offered the chance to pay a higher fee for the course to continue.

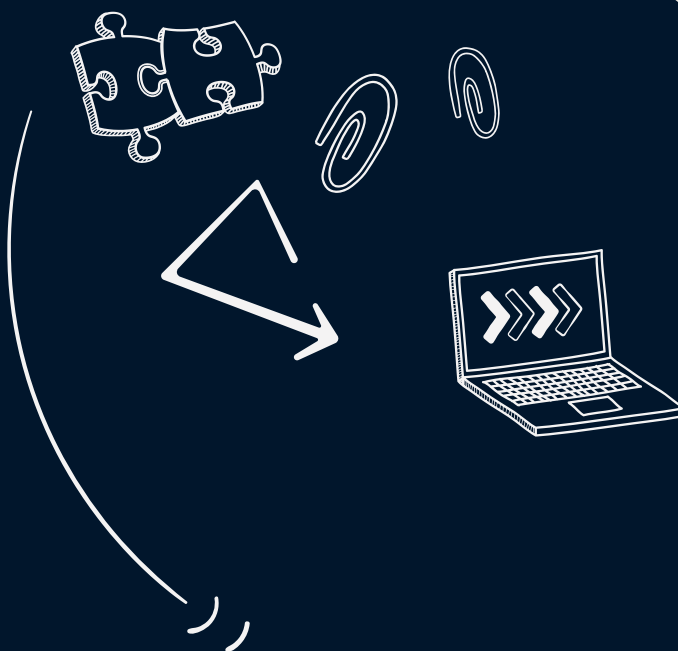
Award and assessment fees are also subject to occasional changes by the Awarding Bodies. You will be contacted should the amount change prior to starting the courses you have enrolled on.

The college cannot guarantee that completion dates and result notifications for courses that require internal and external verification will always coincide with the end dates of the courses listed.

This publication can be made available in other formats or in languages other than English. Please contact our Advice & Guidance Centre: (North Devon) 01271 852422 or (Tiverton) 01884 235245.

Please refer to petroc.ac.uk for up-to-date information.

your future starts here



#### TIVERTON CAMPUS

Bolham Road  
Tiverton  
Devon  
EX16 6SH  
01884 235245

#### NORTH DEVON CAMPUS

Old Sticklepath Hill  
Barnstaple  
Devon  
EX31 2BQ  
01271 345291

[petroc.ac.uk](http://petroc.ac.uk)



WORLD  
LAND  
TRUST™

[www.carbonbalancedpaper.com](http://www.carbonbalancedpaper.com)  
CBP008067