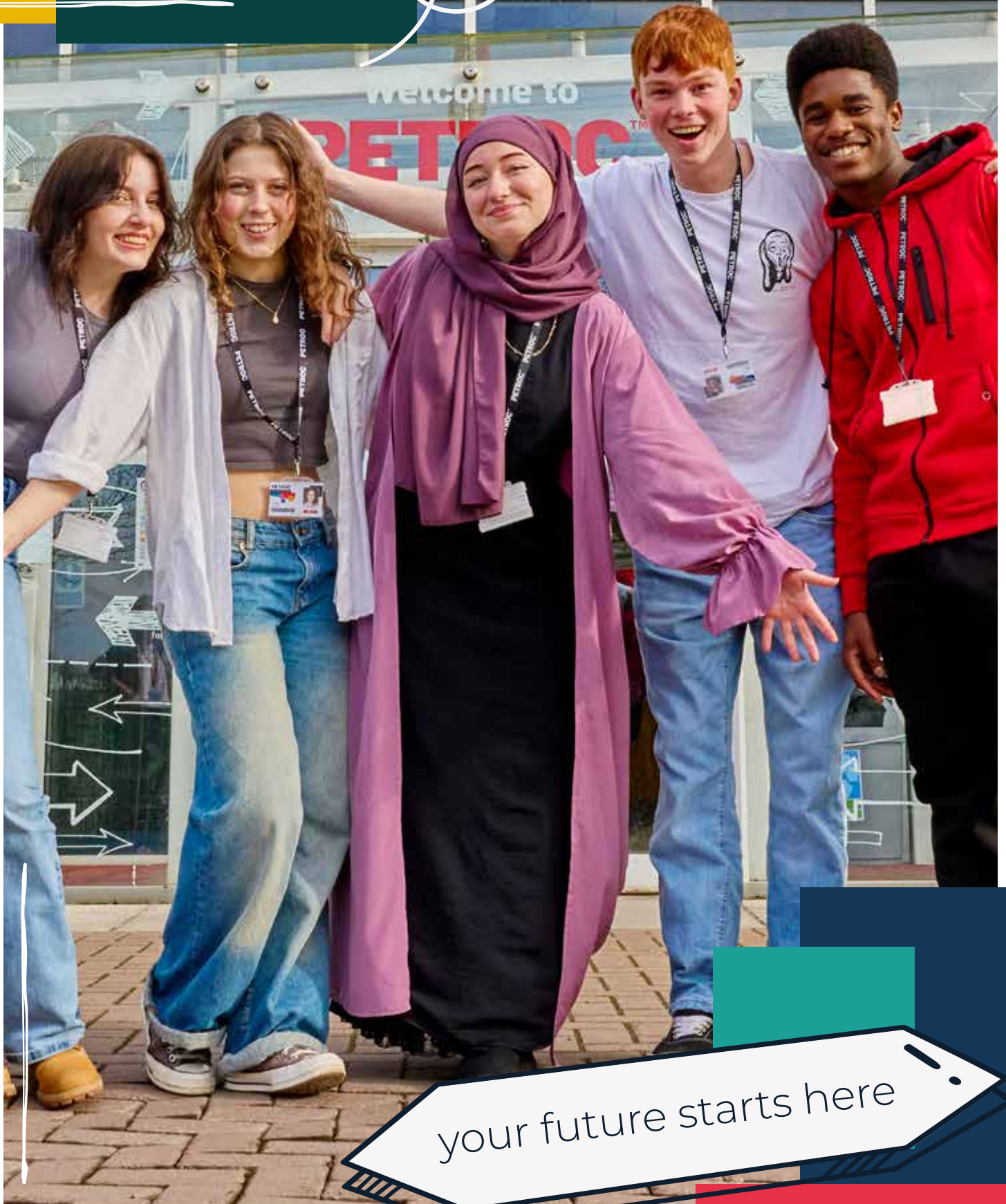


PETROC

SCHOOL LEAVERS'
PROSPECTUS
2025/26



your future starts here !

WANTED: Students who expect more...





Apply now for September 2025 start!

DISCOVER OUR COURSES

NORTH DEVON CAMPUS COURSES

A LEVELS		16
A LEVELS (CREATIVE INDUSTRIES)	18	A LEVELS (MATHS & SCIENCE) 26
A LEVELS (LANGUAGES & COMMUNICATION)	22	A LEVELS (SOCIAL SCIENCES) 32
VOCATIONAL, T LEVEL & APPRENTICESHIP PROGRAMMES		38
ANIMAL & CONSERVATION	40	HAIR & BEAUTY 82
BUSINESS & MANAGEMENT	44	HEALTH & SOCIAL CARE 86
CONSTRUCTION	48	HOSPITALITY & CATERING 90
CREATIVE INDUSTRIES	54	MOTOR VEHICLE 94
DIGITAL & TECHNOLOGIES	60	PREPARING FOR ADULthood 98
EDUCATION & CHILDCARE	64	PUBLIC SERVICES & OUTDOOR ADVENTURE 100
ELECTRICAL & PLUMBING	70	SCIENCE 104
ENGINEERING & MANUFACTURING	74	SPORT, HEALTH & FITNESS 108
FOUNDATION LEARNING	78	

TIVERTON CAMPUS COURSES

VOCATIONAL PROGRAMMES		38
CONSTRUCTION	48	HEALTH & SOCIAL CARE 86
EDUCATION & CHILDCARE	64	PREPARING FOR ADULthood 98
FOUNDATION LEARNING	78	





WELCOME TO PETROC

Exciting times lie ahead as you embark on your journey into further education, and at Petroc, we're here to support you every step of the way.

Whether you are considering studying A Levels, T Levels, an apprenticeship or a vocational course, we are here to equip you with an outstanding education, excellent facilities, exceptional support and valuable connections with local employers.

We know that many great opportunities arise from continuous learning and education. That's why it's our mission to support you to be the best you can be so that you reach your highest potential, whether you're aiming for higher education or entering the workforce.

But we also know that college isn't all about studying! Petroc offers a vibrant community with plenty of extracurricular activities, including academies, sports, and international travel opportunities to make your time here fun, memorable, and to give you the edge, wherever life takes you.

Take a look through this prospectus, explore our exciting offer, find the things with us that spark your interest, take a look at our website and social media channels, and speak to friends, family and career counsellors to discover what opportunities lie ahead. Our campuses are buzzing with possibilities, and our dedicated team is committed to helping you succeed.

We look forward to welcoming you to Petroc!



Dr Jason Jones
Deputy Principal



WHY STUDY AT PETROC?

By choosing to study at Petroc, you'll be taking the invaluable next steps that will lead you towards a rewarding career.

Whatever qualification you choose to study, we will provide you with a supportive environment, excellent facilities, expert lecturers, and great opportunities for work experience - all designed to enrich and build your skillset.

We'll also provide you with the opportunities to pursue personal interests, make life-long friends and expand your horizons.

The next few years have the potential to be some of the most important and memorable of your life. We're here to help you achieve excellence in your learning so that you can fulfil your career and life ambitions!



OUTSTANDING RESULTS



Petroc students consistently achieve excellent results. In the last academic year (2022/2023), 100% of students passed their T Levels, with 38% achieving a Distinction (compared to 21% national average). Similarly, students achieved 98.8% pass rate for Level 3 vocational courses, and 98% pass rate for A Levels - with more than half gaining A* to B. And, 87% of our Level 3 vocational, technical and A Level students who applied through UCAS, succeeded in progressing to their 'Firm Choice' of university.

When talking about our results as a college, we are always keen to emphasise that these are our students' achievements, and we are incredibly proud of each and every one of them. Whether they achieve high grades or overcome personal challenges to achieve their goals, we are in awe of their accomplishments.

Here are just three of the students who won accolades for their personal journeys in our Petroc Student Awards 2024:

- Ruby's lack of confidence and self-esteem meant she struggled to enter the classroom when she first joined Petroc. However, she soon embraced college life, became a valued and respected member of her study group, and is now on track to achieve a distinction and heading on to undertake a teaching degree.
- Kate fully immersed herself in college life, blending perfect academic results with fantastic practical achievement. Away from the course, she could be found helping in the College Zero clothing shop as part of her Gold DofE award, and she arranged an amazing work experience placement in Africa.
- Josh undertook work placements with Exeter University and the Royal Devon University Hospital and embarked on a remarkable journey of self-discovery and professional growth. Despite initial doubts about his abilities, Josh flourished with a new found sense of purpose and possibility.



"The quality of teaching was great - I couldn't fault it. I also made lots of friends - it's like a real community."

Ellen - A Level English Lit, History, Psychology and EPQ

SUPPORTIVE ENVIRONMENT

Our students' safety and wellbeing will always be our top priority.

At Petroc, we provide a supportive, caring and inclusive environment where every student is a valued member of our community.

Whether you require additional guidance and assistance with your studies or help with your personal wellbeing, we will work with you to find the right support to enhance your learning and help you to be the person you want to be.

Find out more about the academic and personal support we offer on page 116.



"Petroc has great facilities and staff for everything you may encounter through studying, and everyone is willing to help and be supportive - it's a really nice feeling."

Eden, Barbering Level 2

EXCEPTIONAL FACILITIES

We offer our students the unique opportunity to train in true-to-life, professional and industry-relevant environments.

Our exceptional facilities include commercial hair and beauty salons; industry-standard vehicle workshops; well-equipped and spacious workshops dedicated to plumbing, electrical and carpentry; and science labs full of specialist equipment.

We're also very proud of our brand new Animal Centre which opened in September 2024, housing a menagerie of animals from geckos and goats to tree frogs and tortoises!

Want to learn more about our facilities? Take a look at our campus tours at petroc.ac.uk/campus-tours.

100%
pass rate for
T Levels
IN 2022/2023



DIGITAL EXPERTISE

At Petroc, we align to the current and future digital needs of industry, so you can be sure you're developing workplace-ready digital skills and gaining familiarity with the real-world tools and platforms used by employers.

Our digital curriculum will offer you the chance to gain essential communication, collaboration, creativity, and critical thinking skills that are essential in our rapidly evolving digital world.

You will have access to unique digital learning opportunities, including Extended Reality (AR, VR, MR and XR) to complement face-to-face experiences. These include Virtual Job Interview Simulator for refining interview skills, Open Brush for unleashing creativity through virtual art, and subject-specific VR explorations such as a tour of Ann Frank's house - all supported by our dedicated Digital Learning Team.

"I have most enjoyed making new friends, the supportive and friendly lecturers and learning whilst working and having outside world experience."

Brooke, Business Administrator
Apprenticeship Level 3

FIND OUT MORE ONLINE
petroc.ac.uk

PROGRESSION

At Petroc, we're passionate about supporting our students throughout their individual learning journey and beyond.

We will support your career aspirations, and our progression pathways will get you to where you want to be. We'll provide you with the tools, information and guidance you need to make the right choices for you and your future.

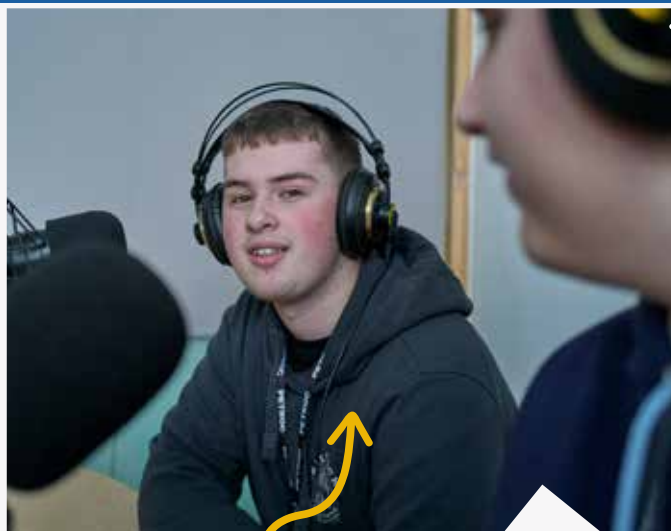
And if you aren't sure what your pathway is yet, don't worry - we've got the experience, knowledge and ambition to spark your curiosity and get you moving in the right direction!

Whether you decide to move onto the next level of your course, apply for a place at university, begin an apprenticeship, or head straight into employment, we'll be right there with you.



"I love being at college - I'm in a good group where I feel really supported and I'm looking forward to moving on to my Level 3."

Aaliyah, Hairdressing Apprenticeship Level 2



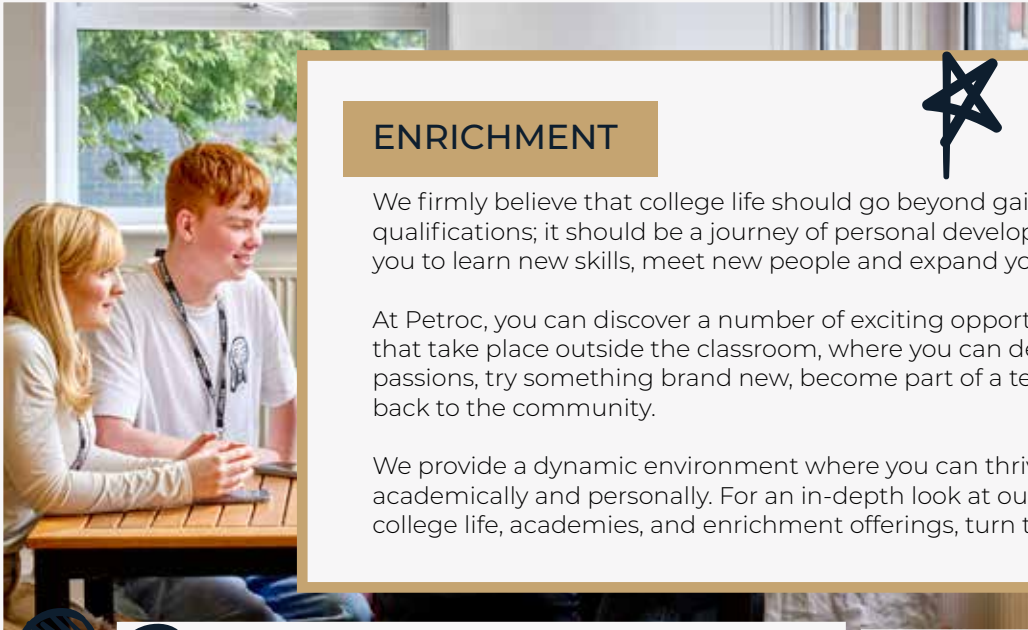
EMPLOYABILITY

SIGHTLINES TO CAREERS

Ultimately, your goal when embarking on a college course will be to gain the experience required to move into a sustainable and rewarding career. Even if you don't yet know what you want to do for your career, we can set you on the right track!

At Petroc, we work closely with a wide variety of organisations to offer placements that will offer valuable insight into employment, give you relevant knowledge and life skills, and help you stand out from the crowd.

New perspectives gained during your placements will help you put your classroom-based learning into practice, understand what it's really like to work in your chosen field and how to interact with colleagues and customers - whether that's in an office, workshop, laboratory or theatre.



ENRICHMENT

We firmly believe that college life should go beyond gaining qualifications; it should be a journey of personal development, helping you to learn new skills, meet new people and expand your horizons.

At Petroc, you can discover a number of exciting opportunities that take place outside the classroom, where you can develop your passions, try something brand new, become part of a team, or give back to the community.

We provide a dynamic environment where you can thrive both academically and personally. For an in-depth look at our vibrant college life, academies, and enrichment offerings, turn to page 113.

"I enjoyed doing badminton with my friends as it was a good stress reliever and a really fun time with no pressure."

Caleb, A Level English Language, English Literature and Psychology

LOCAL BENEFITS

Managing your studies with other commitments can be a real juggling act.

You might have a part-time job, be involved in a sports club, or have caring responsibilities. Whatever your commitments, studying close to home will give you the flexibility to manage your other responsibilities without the added stress of travel.

You won't have to miss a match because of a cancelled train; you'll be able to complete your coursework instead of commuting; and you can hit the beach as soon as your day is over. Plus, you'll be in a familiar, supportive community full of exciting enrichment programmes to enhance your college experience.

It's the perfect blend of convenience, great education, and fantastic support for your journey ahead.



"I chose Petroc as it offered the course I wanted to do in order to achieve my career goals, and it was in a convenient location for travel."

Hermione, Health and Social Care Level 2



FIND OUT MORE ONLINE
petroc.ac.uk

QUALIFICATION OPTIONS

Find out
more!



There are a number of different qualifications available to you at Petroc and we're here to help you choose the route that is most suitable for your needs and aspirations.

Take a look at the information below to get an insight into the main options available and how they might suit your preferred way of learning and your career goals.

If you need any additional support or guidance in choosing the right course or subject/s, our experienced Advice & Guidance Team are on hand to offer independent help and assistance.

A Levels

A Levels are a Level 3 programme and are suitable if you enjoy a more academic style of learning. They usually take two years to complete and most are assessed by examinations with some subjects having a coursework/assignment component.

They allow you to choose and focus on specific subjects that you are passionate about and provide an opportunity to explore topics that may not have been available to you at GCSE level.

A Levels are recognised and accepted worldwide and are excellent preparation if you are considering going on to university because they require a similar type of learning approach and elements of independent study.

There are many subjects that you can choose to study at A Level, and alongside your classroom-based learning, you will be encouraged to get involved in one of our Academies - such as VETMED or Law - to help further develop your knowledge and understanding. You will also be expected to engage in work-based or work-related learning activities that support your career progression.

At Petroc, students normally take three A Levels, although it is possible in exceptional circumstances to study a fourth A Level if appropriate. Our expert team will work with you to ensure your choices support your chosen career or academic pathway.

Take a look at our A Level courses from page 16.

Vocational courses



Vocational programmes combine practical learning with classroom-based teaching.

Throughout your studies, you will be expected to carry out work experience or industrial placements depending on your chosen area of study. You will also be required to undertake a series of exams and assessments.

Vocational courses are available at Levels 1, 2 or 3 and each level will give you a logical and smooth pathway to the next qualification available to you.

- **Level 1** courses offer a broad introduction to a subject area and last for one year.
- **Level 2** courses provide more focus on a specific topic and last for one year.
- **Level 3** courses provide greater knowledge in a specific subject area, usually run for two years and incorporate T Levels. Level 3 courses are equivalent to three A Levels.

Most businesses request Level 3 qualifications when looking for new employees, so we will encourage you to progress in your chosen subject, achieving a Level 3 qualification as a minimum.

Depending on the level completed and your career ambitions, you could progress on to university, an apprenticeship, employment or a higher-level vocational course.

Take a look at our vocational courses from page 38.

If you don't achieve the GCSE grades required for A Levels, don't worry! Our Step Up to A Levels (SUTA) programme will help prepare you for Level 3 study. Find out more on page 17.



T Levels

If you are academically strong and have a skilled career route in mind, a T Level will give you a head start in your chosen industry.

T Levels were introduced by the Government in 2020 and are a two-year technical qualification, suitable for Level 3 learners who want a more practical, employer-led study programme. They've been designed with employers and businesses to provide the skills that industry needs, which means you get to play a key part in shaping the future of the UK economy.

T Levels offer an innovative and valuable blend of classroom learning and work experience with an industry placement of at least 315 hours (the equivalent of 45 days). This means you will spend approximately 80% of your time on college-based learning and 20% of your time in industry placement.

The courses have been developed in collaboration with employers and businesses, so offer the most relevant and up-to-date skill set for a successful career. They are also designed to offer you excellent workplace-based experience to meet business needs across a wide spectrum of industries.

One T Level is equivalent to three A Levels and it's an ideal option if you want to gain the knowledge and experience to go straight into employment, an apprenticeship or on to university.

Take a look at our T Level courses from page 38.

Apprenticeships

An apprenticeship is real workplace-based employment combined with an accompanying skills and knowledge development programme.

Apprenticeships are a great way to earn and learn at the same time so if you know what you want to do and are keen to start your career straight away, an apprenticeship could be for you.

Once you've secured an apprenticeship with an employer, you'll spend 80% of your time at work and 20% in off-the-job training which means you won't miss out on a college experience!

An apprenticeship provides an ideal blend of practical industry experience and essential theoretical learning, enabling you to quickly gain the necessary knowledge and skills for your selected career as well as an insight into workplace behaviours and requirements.

Taking around 18 months to complete, you will be assessed by a combination of work observations, tests and a portfolio of evidence that you will have completed during your apprenticeship programme.

On completion of your apprenticeship you might consider doing a higher or degree apprenticeship which will take your skills and knowledge to the next level.

Take a look at our apprenticeship courses from page 38.



FIND OUT MORE ONLINE
petroc.ac.uk

Things to consider when choosing a course:

- What style of learning do you prefer?
- What subjects do you enjoy?
- What type of career would you like to go into?
- What subjects are you best at?
- What subjects do you need for your chosen career?

WHICH LEVEL IS RIGHT FOR YOU?

UNDERSTANDING QUALIFICATION LEVELS & ENTRY REQUIREMENTS

At Petroc, our dynamic and diverse course provision is central to delivering the skills you need for future success. We have made it our mission to provide clear, logical and appropriate pathways that enable you to progress upward through the qualification levels that meet your aspirations so that you can plan your path to success. Whatever your starting point and your intended destination, our structured pathways will support you to gain the right level and type of qualification to help you achieve your career goals.

Understanding what level or qualification is suitable for you can sometimes feel confusing, so we've created a quick-glance guide to the different levels available - and their related entry requirements. You can also find a detailed explanation at petroc.ac.uk/levelsexplained.

Please remember that the entry requirements detailed below are a guide. During the application process, we will ask you about your predicted grades and these will be used to offer you the most appropriate level course. If you then achieve a higher or lower grade, we may adjust the level of your course accordingly to help you attain your best result.

Some courses require specific or additional grades so please see the individual course details for more information. As always, further information and help can be found on our website, or you can contact our dedicated Advice & Guidance Team.

Find out more



Entry Level:

Entry Level courses give you access to Level 1 qualifications and employment. Qualifications include personalised outcomes to enable you to progress.

Entry requirements:

For all learners joining Entry Level Study Programmes, there are **no formal entry requirements**, however, you will have a one-to-one interview to discuss your personal learning needs. You will also be required to study English and Maths at an appropriate level to suit your ability.

Level 1:

Level 1 courses offer you the opportunity to acquire a broad range of knowledge and practical skills that are not taught in school which will allow you to enter a trade or profession, such as plumbing and construction.

Completing a Level 1 qualification will give you access to Level 2 opportunities, apprenticeships and employment.

Entry requirements:

You must hold **four GCSEs at Grade 2 or equivalent** (or above), preferably **including Maths and English**. If you do not have a GCSE Grade 4 in Maths and/or English, you'll continue studying these subjects alongside your chosen course/s as part of your wider Study Programme. At the end of the year, you are expected to have completed and achieved all the components of your Level 1 Study Programme and improved your Maths and English skills (where applicable) before progressing on to your next course.



Level 2:

Level 2 qualifications will start to provide further focus on a subject that can support the transition to a Level 3 industry-relevant T Level, as well as other Level 3 qualifications, apprenticeships and employment.

Qualifications include GCSEs, vocational qualifications and apprenticeships.

Entry requirements:

All entrants must hold **four GCSEs at Grade 3 or equivalent** (or above), preferably **including GCSE Maths and English**. If you do not have a GCSE Grade 4 in Maths and/or English, you will continue studying these subjects alongside your chosen course/s. At the end of the year, you are expected to have completed and achieved all the components of your Level 2 Study Programme and improved your Maths and English skills before progressing on to your next level course.

Level 3:

Level 3 qualifications will set you on a path to university, higher apprenticeships or employment.

Qualifications include T Levels, A Levels, vocational qualifications, advanced apprenticeships, and Access to Higher Education Diplomas.

Entry requirements:

To be accepted onto a Level 3 programme, you must hold at least **five GCSEs at Grade 4 or above, including GCSE Maths and English Language**. Certain subjects will require higher grade profiles - these are outlined in more detail on our website.

LEVELS 4-6 are university-level qualifications:

Level 4:

Foundation degree (Year 1), honours degree (Year 1), higher apprenticeship, degree apprenticeship, HNC, professional qualifications.

Level 5:

Foundation degree (Year 2), honours degree (Year 2), higher apprenticeship, degree apprenticeship, professional qualifications.

Level 6:

Honours degree (Final Year), degree apprenticeship.



GCSE GRADING

New Grading Structure

Old Grading Structure

9		6		3		
	A*		B		D	U
8		5		2	E	
					F	
7	A	4	C	1	G	

Standard Pass

YOUR STUDY PROGRAMME AT PETROC

A LEVELS, T LEVELS AND VOCATIONAL COURSES

In order to succeed in your chosen career, not only will you need to achieve the right qualifications, you should also be digitally savvy; undertake meaningful opportunities with employers; develop a strong foundation in Maths and English; and enhance your own personal and study skills to develop your character, attitudes and confidence.

This is why every student on our A Level, T Level and vocational courses will have their own structured Study Programme that will support their development and maximise progression on to the next stage of their education, employment or apprenticeship.



YOUR CHOSEN QUALIFICATION/S




MATHS AND ENGLISH LANGUAGE DEVELOPMENT

WORK EXPERIENCE & INDUSTRY PLACEMENTS

PERSONAL DEVELOPMENT

ENRICHMENT



"The teachers were really good - they got me the grades I needed and were really approachable and helpful."

Sam, A Level Maths, Further Maths, Physics and History



SUPPORT

DEVELOPMENT

POTENTIAL



YOUR TIMETABLE

Below are some examples of timetables for A Level and vocational courses.

These are just a guide, but show the likely mix of lesson time, enrichment time and independent study time that will make up your week. You will also have plenty of opportunities for breaks when you can relax with friends in one of our many social spaces!

Example A Level Timetable					
Time	Monday	Tuesday	Wednesday	Thursday	Friday
09:00 - 10:00	Directed Study	Subject 3	Subject 1	Directed Study	Subject 2
10:00 - 11:00	Directed Study	Subject 3	Subject 1	Directed Study	Subject 2
11:00 - 12:00	Subject 1		Directed Study	Subject 2	
12:00 - 13:00	Subject 1	Personal Development	Directed Study	Subject 2	LUNCH
13:00 - 13:30	LUNCH	Sightlines to Careers			
13:30 - 14:30	Subject 2		LUNCH	LUNCH	Subject 3
14:30 - 15:30	Digital Learning		Sport / Enrichment / Academy	Subject 3	Subject 3
15:30 - 16:30	Digital Learning		Sport / Enrichment / Academy	Subject 1	



"I enjoy having breaks in between lessons, this is really useful and I can utilise my time to study and revisit topics I am unsure of."

Elouise, A Level English Language, Business and Psychology



Example Vocational Timetable					
Time	Monday	Tuesday	Wednesday	Thursday	Friday
09:00-10:00	Directed Study	Work placement	Lesson	Directed Study	Lesson
10:00-11:00	Lesson	Work placement	Directed Study	Digital learning	Lesson
11:00-12:00	Lesson	Work placement	Lesson	Lesson	Directed Study
12:00-13:00	LUNCH	Work placement	LUNCH	LUNCH	Lesson
13:00-14:00	Digital learning	Work placement	Lesson	Tutorial	LUNCH
14:00-15:00	Lesson	Work placement	Sport / Enrichment / Academy	Lesson	Lesson
15:00-16:00	Directed Study	Work placement	Sport / Enrichment / Academy	Directed Study	Directed Study



A LEVEL COURSES



discover more!

FIND OUT MORE ONLINE
petroc.ac.uk

WHAT ARE A LEVELS?

A Levels are an excellent choice if you enjoyed a particular subject at GCSE, want to continue to explore it in more detail or plan to study it at university.

They offer access to a broad range of career and higher education options and are an excellent stepping stone if you are undecided about your career pathway.

A Levels are a more academically inclined style of learning than a practical or vocational course and involve an element of independent study which will help you develop the skills and study habits needed to excel at university and in your chosen career.

EXTRA/SUPER CURRICULAR STUDIES

In addition to your classroom-based studies, you will have opportunities to enrich and broaden your subject learning through mentoring, field trips, or even overseas travel. You will also be expected to engage in work-based or work-related learning activities that support your career progression.

We'll also encourage you to sign up to one of our Academies which will help you develop an even deeper understanding of your chosen subjects and help you to prepare for university and work.

You might also want to undertake an Extended Project Qualification (EPQ) alongside your A Levels. EPQs help develop project management and writing skills, both of which are highly regarded by universities and look great on your CV!



806,410 UK A level entries in summer 2023¹

"I am doing an EPQ which has given me freedom with the project and allowed me to get into more depth within my chosen topic, which really helped my knowledge for future studies."

Ella, A Level Art Craft & Design, Business, Geography and EPQ

CHOOSING YOUR SUBJECTS

Most A Level students identify three subjects that they are interested in studying. Alternatively, you may wish to combine two A Levels with one BTEC option (equivalent in size to an A Level) e.g. A Levels in Sociology and Biology and a BTEC in Sport. Exceptionally, some students are able to choose four A Levels but this is dependent on you achieving the required GCSE grades.

Some universities can be very specific about the A Level combinations required for entry onto certain courses so it's a good idea to check what combination is right for you and the next steps you plan to take. If you need help with selecting the best combination of A Levels, our Advice & Guidance Team will be happy to help!

THINGS TO CONSIDER WHEN CHOOSING A LEVELS SUBJECTS

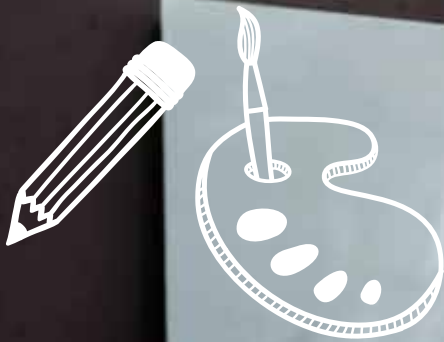
1. Think about what you are likely to enjoy and be good at. Is there a subject you have a particular passion for? If you enjoy a subject or have an ability in it already, you are more likely to do well.
2. Are there any particular subjects and/or grades you need to help you move forward with your career plans?
3. How open and flexible do you want to keep your future study and career choices?

Step Up to A Levels (SUTA) is a one-year A Level introductory programme which is available if you haven't achieved the GCSE grades needed to progress immediately on to your preferred A Level subjects. This will enable you to gain your GCSEs in your first year of study, before moving on to your A Levels in your second and third years.

98%
pass rate
IN 2022/2023

¹ gov.uk

CREATIVE INDUSTRIES



FIND OUT MORE ONLINE
petroc.ac.uk



"I really like the art facilities and the staff are really friendly and welcoming."

Niala, A Level Art Craft & Design (former South Molton Community College student)



WHAT CAN I EXPECT?

Generating £108 billion a year and employing over two million people in the UK, the creative industries offer an unparalleled opportunity to collaborate with a huge variety of professional disciplines - from jewellery design to architecture.

By choosing to study a creative industries course, you will open a door into an exciting, imaginative and rapidly evolving industry.

Art, Craft and Design A Level will allow you to try many different aspects of creative work to find what suits you best. You'll experiment with a broad range of art techniques; delve into realms of various artists, movements and disciplines; and explore innovative ways to communicate your creativity.

Media A Level is an excellent introduction to the theoretical and practical issues surrounding the media industry.

It will provide an understanding of the different sections of the media including advertising, marketing, TV and radio, newspapers, online social content, music videos, gaming, and the film industry.

Our creative spaces and expert and passionate lecturers will provide you with the inspiration, skills and expertise needed to navigate this exciting and diverse industry.

Whatever your interests, working in the creative sector offers an incredible and inspiring variety of career options that could fulfil your passions and achieve professional success. You will develop your talent, imagination, and confidence.

You can use the knowledge gained to go on to university and study a particular area in greater depth or step straight into employment.



There were **2.4m** jobs in the UK creative industries in 2022 – a 14.1% rise since 2019¹



The average annual salary for a Graphic Designer is **£27,693²**

¹ thecreativeindustries.co.uk

² Indeed



Future Careers...

Working in the creative sector offers an incredible variety of career options:

- Architecture
- Fashion Designer
- Graphic Designer
- Illustrator
- Interior Design
- Jewellery Designer



ART, CRAFT & DESIGN A LEVEL

Level 3 | Duration: 2 years

📍 North Devon | FTB003

This A Level will develop your independence and enthusiasm. You will work across a broad variety of practical areas in both 2D and 3D, and explore both design and expressive disciplines.

The course will be made up of the following components:

- Research into a variety of artists, movements and disciplines
- Experiment with a broad range of art techniques and processes
- Develop a personal outcome that links with key themes and personal ambitions
- Produce a written document that encapsulates the fascinations within the individual project
- Present and display an outcome that has meaning and personal significance

You will also undertake an externally set assignment.

Each year there are opportunities to take part in visits to galleries and exhibitions.

ENTRY REQUIREMENTS

You must hold at least five GCSEs at grade 4 or above, including Maths, English Language and a creative subject.

PROGRESSION

Successful completion of this course can lead to a range of careers from architecture or interior design, to fashion forecaster or illustrator. Alternatively, you may decide to progress onto a specialist degree course.

MEDIA STUDIES A LEVEL

Level 3 | Duration: 2 years

📍 North Devon | FTB028

On this exciting Media Studies A Level, you will view, evaluate and analyse a variety of media products, and develop a range of practical skills.

The topics are varied and diverse and will help you to develop research and problem-solving skills as well as explore your own creativity.

During the course, you will study the following topics:

- Media language, media representations and media audiences.
- The film industry
- Advertising and marketing
- Music videos - production, marketing and audience
- Newspaper and radio - production, marketing and audience

ENTRY REQUIREMENTS

You must hold at least five GCSEs at grade 4 or above, including Maths, and English Language at grade 5.

PROGRESSION

Successful completion of this course can lead to a degree course, apprenticeship or employment in areas such as communications, journalism, film, marketing and sociology.



FIND OUT MORE ONLINE
petroc.ac.uk

LANGUAGES & COMMUNICATION



FIND OUT MORE ONLINE
petroc.ac.uk



"I enjoy the group projects and debates in class as it allows me to express my views and hear other people's opinions."

Abigail, A Level English Language, Sociology & Psychology (Former Park Community School student)



WHAT CAN I EXPECT?

From the earliest stories told around a fireside to the latest narratives unfolding on social media platforms, the art of language, communication and storytelling is a universal human experience.

Exploring everything from the spoken voice to the written word, Petroc's qualifications in Languages and Communication promise an inspiring and immersive learning experience and a vast wealth of future study and employment opportunities.

Whether you're passionate about reading, dream of being a writer or poet, or are interested in exploring the evolution of language and communication, these subjects will offer you everything you want and more.

English Literature and Language A Levels will help you to develop your critical understanding of set texts, hone your analytical skills and expand your ability to construct and communicate logical, reasoned arguments.

English Literature, highly regarded and sought after by universities across the UK and abroad, opens doors to diverse academic pathways; whilst English Language is a strong foundation and excellent choice for anyone wishing to pursue a career in teaching.



English is an official language in **75** different countries worldwide.¹



The average annual salary for a Publisher is **£33,966**²

¹ preply.com

² indeed.com



Future Careers...

Communications subjects offer a wealth of employment opportunities:

- EFL Teacher
- Foreign Correspondent
- Journalist
- Publisher
- Secondary School Teacher
- Translator



ENGLISH LANGUAGE A LEVEL

Level 3 | Duration: 2 years

 North Devon | FTB012

In English Language A Level, you will get to explore and appreciate the rich tapestry of our native tongue, both its past, its present and its future; learning how to analyse and comment and to create texts of your own to match an audience. You will also consider varieties and linguistic diversity found within the language.

You will investigate and evaluate English, looking at wide-ranging topics like gender, accent, child language acquisition and language change. You will consider how factors like society, work and prejudice can all play a part to shape our language.

You will also hone your analytical writing skills and try your hand at original articles; undertake your own language investigation, analysing your chosen topic in detail; and create an original piece of writing.

The course will often raise opposing viewpoints which will create a platform for debate with fellow students and lecturers.

ENTRY REQUIREMENTS

You must hold at least five GCSEs at grade 4 or above, including Maths. You must have grade 5 in English Language.

PROGRESSION

Upon successful completion of this course, you may wish to move onto a higher level study of linguistics, speech therapy, law or English Language. An A Level in English Language is invaluable if you are considering teaching, the media or journalism, and it gives you excellent transferable skills.

ENGLISH LITERATURE A LEVEL

Level 3 | Duration: 2 years

 North Devon | FTB013

If you're an avid reader and a lover of literature, this highly regarded study programme is a natural choice for you. You'll read and examine a real variety of writing from different periods and genres, building on the analytical skills you've acquired at GCSE.

The course texts can vary but currently include such great titles as 'The Great Gatsby' by F. Scott Fitzgerald, Shakespeare's 'Othello' and a collection of poetry. You will also learn how to analyse unseen texts and how to apply your skills in comparison of a wide variety of texts.

You will then be encouraged to follow your own interests through the comparison of two texts and go on to study a further range of texts such as 'The Handmaid's Tale' by Margaret Atwood, 'A Streetcar Named Desire' by Tennessee Williams and another collection of poetry.

ENTRY REQUIREMENTS

You must hold at least five GCSEs at grade 4 or above, including Maths and English Language. You must have grade 5 in English Literature.

PROGRESSION

This is a subject which is highly regarded everywhere. You may wish to progress to university to an English Literature degree or another humanities subject. Alternatively, you may decide to seek a career in the media, publishing, marketing or teaching.

MEDIA STUDIES A LEVEL

Level 3 | Duration: 2 years

 North Devon | FTB028

On this exciting Media Studies A Level, you will view, evaluate and analyse a variety of media products, and develop a range of practical skills.

The topics are varied and diverse and will help you to develop research and problem-solving skills as well as explore your own creativity.

During the course, you will study the following topics:

- Media language, media representations and media audiences.
- The film industry
- Advertising and marketing
- Music videos - production, marketing and audience
- Newspaper and radio - production, marketing and audience

ENTRY REQUIREMENTS

You must hold at least five GCSEs at grade 4 or above, including Maths, and English Language at grade 5.

PROGRESSION

Successful completion of this course can lead to a degree course, apprenticeship or employment in areas such as communications, journalism, film, marketing and sociology.



MATHS & SCIENCE

$$\pi \approx 3.141$$



FIND OUT MORE ONLINE
petroc.ac.uk





"It's a bit cheesy but I enjoyed all the learning, the teachers have been great and the experience as a whole has been amazing."

Noah, A Level Maths, Further Maths, Chemistry & Physics (previously homeschooled)



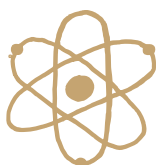
WHAT CAN I EXPECT?

With the potential to unlock the mysteries of the universe, this curriculum area focuses on the high-performing STEM-related subjects of Science, Technology, Engineering and Mathematics.

Offering the most diverse selection of potential career trajectories, STEM subjects including biology, chemistry, environmental science, physics, and computer science, can take you around the world and into almost any industry.

Your study experience in any of these subject areas will hone essential skills crucial for success in today's dynamic world. You will develop your skills of analysis, problem-solving, creativity, critical thinking and collaboration; all core abilities valued by top universities and employers within the STEM sector.

In addition, you will have the chance to join our STEM or VETMED Academies.



Approximately **20%** of people in the UK need scientific knowledge and training to do their current jobs.¹



The average salary for a Financial Advisor is **£49,310**²

¹ royalsociety.org ² Indeed.com



Future Careers...

Providing pathways into a wide range of engineering and science-based jobs:

- Aerospace engineer
- Conservation Ecologist
- Chemical Engineer
- Data scientist
- Mathematician
- Secondary School Teacher



BIOLOGY A LEVEL

Level 3 | Duration: 2 years

📍 North Devon | FTB004

This challenging and stimulating programme develops your understanding of biology through the study of a wide range of topics which you will learn through a range of practical investigations.

You will study the following modules:

- Development of practical skills, such as planning, implementing, analysis and evaluation
- Foundations in biology
- Exchange and transport
- Biodiversity, evolution and disease
- Communication, homeostasis and energy
- Genetics, evolution and cosystems

ENTRY REQUIREMENTS

You must hold at least five GCSEs at grade 4 or above, including Maths and English Language. You must also have a grade 6 in Biology or grade 6 in both Core Science and Additional Science.

PROGRESSION

Biology A Level is highly regarded by universities and employers. You may decide to go on to university to study for a career in medicine, ecology, microbiology, conservation, or physiotherapy.

CHEMISTRY A LEVEL

Level 3 | Duration: 2 years

📍 North Devon | FTB005

This stimulating, practical A Level Chemistry programme builds on topics you will have covered at GCSE, and then takes you into new territories such as spectroscopy and the transition metals.

You will study the following topics:

- Atomic structure and bonding
- The periodic table
- Rates of reaction
- Aromatic compounds and amines
- Identifying mechanisms for chemical reactions
- Learning how to conduct characteristic tests for carbonyl compounds

There will be more application of mathematical formulae in the second year, such as using logarithmic functions to determine pH, and use of spectroscopy in analysis of compounds.

ENTRY REQUIREMENTS

You must hold at least five GCSEs at grade 4 or above, including Maths and English Language. You must also have a grade 6 in Chemistry or a grade 6 in both Core Science and Additional Science.

PROGRESSION

A Level Chemistry is highly regarded and leads into a wide range of science-based degree courses from medicine to biochemistry and chemical engineering. It is also extremely useful if you wish to study other sciences, especially biology and physics.

COMPUTER SCIENCE A LEVEL

Level 3 | Duration: 2 years

📍 North Devon | FTB264

Advances in computing are transforming the way the world works. Computer Science A Level will teach you the principles and concepts of computer science and you will be encouraged to think creatively, innovatively, analytically, logically and critically.

You will study the following modules:

- Fundamentals of programming
- Fundamentals of data structures
- Systematic approach to problem-solving
- Fundamentals of data representation
- Fundamentals of computer organisation and architecture
- Fundamentals of communication and networking
- Fundamentals of algorithms
- Fundamentals of databases
- Big Data
- Fundamentals of functional programming

This will all include the language of programming, bits and bytes, binary, bitmap imaging, the digital representation of sound, hardware and software and Boolean algebra processing.

ENTRY REQUIREMENTS

You must hold at least five GCSEs including English Language at grade 5 and Maths at grade 6.

PROGRESSION

On successful completion of this course, you may wish to progress to university to study a degree in computer science in order to follow a career such as a business analyst, database administrator, games developer, IT consultant, programmer, SEO specialist, web designer or big data consultant.

ENVIRONMENTAL SCIENCE A LEVEL

Level 3 | Duration: 2 years

 North Devon | FTB014

Environmental Science is a highly relevant and topical course which combines geography with biology to understand how humans interact with their environment, and the consequences and solutions of these actions.

You will study the following modules:

- The living and the physical environment
- Atmospheric pollution, water resources and supplying the world with building materials and metals
- The global effects of energy supply
- Farming, fishing and forestry

The course is supported by fieldwork, laboratory work and excursions which will enhance your understanding of research methods and conservation.

ENTRY REQUIREMENTS

You must hold at least five GCSEs at grade 4 or above, including English Language. You must achieve a grade 5 in Maths and two sciences.

PROGRESSION

On successful completion of this course, you may wish to progress to university to study subjects such as environmental science, geology, marine biology or conservation.

MATHEMATICS A LEVEL

Level 3 | Duration: 2 years

 North Devon | FTB026

A Level Mathematics builds on your existing mathematical skills gained at GCSE. You will study Pure Mathematics, and to broaden your experience, you will also study some applied mathematics.

You will study the following subjects:

- Pure Mathematics including algebra, geometry, sequences and series, calculus, exponentials, logarithms and trigonometry.
- Statistics will involve dealing with a large set of data, making use of both scientific calculators and mathematical software.
- Mechanics including Newton's laws of motion, dynamics and statics

The skills gained in your first year will be used and built upon in your second year, by extending the depth of the topics studied.

ENTRY REQUIREMENTS

You must hold at least five GCSEs at grade 4 or above including a grade 6 in Maths and a grade 5 in English Language.

PROGRESSION

Mathematics is a prized qualification for university. It highlights your natural problem-solving ability and logical ordered thinking. You may decide to progress onto a degree course in a mathematics discipline, physics or engineering, or progress straight into the workplace.

FURTHER MATHEMATICS A LEVEL

Level 3 | Duration: 2 years

 North Devon | FTB027

If you have a genuine love of, and a real aptitude for mathematics, this Further Mathematics study programme will take you deeper into this hugely rewarding subject and allow you to really explore your abilities.

During the course you will study a compulsory unit on pure mathematics, which covers a range of topics including series, complex numbers and matrix algebra which are not encountered when studying A Level Mathematics. There will also be units covering statistics, hyperbolic trigonometric functions, simple harmonic motion, circular motion and oblique impacts.

Further Mathematics is only offered as a 4th A Level alongside A Level Mathematics.

ENTRY REQUIREMENTS

You must hold at least five GCSEs at grade 4 or above, including English Language, and a grade 7-9 in Maths.

PROGRESSION

A Level Further Mathematics is an excellent stepping stone towards any maths related degree course including physics or engineering.

PHYSICS A LEVEL

Level 3 | Duration: 2 years

📍 North Devon | FTB035

Physics has been gaining in popularity in recent years, and physicists are highly valued in a broad range of careers.

This Physics A Level study programme is made up of theoretical units, building on and extending the physics knowledge gained from GCSE, and introducing new subject areas.

You will study the following topics:

- Basic laws of the universe
- Understanding motion, forces, work and energy
- The behaviour of materials
- Electricity
- Quantum mechanics
- Newton's laws
- Electric and magnetic fields
- Circular and simple harmonic motion
- Atoms and nucleus
- The physics of medicine

You are required to take Mathematics A Level alongside Physics A Level.

ENTRY REQUIREMENTS

You must hold at least five GCSEs at grade 4 or above, including English Language. You will need a grade 6 in Maths and a grade 6 in Physics or grade 6 in both Core Science and Additional Science.

PROGRESSION

If you are considering going to university, Physics A Level can lead onto a range of degrees including engineering, biophysics, sustainable energy research, economics and veterinary science.

SPORT BTEC (A LEVEL EQUIVALENT)

Level 3 | Duration: 2 years

📍 North Devon | FTB197

This course is designed for students who wish to study a Sport and Physical Education topic alongside other A Level subjects.

You will cover four key topics:

- Anatomy and physiology in Sport: The structure and function of the five different body systems that allow us to perform as athletes.
- Practical sports performance: Perform, analyse and review sporting performance.
- Fitness training and programming for health, sport and wellbeing: Develop an individual's health, fitness and wellbeing.
- Professional development in the sports industry: Investigate the sports industry, employment opportunities and career pathways on offer.

This course is equivalent to (and generates the same UCAS points as) one full A Level.

ENTRY REQUIREMENTS

You must hold at least five GCSEs including English Language and Maths.

PROGRESSION

Upon successful completion of this course you will be able to study a sport-related degree level course such as sports coaching, sport science, sport marketing, sports massage or a teacher qualification.

STEP UP TO A LEVELS (SUTA)

Level 2 | Duration: 1 year

📍 North Devon | FTB637

This course is designed for students who haven't achieved the grades required for their A Level programme.

During the course, we will help you to achieve grade 4 or above in a suite of GCSE courses so that you can progress onto your chosen A Level programme.

You will study up to 5 GCSEs which follow a combined humanities and science pathway: English, Maths, Sociology, Citizenship and Combined Science. You will also undertake Progression Studies where you will complete work at A Level standard in preparation for progression onto your chosen A Level programme.

ENTRY REQUIREMENTS

You will need to have achieved at least 3 GCSEs at grade 3 or above, with the reasonable chance of gaining a grade 4 once you have completed the programme. If you have not previously studied GCSEs, you will be required to undertake English and Maths assessments as part of the interview process.

PROGRESSION

Upon successful completion of the programme, and with good attendance, you will be able to progress onto A Levels.



SOCIAL SCIENCES



FIND OUT MORE ONLINE
petroc.ac.uk



"The quality of teaching was great, I couldn't fault it. I also made lots of friends – it's like a real community."

Ellen, A Level Psychology, English Literature & History, and EPQ (Former Park Community School student)



WHAT CAN I EXPECT?

For aspiring leaders, historians, curators, lawmakers and environmentalists, the Social Sciences invite you to understand the complex and rapidly changing systems and interactions within human society.

Subjects ranging from business, history, and geography to politics, sociology, and classical civilisation, will not only ignite lively discussions, they will give you opportunity for independent study and research, enabling you to immerse yourself in topics you feel passionate about and which could help you make a positive impact on the world around you.

Providing a strong academic foundation, these subjects pave the way for further investigation and exploration. Explore how governments are formed and laws are made, how societies create and evolve economic systems, how history informs the present, and how individuals and groups make decisions. Gain a deeper understanding of the way the world has developed and how you can contribute to shaping its future.

Throughout your journey, you'll learn to analyse, critically evaluate and debate topics and ideas while developing your own values and beliefs based on the knowledge you have acquired.

While studying at Petroc, you will also be encouraged to join one of our Academies where you can nurture your interests and enhance your higher education and employment opportunities.

Social Sciences offer you a myriad of higher education and employment choices that could take you around the globe.



In 2023, there were approximately **54,000** psychologists employed in the UK.¹



The average salary for a Social Worker is **£49,769**

¹ Statista.com ² Indeed.com



Future Careers...

Make a positive impact on the world around you in a wide variety of careers:

- Civil Servant
- Human Resources Officer
- International Aid Worker
- Paralegal
- Solicitor



BUSINESS A LEVEL

Level 3 | Duration: 2 years

📍 North Devon | FTB341

When you study Business A Level, you will learn to demonstrate the inter-related nature of business using business models, theories and techniques to support analysis of contemporary business issues and situations.

You will develop your understanding of how businesses operate, how to analyse data, the decision-making process, competition and changing technology.

You will study the following modules:

- What is business?
- Decision-making to improve financial performance
- Choosing strategic direction
- Managing strategic change

You will use non-quantitative and quantitative data including the interpretation of index numbers and calculations such as ratios and percentages.

ENTRY REQUIREMENTS

You must hold at least five GCSEs at grade 4 or above, including Maths and English Language at grade 5.

PROGRESSION

Successful completion of this course can lead to a range of career choices such as management, marketing, finance, retailing, manufacturing, project management and local government. It's also a great route for studying courses such as economics or business studies at degree level.

CLASSICAL CIVILISATION A LEVEL

Level 3 | Duration: 2 years

📍 North Devon | FTB007

In this Classical Civilisation A Level course, you will look at some truly fascinating periods in history.

You will study the world of the Ancient Greeks, and in particular 'The Odyssey', by the poet Homer, in which the culture and religion of the Greeks is interwoven with the characters and monsters he meets.

You will also study Ancient Rome, specifically the politics of the Roman Republic and the political ideas of that time. You will get to know leaders such as Julius Caesar, Marcus Cicero and Marcus Cato and the tumultuous events that led to the collapse of the Roman political system in the last century BC. You will examine Rome's first 'Emperor', Augustus, and the way in which he created an image that ensured his uninterrupted rule of Rome and its Empire for over 40 years. You will also look at art, architecture, coins and poetry to see how he was able to communicate specific messages of power and authority to those he ruled over.

ENTRY REQUIREMENTS

You must hold at least five GCSEs at grade 4 or above, including Maths and English Language at grade 5.

PROGRESSION

The knowledge and skills learned on Classical Civilisation A Level can lead you on to study a wide range of subjects at university as well as careers such as teaching, publishing, curating and politics.

ECONOMICS A LEVEL

Level 3 | Duration: 2 years

📍 North Devon | FTB010

Economics is a vibrant, exciting and relevant subject. It affects every aspect of our lives, from the decisions we make as individuals to the structures created by governments and firms. It relates economic theories to challenges such as globalisation and its effects on the UK in terms of jobs and migration, and issues facing individual businesses such as marketing and management.

During the course, you will be introduced to the nature of economics, how markets work and why they fail, consumer choices and enterprise in the economy. You will also consider the role of banks and life in a global economy.

You will also explore the impact of globalisation on consumers, firms and the labour market, and investigate the role of the government and the financial sector.

ENTRY REQUIREMENTS

You must hold at least five GCSEs at grade 4 or above, including Maths and English Language at grade 5.

PROGRESSION

Studying economics will help you develop transferable skills that will prepare you for studying at university or moving into the world of work. You may decide to study for a degree in environmental economics, business economics, international business or finance. These may lead onto careers in sales, banking, product management or general management.

GEOGRAPHY A LEVEL

Level 3 | Duration: 2 years

 North Devon | FTB016

This is a broad Geography course that will help you make sense of what is happening in the world today. It will inspire and develop your geographical understanding to help you engage with real-world issues and places.

You will study the following units:

- Tectonic processes and hazards
- Coastal landscapes and change
- Globalisation
- Diverse places
- The water cycle and water insecurity
- The carbon cycle and energy security
- Superpowers
- Migration, identity and sovereignty

You will undertake a minimum of two days of fieldwork each year, across human and physical geography topics.

ENTRY REQUIREMENTS

You must hold at least five GCSEs at grade 4 or above, including Maths and English Language at grade 5. You should ideally have a grade 4 in GCSE Geography.

PROGRESSION

Geography is an excellent subject for many degree courses in both the sciences and humanities as it provides many opportunities for you to develop your skills and problem-solving ability. You may decide to specialise in a particular aspect of the subject such as international relations, human geography, physical geography or earth sciences.

HISTORY A LEVEL

Level 3 | Duration: 2 years

 North Devon | FTB021

History is a fantastic choice if you are interested in the values, events and ideas that underpin our world today.

You will study two core areas - one in breadth and one in depth.

The depth study concerns British history and focuses on the War of The Roses and Henry VII. This is an exciting period of history as proven by its inspiration of Game of Thrones as well as prominent authors such as Phillipa Gregory and Conn Iggulden.

The breadth study will look at the history of Germany between 1871 and 1991. From Bismarck to Weimar through Hitler and the Cold War to the fall of the wall; this module goes far beyond the traditional scope of obsessing Nazi Germany that dominates many other history curricula.

In addition, Soviet Russia will be the inspiration for coursework-based historical investigation and you will also be given the opportunity to focus on an area of personal interest.

ENTRY REQUIREMENTS

You must hold at least five GCSEs at grade 4 or above, including Maths, and a grade 5 in English Language.

PROGRESSION

On completion of your course, you may wish to undertake a degree course in history or a joint degree with another subject. History can lead to a range of professional careers including journalism, archaeology, law, business, teaching, management and politics.

LAW A LEVEL

Level 3 | Duration: 2 years

 North Devon | FTB025

Law may be one of the most prestigious career paths you can follow and this programme of study provides an excellent grounding in the subject. You will gain an overview of the law, as well as the ability to discuss sources of law, the English Legal System and explore law, morality and justice.

You will study the law of tort, criminal law and the law of contract. When you study the English Legal System, you will learn about the progress of a criminal trial and the personnel involved in the administration of law.

You'll gain real insight into how the legal system in this country works and how and why law is made.

You will debate issues such as euthanasia, bringing back the death penalty, abortion, the rule of law and other sensitive and emotive issues that require questions of justice and morality to be considered.

ENTRY REQUIREMENTS

You must hold at least five GCSEs at grade 4 or above, including Maths, and English Language at grade 5.

PROGRESSION

Successful completion of this course can lead to university to study law or other non-law related degrees. Alternatively, you may decide to study as a legal executive with a law firm and progress through the ILEX route. Law is a useful subject to study for any career, be it science or humanities-based and can lead to roles in accountancy, psychology, business, or law.

POLITICS A LEVEL

Level 3 | Duration: 2 years

📍 North Devon | FTB260

Politics explores relationships between governments, people and ideas. This course is perfect if you wish to work in and/or study governance, political systems and the ideas that drive our world.

During the course, you will study the following topics:

- The nature of UK governance
- The construction of the UK state and its politics
- The United States and comparative politics
- An introduction to political philosophy

As you progress through the course, you can look forward to relating the knowledge you have learned to other political systems around the world including the United States.

ENTRY REQUIREMENTS

You must hold at least five GCSEs at grade 4 or above, including Maths, and a grade 5 in English Language.

PROGRESSION

Politics is a sought-after A Level from all higher education institutions as it adds weight to applications in a range of subjects from sociology and law, to history. It also has high value in careers such as business, researching and campaigning.

PSYCHOLOGY A LEVEL

Level 3 | Duration: 2 years

📍 North Devon | FTB036

Psychology A Level examines many theories that try to explain human behaviour; what makes us think, feel and behave.

You will study the following topics:

- Cognitive psychology: Memory and eyewitness testimony
- Developmental psychology: The influence of our early attachments
- Psychopathology: Understanding and treating disorders like depression and phobias
- Social psychology: Conformity, obedience and independent behaviour
- Attraction and relationships: How relationships form, are maintained and break up
- Schizophrenia: Symptoms and treatments
- Forensic psychology: Profiling and psychological consequences of prison

Throughout the course, you will be involved in discussions, debates, presentations, problem-solving and group work.

ENTRY REQUIREMENTS

You must hold at least five GCSEs at grade 4 or above including grade 5 in Maths and English Language, and either grade 5 in Biology or grade 5 in both Core Science and Additional Science.

PROGRESSION

One of the greatest strengths of psychology is the variety of career paths that are available to people who study it. You can tailor your route through university and careers to focus on professions such as forensic psychology, clinical psychology, health, child psychology, advertising and education.

SOCIOLOGY A LEVEL

Level 3 | Duration: 2 years

📍 North Devon | FTB037

This stimulating and topical course enables you to better understand people's behaviour and the societal influence on their lives.

You will build up your knowledge and understanding of sociological thought and methods as well as develop your skills of analysis and evaluation.

Through this course, you will study the following topics:

- Families and households: Looking at the structure of the family and how it has changed over time
- Education: How schools influence our lives and why education is organised
- Crime and deviance: Underlying causes and trends in deviance
- Media: What influence media has on our lives

Alongside these topics, you will look at the theoretical perspectives and the methods used by sociologists to investigate society.

ENTRY REQUIREMENTS

You must hold at least five GCSEs at grade 4 or above, including Maths, and a grade 5 in English Language.

PROGRESSION

Upon successful completion of this course, you may decide to move on to higher education or seek employment. Sociology is particularly useful for careers in the civil service, local government, management, voluntary agencies, teaching, journalism, social work and nursing.

STEP UP TO A LEVELS (SUTA)

Level 2 | Duration: 1 year

📍 North Devon | FTB637

This course is designed for students who haven't achieved the grades required for their A Level programme.

During the course, we will help you to achieve grade 4 or above in a suite of GCSE courses so that you can progress onto your chosen A Level programme.

You will study up to 5 GCSEs which follow a combined humanities and science pathway: English, Maths, Sociology, Citizenship and Combined Science. You will also undertake Progression Studies where you will complete work at A Level standard in preparation for progression onto your chosen A Level programme.

ENTRY REQUIREMENTS

You will need to have achieved at least 3 GCSEs at grade 3 or above, with the reasonable chance of gaining a grade 4 once you have completed the programme. If you have not previously studied GCSEs, you will be required to undertake English and Maths assessments as part of the interview process.

PROGRESSION

Upon successful completion of the programme, and with good attendance, you will be able to progress onto A Levels.



VOCATIONAL COURSES, T LEVELS & APPRENTICESHIPS



discover our
courses!

FIND OUT MORE ONLINE
petroc.ac.uk

WHAT ARE VOCATIONAL COURSES?

Vocational courses are designed to combine classroom theory with practical hands-on learning and essential work experience. Our courses are structured across Levels 1–3, catering specifically to students who thrive in a dynamic and practical learning environment.

Our vocational courses span a range of subjects, each supported by facilities that mirror real-life work settings. These include a simulation hospital ward, an automotive garage, an animal care centre, a childcare training room, hair and beauty salons, an engineering workshop and lots more.

This approach to combined learning is designed to provide you with an educational experience that not only provides relevant skills and knowledge but also prepares you for your future career or higher education opportunities.

WHAT ARE T LEVELS?

T Levels are Level 3 qualifications offering a blend of classroom theory and practical learning, supplemented by a minimum 45-day industry placement. This allows you to spend 80% of your time in college and 20% in a professional work placement, helping you to develop industry-specific skills.

The courses have been developed in collaboration with employers and businesses, so offer the most relevant and up-to-date skill set for a successful career. They are also designed to offer you excellent workplace-based experience to meet business needs.

T Levels are suitable for Level 3 learners who want a more practical, employer-led study programme and are ideal if you are academically strong and have a skilled career route in mind.



WHAT ARE APPRENTICESHIPS?

Apprenticeships combine a genuine job with structured teaching, so it's the perfect combination of hands-on experience and a salary - meaning you get to earn while you learn!

You will usually spend 80% of your time in the workplace and 20% of your time in the classroom.

Apprenticeships can last anywhere between one and four years depending on the course. They are available from Level 2 right up to Level 7 (equivalent to a postgraduate qualification) and are available across a wide range of industries including construction, business, engineering and childcare.

They provide an excellent route into employment with over 90% of apprentices staying on in their role after their apprenticeship has ended.

COMPLEMENTARY STUDIES

In addition to your vocational studies, you will also have the opportunity to sign up for one of our Academies or enrichment activities which can help you develop a deeper understanding of your chosen subject and prepare for higher education or the workplace.

All vocational courses at Petroc are assessed through a grading system that includes Pass (P), Merit (M), Distinction (D) and Distinction star (D*). Achieving a D* is equivalent to achieving 3 A Levels at grade A*, offering the same number of UCAS points.

98.8%
pass rate

FOR LEVEL 3
VOCATIONAL
COURSES IN 2022/2023

100%
pass rate

FOR T LEVELS IN
2022/2023

"The students come to the workshop and are keen to learn about all facets of the engineering facility we have, and have produced some outstanding pieces of work."

Sgt Andrew Jackson, Lead Mentor for T Level students,
Commando Logistics Regiment Royal Marines, Chivenor.



ANIMAL & CONSERVATION



Brand new £1.1m
Animal Centre
to open in 2024!



discover more!

FIND OUT MORE ONLINE
petroc.ac.uk



"I really enjoy all of my lessons due to the large amount of interesting topics which can help us in the real world, including but not limited to training of animals, handling and restraint, and other fun topics."

Riley, Animal Care and Management Level 3 (Former Park Community School student)



WHAT CAN I EXPECT?

For lovers of creatures large and small, the rapidly expanding animal care industry offers the perfect blend of passion and profession.

Whether you dream of a career as an animal behaviourist, conservationist or welfare inspector, Petroc provides the best provision for animal care courses in North Devon. So there is no better place to undertake your studies in this exciting and rewarding sector!

Our Animal Care programmes offer you the chance to immerse yourself in your passion for all creatures great and small, study with like-minded people, and make a positive contribution to animal welfare.

The comprehensive blend of practical experience and supporting theoretical knowledge will suit all types of learners, helping you to explore different aspects of animal care, and giving you the insight and experience you need to help you choose your future career path.

Our brand-new Animal Care Centre includes a small mammal room, a rabbit and guinea pig room, two exotics rooms (arid and jungle) and a vet room. We also have various outdoor enclosures, including a new aviary for our bird of prey, and a large paddock and stable block for our mischievous pygmy goats!

These excellent practical learning spaces complement the passion and experience of our animal care experts and teachers.

Completing our Animal Care courses opens doors to dream careers. Petroc alumni have gone on to pursue their dream jobs as animal centre managers, aquarists and wildlife conservationists, whilst many have gone on to undertake a Foundation Degree in Animal Conservation.

If animal care is where your heart is, we have everything you need to achieve your career ambitions.



There are expected to be **5.4%** more Animal Care Worker jobs in 2027.¹



The average annual salary for an Animal Welfare Officer is **£26,093**²

¹ Career Pilot

² Indeed.com



Future Careers...

Offering a wide range of exciting career opportunities in this growing sector:

- Animal Conservationist
- Animal Technician
- Aquarist
- Dog Trainer
- Marine Biologist
- Zookeeper



ANIMAL CARE

Level 2 | Duration: 1 year

 North Devon | FTB456

This T Level Foundation Year Programme has been developed to help you gain the knowledge, skills and work experience needed to help you progress onto your chosen T Level.

You will gain the following

- Technical knowledge and practical skills
- Industry-based work experience
- Relevant English, maths and digital skills
- Focused individual support and personal development

The course encompasses the Technical Certificate in Animal Care.

You will cover the following modules:

- Animal health and welfare maintenance
- Animal feeding and accommodation
- Animal behaviour and handling
- Working in the animal care industry
- Health and safety for land-based industries

ENTRY REQUIREMENTS

You must hold four GCSEs at grade 3 or above, preferably including Maths and English.

PROGRESSION

Upon successful completion of this course, you will be able to progress onto the T Level in Agriculture, Environment & Animal Care.

ANIMAL CARE & MANAGEMENT T LEVEL

Level 3 | Duration: 2 years

 North Devon | FTB633

T Levels ensure you meet the needs of industry by combining classroom theory, practical learning and industry placement.

This course is suitable for anyone that wants to develop their skills in animal care.

You will study the following units:

- Animal health
- Animal behaviour
- Animal welfare
- Sustainability
- The principles of biosecurity
- Ethical principles
- Supply chain and stock management
- Business and enterprise skills

You will study the occupational specialism of Animal Management in your second year.

You will also undertake a 315-hour (minimum) industry placement.

ENTRY REQUIREMENTS

You must hold at least five GCSEs at grade 4, including Maths and English Language. You will also be expected to have at least one pass in a science subject.

PROGRESSION

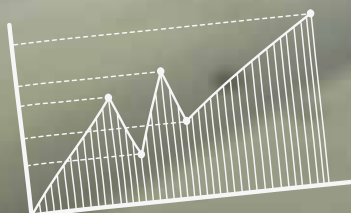
Successful completion of this course will enable you to work within animal care settings (such as conservation organisations, kennels and catteries, animal charities and animal training) or progress onto a university-level course.



BUSINESS & MANAGEMENT



discover more!



FIND OUT MORE ONLINE
petroc.ac.uk





"The business course teaches you good life lessons that are needed in day-to-day life. Work experience helps with confidence and allows you to gain more knowledge of the working world."

Coral, Business Level 3 (Former student at Branton Academy)



WHAT CAN I EXPECT?

At Petroc, we'll provide you with the knowledge and experience to step into a business, development or management role in almost any industry or sector. Our courses will challenge, enlighten and inspire you.

Whether you see yourself as a project manager, personal assistant, or entrepreneur, as the head of an established multinational organisation, or the head of your own organisation, our business and management courses will give you the skills you need to succeed.

With a wide range of industry experience behind them, our experienced lecturers will offer you excellent knowledge and guidance. You will also have the opportunity to hear from and speak with an incredible group of guest speakers and entrepreneurs who regularly mentor and support our students.

Work experience, educational visits and networking events will further develop your knowledge, deepen your understanding of the intricacies of the business world, and provide you with valuable opportunities to interact with local business employees.

Even if you are undecided about the direction you want to progress in, the skills learnt on a business and management course are highly transferable, meaning you will always be a great candidate for any future employment.

Our courses will help you take the first step towards your ultimate career goal, whatever your ambition.



In 2023, there were **5.51 million** small businesses in the UK, accounting for 99.2% of the total business population.¹



The average salary for a Human Resources Manager is **£43,038**²

¹ money.co.uk

² Indeed.com



Future Careers...

Giving you the skills you need to succeed, whatever your ambition:

- Accountant
- Account Manager
- Data Analyst
- Marketing Director
- Marketing Executive
- Personal Assistant



BUSINESS & ADMINISTRATION

Level 2 | Duration: 1 year

📍 North Devon | FTB484

This T Level Foundation Year Programme has been developed to help you gain the knowledge, skills and work experience needed to help you progress onto your chosen T Level.

You will gain the following:

- Technical knowledge and practical skills
- Industry-based work experience
- Relevant English, maths and digital skills
- Focused individual support and personal development

The course encompasses the Extended Certificate in Business. You will also progress on to develop higher level skills.

You will study the following modules:

- Enterprise in the business world
- Finance for business
- Principles of marketing
- Introducing project management
- Effective business communication

ENTRY REQUIREMENTS

You must hold four GCSEs at grade 3 or above, including Maths and English.

PROGRESSION

Upon successful completion of this programme, you will be able to progress onto a business-related T Level.

LEGAL T LEVEL

Level 3 | Duration: 2 years

📍 North Devon | FTB574

T Levels ensure you meet the needs of industry by combining classroom theory, practical learning and industry placement.

During this course, you will learn the knowledge and skills needed for entry to a range of legal occupations.

You will study the following units:

- Regulation
- Professionalism and ethics
- The business environment
- Security and risk
- The fundamentals of law
- Professional services
- Research skills

You will study Legal Services Assistant - Crime, Criminal Justice & Social Welfare as your occupational specialism in your second year.

You will also be required to undertake a 315-hour (minimum) industry placement.

ENTRY REQUIREMENTS

You must hold at least five GCSEs at grade 4 or above, including GCSE Maths and English Language.

PROGRESSION

Successful completion of this qualification will open up a huge range of possible careers such as paralegal, legal secretary, or usher. It will give you an advantage when applying for a job or when progressing to further study.

MANAGEMENT & ADMINISTRATION T LEVEL

Level 3 | Duration: 2 years

📍 North Devon | FTB389

T Levels ensure you meet the needs of industry by combining classroom theory, practical learning and industry placement.

You will study the following units:

- Business context
- People
- Quality and compliance
- Finance
- Policies and procedures
- Project management
- Business behaviours

You will study Business Support as your occupational specialism in your second year.

You will also be required to undertake a 315-hour (minimum) industry placement over the two-year programme.

ENTRY REQUIREMENTS

You must hold at least five GCSEs at grade 4 or above, including GCSE Maths and English Language.

PROGRESSION

Successful completion of this qualification will prepare you to enter the sector through employment or as an apprentice. Alternatively, you may wish to progress onto higher education.

BUSINESS & MANAGEMENT APPRENTICESHIPS

We offer a range of Level 2 and Level 3 apprenticeships relating to Business and Management.

An apprenticeship blends classroom learning with on-the-job training, meaning you can earn while you learn. You will usually spend four days in the workplace as a paid employee, with one day in the classroom where you will reinforce and further develop your skills and workplace learnings.

During your apprenticeship, you will be expected to undertake a range of predefined knowledge, skills and behaviours which will relate to your chosen business and management programme.

Depending on the level, an apprenticeship lasts between one and two years and can start at various points in the year.

ENTRY REQUIREMENTS

Each apprenticeship will have its own specific entry requirements; you can find out more on our website.

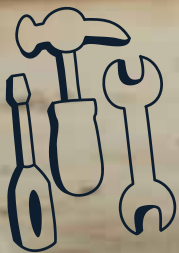
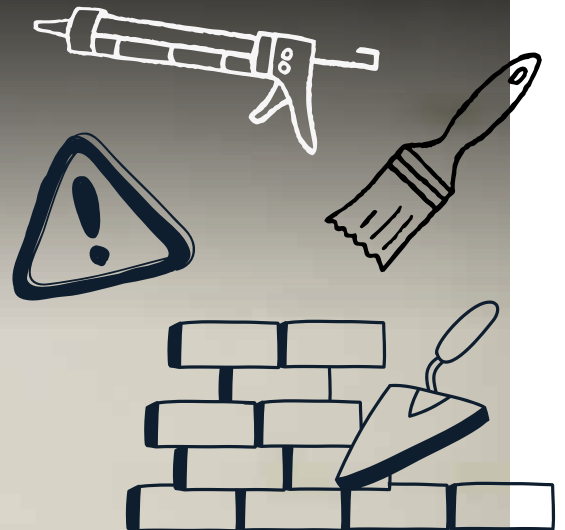
PROGRESSION

An apprenticeship is a great pathway to a rewarding and successful career, or can be a stepping stone to a higher level programme.

You can find out more about our apprenticeships at petroc.ac.uk/apprenticeships



CONSTRUCTION



FIND OUT MORE ONLINE
petroc.ac.uk



discover more!



"This course was quite challenging at first but is 100% worth it in the end."

Theo, Construction Level 1 (Former student at Tiverton High School)



WHAT CAN I EXPECT?

Highly qualified and industry-experienced construction workers are in high demand. If you have a passion for building, creating or designing, Petroc has a construction course for you!

The construction industry incorporates a hugely diverse range of roles from trowel trades through to architecture and design. These are valuable and in-demand skills and our teaching structure will help you find the right career pathway to suit your ambitions.

On campus, we have a range of workshop spaces for each of our trade courses, all fully equipped with cutting-edge tools, machinery and environmental technology. We are embracing the future of construction with a keen eye on green technology and incorporating the retrofit concept for the future.

Throughout your studies, you will develop important hands-on, technical and practical skills from our highly skilled lecturers who have a wealth of industry experience. They will support and guide you throughout your journey and help you achieve the highest standards in your chosen area.

Whether your ambition is to start your own business locally or work for a larger multinational contractor, the skills you learn at Petroc will provide you with a career for the future.



225,000 additional workers will be required to meet UK construction demand by 2027¹



The average annual salary for a Carpenter is **£45,575**²

¹ citb.co.uk

² Indeed.com



Future Careers...

Giving you the skills you need to succeed, whatever your ambition:

- Building Surveyor
- Construction Manager
- Construction Site Worker
- Estates Manager
- Quantity Surveyor
- Site Engineer



BRICKLAYING

Level 1 | Duration: 1 year

📍 North Devon | FTB118

📍 Tiverton | FTT074

This programme provides an introduction to the bricklaying industry. It has been crafted to provide you with core knowledge of the industry as well as maximum exposure to the skills you will experience at work or within further study at Petroc.

The course delivers the Level 1 Certificate in Construction Skills (Bricklaying).

You will study the following units:

- Introduction to the construction industry
- Introduction to health and safety
- Introduction to brick and block walling

You will also undertake a tutorial programme, gain support with developing your study skills, and have the opportunity to improve your GCSE Maths and English grades.

ENTRY REQUIREMENTS

You must hold four GCSEs at grade 2, preferably including Maths and English. If you do not have a GCSE grade 4 in Maths and/or English, you'll continue studying these subjects alongside your course.

PROGRESSION

Upon successful completion of this course, you can progress onto one of our Level 2 construction courses or undertake an apprenticeship.

CARPENTRY & JOINERY

Level 1 | Duration: 1 year

📍 North Devon | FTB123

📍 Tiverton | FTT080

This programme provides an introduction to the carpentry industry. It has been crafted to provide you with core knowledge of the industry as well as maximum exposure to the skills you will experience at work or within further study at Petroc.

The course encompasses a Level 1 qualification in carpentry and joinery.

You will study the following units:

- Introduction to the construction industry building principles
- Introduction to health and safety
- Introduction to carpentry and joinery
- Joints
- Timber technology
- Methods of frame construction

You will also undertake a tutorial programme, gain support with developing your study skills, and have the opportunity to improve your GCSE Maths and English grades.

ENTRY REQUIREMENTS

You must hold four GCSEs at grade 2 or above, preferably including Maths and English. If you do not have a GCSE grade 4 in Maths and/or English, you'll continue studying these subjects alongside your course.

PROGRESSION

Upon successful completion of this course, you can progress onto a Level 2 construction course or undertake an apprenticeship.

PAINTING & DECORATING

Level 1 | Duration: 1 year

📍 North Devon | FTB063

This programme provides an introduction to the painting and decorating industry. It has been crafted to provide you with core knowledge of the industry as well as maximum exposure to the skills you will experience at work or within further study at Petroc.

The course delivers the Level 1 Certificate in Construction Skills (Painting & Decorating).

You will study the following units:

- Health and safety
- Painting techniques
- Decorative effects
- Applying wallpaper
- Painting skirtings and panel doors

You will also undertake a tutorial programme, gain support with developing your study skills, and have the opportunity to improve your GCSE Maths and English grades.

ENTRY REQUIREMENTS

You must hold four GCSEs at grade 2 or above, preferably including Maths and English. If you do not have a GCSE grade 4 in Maths and/or English, you'll continue studying these subjects alongside your course.

PROGRESSION

Upon successful completion of this course, you can progress onto a Level 2 construction course or undertake an apprenticeship.



BRICKLAYING

Level 2 | Duration: 1 year

📍 North Devon | FTB642

📍 Tiverton | FTT312

This Level 2 Diploma in Bricklaying is aimed at anyone looking to work in the construction industry - specifically as a craftsperson in bricklaying.

A bricklayer has the skills and knowledge to build or repair walls in accordance with construction plans. They may also build or refurbish arches or other structures, therefore they play an important part of any construction team.

You will study the following modules:

- Principles of construction
- Building cavity walls
- Building solid walls and piers
- Constructing basic arches
- Setting outbuildings

You will also undertake structured work experience or work placements within a relevant business.

ENTRY REQUIREMENTS

You must hold four GCSEs at grade 3 or above, preferably including GCSE Maths and English.

PROGRESSION

This course is aimed at anyone interested in going on to study a Level 3 construction course or apprenticeship.

CARPENTRY

Level 2 | Duration: 1 year

📍 North Devon | FTB641

📍 Tiverton | FTT313

This Level 2 Diploma in Carpentry will enable you to study theoretical aspects of carpentry and apply them to practical tasks.

You will study the following modules:

- The principles of construction
- Structural carpentry
- Non-structural carpentry prior to plastering
- Non-structural carpentry following plastering
- Timber technology and the use of circular saws

You will also undertake structured work experience or work placements within a suitable business.

ENTRY REQUIREMENTS

You must hold four GCSEs at grade 3 or above, preferably including GCSE Maths and English.

PROGRESSION

This course is aimed at anyone interested in going on to study a Level 3 construction course or apprenticeship.

CONSTRUCTION (DESIGN, SURVEYING & PLANNING) - ARCHITECTURE T LEVEL

Level 3 | Duration: 2 years

📍 North Devon | FTB370

T Levels ensure you meet the needs of industry by combining classroom theory, practical learning and industry placement.

You will study the following units:

- Construction principles
- Construction design
- Tendering and estimating
- Health and safety
- Construction technology
- Surveying
- Graphical detailing
- Building regulations
- Law
- Commercial business
- Science
- Sustainability
- Construction maths

You will study Surveying and Design for Construction and the Built Environment as your occupational specialism in your second year.

You will also be required to undertake a 315-hour (minimum) industry placement over the two-year programme.

ENTRY REQUIREMENTS

You must hold at least five GCSEs at grade 5 or above. This must include grade 5 in English, maths and science.

PROGRESSION

Successful completion of this qualification will give you an advantage when applying for a job in construction or when progressing to higher-level study.

CONSTRUCTION APPRENTICESHIPS

We offer a Bricklayer Apprenticeship (Level 2), Carpentry and Joinery (Site Carpentry) Apprenticeship (Level 2), and Craft Carpentry and Joinery Apprenticeship (Level 3).

An apprenticeship blends classroom learning with on-the-job training, meaning you can earn while you learn. You will usually spend four days in the workplace as a paid employee, with one day in the classroom where you will reinforce and further develop your skills and workplace learnings.

During your apprenticeship, you will be expected to undertake a range of predefined knowledge, skills and behaviours which will relate to your chosen programme.

Depending on the level, an apprenticeship lasts between one and two years and can start at various points in the year.

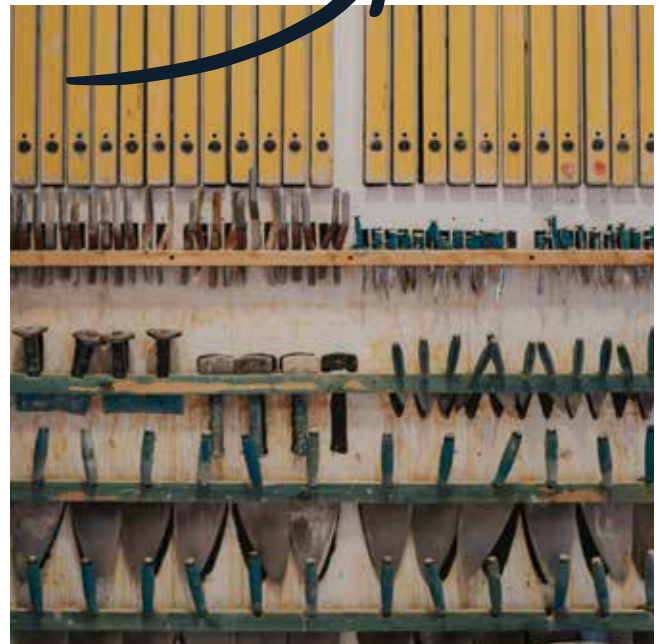
ENTRY REQUIREMENTS

Each apprenticeship will have its own specific entry requirements; you can find out more on our website.

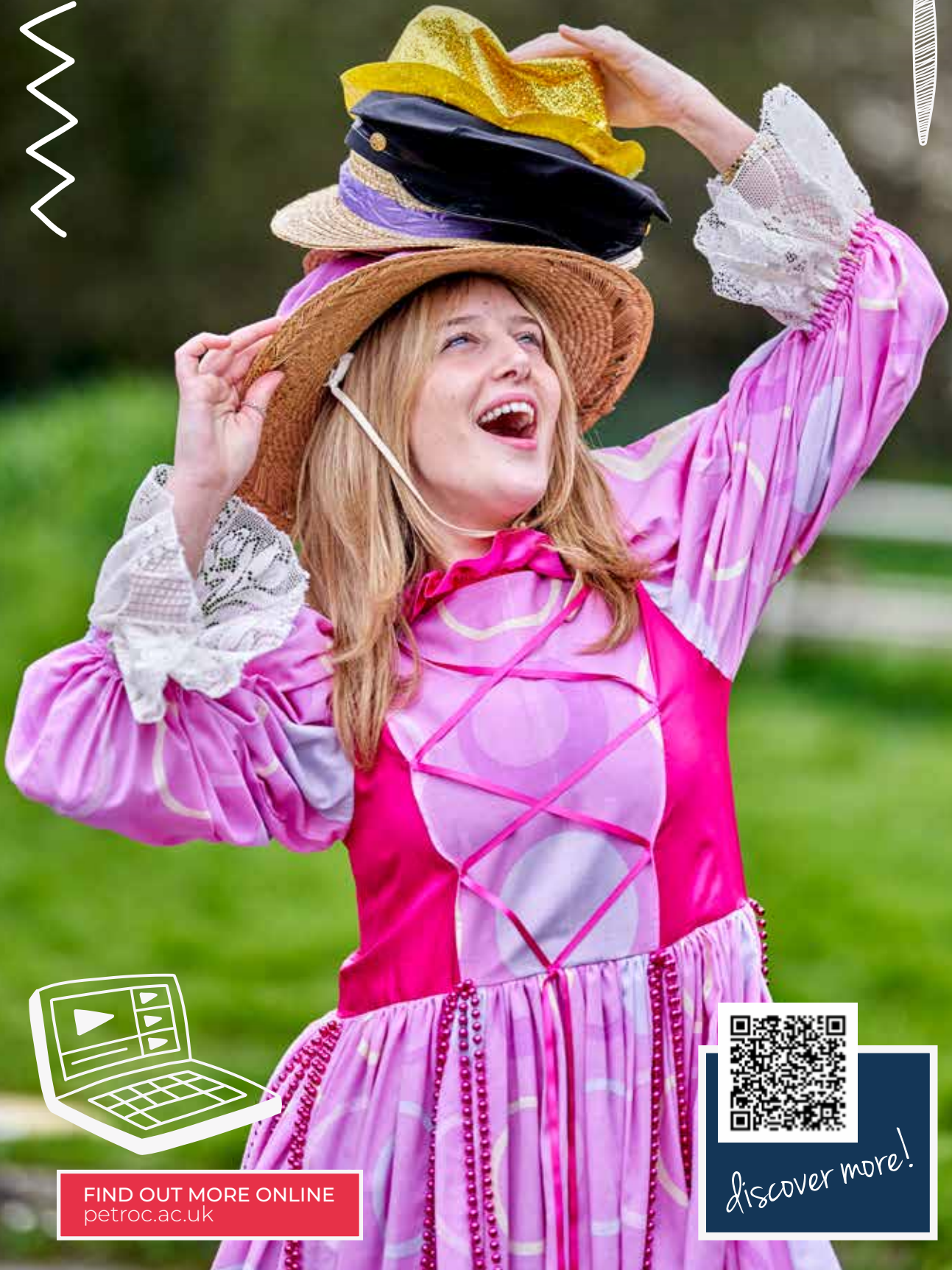
PROGRESSION

An apprenticeship is a great pathway to a rewarding and successful career, or can be a stepping stone to a higher level programme.

You can find out more about our apprenticeships at petroc.ac.uk/apprenticeships



CREATIVE INDUSTRIES



FIND OUT MORE ONLINE
petroc.ac.uk



discover more!



"I have stepped out of my comfort zone and so my confidence has been boosted and I have learnt brand new things that I never thought I would."

Joel, Performing Arts Level 3, (Former Park Community School student)



WHAT CAN I EXPECT?

Are you passionate about performance, creativity and communicating amazing new ideas?

Employing millions of innovative and groundbreaking individuals worldwide, the creative industries include everything from art, media and music to performing arts, fashion and game design. At Petroc, we offer you the perfect platform to hone your talent, explore your creativity, and shine!

For our music and performing arts students, we provide full access to a live performance venue, spacious dance studio, rehearsal studios, sound-proofed rehearsal booths, high-spec recording studios and IT suites. Throughout the year, you will also have the opportunity to showcase your skills in various productions both on campus and at local theatres.

Creative media and art students benefit from spacious and inspiring studios housing a variety of high-spec kit including 3D printers, Apple Macs, editing suites, textile areas, screen printers, a podcast studio, and a photography studio - providing the opportunity to explore a range of creative pursuits and activities.



The UK has almost **2.3m** creative industry jobs¹

We actively encourage collaboration with students from different creative disciplines, and our expert lecturers, with their extensive experience and knowledge, are committed to supporting you every step of the way.

We also offer a suite of Creative Academies where you can continue to develop your creativity alongside your main course, even if a full-time creative course is not for you.

Petroc's Creative Industries students consistently progress to their first-choice universities, with many performing arts alumni securing spots in prestigious, internationally renowned schools and conservatoires.

We take pride in our students' success across the creative industries, from performers to technicians, composers to designers, and film-makers to fine artists.

If you want to bring your talent to life, Petroc will help you develop your skills ensuring you stand out in the crowd!



The average salary for a Stage Manager is **£39,456**²

¹ Prospects

² Indeed.com



Future Careers...

Exiting and innovative careers in the palm of your hand:

- Actor
- Choreographer
- Illustrator
- Musical Theatre Performer
- Music Producer
- Photographer



ART AND DESIGN

Level 2 | Duration: 1 year

 North Devon | FTB473

This Diploma in Art & Design has been developed with leading businesses to help you gain the knowledge, skills, and work experience that you will need for your next step in this exciting field.

During the course, you will study the following units:

- Introduction to materials, processes and technical skills in art and design
- Introduction to contextual research in art and design
- Introduction to drawing skills
- Introduction to communication skills in art and design
- Solving 2D creative problems
- Solving 3D creative problems
- Solving time-based creative problems
- Developing and producing a personal project in art and design

ENTRY REQUIREMENTS

You must hold four GCSEs at grade 3, including English, maths and art.

PROGRESSION

Upon successful completion of this course, you can progress onto one of our Level 3 Art and Design courses.

CREATIVE MEDIA PRODUCTION & TECHNOLOGY

Level 2 | Duration: 1 year

 North Devon | FTB475

This qualification will enable you to gain a broad understanding of the discipline and prepare you for the reality of the sector and the progression paths and careers available.

During the course, you will study the following units:

- Creative media methods and skills
- Production techniques
- Understanding an audience
- Audio production and technology
- Visual production and technology
- Interactive media production and technology
- Personal project and presentation

Units are combined into larger projects to simulate industry briefs and will include graphic design, film-making, photography, game development, and sound design.

ENTRY REQUIREMENTS

You must hold four GCSEs at grade 3, preferably including GCSE Maths and English. If you have not completed a creative subject at school, you will need to provide a portfolio of creative work at interview.

PROGRESSION

Upon successful completion of this course, you can progress onto our Level 3 Media course.

ART, DESIGN & COMMUNICATION

Level 3 | Duration: 2 years

 North Devon | FTB047

If you love art and think you would like to make a career out of it, then this Extended Diploma course is for you. In a dedicated studio space, you'll experiment with materials and techniques from disciplines as diverse as drawing, painting, fashion, animation, printing, graphics, illustration, photography, textiles and 3D.

During the course, you will study the following units:

- The creative process
- Developing creative practice
- Responding to a brief
- Researching a specialist industry practice
- Technical skills development
- Specialist creative outcome

You will also be required to undertake work experience.

ENTRY REQUIREMENTS

You must hold at least five GCSEs at grade 4 or above, including GCSE English Language, maths and an art & design course. You will also be asked to provide a portfolio of recent artwork.

PROGRESSION

On successful completion of this course, you could progress on to a specialist degree, freelance work, or an apprenticeship.



CREATIVE MEDIA PRODUCTION & TECHNOLOGY

Level 3 | Duration: 2 years

📍 North Devon | FTB268

This course could set you on the pathway to a dream job in film-making, photography, editing, social media, content creation, podcasting, branding, animation, video game design, graphics design, VFX or interactive media.

The units on this qualification have been developed to provide you with the flexibility to either explore multiple practical disciplines or develop and focus on one discipline throughout the entire two years. These include the following units:

- Media processes and technical skills
- Design and research skills
- Critical and contextual awareness
- Audio production and technology
- Visual production and technology
- Interactive media production and technology
- Creative media production

ENTRY REQUIREMENTS

You must hold at least five GCSEs at grade 4 or above, including GCSE Maths and English Language. You will also be asked to provide a small portfolio of recent creative media/artistic products.

PROGRESSION

Upon successful completion of this course, you might wish to progress to university, set up a freelance production company or move directly into employment.

FOUNDATION DIPLOMA IN ART & DESIGN

Level 3 | Duration: 2 years

📍 North Devon | FTB046

The UAL Foundation Diploma in Art and Design will help bolster your emerging portfolio and get you ready for Higher Education applications.

You will be introduced to concepts and artists that will inspire your creative journey and challenge the way you create, think and write about art.

The course will include the following topics:

- Drawing
- Painting
- Fashion
- Animation
- Printing
- Graphics
- Illustration
- Photography
- Textiles
- 3D

ENTRY REQUIREMENTS

You will be required to have completed A Level Art and Design; BTEC Diploma in Art and Design, Photography or Graphic Design; or demonstrate your commitment and ability with a portfolio of work.

PROGRESSION

Upon successful completion of this course, you can progress onto a specialist university course. Alternatively, you may wish to move directly into a career within the creative industries.

MUSIC PERFORMANCE & PRODUCTION

Level 3 | Duration: 2 years

📍 North Devon | FTB629

Are you a music enthusiast looking to take your passion to the next level?

This UAL Diploma and Extended Diploma in Music Performance and Production will provide you with a range of skills to help take you forward in your future career.

During the course, you will study the following units:

- Rehearsal skills and techniques for live performances
- Advanced skills like solo performance, live sound and sound design
- Music theory and composition skills for creating original music
- Music production skills for recording and sequencing
- Critical listening skills to analyse and evaluate a range of music
- Practical methods and skills for creative production

ENTRY REQUIREMENTS

You must hold at least five GCSEs at grade 4 or above, including GCSE Maths and English Language.

PROGRESSION

Upon successful completion of this course, you could further your studies at university, or move into employment as a session musician, sound engineer or composer.

PERFORMING & PRODUCTION ARTS

Level 3 | Duration: 2 years

📍 North Devon | FTB630

This Extended Diploma in Performing & Production Arts will give you a sound understanding of a range of disciplines, including acting, dance, musical theatre and production.

You will build your performing skills through taught classes and through creating and performing work in various venues.

During the course, you will study the following topics:

- Voice
- Improvisation
- Devising
- Various dance styles
- Singing
- Acting skills
- Audition skills
- Production work

ENTRY REQUIREMENTS

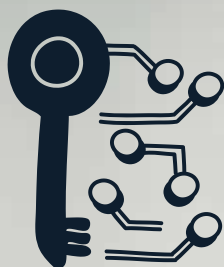
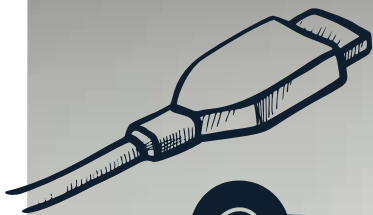
You must hold at least five GCSEs at grade 4 or above, including GCSE Maths and English Language.

PROGRESSION

Upon successful completion of this course, you might wish to progress onto higher education or straight into employment in the wide and varied performing arts industry.



DIGITAL & TECHNOLOGIES



discover more!

FIND OUT MORE ONLINE
petroc.ac.uk

SOUTH WEST
INSTITUTE OF
TECHNOLOGY



"Petroc is a fantastic option for students looking for an IT course since it provides high-quality instruction, modern facilities, and a helpful studying atmosphere."

Joshua, Digital Level 2 (Former student at Lampard Community School)



WHAT CAN I EXPECT?

Rapidly expanding and constantly evolving, the digital technology sector is innovative, bold and incredibly exciting, offering a vast array of career choices with the potential for six-figure salaries. The sky truly is the limit!

The demand for IT professionals and their skills is consistently high, and the knowledge gained through our courses opens doors to opportunities across almost every industry in a growing number of exciting, varied and well-paid roles.

Using an up-to-date range of industry-standard hardware and software, you will gain hands-on experience in web and desktop application development, networking, programming, gaming, and more!

Our expert lecturers all have a wealth of experience in the commercial sector and will support your learning and career ambitions through the practical and theoretical structure of taught lessons and projects.

Upon completion of our IT courses, Petroc alumni have achieved great success! Some have started their own businesses, whilst others have built careers in areas such as software development, game design, IT support, website building and mobile applications. Many have also progressed on to a degree-level IT course, opening doors to even greater opportunities.



As of 2022, the Digital Sector made up **5.6%** of total UK-filled jobs.¹



The average salary for a Digital Analyst is **£38,665**²

¹ gov.uk

² Indeed.com



Future Careers...

Giving you the skills you need to succeed, whatever your ambition:

- Cyber Security Analyst
- Database Administrator
- Games Developer
- IT Consultant
- Software Engineer
- Web Developer



DIGITAL & TECHNOLOGIES

Level 2 | Duration: 1 year

📍 North Devon | FTB489

This T Level Foundation Year Programme has been developed to help you gain the knowledge, skills and work experience needed to help you progress onto your chosen T Level.

You can expect to gain the following:

- Technical knowledge and practical skills
- Industry-based work experience
- Relevant English, maths and digital skills
- Focused individual support and personal development

The course encompasses the Certificate in Cyber Security.

You will study the following units:

- Introduction to cyber security
- Terminology used in cyber security
- Legal and ethical aspects of cyber security
- Common threats to cyber security
- Methods of maintaining cyber security
- Working with others in cyber security
- Principles of coding
- Coding design principles
- Processes and practice of coding

ENTRY REQUIREMENTS

You must hold four GCSEs at grade 3 or above, including Maths and English.

PROGRESSION

Upon successful completion of this course, you can go on to study one of our Level 3 courses.

DIGITAL PRODUCTION, DESIGN AND DEVELOPMENT T LEVEL

Level 3 | Duration: 2 years

📍 North Devon | FTB366

T Levels ensure you meet the needs of industry by combining classroom theory, practical learning and industry placement.

You will study the following units:

- Problem-solving
- Programming
- Emerging issues and the impact of digital
- Legislation and regulatory requirements
- Business context
- Data
- Digital environments
- Security

You will study Design and Development as your occupational specialism in your second year.

You will also be required to undertake a 315-hour (minimum) industry placement over the two-year programme.

ENTRY REQUIREMENTS

You must hold at least five GCSEs at grade 4 or above. This must include grade 5 in Maths and English Language.

PROGRESSION

On successful completion of this qualification, you could move into a huge range of possible careers or progress to further study.

SOUTH WEST

I	N	S	T	I	T	U	T	E	OF
T	E	C	H	N	O	L	O	G	Y



EDUCATION & CHILDCARE



discover more!

ABC

FIND OUT MORE ONLINE
petroc.ac.uk





"It's a very fun course where you will learn a lot of the skills that you need to become a teacher."

Ruby, Assisting Teaching Level 3 (Former Braunton Academy student)



WHAT CAN I EXPECT?

If nurturing, guiding or teaching the next generation is where you see yourself, then Petroc can help you develop your passion for education or childcare on one of our outstanding courses.

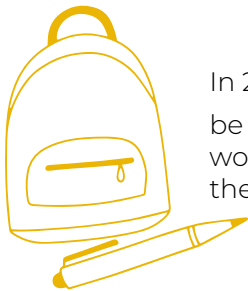
Perfectly suited to those with caring and patient natures, education and early years childcare roles are hugely important and very rewarding. Whether your dream job is working in a primary school, a nursery setting, or a SEND school, we can give you the skills needed to transform your career goals into reality.

We have a team of dedicated, expert lecturers with a wealth of experience in working with children and young people. They will share their wisdom and experience with you as you learn the unique and wide-ranging skills you need to succeed in these roles.

You will practise your skills in a 'true to life' training room at our North Devon Campus, and undertake fantastic work experience opportunities where you will learn to support the children in your care.

There is a vast and varied number of career and professional pathways available to students who complete courses in education and childcare which include teachers, teaching assistants, early years practitioners, professional nannies and working with children with additional needs.

At Petroc, we also offer a range of childhood-related higher education courses to help you progress even further towards your perfect career.



In 2023, there were estimated to be approx. **623,500** people working in childcare professions in the UK¹



The average salary for a Primary School Teacher is **£28,800**²

¹ Statista ² Indeed.com



Future Careers...

Offering a huge variety of career and professional pathways:

- Childminder
- Early Years Play Leader
- Forest School Leader
- Nursery Manager
- Primary School Teacher
- Secondary School Teacher



HEALTH & EDUCATION

Level 1 | Duration: 1 year

📍 North Devon | FTB319

📍 Tiverton | FTT315

This programme provides an introduction to health and social care and early years education.

It has been crafted to provide you with core knowledge of the industry as well as maximum exposure to the skills you will experience at work or within further study at Petroc.

The course delivers the Level 1 Certificate in Introduction to Health, Social Care & Children & Young People's Settings.

You will study the following units:

- Health and safety when with young children
- Growth and development of young children
- Communication
- Principles and values

You will also undertake a tutorial programme, gain support with developing your study skills, and have the opportunity to improve your GCSE Maths and English grades.

ENTRY REQUIREMENTS

You must hold four GCSEs at grade 2, preferably including Maths and English. If you do not have a GCSE grade 4 in Maths and/or English, you'll continue studying these subjects alongside your course.

PROGRESSION

Upon successful completion of this course, you can progress onto a Level 2 course in Health & Social Care or Education & Childcare, or an apprenticeship.

EDUCATION & EARLY YEARS

Level 2 | Duration: 1 year

📍 North Devon | FTB472

This T Level Foundation Year Programme has been developed to help you gain the knowledge, skills and work experience needed to help you progress onto your chosen T Level.

You will gain the following:

- Technical knowledge and practical skills
- Industry-based work experience
- Relevant English, maths and digital skills
- Focused individual support and personal development

The course will provide you with these essential skills:

- Plan play, learning or educational activities.
- Prepare environments for play, learning and educational activities.
- Observe learning and development within a specific age range.

Each week, you will spend three days in college and one day on work placement.

ENTRY REQUIREMENTS

You must hold four GCSEs at grade 3 or above, including GCSE Maths and English.

PROGRESSION

Upon successful completion of this course, you can progress onto one of our Education T Levels. Alternatively, you may want to undertake another Level 3 course or an apprenticeship.

SUPPORTING TEACHING & LEARNING (TA)

Level 2 | Duration: 1 year

📍 North Devon | FTB109

The Certificate in Supporting Teaching and Learning (Teaching Assistant) has been designed to support your learning and help you discover and evaluate your natural abilities and skills in the classroom.

During the course, you will study the following modules:

- Understanding schools and colleges as organisations
- Understanding children and young people's development
- Safeguarding
- Equality, diversity and inclusion
- Maintaining relationships with children and young people
- Supporting health and safety
- Supporting positive behaviour
- Understanding play and leisure

You will also be required to undertake a minimum of two days per week of work experience.

ENTRY REQUIREMENTS

You must hold four GCSEs at grade 3 or above, preferably including GCSE Maths and English. You will also need a clear Disclosure and Barring Service (DBS).

You need to be at least 17 years of age to join this programme.

PROGRESSION

After completing this qualification, you will be able to move into employment or progress on to a Level 3 course.



EDUCATION & CHILDCARE (EARLY YEARS) T LEVEL

Level 3 | Duration: 2 years

📍 North Devon | FTB470

T Levels ensure you meet the needs of industry by combining classroom theory, practical learning and industry placement.

This T Level focuses on children under the age of five, and combines the following core units with practical application while working in a setting in the community:

- Child development
- Safeguarding
- Observation and assessment
- Parents, families and carers

You will study Early Years Educator as your occupational specialism in your second year.

You will also be required to undertake at least 750 hours of placement over the two-year programme in a relevant setting.

ENTRY REQUIREMENTS

You must hold at least five GCSEs at grade 4 or above, including GCSE Maths and English Language. You will also need an enhanced DBS check, with no disclosures.

PROGRESSION

Once completed, this qualification will open the door to a huge range of possible careers in this sector, or you could progress to further study.

EDUCATION & CHILDCARE (TEACHING) T LEVEL

Level 3 | Duration: 2 years

📍 North Devon | FTB367

T Levels ensure you meet the needs of industry by combining classroom theory, practical learning and industry placement.

You will study the following units:

- Special Educational Needs and Disability (SEND)
- Supporting education
- Safeguarding, health and safety, and wellbeing
- English as an Additional Language (EAL)
- Child development

You will study Teaching as your occupational specialism in your second year.

You will also be required to undertake a 315-hour (minimum) industry placement over the two-year programme in a relevant setting.

ENTRY REQUIREMENTS

You must hold at least five GCSEs at grade 4 or above, including GCSE Maths and English Language. If you wish to pursue a career in Primary Teaching, you will require GCSE Science at Grade 4 or above. You will also need an enhanced DBS check, with no disclosures.

PROGRESSION

Once completed, this qualification will open the door to a huge range of possible careers in this sector, or you could progress to further study in teaching.

SUPPORT FOR TEACHING & LEARNING (TEACHING ASSISTANT)

Level 3 | Duration: 1 year

📍 North Devon | FTB110

This qualification will provide you with an in-depth understanding of the knowledge and skills needed when working with children and young people in school and college environments.

You will study the following units:

- Understanding child and young person development
- Understanding safeguarding
- Schools as organisations
- Supporting English and Maths
- Promoting positive behaviour
- Supporting children and young people's health
- Supporting learning activities
- Supporting children and young people during transitions
- Support with special educational needs and disabilities
- Support with speech and language

You are also required to undertake a minimum of two days per week of work experience.

ENTRY REQUIREMENTS

You must hold at least five GCSEs at grade 4 or above, including GCSE Maths and English Language. You will also need a clear Disclosure and Barring Service (DBS) check. You need to be at least 17 years of age to join this programme.

PROGRESSION

Upon successful completion of this course, you could become a practitioner in schools and colleges, or undertake a degree in teaching and learning.

EDUCATION & CHILDCARE APPRENTICESHIPS

We offer an Early Years Educator Apprenticeship (Level 3).

An apprenticeship blends classroom learning with on-the-job training, meaning you can earn while you learn. You will usually spend four days in the workplace as a paid employee, with one day in the classroom where you will reinforce and further develop your skills and workplace learnings.

During your apprenticeship, you will be expected to undertake a range of predefined knowledge, skills and behaviours which will relate to your chosen programme.

Depending on the level, an apprenticeship lasts between one and two years and can start at various points in the year.

ENTRY REQUIREMENTS

Each apprenticeship will have its own specific entry requirements; you can find out more on our website.

PROGRESSION

An apprenticeship is a great pathway to a rewarding and successful career, or can be a stepping stone to a higher level programme.

You can find out more about our apprenticeships at petroc.ac.uk/apprenticeships



ELECTRICAL & PLUMBING



discover more!



FIND OUT MORE ONLINE
petroc.ac.uk

"The practical assessments are really enjoyable as this allows you to become more experienced with the tools and lets you get a real taste of the trades."

Mitchell, Plumbing and Electrical Level 1 (Former student of Pilton Community College)

WHAT CAN I EXPECT?

Good electricians and plumbers are like gold dust and will always be in demand. They are the trades that have a reputation for providing highly competent skilled operators.

The skill sets that you will learn in these courses will open doors to a wide spectrum of career opportunities for you. You might set up your own company, be employed in-house in virtually any industry sector worldwide, or continue the local traditions of working in a family business and passing trade skills through generations of young tradespersons for the benefit of the local industry.

When you study on one of our electrical or plumbing courses, you'll gain the skills and experience to reach the top of your chosen field. You'll learn the requirements and technical needs of differing jobs and work settings, how to test and safely install fittings, and understand all the strict regulations for health, safety and maintenance.

At Petroc, we have state-of-the-art plumbing and electrical workshops, built to the highest standards and fully equipped with the latest testing and commissioning equipment. Learning and developing your trade in this environment will set you apart and establish your abilities as a dedicated industry professional.

Our team of highly-skilled and experienced lecturers will guide and support you every step of the way, to ensure you start your chosen career with knowledge and confidence.

Whether you'd like to run your own business or prefer the idea of joining an established company, the experience you gain from our electrical and plumbing courses will provide you with the skills and knowledge to forge a successful career.



Demand for electricians and plumbers is set to soar, with a new report revealing an additional **100,000** electricians and **70,000** plumbers are needed by 2032.¹



The average salary for a Plumber is **£37,255**²

¹ professional-electrician.com and ciphe.org.uk ² Indeed.com



Future Careers...

Forge a successful career in this in-demand sector:

- Air Conditioning Engineer
- Building Services Engineer
- Electrician
- Electrical Engineer
- Plumber
- Solar Panel Electrician



ELECTRICAL INSTALLATION

Level 2 | Duration: 1 year

📍 North Devon | FTB474

This one-year Diploma in Electrical Installation course is suitable for anyone who wants to work as an electrician in the building services industry.

It has been designed to deliver the skills needed to progress onto an apprenticeship or into employment, and to becoming a competent electrician.

The qualification will help you gain an understanding of the skills required within the electrotechnical sector and you will cover the following topics:

- Scientific principles
- Installation of wiring systems and enclosures
- Electrical installations technology

ENTRY REQUIREMENTS

You must hold four GCSEs at grade 3 or above, including GCSE Maths and English at grade 4.

PROGRESSION

This course is aimed at anyone interested in going on to study a Level 3 construction course or an Electrical Apprenticeship.

PLUMBING

Level 2 | Duration: 1 year

📍 North Devon | FTB465

This one-year Technical Certificate in Plumbing course will give you the knowledge, skills, and work experience that you will need for your next step, and that employers look for in future employees.

You will study the following modules:

- Principals of construction
- Hot and cold water systems
- Drainage
- Renewable technology

You will also be required to undertake work placement in a relevant field.

As well as your core and specialist modules, you will undertake a tutorial programme, gain support with developing your study skills, and the opportunity to improve your GCSE Maths and English grades.

ENTRY REQUIREMENTS

You must hold four GCSEs at grade 3 or above, including GCSE Maths and English.

PROGRESSION

Upon successful completion of this course, you could undertake an apprenticeship or move directly into employment.

ELECTRICAL & PLUMBING APPRENTICESHIPS

We offer an Installation Electrician/Maintenance Electrician Apprenticeship (Level 3) and a Plumbing and Domestic Heating Technician Apprenticeship (Level 3).

An apprenticeship blends classroom learning with on-the-job training, meaning you can earn while you learn. You will usually spend four days in the workplace as a paid employee, with one day in the classroom where you will reinforce and further develop your skills and workplace learnings.

During your apprenticeship, you will be expected to undertake a range of predefined knowledge, skills and behaviours which will relate to your chosen programme.

Depending on the level, an apprenticeship lasts between one and two years and can start at various points in the year.

ENTRY REQUIREMENTS

Each apprenticeship will have its own specific entry requirements; you can find out more on our website.

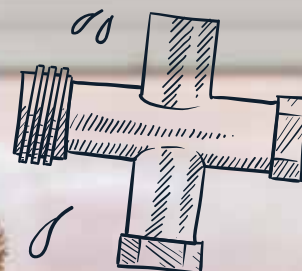
PROGRESSION

An apprenticeship is a great pathway to a rewarding and successful career, or can be a stepping stone to a higher level programme.

You can find out more about our apprenticeships at petroc.ac.uk/apprenticeships

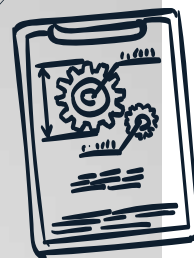


The average salary for an Electrician is **£37,255**¹



¹ Indeed.com

ENGINEERING & MANUFACTURING



discover more!

FIND OUT MORE ONLINE
petroc.ac.uk

SOUTH WEST
INSTITUTE OF
TECHNOLOGY



"What I liked most was how the lecturers, with their own industry experience, were able to enthusiastically teach and explain engineering principles and techniques."

Christopher, Engineering Technician Level 3 (Former Student at Pilton Community College)



WHAT CAN I EXPECT?

Whether you're interested in creating tools for towering structures or developing intricate solutions to solve manufacturing dilemmas, we want the big thinkers and the tiny detail obsessives!

If you have drive, ambition and imagination and see yourself stepping into a career in engineering or manufacturing, there's no better place to study than Petroc.

With an outstanding reputation in the engineering and manufacturing sectors, the South West - and North Devon in particular - are home to a number of global players in the pharmaceutical, aeronautical and marine industries.

Our established and highly regarded Engineering and Manufacturing courses help students to develop a range of skills and disciplines including CAD, 3D printing, fabrication and welding, and manual machining.

With expert teaching delivered by dedicated, professional engineers with decades of experience, we can support you in finding the perfect career pathway to suit your abilities, aims and ambitions.

Our purpose-built engineering workshops feature CNC machinery, a dedicated inspection room, fabrication and welding bays, and VR welders to help you learn, experiment, and build your skills.

A qualification in engineering and manufacturing opens up a wealth of potential career opportunities to you including everything from CAD technician to aerospace engineer. Many of our students progress onto a higher-level engineering course at Petroc.



There were estimated to be approx. **540,700** engineers working in the UK in 2023.¹



The average annual salary for an Environmental Engineer is **£34,265**²

¹ Statista

² Indeed.com



Future Careers...

Opening up a wealth of potential career opportunities:

- Aerospace Engineer
- Automotive Engineer
- CAD Technician
- Maintenance Engineer
- Mechanical Engineer
- Nuclear Engineer



ENGINEERING & MANUFACTURING

Level 2 | Duration: 1 year

 North Devon | FTB479

This T Level Foundation Year Programme has been developed to help you gain the knowledge, skills and work experience needed to progress onto your chosen T Level.

You will gain the following:

- Technical knowledge and practical skills
- Industry-based work experience
- Relevant English, maths and digital skills
- Focused individual support and personal development

The course encompasses the Diploma in Engineering.

You will study the following modules:

- Working in an engineering environment
- Engineering and manufacturing principles
- Bench fitting techniques
- Using a lathe
- Using a milling machine

ENTRY REQUIREMENTS

You must hold four GCSEs at grade 3 or above, including GCSE Maths and English.

PROGRESSION

Upon successful completion of this course, you can progress to our Engineering T Level or an apprenticeship.

ENGINEERING, MANUFACTURING, PROCESSING & CONTROL T LEVEL

Level 3 | Duration: 2 years

 North Devon | FTB071

T Levels ensure you meet the needs of industry by combining classroom theory, practical learning and industry placement.

You will study the following units:

- Essential maths and science
- Mechanical principles
- Electrical and electronic principles
- Mechatronics
- Engineering and manufacturing past, present, and future
- Control systems
- Quality management
- Health and safety
- Responsibilities, attitudes, and behaviours
- Stock and asset management

You will study Machining and Toolmaking as your occupational specialism in your second year.

You will also be required to undertake a 315-hour (minimum) industry placement over the two-year programme.

ENTRY REQUIREMENTS

You must hold at least five GCSEs at grade 5 or above, including English and Maths.

PROGRESSION

Successful completion of this course will enable you to progress onto university, into an apprenticeship, or directly to employment.

ENGINEERING & MANUFACTURING APPRENTICESHIPS

We offer a range of Level 2 and Level 3 Apprenticeships relating to Engineering and Manufacturing.

An apprenticeship blends classroom learning with on-the-job training, meaning you can earn while you learn. You will usually spend four days in the workplace as a paid employee, with one day in the classroom where you will reinforce and further develop your skills and workplace learnings.

During your apprenticeship, you will be expected to undertake a range of predefined knowledge, skills and behaviours which will relate to your chosen programme.

Depending on the level, an apprenticeship lasts between one and two years and can start at various points in the year.

ENTRY REQUIREMENTS

Each apprenticeship will have its own specific entry requirements; you can find out more on our website.

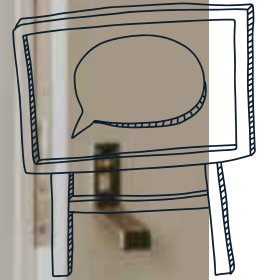
PROGRESSION

An apprenticeship is a great pathway to a rewarding and successful career, or can be a stepping stone to a higher level programme.

You can find out more about our apprenticeships at petroc.ac.uk/apprenticeships



FOUNDATION LEARNING



FIND OUT MORE ONLINE
petroc.ac.uk



discover more!

"During his time on the Project SEARCH programme, Adam worked hard to develop his skills and knowledge, taking advantage of every opportunity that was presented to him. Adam's hard work paid off. He secured employment at the Royal Devon and Exeter Hospital in the medical device library, where he is responsible for cleaning and delivering equipment throughout the hospital."

Tom Webb, Lecturer

WHAT CAN I EXPECT?

Petroc's Foundation Learning programmes are designed for individual learners who are still exploring ideas about their career pathway, and would benefit from a supportive and positive learning environment.

We offer courses from Entry Level 3 to Level 2, and our Academic Pathway course at Level 2 is the perfect stepping stone to Level 3 and beyond.

Throughout your chosen course, our experienced tutors will support and encourage you to develop essential skills, helping you to build your confidence and make the right choices about your future career or academic pathway.

You will also have the opportunity to experience a variety of educational visits and group/community-based activities which will give insight into real-world scenarios, which includes national and international residentials. These experiences will help you work towards independence as well as adding value to your CV.



Gain **CONFIDENCE AND SKILLS** to enable progression to employment

At the end of your programme, you will attend personalised celebrations marking your achievements.

There are no entry requirements for our Foundation Learning programmes; however, you must be willing and able to learn and engage in a variety of vocational and personal development activities.

So whether you are still considering your career options or want to expand and develop your workplace and personal skills, a foundation learning course could be perfect for you!



The average annual salary for a Healthcare Assistant is **£23,707¹**



The average annual salary for a Barber is **£25,346¹**

¹ Indeed.com



Future Progression...

Past learners have progressed onto **Health & Social Care, Construction, and Hair & Beauty** courses.



ENTRY TO CAREER SKILLS

Entry Level | Duration: 1 year

📍 North Devon | FTB086

This study programme is for learners aged 16 to 18, who would like to develop personal, social and employment skills to move into work or further education.

The course will help you to gain confidence and self-esteem, improve your Maths and English, and decide what your next step in life will be.

During the course, you will undertake the following:

- Vocational Skills: Catering, art, public services, human growth & development, UK tourism destinations, and environmental issues.
- Work Experience
- A residential trip

ENTRY REQUIREMENTS

There are no formal entry requirements, however, you will have a one-to-one interview to discuss your personal learning needs. You will also be required to study English and Maths at an appropriate level to suit your ability.

PROGRESSION

After the course, we will help you decide on a progression route and support you towards it. This could be another course at Petroc, an apprenticeship, or employment.

SUPPORTED INTERNSHIP

Entry Level | Duration: 1 year

📍 North Devon | FTB087

📍 Tiverton | FTT001

Supported Internships are for young people aged 16 to 18 with learning difficulties or disabilities, who want to move into employment and need extra support to do so.

The structured study programme reflects the following principles:

- On-the-job training with a local employer supported by expert job coaches
- An employability programme looking at the soft skills of employment
- Vocational profiling to identify skills and qualities
- The opportunity to study for relevant qualifications

ENTRY REQUIREMENTS

There are no formal entry requirements, however, you will have a one-to-one interview to discuss your personal learning needs. You will also be required to study English and Maths at an appropriate level to suit your ability.

PROGRESSION

Upon completion of the course you should be able to move into paid employment, further training, supported employment or an apprenticeship.

CAREER SKILLS

Level 1 | Duration: 1 year

📍 North Devon | FTB087

This study programme offers a range of qualifications to help you decide on the right job or career path for your skills and aspirations. During the course you will develop your work skills alongside your Functional Skills in Maths and English.

Vocational units will include:

- Creating a website
- Investigating a crime scene
- Carrying out a scientific experiment
- Caring for and feeding animals
- Opportunity for work experience in our Liberty Café

You will have the opportunity to enrol in GCSE Citizenship and undertake work experience.

You will also have the opportunity to experience a European residential in either Spain or Sweden.

ENTRY REQUIREMENTS

There are no formal entry requirements, however, you will have a one-to-one interview to discuss your personal learning needs. You will also be required to study English and Maths at an appropriate level to suit your ability.

PROGRESSION

Successful completion of this course can lead to further courses, an apprenticeship or employment.

PROJECT SEARCH (BARNSTAPLE)

Level 1 | Duration: 1 year

 **North Devon** | **FTB244**

Project SEARCH is a supported internship for people with a learning disability or Autistic Spectrum Condition who want a job.

As an intern, you will undertake three 10-week placements at North Devon District Hospital, where you will take on a real role in the hospital. The programme runs five days a week and is supported by two full-time Project SEARCH staff as well as mentors.

At the start of the course, you will receive all the training necessary to be safe and professional within the hospital grounds.

ENTRY REQUIREMENTS

There are no formal entry requirements, however, you will have a one-to-one interview to discuss your personal learning needs.

PROGRESSION

Most students gain employment either after finishing the programme or during the programme.

PROJECT SEARCH (EXETER)

Level 1 | Duration: 1 year

 **Tiverton** | **FTT305**

Project SEARCH is a supported internship for people with a learning disability or Autistic Spectrum Condition who want a job.

As an intern, you will undertake three 10-week placements at Royal Devon and Exeter Hospital, where you will take on a real role in the hospital. The programme runs five days a week and is supported by two full-time Project SEARCH staff as well as mentors.

At the start of the course, you will receive all the training necessary to be safe and professional within the hospital grounds.

ENTRY REQUIREMENTS

There are no formal entry requirements, however, you will have a one-to-one interview to discuss your personal learning needs.

PROGRESSION

Most students gain employment either after finishing the programme or during the programme.

ACADEMIC PROGRESSION PATHWAY

Level 2 | Duration: 1 year

 **North Devon** | **FTB513**

This Academic Progression course is designed to help students who may not have achieved the GCSE results they hoped for, who have not taken any GCSEs, or who need extra GCSEs in order to progress on to the next level of study.

During the course, you will study the following subjects:

- GCSE English Language
- GCSE Maths
- GCSE Biology
- GCSE Psychology
- Level 2 Personal Growth and Wellbeing

You will also have the opportunity to experience a European residential in either Spain or Sweden.

A work experience element is incorporated into the course for those learners who would like to experience what it's like in the workplace or in a certain industry.

ENTRY REQUIREMENTS

You must hold three GCSEs at grade 3 or above, preferably including GCSE Maths and English, or have progressed from the Career Skills course.

PROGRESSION

Upon successful completion of this course, you can progress on to a Level 3 course which includes A Levels, T Levels or apprenticeships.

HAIR & BEAUTY



discover more!

FIND OUT MORE ONLINE
petroc.ac.uk



"Petroc has great facilities and staff for everything you may encounter through studying, and everyone is willing to help and be supportive - it's a really nice feeling."

Eden, Barbering Level 2 (Former student at Ilfracombe Academy)



WHAT CAN I EXPECT?

Whether you are looking for a career in the beauty industry or aspire to be a salon owner, our hair and beauty programmes will set you on the path to your perfect job. Travel the world on cruise ships, create award-winning styles for the latest TV drama or develop a successful local business with your own team of staff. Whatever your dream career path is, we can help you to achieve it!

Petroc hair and beauty courses provide the perfect combination of practical and theory-based learning to ensure you develop the skills, experience and confidence to reach your goals in this creative and dynamic industry.

In our modern and welcoming Lifestyle Centre, we have commercial hair salons, a barber shop and beauty therapy treatment rooms all with top-of-the-range facilities. In these dedicated, professional learning spaces you will develop and practise your skills on real-life clients, honing your abilities and industry knowledge so that you are ready to join one of the UK's fastest-growing employment sectors.

You'll also complete work experience with local businesses to enable you to get first-hand experience of the industry.

Whether you dream of opening your own salon or want to become a celebrity make-up artist with your own brand of products, our passionate, experienced staff and excellent facilities will help you succeed in this exciting profession.



57% of hair and beauty businesses have unfilled vacancies¹



The average annual salary for a Salon Manager is **£28,428**²

¹ nhbf.co.uk

² Indeed.com



Future Careers...

The possibilities are endless in this exciting profession:

- Barber
- Beauty Therapist
- Hairdresser
- Makeup Artist
- Massage Therapist
- Nail Technician



BARBERING

Level 2 | Duration: 1 year

📍 North Devon | FTB219

When you study on this Technical Certificate in Barbering qualification, you will gain valuable experience and insight into the barbering industry.

You will cover the following units:

- Health and safety
- Client care and communication
- Client consultation
- Shampooing and conditioning the hair and scalp
- Cutting men's hair
- Cutting facial hair
- Styling men's hair
- Competition work
- Work experience in a barber shop

Throughout the qualification, you will also develop your employability skills as well as your Maths and English.

ENTRY REQUIREMENTS

You must hold four GCSEs at grade 3 or above, preferably including GCSE Maths and English.

PROGRESSION

Following successful completion of the course, you might wish to progress onto an apprenticeship or seek employment.

BEAUTY THERAPY

Level 2 | Duration: 1 year

📍 North Devon | FTB602

This Technical Certificate in Beauty Therapy programme has been designed to give you the best chance of progressing into a career in the beauty industry with a thorough introduction to key treatments.

You will cover the following units:

- Anatomy and physiology
- Principles of practice for beauty therapists
- Hair removal treatments
- Facial and skin analysis
- Manicure treatments
- Pedicure treatments
- Light-cured gel polish
- Lash and brow treatments
- Apply make-up services

Throughout the qualification, you will also develop your employability skills as well as your Maths and English.

ENTRY REQUIREMENTS

You must hold four GCSEs at grade 3 or above, preferably including GCSE Maths and English.

PROGRESSION

Following successful completion of this qualification you could progress into employment, undertake an apprenticeship, or further your studies by taking a Level 3 qualification.

CUTTING & STYLING

Level 2 | Duration: 1 year

📍 North Devon | FTB165

When you study on this Technical Certificate for Cutting & Styling qualification, you will gain the ultimate introduction to this exciting industry.

You will cover the following units:

- Health and safety
- Client care and communication
- Client consultation
- Shampoo and conditioning
- Cutting women's hair
- Colouring women's hair
- Perming women's hair
- Styling and dressing women's hair
- Competition work

Throughout the qualification, you will also develop your employability skills as well as your Maths and English.

ENTRY REQUIREMENTS

You must hold four GCSEs at grade 3 or above, preferably including GCSE Maths and English.

PROGRESSION

Following successful completion of the course, you might wish to progress onto an apprenticeship or seek employment.

BEAUTY & SPA THERAPY

Level 3 | Duration: 1 year

📍 North Devon | FTB210

This qualification will enable you to further your skills and increase your employment prospects and earning potential.

During the course, you will be introduced to the specialist treatments of body massage, facial and body electrical treatments, hot stone massage and spa treatments.

You will study the following units:

- Electrotherapy
- Spa treatments
- Body massage
- The anatomy and physiology of the body
- Client care
- Health and safety
- Client communication
- Selling and promoting of services and products

You will also be able to further develop your skills by working on paying clients.

ENTRY REQUIREMENTS

You must hold at least four GCSEs at grade 4 or above, including GCSE Maths and English Language.

You must have already completed a full Level 2 in Beauty Therapy.

PROGRESSION

Following successful completion of the course, you might wish to progress onto an apprenticeship or seek employment.

HAIR & BEAUTY APPRENTICESHIPS

We offer a Hairdressing Professional Apprenticeship (Level 2) and Advanced & Creative Hair Professional Apprenticeship (Level 3).

An apprenticeship blends classroom learning with on-the-job training, meaning you can earn while you learn. You will usually spend four days in the workplace as a paid employee, with one day in the classroom where you will reinforce and further develop your skills and workplace learnings.

During your apprenticeship, you will be expected to undertake a range of predefined knowledge, skills and behaviours which will relate to your chosen programme.

Depending on the level, an apprenticeship lasts between one and two years and can start at various points in the year.

ENTRY REQUIREMENTS

Each apprenticeship will have its own specific entry requirements; you can find out more on our website.

PROGRESSION

An apprenticeship is a great pathway to a rewarding and successful career, or can be a stepping stone to a higher level programme.

You can find out more about our apprenticeships at petroc.ac.uk/apprenticeships

HEALTH & SOCIAL CARE



discover more!

FIND OUT MORE ONLINE
petroc.ac.uk





"Within the first two weeks I absolutely fell in love with the subject and knew it was a path I wanted to take."

Willow, Health & Social Care Level 3 (Former student at Tiverton High School)



WHAT CAN I EXPECT?

A career in health and social care is one of the most rewarding, valuable and in-demand professions. As a sector, health and social care is one of the largest in the country covering a huge range of roles in a wide variety of settings with jobs ranging from midwifery to speech and language therapy.

Our health and social care programmes deliver the vital skills needed to work in this sector and prepare you to step into roles that really make a difference.

Alongside your essential knowledge base, you'll develop teamwork, communication, and research skills, helping you to liaise and work effectively with individuals, clients, parents/guardians and other care professionals.

Work experience placements are crucial in the health and social care sector and offer vital real-life learning opportunities to refine your abilities.

You'll have the chance to experience working in settings including SEN (Special Educational Needs) schools, hospitals, hospices and nursing homes, looking at all aspects of health and social care work and exploring what works for you.

Our team of dedicated lecturers, with years of professional experience, will support you throughout your learning and during your placements.

On completing your course, you may wish to step straight into a job, or you may decide to further develop your skills on a degree-level programme.

Results on all of our health and social care courses are excellent, with the vast majority of learners who apply for a healthcare-related degree being offered a place at university.



The UK will need over **1.2 MILLION** health and social care associate professionals by 2035.¹



The average annual salary for a Speech and Language Therapist is **£39,900**²

¹ universitiesuk.ac.uk

² Indeed.com



Future Careers...

Preparing you for roles that make a positive difference:

- Care Manager
- Cognitive Behavioural Therapist
- Community Development Worker
- Counsellor
- Social Worker
- Youth Worker



HEALTH & EDUCATION

Level 1 | Duration: 1 year

 North Devon | FTB319

 Tiverton | FTT315

This programme provides an introduction to health and social care and early years education. It has been crafted to provide you with core knowledge of the industry as well as maximum exposure to the skills you will experience at work or within further study at Petroc.

The course delivers the Level 1 Certificate in Introduction to Health, Social Care & Children & Young People's Settings.

You will study the following units:

- Health and safety when with young children
- Growth and development of young children
- Communication
- Principles and values

You will also undertake a tutorial programme, gain support with developing your study skills, and have the opportunity to improve your GCSE Maths and English grades.

ENTRY REQUIREMENTS

You must hold four GCSEs at grade 2 or above, preferably including Maths and English. If you do not have a GCSE grade 4 in Maths and/or English, you'll continue studying these subjects alongside your course.

PROGRESSION

Upon successful completion of this course, you can progress onto a Level 2 course in Health & Social Care or Education & Childcare, or an apprenticeship.

HEALTH & SOCIAL CARE

Level 2 | Duration: 1 year

 North Devon | FTB079

This Extended Diploma in Health & Social Care programme is designed to give you a thorough introduction to working in the different health and social care settings, including with children, vulnerable adults and older adults.

It will help you gain the knowledge and skills required to support service users and understand how to meet their needs.

You will cover the following units:

- Communication and forming positive relationships
- Equality, diversity and inclusion with service users
- Human lifespan development - physical, cognitive, emotional and social needs
- Safeguarding and protection

ENTRY REQUIREMENTS

You must hold four GCSEs at grade 3 or above, including GCSE Maths and English. You will also need a satisfactory enhanced Disclosure and Barring Service (DBS) check.

PROGRESSION

On successful completion of this qualification, you could apply for our Level 3 Health and Social Care programme, or an apprenticeship.

HEALTH T LEVEL

Level 3 | Duration: 2 years

 North Devon | FTB369

T Levels ensure you meet the needs of industry by combining classroom theory, practical learning and industry placement.

You will study the following units:

- Working in health and science
- Managing information and data in the sector
- Infection prevention and control
- Health and wellbeing
- Good scientific and clinical practice

You will study Adult Nursing as your occupational specialism in your second year.

You will also be required to undertake a 315-hour (minimum) industry placement over the two-year programme which will help you gain a thorough introduction to core principles and the chance to put them into practice.

ENTRY REQUIREMENTS

You must hold at least five GCSEs at grade 4 or above. This must include grade 5 in English and Science.

PROGRESSION

On successful completion of this qualification you can apply for a whole host of degrees, or you may wish to undertake a higher-level apprenticeship.

HEALTH & SOCIAL CARE

Level 3 | Duration: 2 years

 North Devon | FTB487

This National Extended Diploma can give you a valuable qualification in an exciting, challenging and in-demand sector.

You will study the following units:

- Human lifespan development
- Meeting individual care and support needs
- Principles of safe practice
- Physiological disorders and their care
- Anatomy and physiology
- Current research in health and social care
- Promoting public health
- Individuals with additional needs
- Individuals with dementia
- Assessing children's support needs

You will also undertake work experience in which you can develop, apply and reflect on your knowledge and skills in a real-life situation.

ENTRY REQUIREMENTS

You must hold at least five GCSEs at grade 4 or above, including GCSE Maths and English Language. You will also need a clear Disclosure and Barring Service (DBS) check.

PROGRESSION

On successful completion of this qualification, you could progress onto university, a health care apprenticeship, or move into employment as a key worker in social care.

HEALTH & SOCIAL CARE APPRENTICESHIPS

We offer a range of Level 2 and Level 3 apprenticeships relating to Health and Social Care.

An apprenticeship blends classroom learning with on-the-job training, meaning you can earn while you learn. You will usually spend four days in the workplace as a paid employee, with one day in the classroom where you will reinforce and further develop your skills and workplace learnings.

During your apprenticeship, you will be expected to undertake a range of predefined knowledge, skills and behaviours which will relate to your programme.

Depending on the level, an apprenticeship lasts between one and two years and can start at various points in the year.

ENTRY REQUIREMENTS

Each apprenticeship will have its own specific entry requirements; you can find out more on our website.

PROGRESSION

An apprenticeship is a great pathway to a rewarding and successful career, or can be a stepping stone to a higher level programme.

You can find out more about our apprenticeships at petroc.ac.uk/apprenticeships

HOSPITALITY & CATERING



discover more!

FIND OUT MORE ONLINE
petroc.ac.uk





"Learning new techniques and professional ways to do things was really interesting and are great skills for my future career."

Bailea-Rae, Catering Level 2 (Former student of Holsworthy Community College)



WHAT CAN I EXPECT?

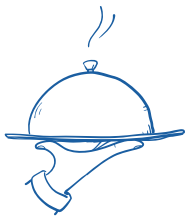
Hospitality and catering is a vibrant, evolving and multi-billion pound industry and, as one of the largest industries in the South West, a hospitality and catering qualification can open doors to exciting opportunities locally - and globally.

If you have a passion for crafting great food and delivering high-quality customer service, a hospitality and catering course could be the perfect choice for you giving you the opportunity to immerse yourself in an incredible array of roles from chef to mixologist to patissier and baker.

At Petroc, we'll feed your abilities and motivation and help you gain the skills and experience needed in this exciting and fast-paced sector.

Our modern, commercial training kitchens and stylish Taw Restaurant will enable you to cook and serve food and drink to the public. Work experience placements will also form an essential part of your development, giving you valuable real-world learning opportunities and allowing you to make valuable contacts in the industry. Plus, our passionate and expert lecturers will encourage you to enter local and national competitions.

Whether you see yourself as part of a bustling catering team or aspire to become a head chef or hotel event manager, a hospitality and catering course could be your pathway to success.



Hospitality is the third largest employer in the UK, with **3.5 million** people working in the sector.¹



The average salary for a Restaurant Manager is **£31,448²**

¹ ukhospitality.org.uk

² [Indeed.com](https://www.indeed.com)



Future Careers...

Your career could take you anywhere in this exciting and fast-paced sector:

- Baker
- Catering Manager
- Chef
- Commis Chef
- Hotel Manager
- Restaurant Manager



PROFESSIONAL CATERING

Level 2 | Duration: 1 year

📍 North Devon | FTB483

This professional hospitality and catering course has been developed as the first step to entering an exciting and dynamic industry.

The course encompasses the Technical Certificate in Professional Cookery, Award in Food Safety in Catering, and Award in Professional Food and Beverage.

You will cover the following techniques:

- Boiling, poaching and steaming
- Stewing and braising
- Baking, roasting and grilling
- Deep frying and shallow frying
- Cold food preparation
- Principles of becoming a professional chef
- How to use knives, tools and equipment
- How to work safely and hygienically

ENTRY REQUIREMENTS

You must hold four GCSEs at grade 3 or above, preferably including GCSE Maths and English.

PROGRESSION

Upon successful completion, you can progress on to the Level 3 course or you may wish to undertake an apprenticeship.

PROFESSIONAL COOKERY

Level 3 | Duration: 1 year

📍 North Devon | FTB084

This programme covers the Technical Diploma in Professional Cookery Level 3 and will broaden and refine your repertoire of skills in the production of complex and modern cuisine from around the world.

You will study the following modules:

- Complex meat dishes
- Poultry and game
- Fish and shellfish
- Complex vegetable dishes
- Complex sauces and soups
- Patisserie and confectionery techniques
- Hospitality supervision techniques
- Wine and food appreciation
- Table theatre
- Mixology and barista skills
- Financial management systems
- Legal aspects

You'll also learn about health and safety, supervisory skills, food costing, and sourcing produce.

ENTRY REQUIREMENTS

You must have successfully completed a Level 2 in Hospitality and Catering or another equivalent qualification.

PROGRESSION

Successful completion of this course can lead to full-time employment in a restaurant, hotel, event or kitchen position. It can also enable you to work abroad in a ski chalet setting or similar. Alternatively, you could progress onto university.

HOSPITALITY & CATERING APPRENTICESHIPS

We offer a Commis Chef Apprenticeship (Level 2).

An apprenticeship blends classroom learning with on-the-job training, meaning you can earn while you learn. You will usually spend four days in the workplace as a paid employee, with one day in the classroom where you will reinforce and further develop your skills and workplace learnings.

During your apprenticeship, you will be expected to undertake a range of predefined knowledge, skills and behaviours which will relate to your chosen programme.

Depending on the level, an apprenticeship lasts between one and two years and can start at various points in the year.

ENTRY REQUIREMENTS

Each apprenticeship will have its own specific entry requirements; you can find out more on our website.

PROGRESSION

An apprenticeship is a great pathway to a rewarding and successful career, or can be a stepping stone to a higher level programme.

You can find out more about our apprenticeships at petroc.ac.uk/apprenticeships



MOTOR VEHICLE



discover more!



FIND OUT MORE ONLINE
petroc.ac.uk



"It's an awesome way of learning a subject while making a living and gives you a lot of real-world experience."

Dion, Motor Vehicle Service and Maintenance Technician Apprenticeship Level 3
(Former student at Bideford College)



WHAT CAN I EXPECT?

A great mechanic will always be in demand, so if you love cars and everything engine-related, one of our motor vehicle courses could be the perfect choice for you.

Whether you can already take a van apart and put it back together or simply have a passion for cars and just want to get started, our excellent training will give you everything you need to join an established business or start your own enterprise.

Our dedicated and fully equipped training area replicates a modern vehicle repair centre with all the lifts, kit and tech you would find in a commercial garage. We also have our very own electric car fleet!

Our knowledgeable and experienced lecturers will help you develop your skills in everything from car maintenance to hybrid vehicle fault diagnosis.

Work experience placements will allow you to refine your knowledge in a real-world setting, honing your customer and client-facing abilities and getting to grips with what it takes to succeed in the motor sector.

You may want to open your own garage, work with an established car manufacturer or even move into the fast-paced world of motorsports or electric car design and development. Whatever your career goals and ambitions, we can set you on the right track to achieving them.



UK used car transactions grew by **5.1%** in 2023.¹



The average salary for a Mechanic is **£38,213**²



Future Careers...

Setting you on the right track to achieving your career goals and ambitions:

- Auto Body Repair Technician
- Car Sales Manager
- Mechanic
- Tyre Technician
- Vehicle Inspector

¹ webuyanycar.com

² Indeed.com



AUTOMOTIVE

Level 1 | Duration: 1 year

 **North Devon** | FTB111

This programme provides an introduction to the motor vehicle industry. It has been crafted to provide you with core knowledge of the industry as well as maximum exposure to the skills you will experience at work or within further study at Petroc.

The course delivers the Certificate in Automotive Maintenance.

You will study the following units:

- Health and safety
- Tools, equipment and consumables
- Engine operation and components
- Spark ignition systems
- Steering systems
- Suspension systems
- Braking systems
- Wheels and tyres

You will also undertake a tutorial programme, gain support with developing your study skills, and have the opportunity to improve your GCSE Maths and English grades.

ENTRY REQUIREMENTS

You must hold four GCSEs at grade 2 or above, preferably including Maths and English. If you do not have a GCSE grade 4 in Maths and/or English, you'll continue studying these subjects alongside your course.

PROGRESSION

Upon successful completion of this course, you can progress onto a higher level qualification or an apprenticeship.

LIGHT VEHICLE MAINTENANCE & REPAIR

Level 2 | Duration: 1 year

 **North Devon** | FTB113

This Diploma is designed to develop your manual skills, knowledge and understanding of light vehicle maintenance and repair.

You will learn all about the systems associated with vehicle maintenance and repair, including the following units:

- Health, safety and good housekeeping.
- Materials, fabrication, tools and measuring devices.
- Routine light vehicle maintenance.
- Light vehicle engine mechanical, lubrication and cooling system units.
- Light vehicle fuel, ignition, air and exhaust system units.
- Removing and replacing light vehicle electrical units.
- Removing and replacing light vehicle chassis units.
- Removing and replacing light vehicle transmission and driveline units.

ENTRY REQUIREMENTS

You must hold four GCSEs at grade 3 or above, including GCSE Maths and English.

PROGRESSION

Successful completion of this programme can lead to a Level 3 apprenticeship in the motor industry. Once you are employed, you will be encouraged to complete further qualifications as you need them.

MOTOR VEHICLE APPRENTICESHIPS

We offer a Motor Vehicle Service and Maintenance Technician (Light Vehicle) Apprenticeship (Level 3).

An apprenticeship blends classroom learning with on-the-job training, meaning you can earn while you learn. You will usually spend four days in the workplace as a paid employee, with one day in the classroom where you will reinforce and further develop your skills and workplace learnings.

During your apprenticeship, you will be expected to undertake a range of predefined knowledge, skills and behaviours which will relate to your chosen programme.

Depending on the level, an apprenticeship lasts between one and two years and can start at various points in the year.

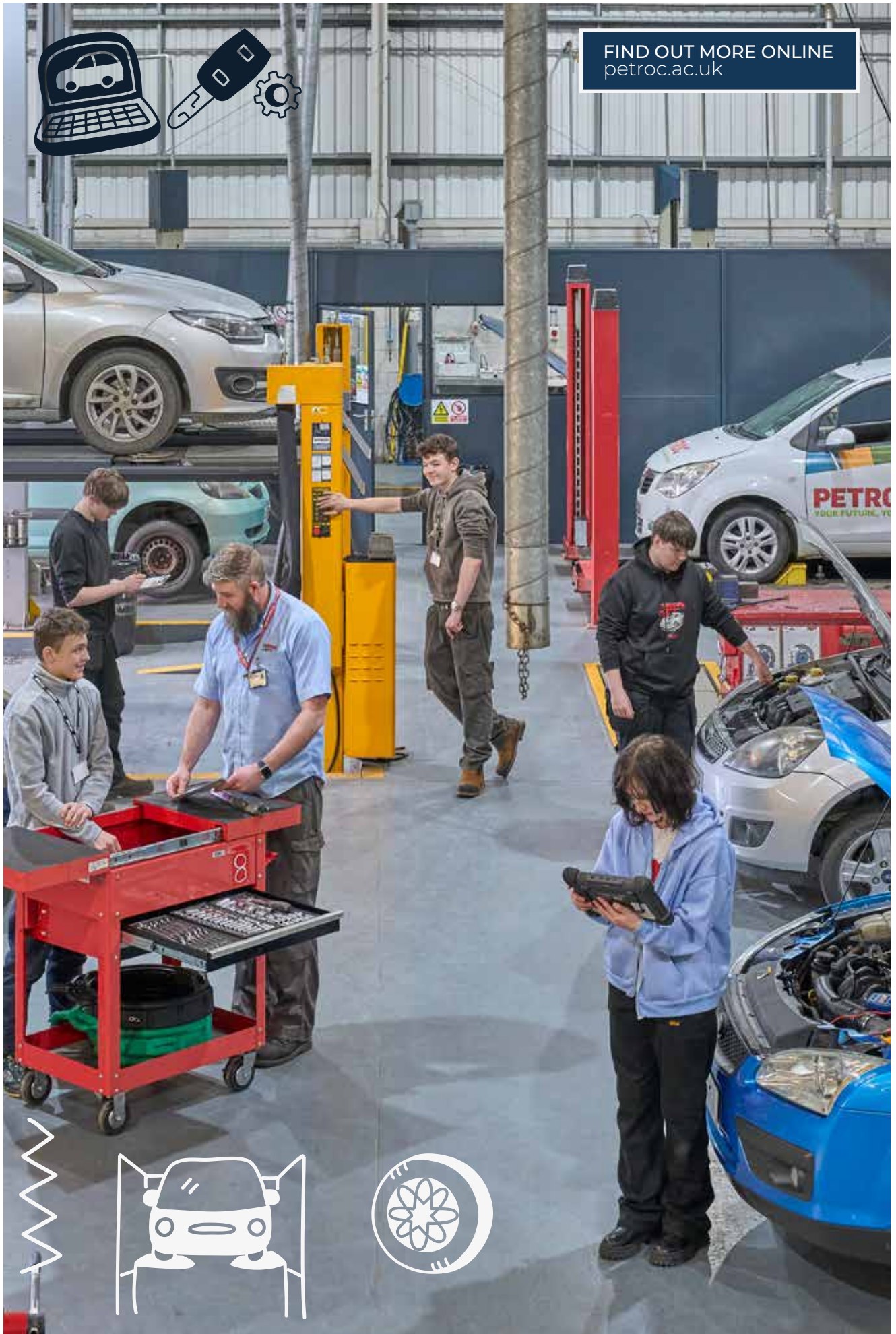
ENTRY REQUIREMENTS

Each apprenticeship will have its own specific entry requirements; you can find out more on our website.

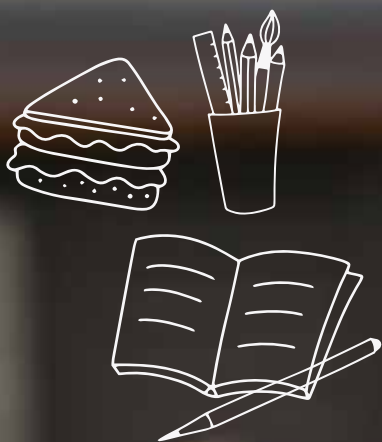
PROGRESSION

An apprenticeship is a great pathway to a rewarding and successful career, or can be a stepping stone to a higher level programme.

You can find out more about our apprenticeships at petroc.ac.uk/apprenticeships



PREPARING FOR ADULTHOOD



discover more!

FIND OUT MORE ONLINE
petroc.ac.uk





"During his time at Petroc, Keir learned a wide range of skills which helped him transition into adulthood and pursue his dream career as an actor and dancer. Keir has already appeared in a fashion photo shoot and music videos. When he isn't performing, he works part-time for a local farm shop and at RHS Rosemoor. We are delighted to see how far Keir has progressed since his time at Petroc. He has such a wonderful way with people and it's fantastic to see his confidence shine both on and off screen!"

Toby Di Georgio, Faculty Manager



WHAT CAN I EXPECT?

At Petroc, we provide learning opportunities that cater to a wide range of needs and abilities. We are here to help broaden horizons and empower individuals to reach their full potential, through a supportive and inclusive learning environment where every student can thrive.

We have an established and highly regarded Special Educational Needs and Disability (SEND) provision and specialist support that assists learners with additional needs in their education goals and career ambitions.

Our experienced team supports learners as they move on from their school environment, by providing safe surroundings and an exciting and challenging curriculum that encourages them to become more independent and confident.

With unique facilities such as our cafés, gardens and spaces for enterprise-driven craft and skill development, we provide places where students can feel comfortable and confident and where their learning and social skills can flourish.

Our Preparing for Adulthood courses facilitate a transition for learners into adulthood, being actively involved in their local community through a journey based on their individual needs and aspirations.

We give our learners the time they need to develop skills, investigate employability options, and work towards their chosen vocation, whilst being continually supported and encouraged by our dedicated team.



Future Progression...

Learners have progressed into careers and/or courses in **performing arts, motor vehicle, childcare, horticulture and catering.**

FOUNDATION YEAR

Entry Level | Duration: 1 year

North Devon | FTB300A

Tiverton | FTT307

This Foundation Year course is a tailored programme to meet the educational and support needs of Pre-Entry and Entry Level learners. It covers the four outcomes that young people with disabilities have said are important to them: Employment, Independent Living, Community Inclusion and Good Health.

The course will include the following elements:

- Nurturing day-to-day skills for living with increasing independence.
- Developing relevant skills needed for employment.
- Activities, visits and trips.
- Work experience opportunities.
- Opportunities to integrate with mainstream students.
- Enrichment activities including sports, arts and crafts, performing arts and swimming.

ENTRY REQUIREMENTS

There are no formal entry requirements, however, you will have a one-to-one interview to discuss your personal learning needs. You will also be required to study English and Maths at an appropriate level to suit your ability.

PROGRESSION

Upon completion of this course, you can progress towards further education, employment, independent living and participation in the community.

PUBLIC SERVICES & OUTDOOR ADVENTURE



discover more!



FIND OUT MORE ONLINE
petroc.ac.uk



"I knew that I wanted to join an emergency service, I was just not sure on which one - this course gave me insight into all of them."

Jade, Uniformed Protective Services Level 3 (Former student at Bideford College)



WHAT CAN I EXPECT?

Police officer, coastguard, firefighter or water sports coach. If any of these demanding, high-octane roles are your dream job then we can help you achieve your ambitions!

At Petroc, we have created a series of courses that will enable you to take the first crucial steps towards a career in public services or outdoor adventure.

All of these courses are exciting and challenging and are a perfect platform for you to further explore your passions, and develop the essential skills and knowledge required in these dynamic fields.

If you enjoy supporting and working with others, have a keen interest in working outdoors, or want to look at training as a first responder or moving towards a career in uniform, we can support you in your learning.

We have a team of passionate and inspirational lecturers who can provide you with hands-on experience, alongside the supporting theoretical knowledge you need to achieve your qualification.

We make use of North Devon's beautiful coastline and natural environments as innovative teaching spaces where you will have the opportunity to enhance your practical learning alongside essential teamwork and leadership training.

You may also wish to join our Uniformed Services Academy, where you can engage in social action projects, gain insight into the work of the uniformed service and develop your personal, professional, and employability skills.

Students who study on these courses progress onto a wide variety of different careers in many diverse, but always exciting, work settings.



There were **521,000** employees in the Civil Service in March 2023¹



The average salary for an Outdoor Activity Instructor is **£27,012**²

¹ ons.gov.uk

² Indeed.com



Future Careers...

Setting you on a path to your perfect job in many diverse settings:

- Army Officer
- Coastguard
- Firefighter
- Outdoor Activity Instructor
- Paramedic
- Police Officer



PUBLIC SERVICES & SPORT

Level 1 | Duration: 1 year

📍 North Devon | FTB134

This Level 1 programme combines classroom theory and practical learning to provide an introduction to sports and public services.

It has been carefully crafted to provide you with a range of subject knowledge and maximum exposure to the types of skills you will experience in the work environment or within further study at Petroc.

The course delivers the Level 1 Introductory Award in Public Services and the Level 1 Introductory Certificate in Sport.

You will study the following units:

- Finding out about the public services
- Keeping active and healthy
- Developing a personal progression plan

You will also undertake a tutorial programme, gain support with developing your study skills, and have the opportunity to improve your GCSE Maths and English grades.

ENTRY REQUIREMENTS

You must hold four GCSEs at grade 2 or above, preferably including Maths and English. If you do not have a GCSE grade 4 in Maths and/or English, you'll continue studying these subjects alongside your course.

PROGRESSION

Upon successful completion of this course, you can progress onto one of our Level 2 related courses.

PREPARATION FOR PUBLIC SERVICES

Level 2 | Duration: 1 year

📍 North Devon | FTB488

This Diploma in Preparation for Public Services course is designed for anyone who wishes to pursue a career in the public services sector (police, fire, paramedic, armed forces).

You will study the following modules:

- Public service skills and support for the community
- Employment in uniformed public services
- Health and fitness for entry into the uniformed public services
- Activities and teamwork
- Sport and recreation
- Expedition and land navigation skills
- Crime and its effects on society
- Attending emergency incidents

ENTRY REQUIREMENTS

You must hold four GCSEs at grade 3 or above, including GCSE Maths and English.

PROGRESSION

Upon successful completion of this course, you will be able to progress on to the Level 3 Uniformed Protective Services or Level 3 Sport & Outdoor Activities.

SPORT AND OUTDOOR ACTIVITIES

Level 3 | Duration: 2 years

📍 North Devon | FTB500

This National Extended Diploma blends classroom-based theory with exciting practical activities.

You'll get to experience outdoor rock climbing, kayaking, canoeing, mountain biking, navigating plus coasteering, gorge walking and anything else we can cram in!

You will study the following modules:

- Health, wellbeing and sport
- Leadership and instructing
- Sporting injuries
- Organising events
- Sport and leisure facility operations
- Sports tourism
- Health and safety factors
- Sustainability
- Expedition experience

You must be happy to get cold, wet and muddy - regularly! And to also accept and manage the risks involved in what are potentially dangerous activities.

ENTRY REQUIREMENTS

You must hold at least five GCSEs at grade 4 or above, including GCSE Maths or English Language. You will also need to be comfortable with heights and being in cold water.

PROGRESSION

Successful completion of this course will enable you to progress onto further study, or directly to employment both locally and further afield.

UNIFORMED PROTECTIVE SERVICES

Level 3 | Duration: 2 years

📍 North Devon | FTB099

This Extended Diploma leads to a qualification with real value and great potential. As well as studying key topics, you will improve fitness levels and develop independent thinking, critical analysis, research skills and teamwork skills.

You will study the following modules:

- Citizenship and diversity
- Behaviour and discipline
- Global affairs and the media
- Physical preparation, health and wellbeing
- Teamwork, leadership and communication
- Government and the protective services
- Emergency incidents
- Sociological perspectives
- Skills for outdoor activities
- Introduction to criminology

Practical elements include climbing, coasteering and canoeing.

ENTRY REQUIREMENTS

You must hold at least five GCSEs at grade 4 or above, including GCSE Maths and English.

PROGRESSION

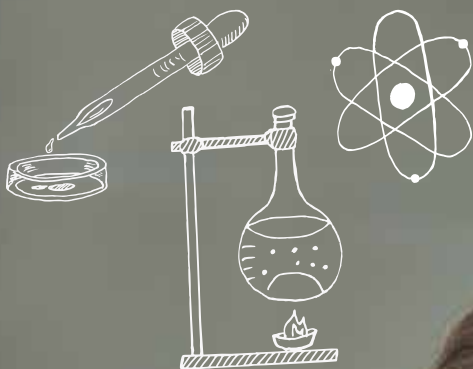
Successful completion of this course will enable you to progress onto university or further training in the protective services sector. Possible career paths include the Police Force, Fire Service, HM Revenue and Customs, the Royal National Lifeboat Institution, HM Prison Service, British Armed Forces and Rescue Services.



SCIENCE

SOUTH WEST

I N S T I T U T E O F
T E C H N O L O G Y



FIND OUT MORE ONLINE
petroc.ac.uk



discover more!



"Our world is constantly changing due to the developments in science. Studying science allows you to perform practicals with real and sometimes complex scientific equipment and be taught by lecturers who love sharing their knowledge and experience!"

David Waters, Science Lecturer



WHAT CAN I EXPECT?

Calling all future microbiologists, experimental chemists and lab technicians!

At Petroc, our science courses offer an excellent foundation for exciting science-based careers in a huge number of industries, so come and explore your passion for practical science with us.

By studying on one of our programmes, you will gain the knowledge base and skills needed to succeed in a range of professions, as well as an interesting and immersive learning experience in our labs, bursting with excellent facilities and equipment.

You will build on the knowledge gained from your GCSE Chemistry, Biology, Physics and Maths and explore how that knowledge can be used in the workplace.

As well as studying the sciences specific to your course, you'll have the chance to take on fascinating work experience to support your future career ambitions. You will also get the opportunity to join our STEM or VETMED Academy to gain further experience and skill development to add to your CV and professional profile.

Future career options in science include laboratory technician, food technologist, metrology technician, or healthcare science technician among many others.

Petroc will help you to unlock the door to a fulfilling and successful future in the world of science.



According to a survey conducted in 28 countries, scientists are among the world's **MOST TRUSTED** professions¹



The average salary for a Scientist is **£36,370**²

¹ universitiesuk.ac.uk

² Indeed.com



Future Careers...

Whatever your aspirations, there are a number of exciting science-based careers available to you:

- Analytical Chemist
- Astrophysicist
- Biomedical Scientist
- Laboratory Technician
- Microbiologist
- Pharmacologist



SCIENCE T LEVEL

Level 3 | Duration: 2 years

 North Devon | FTB372

T Levels ensure you meet the needs of industry by combining classroom theory, practical learning and industry placement.

You will study the following units:

- Health, safety and environmental regulations
- Managing information and data
- Good scientific and clinical practice
- Core science concepts
- Further science knowledge
- Scientific methodology
- Experimental equipment and techniques
- Ethics

You will study Technical: Laboratory Science as your occupational specialism in your second year.

You will also be required to undertake a 315-hour (minimum) industry placement over the two-year programme.

ENTRY REQUIREMENTS

You must hold a GCSE grade 5 or above in GCSE English, maths, and science; as well as at least two other GCSEs at grade 4 or above.

PROGRESSION

On successful completion of this qualification, you could move into a wide range of possible careers or progress to further study.

SCIENCE APPRENTICESHIPS

We offer a Laboratory Technician Apprenticeship (Level 3).

An apprenticeship blends classroom learning with on-the-job training, meaning you can earn while you learn. You will usually spend four days in the workplace as a paid employee, with one day in the classroom where you will reinforce and further develop your skills and workplace learnings.

During your apprenticeship, you will be expected to undertake a range of predefined knowledge, skills and behaviours which will relate to your programme.

Depending on the level, an apprenticeship lasts between one and two years and can start at various points in the year.

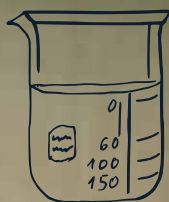
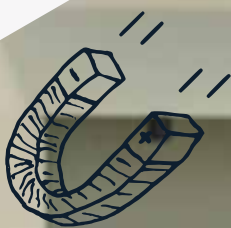
ENTRY REQUIREMENTS

Each apprenticeship will have its own specific entry requirements; you can find out more on our website.

PROGRESSION

An apprenticeship is a great pathway to a rewarding and successful career, or can be a stepping stone to a higher level programme.

You can find out more about our apprenticeships at petroc.ac.uk/apprenticeships



SPORT, HEALTH & FITNESS



discover more!

FIND OUT MORE ONLINE
petroc.ac.uk





"The Petroc Sports staff are all amazing! Every single one of them has a reputation with ex-students and I can see why."

Harvey, Sport Level 3 (Former student of Pilton Community College)



WHAT CAN I EXPECT?

Want to be part of the multibillion-pound health and fitness industry? Create a bespoke training space, develop your own fitness brand, or find a social media audience focussing on health?

If you are highly motivated to develop yourself physically and mentally, one of our sports programmes could be the perfect option for your next career step.

Our dedicated and supportive teaching team will develop your skills and help you identify business and employment opportunities to suit your aspirations.

You will have the enviable opportunity of taking your sports lessons at the Tarka Leisure Centre in the centre of Barnstaple where they boast an impressive range of facilities including a multi-use sports hall, large gym, fitness studios and group cycling studio.

You will learn alongside like-minded individuals, looking to explore career options that optimise holistic health and fitness and take your place in this rapidly growing sector.

You will gain essential practical experience to support the theoretical elements of the course and have valuable opportunities to work within the local community in settings such as schools, festivals and community events.

Alumni from our sports courses have become PE teachers, personal trainers, nutritionists, and sports massage therapists and many have secured highly sought-after places at some of the country's leading sports universities.

This is a multi-faceted industry with a wealth of opportunities open to innovative and driven individuals. Whether you decide to step straight into employment, start your own business or use your knowledge base to move onto a degree in sports science or psychology, we'll support and guide you every step of the way.



There were estimated to be approximately **57,900** fitness instructors working in the UK as of the second quarter of 2023.¹



The average salary for a Personal Trainer is **£30,453**²

¹ Statistica

² Indeed.com



Future Careers...

The possibilities are endless in this innovative industry:

- Gym Manager
- Lifeguard
- Personal Trainer
- PE Teacher
- Sports Coach
- Sports Psychologist



PUBLIC SERVICES & SPORT

Level 1 | Duration: 1 year

 **North Devon** | FTB134

This Level 1 programme combines classroom theory and practical learning to provide an introduction to sports and public services.

It has been carefully crafted to provide you with a range of subject knowledge and maximum exposure to the types of skills you will experience in the work environment or within further study at Petroc.

The course delivers the Level 1 Introductory Award in Public Services and the Level 1 Introductory Certificate in Sport.

You will study the following units:

- Finding out about the public services
- Keeping active and healthy
- Developing a personal progression plan

You will also undertake a tutorial programme, gain support with developing your study skills, and have the opportunity to improve your GCSE Maths and English grades.

ENTRY REQUIREMENTS

You must hold four GCSEs at grade 2 or above, preferably including Maths and English. If you do not have a GCSE grade 4 in Maths and/or English, you'll continue studying these subjects alongside your course.

PROGRESSION

Upon successful completion of this course, you can progress onto one of our Level 2 related courses.

SPORT

Level 2 | Duration: 1 year

 **North Devon** | FTB485

If you have a passion for sports, this Certificate in Sport programme will give you a taste of the skills and experiences you'll need for a successful career.

You will study the following units:

- Fitness for sport
- Anatomy and physiology
- Practical sports performance and analysis
- Leading sports activities
- Injury in sport
- Training for personal fitness

You will be involved in planning and leading sports activities, instructing exercise to others and contributing to real-life sports experiences.

You will also have the opportunity to take part in the sport leader development package which involves gaining real leadership experience in a range of settings.

ENTRY REQUIREMENTS

You must hold four GCSEs at grade 3 or above, preferably including GCSE Maths and English.

PROGRESSION

Upon successful completion of this course, you can progress onto our Level 3 Sports or Outdoor Adventure course. Alternatively, you may wish to move directly into employment.

SPORT

Level 3 | Duration: 2 years

 **North Devon** | FTB102

This National Extended Diploma covers many aspects of the sports industry and gives an excellent academic sport background to take forward into a related career.

You will study the following modules:

- Anatomy and physiology
- Sports leadership
- Fitness testing
- Fitness training and programming
- Research methods
- Development and provision of sport
- Skill acquisition
- Practical sport
- Rules, regulations and officiating

You will have the opportunity to explore the different careers in sport such as sport psychology, sports massage, nutrition, coaching, analysis, and personal training.

ENTRY REQUIREMENTS

You must hold at least five GCSEs at grade 4 or above, including GCSE Maths and English. There is significant scientific content in this course so we recommend that you come with a good understanding of science subjects.

You will also have to complete a Disclosure and Barring Service (DBS) check.

PROGRESSION

Successful completion of this course could lead to university or directly into employment.

SPORT AND OUTDOOR ACTIVITIES

Level 3 | Duration: 2 years

North Devon | FTB500

This National Extended Diploma blends classroom-based theory with exciting practical activities.

You'll get to experience outdoor rock climbing, kayaking, canoeing, mountain biking, navigating plus coasteering, gorge walking and anything else we can cram in!

You will study the following modules:

- Health, wellbeing and sport
- Leadership and instructing
- Sporting injuries
- Organising events
- Sport and leisure facility operations
- Sports tourism
- Health and safety factors
- Sustainability
- Expedition experience

You must be happy to get cold, wet and muddy - regularly! And to also accept and manage the risks involved in what are potentially dangerous activities.

ENTRY REQUIREMENTS

You must hold at least five GCSEs at grade 4 or above, including GCSE Maths or English Language.

You will also need to be comfortable with heights and being in cold water.

PROGRESSION

Successful completion of this course will enable you to progress onto further study, or directly to employment both locally and further afield.



WORK EXPERIENCE

FIND OUT MORE ONLINE
petroc.ac.uk

Whatever subject you choose to study, work experience is an essential part of your course programme, and a successful work placement will really stand out on your CV.

During your studies at Petroc, you will spend some of your time on an industry placement or undertaking work experience. These business-based opportunities could be within Devon, in the wider South West region or even abroad.

We are proud to have developed strong links with local employers who provide exceptional and highly valuable work experience opportunities. They include the NHS, local councils, charities, marketing and media companies, solicitors, accountancy firms, and engineering and manufacturing organisations.

The amount of time you spend on your work experience will depend on your qualification and course level - it could be anywhere between 30 and 375 hours. This will be discussed in more detail at your interview.

If you are undertaking a T Level, the 'Industry Placement' element is an integral part of the course. This placement is a valuable opportunity for you to complete a minimum of 315 hours of relevant work experience and gain the skills, knowledge and attitudes to excel in your chosen field.

We believe in the power of self-sourcing your industrial placement: approaching an employer that you have aspirations of working with can stand you in good stead for your future career path. But don't worry - the Industry Placements Team will have regular contact with you, supporting you with CV and letter writing, making applications to employers and also supporting you with sourcing a placement if you are unable to do so yourself.

Work experience placements for other courses are supported by the specific faculties and our Advice & Guidance Team. We will encourage you to self-source a placement but will support you where required. Sometimes a work experience placement can lead to securing a job or an apprenticeship after you have completed your course, therefore, finding a placement that fits with your career aspirations is an excellent start to your future.

Your chosen course may offer the chance to travel overseas. Petroc Go could provide the opportunity to forge new friendships, explore different parts of the world, broaden horizons, and make lasting memories.

WORKING WITH TOP LOCAL EMPLOYERS INCLUDING:



"I enjoyed my placements at the hospital, as you get to see the real life healthcare given to real patients. You also get to explore most of the departments in the hospital, it's an amazing experience."

Evan, T Level Health

STUDENT LIFE

FIND OUT MORE ONLINE
petroc.ac.uk

Your college experience is so much more than the course you study. It's about meeting new people, making new friends, developing your skills and knowledge, strengthening your CV, and enriching your life.

Petroc Plus is our extensive programme of extracurricular activities which aims to support your future success, both at college and beyond. We pride ourselves on being inclusive and offer an exceptional range of activities in addition to your academic studies, helping to make your Petroc experience an enjoyable, enriching and valuable one.

We encourage all students to participate in at least one Petroc Plus opportunity every academic year and with a comprehensive range of clubs, societies and academies to aid your personal and career development, there is plenty to choose from.

Join one of our Academies, get involved in a Petroc sports team, take part in one of our clubs or societies, sign up for the DofE Gold award or become a Student Ambassador. Whatever you choose, you'll be able to develop your skills, knowledge and confidence in a safe, enjoyable and supportive environment.

You get what you put in, and we want you to finish your course with a CV that is bursting with achievements!



PETROC ACADEMIES

Petroc Academies support the work and activities of specific topics, subjects and course areas, and allow you to develop your skills and expand your education.

By joining one of our Academies, you'll be able to explore your passions, add to your CV and professional profile, and start preparing for a wide range of highly skilled careers and university courses. Here are a selection of the Academies we currently offer – full details can be found on our website.

discover
more!



CREATIVE ACADEMIES: Develop your creative flair in art, design, acting, music production, media or film.

DUKE OF EDINBURGH GOLD AWARD: Join the challenge of a lifetime! Develop skills, undertake volunteering, spend time on a residential trip and head out on your final expedition!

LAW ACADEMY: Participate in the 'Bar Mock Trial', interact with legal professionals and improve your employability skills.

RUSSELL GROUP & OXBRIDGE ACADEMY: Develop your skills through writing competitions, discussions and debates and receive expert practical advice to enhance your application.

STEM ACADEMY: Enhance your understanding of the scientific world, hear from guest speakers, and take part in events and competitions.

SURF ACADEMY: Whether you're new to surfing or are a more experienced surfer, develop your board skills on one of our beautiful North Devon beaches!

UNIFORMED SERVICES ACADEMY: Gain knowledge of the uniformed services, take part in physical and practical sessions, and engage with serving personnel.

VETMED ACADEMY: Be inspired by guest speakers, and participate in work placements and practical sessions to support your career in medicine, dentistry, veterinary science or nursing.

SPORT ACADEMIES: Hone your skills and learn about sports nutrition and psychology as well as techniques and tactics. Join us in football, netball, basketball, volleyball, rugby, climbing and more!



Celebrating Success

In 2024, two of Petroc's students reached the final of the AOC College Fitness Games, so proud of Caitlyn and who were announced as fittest male student and fittest female student!



FOUNDATION

FIREBALL
BEACH VOLLEYBALL

KIDS ADVENTURE
COMPANY



CLUBS & ACTIVITIES

We've got a fantastic array of clubs and activities for you to get involved in including yoga, Dungeons and Dragons club, debate society, book club, LGBT+ group, badminton and lots more. You could even help produce our student newsletter, volunteer in our 'Zero Shop' or DJ on our college radio station - Fresh FM!

Take a look on our website for the most up-to-date information about the activities available and how you can get involved.

STUDENT UNION

Our students are the heart and focus of everything we do and by choosing to study at Petroc, you will automatically become a member of the Petroc Student Union (PSU).

The PSU is run by a volunteer committee of elected students who not only put together events, activities and societies but also represent you on a wide range of issues surrounding college life.

As a member of the PSU, you are also entitled to certain student discounts and benefits including, for a small cost, those gained through the TOTUM card.



STUDENT AMBASSADORS

Working in close collaboration with Petroc staff, the Student Ambassador Team works to promote the College within our community.

As part of the team, you will attend a variety of events at local schools as well as at the college itself. You'll be a point of contact for fellow students with queries, ideas or suggestions and will become a well-known and respected face on campus. Becoming a Student Ambassador is a wonderful opportunity to meet new people, increase your confidence and strengthen your CV.



discover more!

"In my first year, I was involved in the Bar Mock Trial. I really enjoyed learning how a court works and how to argue a case - this also helped me with my anxiety when it comes to public speaking."

Liam, A Level Law, Sociology and English Language



"I do both the Film Club and Just Dance. I really like that anyone from different courses can join, so it's a great way of meeting new people."

Maddie, Health and Social Care Level 2

SUPPORTING YOU & YOUR LEARNING

Moving on from school and starting at college can feel both exciting and daunting. There are so many unknowns: new buildings and campuses to navigate, teachers and lecturers to meet and friends to make; it's perfectly normal to feel a bit nervous!

But remember that college is also a place where you should feel free to grow, be your authentic self and meet like-minded people who share your passions and interests. Most of all, it is a place where you'll be supported to fulfil your ambitions.

Petroc is committed to ensuring all students learn in a safe and friendly environment by providing the support you need to shine. Our aim is to help you succeed, during your time here with us and into the future.

ACCESSIBILITY

We're here to make your life easier so that you can focus on your learning and personal development.

Our campuses are accessible for wheelchair users with ramps and lifts situated throughout the college.

We have assistive technology across all curriculum areas and we complete Learning Inclusion Plans with you to ensure that any learning needs you tell us about have strategies and resources in place.



ADDITIONAL LEARNING SUPPORT

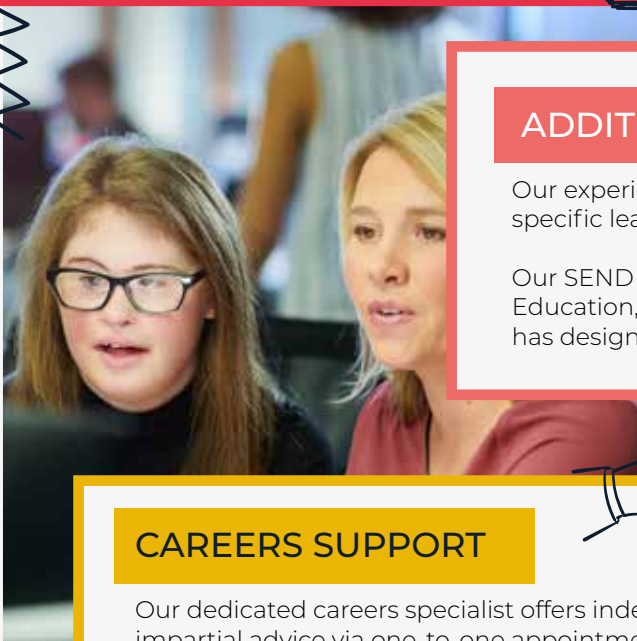
Our experienced teams are on hand to help you with any specific learning needs and/or disabilities you may have.

Our SEND team will coordinate support if you have an Education, Health and Care Plan (EHCP), and the college has designated areas and staff to support neurodiversity.

CAREERS SUPPORT

Our dedicated careers specialist offers independent, impartial advice via one-to-one appointments and can help you take the next step in your career.

This includes guidance with career planning; course and subject choices; post-course options; finding apprenticeships; choosing the right university; writing a UCAS personal statement; and supporting you with job searches, applications and interview preparation.



CHILDCARE

'Care to Learn' is a Government run scheme for students who need childcare support and who are under 20 years old at the start of their course.

This initiative provides financial assistance to eligible students to help cover the costs associated with childcare services, enabling them to pursue their academic goals. Please contact the Advice & Guidance Centre for more information.



FINANCIAL SUPPORT

Education is free for all students who are aged 16-18 (on 31 August of the year you start your course). There may be additional costs for books or travel, but please do not let money matters stop you from coming to college.

We're here for every learner, so if you need financial assistance to cover the costs of studying or travel, we may be able to help. Look for more details about the Bursary Fund or bus passes on our website, or call and speak to our friendly Advice & Guidance Team for more information.



"I have enjoyed how inclusive Petroc is. There have been a lot of events, for example, the remembrance to the holocaust, and awareness for LGBT. Also, there are really nice and supportive teachers and it is a positive learning environment."

Toby, Animal Care Level 2

SAFEGUARDING AND WELLBEING

The protection, safety, health, wellbeing and welfare of all learners is of paramount importance at Petroc.

We follow the statutory guidance and recognise our responsibility to safeguard and promote the welfare and wellbeing of children and young people, as well as our adult learners.. We are committed to a 'whole college approach' to safeguarding. To this end, we ensure that all staff are trained in Safeguarding and Child Protection and in preventing radicalisation.

The college also provides a comprehensive wellbeing and welfare service to all students. This includes support for housing, financial needs, and the physical and emotional safety, wellbeing and welfare of our learners, all of which can impact a student's ability to study.

Petroc is an open and inclusive college that values diversity and prides itself on zero tolerance towards discrimination of any kind. Our commitment is that every student at Petroc will have the support and tools needed to achieve their fullest potential in both their personal and educational journey.





SUSTAINABILITY

At Petroc, we're passionate about sustainability. We believe that there will be no greater challenge to our global future than the current climate emergency.

As a college, we are committed to ensuring that we continuously improve the way our organisation approaches issues of sustainability. We do our part to protect the wider environment by embedding principles and practices that build awareness, highlight responsibilities and meet our own sustainability standards.

Our Sustainability Group meets on a regular basis to discuss cross-college activity, share ideas and consider future initiatives which have included a tree-planting exercise, a pollinator project, sustainability seminars and various on-campus developments to reduce waste and improve energy efficiency. We are also actively committed to the UN Sustainable Development Goals.



YOUNG ADULT CARERS

If you care for a family member who has a disability, a long-term serious illness, or a substance misuse problem, you may be a young adult carer.

Petroc is committed to helping young adult carers throughout their college experience and understands that looking after a loved one whilst also being a student can be challenging.

We can provide one-to-one personal and academic support, advice and guidance; quiet space to make urgent phone calls; referrals to local services; and, support from our wellbeing team.



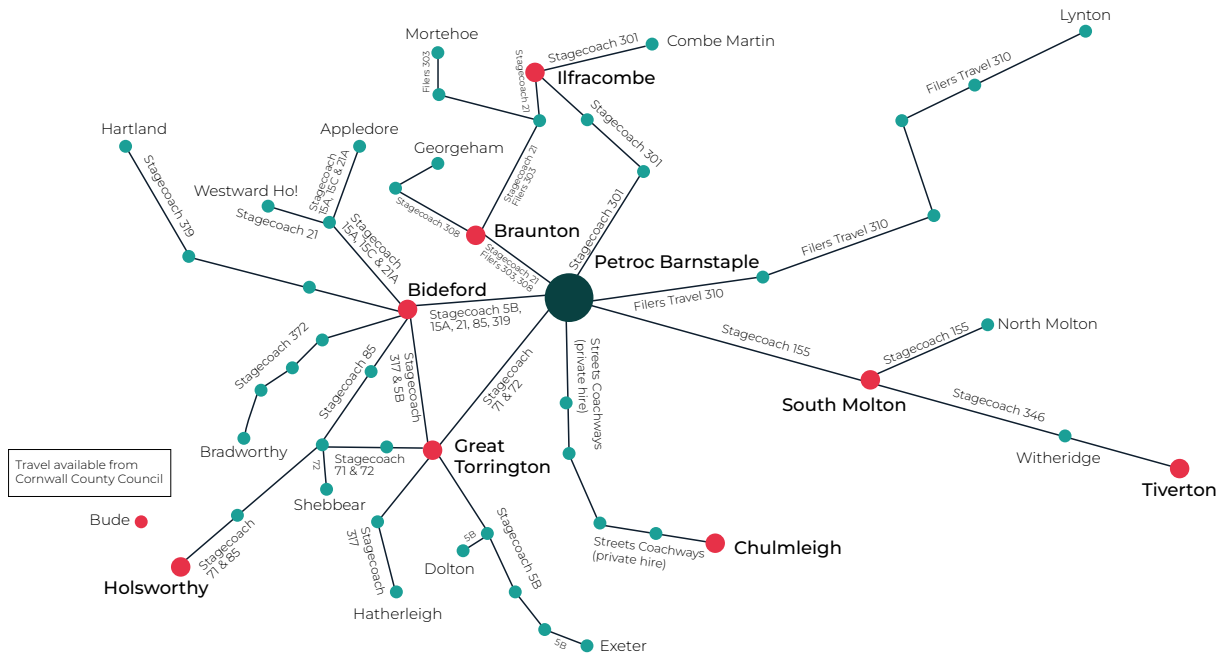
TRAVEL

Our college sites are situated on excellent bus routes with ample parking and plenty of cycle shelters at all of our campuses.

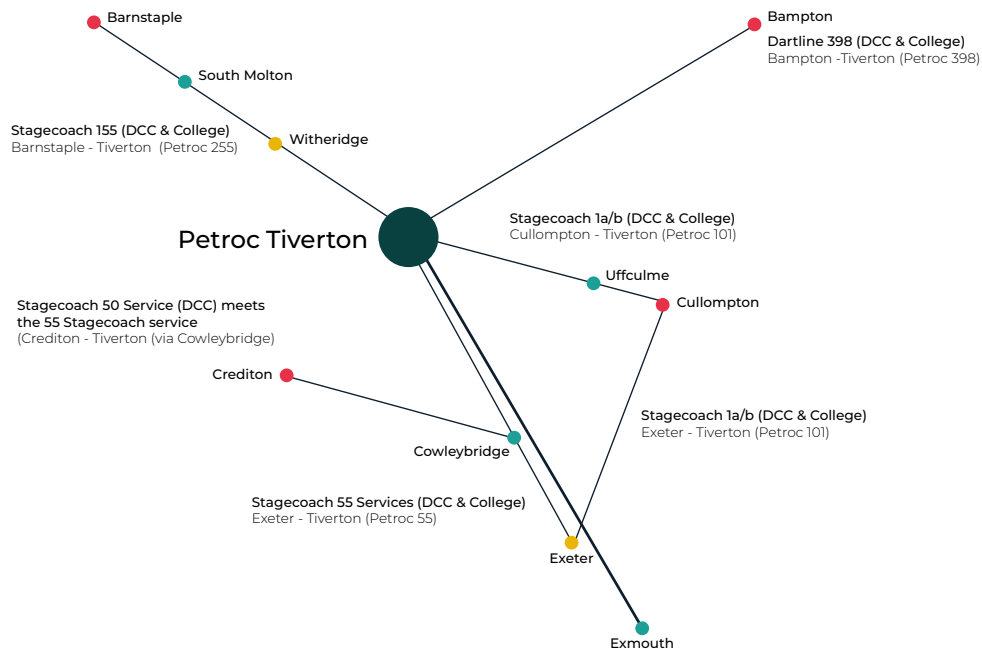
We encourage active and sustainable travel wherever possible and have some great bus pass schemes offering reduced or free travel.



BUS ROUTES - NORTH DEVON CAMPUS



BUS ROUTES - TIVERTON CAMPUS



Contact our friendly Advice & Guidance Team for more information:

North Devon: 01271 852422 | guidancecentre@petroc.ac.uk

Tiverton: 01884 235330 | guidancecentretiverton@petroc.ac.uk

HOW TO APPLY

COUNTDOWN TO COLLEGE

Applying for a course (or courses) at Petroc is simple! Once you've decided what you want to study, just follow the steps below. And then you can start your countdown to college!



1. Apply

Visit **petroc.ac.uk**, add your chosen course/s to your basket and complete the application form. You can apply for two vocational courses and/or 3 A Levels, so don't worry if you're still undecided on the route you would like to take. An email will then be sent to you to confirm your application and provide you with an interview date, so keep an eye on your personal emails.



2. Interview

You will be invited to an interview with the course lecturer to discuss your chosen course and to check if it is the right course for you. This is a chance to discuss your predicted grades and any queries you may have about life at Petroc.



3. Accept your Offer

Following your interview, you will be offered a conditional place on your chosen course, subject to gaining the entry requirements needed.



4. Results Day

Once you receive your results, make sure you input them into your myPetroc account to confirm your place. If you don't achieve your expected grades, please don't worry, simply contact us and we can discuss your options.



5. Enrolment

In August, you will attend an enrolment event to ensure you are ready to start your course. We will help you set up your student account, and receive your ID card. You'll also get your timetable before the start of term.



6. Starting College

Let the fun begin! The first few weeks may feel slightly overwhelming, but rest assured, we're here to support you every step of the way. If you begin your course and decide you want to change subjects, that's okay, we can swap you onto something else. There will also be loads of opportunities to meet new friends and join new clubs to help you get the most out of college life.

Top Tip: Use your personal email address to submit your application. Once you finish school you will not have access to your school email and may miss out on important information sent to you.

If you have any questions about any part of this process, just contact our Advice & Guidance Team.

FIND OUT MORE ONLINE
petroc.ac.uk

Find out
more!





UNIVERSITY CENTRE FOR NORTHERN DEVON



The University Centre for Northern Devon is a great place to study. The Centre offers expert teaching from highly qualified staff, passionate about helping you to achieve your best, alongside support from a friendly, dedicated team of specialist tutors.

With respected qualifications including executive courses, higher apprenticeships, HNCs, foundation degrees and honours degree top ups in a range of subjects, our courses have been designed with industry to provide the knowledge and skills you need to follow a career in your chosen field.

The University Centre also offers Access to Higher Education courses in health, sciences, humanities, digital and creative industries to provide a year of preparation for a higher education course - perfect if you do not have a Level 3 qualification (A Level or T Level) or if you require a higher tariff for entrance onto a degree-level course.

Whether you want to pursue a career in health and care, the digital and creative industries, engineering or business, our University Centre provides opportunities to extend your networks and experience through guest speakers, field trips, visits, internships and live project briefs.

Whatever your career and study goals, our lecturers and tutors can support you in developing the right skills and experience to achieve your full potential and realise your dream career.

For more information, visit petroc.ac.uk/university-centre



"I chose to study business degree because I had a great experience studying my A Levels and felt that I wanted to utilise the new University Centre to further my education without having to leave the local area or sacrifice current employment."

Abygail, Foundation Degree Business and BA (Hons) Professional Development (Business & Management)



DISCOVER MORE!

COURSES VALIDATED BY



**UNIVERSITY OF
PLYMOUTH**

OPEN EVENTS

Discover Petroc at one of our Open Events!

Open Events are the perfect opportunity to look around our vibrant campuses, ask questions about our courses, and learn more about what Petroc can offer you!

Come along to one of our events to find out more!

- Speak to our expert lecturers and learn about our courses, outstanding results and progression routes.
- Meet current students who will be able to give you a first-hand account of what it's like to study at Petroc.
- Tour our excellent facilities and see where you'll be studying, socialising, eating and relaxing.
- Get help and information from our friendly Advice & Guidance Team about transport, bursaries, the application process, and learning and pastoral support.

Our Open Events for this academic year will take place on the following dates:

North Devon Campus

Wednesday 6 November, 2024 - 5.00-8.00pm

Thursday 5 December, 2024 - 5.00-7.30pm

Wednesday 29 January, 2025 - 5.00-7.30pm

Saturday 22 March, 2025 - 10.00-1.00pm

Tiverton campus

Tuesday 12 November, 2024 - 5.00-7.00pm

Tuesday 21 January, 2025 - 5.00-7.00pm

Tuesday 25 March, 2025 - 5.00-7.00pm



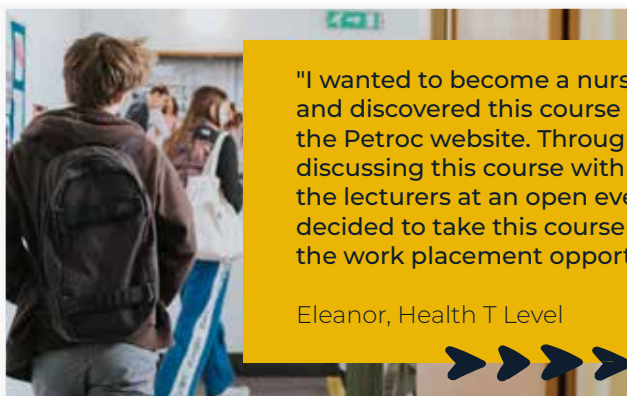
Visiting us on campus will give you a feel for student life and our exciting college community.



discover more!

"I wanted to become a nurse and discovered this course on the Petroc website. Through discussing this course with one of the lecturers at an open event, I decided to take this course due to the work placement opportunities."

Eleanor, Health T Level



PETROC OFFICIAL



PETROCOFFICIAL



PETROCTV



@PETROCOFFICIAL



IMPORTANT INFORMATION

Whilst every effort is made to ensure that this course guide is correct at the time of going to print, changes may occur to the courses/fees we offer and/or the services and facilities available.

Any changes may result in a difference to the course fee as advertised on our website (where the student is a fee payer).

In some cases where there are insufficient enrolments, you may be offered the chance to pay a higher fee for the course to continue.

Award and assessment fees are also subject to occasional changes by the Awarding Bodies.

You will be contacted should the amount change prior to starting the courses you have enrolled on. The college cannot guarantee that completion dates and result notifications for courses that require internal and external verification will always coincide with the end dates of the courses listed.

If you require this publication in other formats or in languages other than English, please contact our Advice & Guidance Team: (North Devon) **01271 852422** or (Tiverton) **01884 235200**.

Please refer to **petroc.ac.uk** for the most up-to-date information.

your future starts here))



NORTH DEVON CAMPUS

Old Sticklepath Hill
Barnstaple
Devon
EX31 2BQ
01271 345291

TIVERTON CAMPUS

Bolham Road
Tiverton
Devon
EX16 6SH
01884 235200

petroc.ac.uk



YouTube



WORLD
LAND
TRUST™

www.carbonbalancedpaper.com
CBP008067