

PETROC

TIVERTON
PROSPECTUS
2025/26



your future starts here

WELCOME TO PETROC

At Petroc Tiverton, we've designed a curriculum that offers high-quality further and higher education within a welcoming, community-driven setting.

We have focused our courses on the skills and qualifications most needed within the area, giving learners at Petroc great opportunities to get good quality local jobs.

Whether you're a school leaver seeking the right path for your future, or an adult learner aiming to enhance your skills or pivot to a new career, Petroc is here to support you at every stage.

We are committed to creating personalised learning experiences that lead to your success, supported by excellent facilities, outstanding guidance, and strong ties with local employers to help you achieve your desired outcomes.

At Petroc, you're more than just a number: you're a valued member of our community, one that's dedicated to helping you reach your goals, wherever your life and career ambitions may lead. Take charge of your future and let us help you shape it.



Dr Jason Jones
Deputy Principal

WHY STUDY AT PETROC?

We believe education goes beyond classrooms and coursework.

That's why we're committed to helping you develop skills and embrace meaningful opportunities, to set you on the pathway to an exciting and valuable career.

Whatever qualification you choose to study with us, we will provide you with a supportive environment, excellent facilities, expert lecturers, and great opportunities for work experience - all designed to enrich and build your skillset.

Our strong partnerships with local businesses will create opportunities for you to build prosperity in your community and pursue in-demand career pathways across a variety of sectors, in the local area and beyond.



Our students' safety and wellbeing will always be our top priority. At Petroc, we provide a supportive, caring and inclusive environment where every student is a valued member of our community.

Whether you require additional guidance and assistance with your studies or help with your personal wellbeing, we will work with you to find the right support to enhance your learning and help you to be the person you want to be.

EMPLOYABILITY: SIGHTLINES TO CAREERS

Embarking on a college course is the first step to gaining the experience and skills needed for a sustainable and rewarding career.

When you undertake a further or higher education course with us, you will have the chance to undertake meaningful work placements that will offer valuable insights and practical experience in your chosen field.

Your placement will help you to apply classroom learning, gain relevant knowledge, and develop essential life skills so that you are prepared for a sustainable career - whether that's in an office, workshop, laboratory, or care home.

EXCEPTIONAL FACILITIES

Our Tiverton campus boasts an enviable location, being close to the bustling town centre and just a stone's throw from the stunning Devon countryside.

Our Futures Hub building is home to our new Clinical Simulation Suite which provides true-to-life clinical environments, as well as a Fitness Centre filled with top-of-the-range equipment for cardio and weights.

The Digital Learning & Social Hub includes our high-tech virtual reality/augmented reality suite as well as learning pods, a library and areas for communal working. Our Construction Hub incorporates industry-standard carpentry workshops and bricklaying stations full of high-spec tools and equipment.

Our Learner Success Hub, which is a dedicated space for learners with Special Educational Needs and Disabilities (SEND), is home to a teaching kitchen, cafe, therapy room, sensory garden, quiet rooms and independent living environments.

FACULTY & TEACHING STAFF

Our dedicated teaching staff are all subject specialists with a wealth of skills and knowledge.

They are committed to helping you develop the abilities and qualities needed for your future career.

All are here to share their unique knowledge, know-how and industry insights to inspire, challenge and support you.

DIGITAL EXPERTISE

At Petroc, we make sure our students develop workplace-ready digital skills and gain familiarity with the real-world tools and platforms used by employers.

You will have access to unique digital learning opportunities, including Extended Reality (AR, VR, MR and XR) to complement face-to-face experiences. These include Virtual Job Interview Simulator for refining interview skills and subject-specific VR explorations - all supported by our dedicated Digital Learning Team.

STUDENT LIFE

Petroc offers a wide range of enrichment opportunities to our full-time learners.

They will enable you to pursue personal interests or support your individual ambitions and have been designed to support and complement your learning and develop your confidence in a safe, enjoyable and supportive environment.

We've got a fantastic array of clubs and activities for you to get involved in including, book club, LGBT+ group, sports and music clubs. You could even volunteer to be a reporter on our student newsletter 'The Vision'!

PROGRESSION

At Petroc, we're passionate about supporting our students throughout their individual learning journey and beyond.

During your time with us, we will help you explore your interests, aspirations and relevant career pathways so that you can make the right choices for you and your future.

And if you aren't sure what your pathway is yet, don't worry - we'll help spark your curiosity and get you moving in the right direction, whether that's further studies, an apprenticeship, or a new career.

QUALIFICATIONS AND LEVELS - MAKING THE RIGHT DECISION

There are a number of different qualifications available to you at Petroc. We're here to help you choose the route that is most suitable for your needs and aspirations.

Our dedicated Advice & Guidance Team can talk you through the options available to you or you can find a detailed explanation of qualifications and levels at petroc.ac.uk/which-course.

Entry Level:

Entry Level courses give you access to Level 1 qualifications and employment. Qualifications include personalised outcomes to enable you to progress.

Entry requirements:

For all learners joining Entry Level Study Programmes, there are **no formal entry requirements**, however, you will have a one-to-one interview to discuss your personal learning needs. You will also be required to study English and Maths at an appropriate level to suit your ability.

Level 1:



Level 1 courses offer you the opportunity to acquire a broad range of knowledge and practical skills that are not taught in school which will allow you to enter a trade or profession, such as carpentry and construction.

Completing a Level 1 qualification will give you access to Level 2 opportunities, apprenticeships and employment.

Entry requirements:

You must hold **four GCSEs at Grade 2 or equivalent** (or above), preferably including Maths and English.

If you do not have a GCSE Grade 4 in Maths and/or English, you'll continue studying these subjects alongside your chosen course/s.

At the end of the year, you are expected to have completed and achieved all the components of your Level 1 Study Programme and improved your Maths and English skills (where applicable) before progressing on to your next course.

Level 2:

Level 2 qualifications will start to provide further focus on a subject that can support the transition to a Level 3 industry-relevant qualification or employment.

Entry requirements:

All entrants must hold **four GCSEs at Grade 3 or equivalent** (or above), preferably including **GCSE Maths and English**. If you do not have a GCSE Grade 4 in Maths and/or English, you will continue studying these subjects alongside your chosen course/s.

At the end of the year, you are expected to have completed and achieved all the components of your Level 2 Study Programme and improved your Maths and English skills before progressing on to your next level course.



Find out
more



Level 3:

Level 3 qualifications will set you on a path to university, higher apprenticeships or employment.

Entry requirements:

To be accepted onto a Level 3 programme, you must hold **at least five GCSEs at Grade 4 or above, including GCSE Maths and English Language.**

Certain subjects will require higher grade profiles - these are outlined in more detail on our website.

LEVELS 4-6 are university-level qualifications:

We have been delivering a range of degree-level courses and qualifications for over 30 years and provide a wide variety of degree-level programmes in subject areas ranging from education, computing, science, engineering, and health & social care. Find out more at petroc.ac.uk/university-centre

Level 4:

Foundation degree (Year 1), honours degree (Year 1), higher apprenticeship, degree apprenticeship, HNC, professional qualifications.

Level 5:

Foundation degree (Year 2), honours degree (Year 2), higher apprenticeship, degree apprenticeship, professional qualifications.

Level 6:

Honours degree (Final Year), degree apprenticeship.



The entry requirements detailed are a guide. During the application process, we will ask you about your predicted grades and these will be used to offer you the most appropriate level course. If you then achieve a higher or lower grade we may adjust the level of your course accordingly to help you to attain your best result. Some courses require specific or additional grades – please see the individual course details for more information. As always, further information and help can be found on our website or you can contact our dedicated Advice & Guidance Team.



**FURTHER COURSE OPPORTUNITIES
AVAILABLE AT OUR NORTH DEVON CAMPUS**



SPECIALIST AREAS

At Petroc, we pride ourselves on providing inclusive, bespoke education opportunities tailored to the needs of our learners, with courses that reflect the business and industry needs of Tiverton and the surrounding areas.

Over the years, we have built and maintained strong relationships with a large number of businesses, organisations and charities in our community. These valuable partnerships have informed and shaped our learning environment and the education experience we offer at Petroc.



CONSTRUCTION

FOUNDATION LEARNING

HEALTH & SOCIAL CARE

PREPARATION FOR ADULthood



We have a wide range of additional courses available at our North Devon Campus in Barnstaple. Students from Tiverton High School, Uffculme School and Cullompton School who will be travelling more than three miles from home to study a Petroc course - either in Tiverton or Barnstaple - are eligible for a free Stagecoach SW Gold term-rider student bus pass.

DEVELOPMENT

SUPPORT

POTENTIAL

 FURTHER COURSE OPPORTUNITIES
AVAILABLE AT OUR NORTH DEVON CAMPUS

HOW TO APPLY

Applying for a course (or courses) at Petroc is simple! Once you've decided what you want to study, just follow the steps below. And then you can start your countdown to college!



1. Apply

Visit **petroc.ac.uk**, add your chosen course/s to your basket and complete the application form. You can apply for two vocational courses and/or 3 A Levels, so don't worry if you're still undecided on the route you would like to take. An email will then be sent to you to confirm your application and provide you with an interview date, so keep an eye on your personal emails.



2. Interview

You will be invited to an interview with the course lecturer to discuss your chosen course and to check if it is the right course for you. This is a chance to discuss your predicted grades and any queries you may have about life at Petroc.



3. Accept your Offer

Following your interview, you will be offered a conditional place on your chosen course, subject to gaining the entry requirements needed.



4. Results Day

Once you receive your results, make sure you input them into your myPetroc account to confirm your place. If you don't achieve your expected grades, please don't worry, simply contact us and we can discuss your options.



5. Enrolment

In August, you will attend an enrolment event to ensure you are ready to start your course. We will help you set up your student account, and receive your ID card. You'll also get your timetable before the start of term.



6. Starting College

Let the fun begin! The first few weeks may feel slightly overwhelming, but rest assured, we're here to support you every step of the way. If you begin your course and decide you want to change subjects, that's okay, we can swap you onto something else. There will also be loads of opportunities to meet new friends and join new clubs to help you get the most out of college life.

Top Tip: Use your personal email address to submit your application. Once you finish school you will not have access to your school email and may miss out on important information sent to you.

If you have any questions about any part of this process, just contact our Advice & Guidance Team.

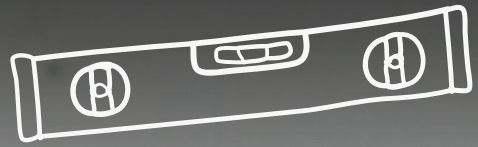


Find out more!



MAXIMUM FOUR-DAY TIMETABLE
FOR FULL-TIME LEARNERS

CONSTRUCTION



*discover
more!*

FIND OUT MORE ONLINE
petroc.ac.uk



FURTHER COURSE OPPORTUNITIES
AVAILABLE AT OUR NORTH DEVON CAMPUS



"This course was quite challenging at first but is 100% worth it in the end."

Theo, Construction Level 1 (Former student at Tiverton High School)



WHAT CAN I EXPECT?

Highly qualified and industry-experienced construction workers are in high demand. If you have a passion for building, creating or designing, Petroc has a construction course for you!

The construction industry incorporates a hugely diverse range of roles from trowel trades through to architecture and design. These are valuable and in-demand skills and our teaching structure will help you find the right career pathway to suit your ambitions.

On campus, we have a range of workshop spaces for each of our trade courses, all fully equipped with cutting-edge tools, machinery and environmental technology. We are embracing the future of construction with a keen eye on green technology and incorporating the retrofit concept for the future.

Throughout your studies, you will develop important hands-on, technical and practical skills from our highly skilled lecturers who have a wealth of industry experience. They will support and guide you throughout your journey and help you achieve the highest standards in your chosen area.

Whether your ambition is to start your own business locally or work for a larger multinational contractor, the skills you learn at Petroc will provide you with a career for the future.



225,000 additional workers will be required to meet UK construction demand by 2027¹



The average annual salary for a Carpenter is **£45,575**²

¹ citb.co.uk

² Indeed.com



Future Careers...

Giving you the skills you need to succeed, whatever your ambition:

- Building Surveyor
- Construction Manager
- Construction Site Worker
- Estates Manager
- Quantity Surveyor
- Site Engineer



BRICKLAYING

Level 1 | Duration: 1 year

 Tiverton | FTT074

 Full-time

This programme provides an introduction to the bricklaying industry. It has been crafted to provide you with core knowledge of the industry as well as maximum exposure to the skills you will experience at work or within further study at Petroc.

The course delivers the Level 1 Certificate in Construction Skills (Bricklaying).

You will study the following units:

- Introduction to the construction industry
- Introduction to health and safety
- Introduction to brick and block walling

You will also undertake a tutorial programme, gain support with developing your study skills, and have the opportunity to improve your GCSE Maths and English grades.

ENTRY REQUIREMENTS

You must hold four GCSEs at grade 2, preferably including Maths and English. If you do not have a GCSE grade 4 in Maths and/or English, you'll continue studying these subjects alongside your course.


PROGRESSION

Upon successful completion of this course, you can progress onto one of our Level 2 construction courses or undertake an apprenticeship.

BRICKLAYING

Level 2 | Duration: 1 year

 Tiverton | FTT312

 Full-time

This Level 2 Diploma in Bricklaying is aimed at anyone looking to work in the construction industry - specifically as a craftsperson in bricklaying.

A bricklayer has the skills and knowledge to build or repair walls in accordance with construction plans. They may also build or refurbish arches or other structures, therefore they play an important part of any construction team.

You will study the following modules:

- Principles of construction
- Building cavity walls
- Building solid walls and piers
- Constructing basic arches
- Setting outbuildings

You will also undertake structured work experience or work placements within a relevant business.

ENTRY REQUIREMENTS

You must hold four GCSEs at grade 3 or above, preferably including GCSE Maths and English.

PROGRESSION

This course is aimed at anyone interested in going on to study a Level 3 construction course or apprenticeship.

CARPENTRY & JOINERY

Level 1 | Duration: 1 year

 Tiverton | FTT080

 Full-time

This programme provides an introduction to the carpentry industry. It has been crafted to provide you with core knowledge of the industry as well as maximum exposure to the skills you will experience at work or within further study at Petroc.

The course encompasses a Level 1 qualification in carpentry and joinery.

You will study the following units:

- Introduction to the construction industry building principles
- Introduction to health and safety
- Introduction to carpentry and joinery
- Joints
- Timber technology
- Methods of frame construction

You will also undertake a tutorial programme, gain support with developing your study skills, and have the opportunity to improve your GCSE Maths and English grades.

ENTRY REQUIREMENTS

You must hold four GCSEs at grade 2 or above, preferably including Maths and English. If you do not have a GCSE grade 4 in Maths and/or English, you'll continue studying these subjects alongside your course.


PROGRESSION

Upon successful completion of this course, you can progress onto a Level 2 construction course or undertake an apprenticeship.

CARPENTRY

Level 2 | Duration: 1 year

 Tiverton | FTT313

 Full-time

This Level 2 Diploma in Carpentry will enable you to study theoretical aspects of carpentry and apply them to practical tasks.

You will study the following modules:

- The principles of construction
- Structural carpentry
- Non-structural carpentry prior to plastering
- Non-structural carpentry following plastering
- Timber technology and the use of circular saws

You will also undertake structured work experience or work placements within a suitable business.

ENTRY REQUIREMENTS

You must hold four GCSEs at grade 3 or above, preferably including GCSE Maths and English.

PROGRESSION

This course is aimed at anyone interested in going on to study a Level 3 construction course or apprenticeship.

CRAFT CARPENTRY AND JOINERY APPRENTICESHIP

We offer two apprenticeships relating to construction:

Level 2 Carpentry and Joinery (Site Carpentry) and **Level 3 Craft Carpentry and Joinery**.

Apprenticeships blend classroom learning with on-the-job training, meaning you can earn while you learn. You will usually spend four days in the workplace as a paid employee, with one day in the classroom where you will reinforce and further develop your skills and workplace learning.

During your apprenticeship, you will be expected to undertake a range of predefined knowledge, skills and behaviours which will relate to your chosen construction programme.

Depending on the level, an apprenticeship lasts between one and two years and can start at various points in the year.

ENTRY REQUIREMENTS

Each apprenticeship will have its own specific entry requirements; you can find out more on our website.

PROGRESSION

An apprenticeship is a great pathway to a rewarding and successful career, or can be a stepping stone to a higher-level programme.

You can find out more about our apprenticeships at petroc.ac.uk/apprenticeships

If you aren't sure which sector you want to work in, or are unable to secure an apprenticeship, you may wish to undertake a Traineeship. For more information about Traineeships, contact our Advice & Guidance Team.

FOUNDATION LEARNING



discover more!

FIND OUT MORE ONLINE
petroc.ac.uk

"During his time on the Project SEARCH programme, Adam worked hard to develop his skills and knowledge, taking advantage of every opportunity that was presented to him. Adam's hard work paid off. He secured employment at the Royal Devon and Exeter Hospital in the medical device library, where he is responsible for cleaning and delivering equipment throughout the hospital."

Tom Webb, Lecturer

WHAT CAN I EXPECT?

Petroc's Foundation Learning programmes are designed for individual learners who are still exploring ideas about their career pathway, and would benefit from a supportive and positive learning environment.

Throughout your chosen course, our experienced tutors will support and encourage you to develop essential skills, helping you to build your confidence and make the right choices about your future career or academic pathway.

You will also have the opportunity to experience a variety of educational visits and group/community-based activities which will give insight into real-world scenarios, which includes national and international residentials. These experiences will help you work towards independence as well as adding value to your CV.



Gain **CONFIDENCE AND SKILLS** to enable progression to employment

At the end of your programme, you will attend personalised celebrations marking your achievements.

There are no entry requirements for our Foundation Learning programmes; however, you must be willing and able to learn and engage in a variety of vocational and personal development activities.

So whether you are still considering your career options or want to expand and develop your workplace and personal skills, a foundation learning course could be perfect for you!



The average annual salary for a Healthcare Assistant is **£23,707¹**



The average annual salary for a Barber is **£25,346¹**

¹ Indeed.com



Future Progression...


Past learners have progressed onto **Health & Social Care** and **Construction** courses.



FUNCTIONAL SKILLS ENGLISH (ONLINE)

Level 1 | Duration: 30 weeks

 Tiverton | PTB623

 Part-time

This online independent study course is designed for anyone who wants to improve their English skills for either the workplace or further study.

You will cover a variety of topics designed to help you improve your understanding of different texts and improve your spelling, punctuation and grammar to enable you to write confidently and effectively in a range of situations such as emails, letters and reports.

You will also work on communication skills which are vital transferable skills for the workplace.

ENTRY REQUIREMENTS

You will sit an initial assessment to check if this is the right level course for you.

PROGRESSION

Gaining Functional Skills English Level 1 can open up further courses to you - including Level 2 English - as well as supporting you in progressing in the workplace.

FUNCTIONAL SKILLS ENGLISH (ONLINE)

Level 2 | Duration: 30 weeks

 Tiverton | PTB622

 Part-time

This online independent study course is designed for anyone who wants to improve their English skills for either the workplace or further study.

You will cover a variety of topics designed to help you improve your understanding of different texts and improve your spelling, punctuation and grammar to enable you to write confidently and effectively in a range of situations such as emails, letters and reports.

You will also work on communication skills which are vital transferable skills for the workplace.

ENTRY REQUIREMENTS

You will need a Level 1 English qualification or evidence of working at this level.

PROGRESSION

Functional skills English Level 2 is a key qualification for employment, further and higher education.

FUNCTIONAL SKILLS MATHS (ONLINE)

Level 1 | Duration: 30 weeks

 Tiverton | PTB620

 Part-time

This online independent study course covers skills that are needed in everyday life and working environments.

During the course, you will study the following topics:

- Addition, subtraction, multiplication and division
- Fractions
- Decimals
- Percentages
- Data analysis
- Measurement
- Probability

ENTRY REQUIREMENTS

You will sit an initial assessment to check if this is the right level course for you.

PROGRESSION

Gaining Functional Skills Maths Level 1 can open up further courses to you - including Level 2 Maths - as well as supporting you in progressing in the workplace.

FUNCTIONAL SKILLS MATHS (ONLINE)

Level 2 | Duration: 30 weeks

 Tiverton | PTB619

 **Part-time**

This online independent study course covers the skills that are needed in everyday life and working environments.

During the course, you will study the following modules:

- Fractions
- Decimals
- Percentages
- Data analysis
- Measurement
- Probability

ENTRY REQUIREMENTS

You will need a Level 1 Maths qualification or evidence of working at this level.

PROGRESSION

Functional Skills Maths Level 2 is a key qualification for employment, further and higher education.

PROJECT SEARCH (EXETER)

Level 1 | Duration: 10 weeks

 Tiverton | FTT305

 **Full-time**

Project SEARCH is a supported internship for people with a learning disability or Autistic Spectrum Condition who want a job.

As an intern, you will undertake three 10-week placements at Royal Devon and Exeter Hospital, where you will take on a real role in the hospital. The programme runs five days a week and is supported by two full-time Project SEARCH staff as well as mentors.

At the start of the course, you will receive all the training necessary to be safe and professional within the hospital grounds.

ENTRY REQUIREMENTS

There are no formal entry requirements, however, you will have a one-to-one interview to discuss your personal learning needs.

PROGRESSION

Most students gain employment either after finishing the programme or during the programme.

SUPPORTED INTERNSHIP

Entry Level | Duration: 1 year

 Tiverton | FTT001

 **Full-time**

Supported Internships are for young people aged 16 to 18 with learning difficulties or disabilities, who want to move into employment and need extra support to do so.

The structured study programme reflects the following principles:

- On-the-job training with a local employer supported by expert job coaches
- An employability programme looking at the soft skills of employment
- Vocational profiling to identify skills and qualities
- The opportunity to study for relevant qualifications

ENTRY REQUIREMENTS

There are no formal entry requirements, however, you will have a one-to-one interview to discuss your personal learning needs. You will also be required to study English and Maths at an appropriate level to suit your ability.

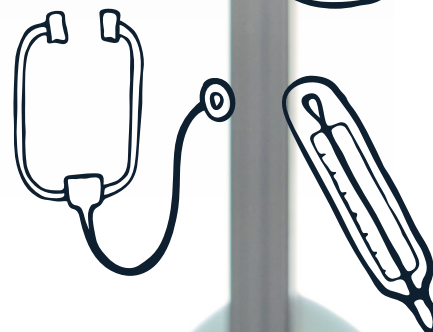
PROGRESSION

Upon completion of the course you should be able to move into paid employment, further training, supported employment or an apprenticeship.

HEALTH & SOCIAL CARE



FURTHER COURSE OPPORTUNITIES
AVAILABLE AT OUR NORTH DEVON CAMPUS



discover more!

FIND OUT MORE ONLINE
petroc.ac.uk



"Within the first two weeks I absolutely fell in love with the subject and knew it was a path I wanted to take."

Willow, Health & Social Care Level 3 (Former student at Tiverton High School)



WHAT CAN I EXPECT?

A career in health and social care is one of the most rewarding, valuable and in-demand professions. As a sector, health and social care is one of the largest in the country covering a huge range of roles in a wide variety of settings with jobs ranging from midwifery to speech and language therapy.

Our health and social care programmes deliver the vital skills needed to work in this sector and prepare you to step into roles that really make a difference.

Alongside your essential knowledge base, you'll develop teamwork, communication, and research skills, helping you to liaise and work effectively with individuals, clients, parents/guardians and other care professionals.

Work experience placements are crucial in the health and social care sector and offer vital real-life learning opportunities to refine your abilities.

You'll have the chance to experience working in settings including SEN (Special Educational Needs) schools, hospitals, hospices and nursing homes, looking at all aspects of health and social care work and exploring what works for you.

Our team of dedicated lecturers, with years of professional experience, will support you throughout your learning and during your placements.

On completing your course, you may wish to step straight into a job, or you may decide to further develop your skills on a degree-level programme.

Results on all of our health and social care courses are excellent, with the vast majority of learners who apply for a healthcare-related degree being offered a place at university.



The UK will need over **1.2 MILLION** health and social care associate professionals by 2035.¹



The average annual salary for a Speech and Language Therapist is **£39,900**²

¹ universitiesuk.ac.uk

² Indeed.com



Future Careers...

Preparing you for roles that make a positive difference:

- Care Manager
- Cognitive Behavioural Therapist
- Community Development Worker
- Counsellor
- Social Worker
- Youth Worker



HEALTH & EDUCATION

Level 1 | Duration: 1 year

 Tiverton | FTT315

 Full-time

This programme provides an introduction to health and social care and early years education. It has been crafted to provide you with core knowledge of the industry as well as maximum exposure to the skills you will experience at work or within further study at Petroc.

The course delivers the Level 1 Certificate in Introduction to Health, Social Care & Children & Young People's Settings.

You will study the following units:

- Health and safety when with young children
- Growth and development of young children
- Communication
- Principles and values

You will also undertake a tutorial programme, gain support with developing your study skills, and have the opportunity to improve your GCSE Maths and English grades.

ENTRY REQUIREMENTS

You must hold four GCSEs at grade 2 or above, preferably including Maths and English. If you do not have a GCSE grade 4 in Maths and/or English, you'll continue studying these subjects alongside your course.

PROGRESSION

Upon successful completion of this course, you can progress onto a Level 2 course in Health & Social Care or Education & Childcare, or an apprenticeship.

ACCESS TO HIGHER EDUCATION: DIPLOMA IN HEALTH PROFESSIONS

Level 3 | Duration: 1 year

 Tiverton | FTT128L

 Full-time

If you want to pursue a higher education qualification in the health sector, but lack the necessary qualifications, this Access to Higher Education Diploma could be for you.

It will give you the skills and knowledge you need to progress into further study and pursue a profession in the health sector.

During the course you will learn the following topics:

- Biology
- Psychology
- Sociology
- Study Skills

You will also have dedicated tutorial sessions, where you will receive support throughout your year of study including guidance and support for your UCAS application to university.

ENTRY REQUIREMENTS

You will need at least grade C/4 in GCSE Science. You must be aged 19 or over.

PROGRESSION

This programme will enable you to progress on to a foundation degree or full honours degree and pursue a career such as a nurse, midwife or paramedic.

FDSC ASSISTANT PRACTITIONER: HEALTH AND SOCIAL CARE - HIGHER APPRENTICESHIP

Level 5 | Duration: 2 years

 Tiverton | AT121

 Full-time

This course, awarded by the University of Plymouth, consists of 12 subject modules, and each module has two assessed assignments.

During the course, you will study the following modules:

- Foundations of health and social care practice
- Concepts of health and wellbeing
- Human growth and development
- Vocational competence for health and social care practice
- The patient journey and care process
- Evidence-based practice
- Leadership and ethics in practice
- Clinical competence and patient assessment

You will also choose two optional modules.

ENTRY REQUIREMENTS

You must hold a Level 3 QCF Health and Social Care or equivalent, a Level 2 GCSE grade C/4 or above in English and Maths, and a Care Certificate.


PROGRESSION

Upon successful completion of this programme, you could progress onto a BA (Hons) degree.

FOUNDATION DEGREE HEALTHCARE ASSISTANT PRACTITIONER

Level 5 | Duration: 2 or 3 years

 Tiverton | HET121F/HET121P

 Full-time or Part-time

This course, awarded by the University of Plymouth, consists of 12 subject modules:

- Foundations of health and social care practice
- Concepts of health and wellbeing
- Human growth and development
- Vocational competence for health and social care practice
- Understanding practice
- The patient journey and care process
- Evidence-based practice
- Leadership and ethics in practice
- Clinical competence and patient assessment
- Public health and health promotion

You can also select two further optional modules.

ENTRY REQUIREMENTS

You must hold a Level 3 QCF Health and Social Care or equivalent, a Level 2 GCSE grade C/4 or above in English Language and Maths, and a Care Certificate.


PROGRESSION

Upon successful completion of this programme, you could progress onto a BA (Hons) degree.

FOUNDATION DEGREE PSYCHOLOGICAL STUDIES

Level 5 | Duration: 2 or 3 years

 Tiverton | HET120F/HET120P

 Full-time or Part-time

This foundation degree, in partnership with the University of Plymouth, can provide you with the skills needed in a range of careers such as teaching, research, counselling, HR and social work.

During the course, you will study the following modules:

- Social, developmental and behavioural psychology
- Cognitive and biological psychology
- Social development of children
- Psychology of health and illness
- Psychopathology

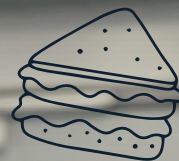
ENTRY REQUIREMENTS

You will need 48 UCAS points and GCSE Maths and English Language at grade C/4 or above. Applications from mature students with relevant experience are also welcome. While many applicants will have passed academic examinations, we will often take a wider and more flexible view of your skills or potential.

PROGRESSION

This course could lead to the one-year top-up BA (Hons) Human Behavioural Studies degree, or an alternative degree course.

PREPARING FOR ADULTHOOD



discover more!



MAXIMUM FOUR-DAY TIMETABLE
FOR FULL-TIME LEARNERS

FIND OUT MORE ONLINE
petroc.ac.uk



"During his time at Petroc, Keir learned a wide range of skills which helped him transition into adulthood and pursue his dream career as an actor and dancer. Keir has already appeared in a fashion photo shoot and music videos. When he isn't performing, he works part-time for a local farm shop and at RHS Rosemoor. We are delighted to see how far Keir has progressed since his time at Petroc. He has such a wonderful way with people and it's fantastic to see his confidence shine both on and off screen!"

Toby Di Georgio, Faculty Manager

WHAT CAN I EXPECT?

At Petroc, we provide learning opportunities that cater to a wide range of needs and abilities. We are here to help broaden horizons and empower individuals to reach their full potential, through a supportive and inclusive learning environment where every student can thrive.

We have an established and highly regarded Special Educational Needs and Disability (SEND) provision and specialist support that assists learners with additional needs in their education goals and career ambitions.

Our experienced team supports learners as they move on from their school environment, by providing safe surroundings and an exciting and challenging curriculum that encourages them to become more independent and confident.

With unique facilities such as our cafés, gardens and spaces for enterprise-driven craft and skill development, we provide places where students can feel comfortable and confident and where their learning and social skills can flourish.

Our Preparing for Adulthood courses facilitate a transition for learners into adulthood, being actively involved in their local community through a journey based on their individual needs and aspirations.

We give our learners the time they need to develop skills, investigate employability options, and work towards their chosen vocation, whilst being continually supported and encouraged by our dedicated team.



Future Progression...

Learners have progressed into careers and/or courses in **performing arts, motor vehicle, childcare, horticulture and catering.**

FOUNDATION YEAR

Entry Level | Duration: 1 year

Tiverton | **FTT307**

Full-time

This Foundation Year course is a tailored programme to meet the educational and support needs of Pre-Entry and Entry Level learners. It covers the four outcomes that young people with disabilities have said are important to them: Employment, Independent Living, Community Inclusion and Good Health.

The course will include the following elements:

- Nurturing day-to-day skills for living with increasing independence.
- Developing relevant skills needed for employment.
- Activities, visits and trips.
- Work experience opportunities.
- Opportunities to integrate with mainstream students.
- Enrichment activities including sports, arts and crafts, performing arts and swimming.

ENTRY REQUIREMENTS

There are no formal entry requirements, however, you will have a one-to-one interview to discuss your personal learning needs. You will also be required to study English and Maths at an appropriate level to suit your ability.

PROGRESSION

Upon completion of this course, you can progress towards further education, employment, independent living and participation in the community.

ADDITIONAL COURSE OFFERINGS AT OUR NORTH DEVON CAMPUS

We offer a wide range of additional courses at our North Devon Campus in Barnstaple. And they're just a free* bus ride away!

For more information, just visit petroc.ac.uk or call our Advice & Guidance Team on 01271 852422.

A LEVELS

A Levels (Creative Industries)

A Levels (Maths & Science)

A Levels (Languages & Communication)

A Levels (Social Sciences)

VOCATIONAL, T LEVEL & APPRENTICESHIP PROGRAMMES

Animal & Conservation

Hair & Beauty

Business & Management

Health & Social Care

Construction

Hospitality & Catering

Creative Industries

Motor Vehicle

Digital & Technologies

Preparing For Adulthood

Education & Childcare

Public Services & Outdoor Adventure

Electrical & Plumbing

Science

Engineering & Manufacturing

Sport, Health & Fitness

Foundation Learning



"Petroc has great facilities and staff for everything you may encounter through studying, and everyone is willing to help and be supportive - it's a really nice feeling."

Eden, Barbering Level 2, North Devon Campus





FIND OUT MORE ONLINE
petroc.ac.uk



MAXIMUM FOUR DAY TIMETABLE
FOR FULL-TIME LEARNERS



SUPPORTING YOU & YOUR LEARNING

Starting college can feel both exciting and daunting. With new buildings to navigate, lecturers to meet and friends to make, it's perfectly normal to feel a bit nervous. But college is also a place where you should feel free to grow, reinvent yourself and meet like-minded people who share your passions and interests.

Petroc is committed to ensuring you learn in a safe and friendly environment by providing the support you need to shine. We're here to help you succeed during your time here with us and into the future.

ACCESSIBILITY

We're here to make your life easier so that you can focus on your learning and personal development.

Our campuses are accessible for wheelchair users with ramps and lifts situated throughout the college. We have assistive technology across all curriculum areas and we complete Learning Inclusion Plans with you to ensure that any learning needs you tell us about have strategies and resources in place.

ADDITIONAL LEARNING SUPPORT

Our experienced teams are on hand to help you with any specific learning needs and/or disabilities you may have.

Our SEND team will coordinate support for students with Education, Health and Care Plans (EHCPs) and the college has designated areas and staff to support neurodiversity.

CHILDCARE

'Care to Learn' is a Government run scheme for students who need childcare support and who are under 20 years old at the start of their course.

This initiative provides financial assistance to eligible students to help cover the costs associated with childcare services, enabling them to pursue their academic goals. Please contact the Advice & Guidance Team for more information.

FINANCIAL SUPPORT

Education is free for all students who are aged 16-18 (on 31 August of the year you start your course). There may be additional costs for books or travel, but please do not let money matters stop you from coming to college.

If you are aged 19 or over, you may have to pay to study, however, there may be funding options or free courses available to you.

We're here for every learner, so if you need financial assistance to cover the costs of studying or travel, we may be able to help. Look for more details about bursary funds, loans or bus passes on our website, or call and speak to our friendly Advice & Guidance Team for more information.



SAFEGUARDING AND WELLBEING

The protection, safety, health, wellbeing and welfare of all learners is of paramount importance at Petroc.

We follow the statutory guidance and recognise our responsibility to safeguard and promote the welfare and wellbeing of children and young people, as well as our adult learners. We are committed to a 'whole college approach' to safeguarding. To this end, we ensure that all staff are trained in Safeguarding and Child Protection and in preventing radicalisation.

The college also provides a comprehensive wellbeing and welfare service to all students. This includes support for housing, financial needs, and the physical and emotional safety, wellbeing and welfare of our learners, all of which can impact a student's ability to study.

Petroc is an open and inclusive college that values diversity and prides itself on zero tolerance towards discrimination of any kind.

Our commitment is that every student at Petroc will have the support and tools needed to achieve their fullest potential in both their personal and educational journey.

SUSTAINABILITY

At Petroc, we're passionate about sustainability. We believe that there will be no greater challenge to our global future than the current climate emergency.

As a college, we are committed to ensuring that we continuously improve the way our organisation approaches issues of sustainability. We do our part to protect the wider environment by embedding principles and practices that build awareness, highlight responsibilities and meet our own sustainability standards.

Our Sustainability Group meets on a regular basis to discuss cross-college activity, share ideas and consider future initiatives which have included a tree-planting exercise, a pollinator project, sustainability seminars and various on-campus developments to reduce waste and improve energy efficiency. We are also actively committed to the UN Sustainable Development Goals.

TRAVEL

Petroc Tiverton has an enviable location and benefits from easily accessible bus, train and road links. We have ample parking, plenty of cycle shelters and encourage active and sustainable travel wherever possible.

If you are a student from Tiverton High School, Uffculme School and Cullompton School and will be travelling more than three miles from home to study a Petroc course - either in Tiverton or North Devon - you will be eligible for a free Stagecoach SW Gold term-rider student bus pass.

For more travel information and information on bus passes, please visit petroc.ac.uk/travel or contact our Advice & Guidance Team.

YOUNG ADULT CARERS

If you care for a family member who has a disability, a longterm serious illness, or a substance misuse problem, you may be a young adult carer.

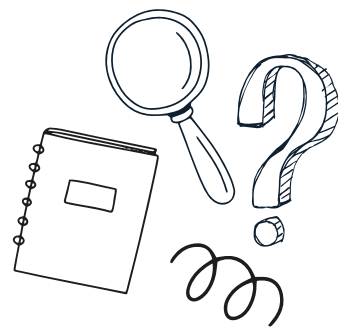
Petroc is committed to helping young adult carers throughout their college experience and understands that looking after a loved one whilst also being a student can be challenging.

We can provide one-to-one personal and academic support, advice and guidance; quiet space to make urgent phone calls; referrals to local services; and, support from our wellbeing team.

Contact our friendly Advice & Guidance Team for more information:

01884 235245 | guidancecentretiverton@petroc.ac.uk

OPEN EVENTS



Open events are the best way to get an insight into life at Petroc, ask questions and find out more about what we can offer you. Come along to one of our events to find out more information:

- Speak to our expert lecturers and find out more about our courses, outstanding results and progression routes.
- Meet current students who will be able to give you a first-hand account of what it's really like to study at Petroc.
- Tour our excellent facilities and see where you'll be studying, socialising, eating and relaxing.
- Get help and information from our friendly Advice & Guidance Team about transport, bursaries, the application process, and learning and pastoral support.

Our Tiverton Open Events for this academic year will take place on the following dates:

Tuesday 12 November, 2024 - 5.00-7.00pm

Tuesday 21 January, 2025 - 5.00-7.00pm

Tuesday 25 March, 2025 - 5.00-7.00pm

Find out more at
petroc.ac.uk/open-events



discover more!



PETROC OFFICIAL



PETROCOFFICIAL



PETROCTV



@PETROCOFFICIAL

FIND OUT MORE ONLINE
petroc.ac.uk

#discover
PETROC

IMPORTANT INFORMATION

Whilst every effort is made to ensure that this course guide is correct at the time of going to print, changes may occur to the courses/fees we offer and/or the services and facilities available.

Any changes may result in a difference to the course fee as advertised on our website (where the student is a fee payer). In some cases where there are insufficient enrolments, you may be offered the chance to pay a higher fee for the course to continue.

Award and assessment fees are also subject to occasional changes by the Awarding Bodies. You will be contacted should the amount change prior to starting the courses you have enrolled on.

The college cannot guarantee that completion dates and result notifications for courses that require internal and external verification will always coincide with the end dates of the courses listed.

This publication can be made available in other formats or in languages other than English. Please contact our Advice & Guidance Team: (Tiverton) 01884 235245 or (North Devon) 01271 852422.

Please refer to petroc.ac.uk for up-to-date information.

your future starts here))



TIVERTON CAMPUS

Bolham Road
Tiverton
Devon
EX16 6SH
01884 235200

NORTH DEVON CAMPUS

Old Sticklepath Hill
Barnstaple
Devon
EX31 2BQ
01271 345291

petroc.ac.uk



YouTube



WORLD
LAND
TRUST™

www.carbonbalancedpaper.com
CBP008067