

PETROC

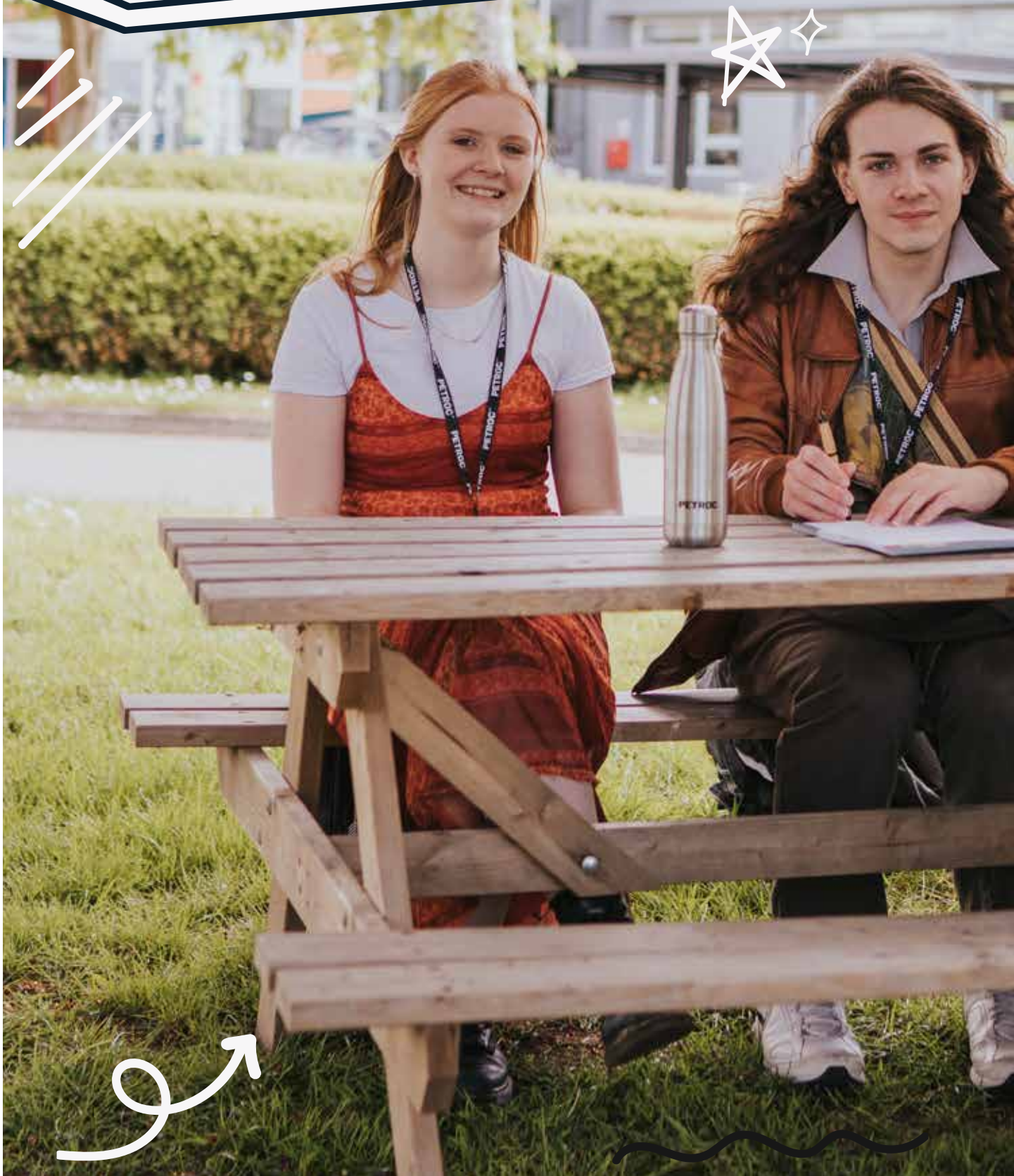
SCHOOL LEAVERS'
PROSPECTUS
2024/25

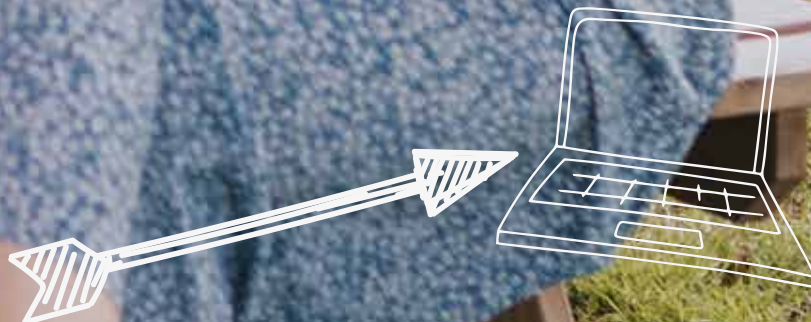


“و”

your future starts here

WANTED: Students who expect more...





Apply now for September 2024 start!

DISCOVER OUR COURSES

NORTH DEVON CAMPUS COURSES

A LEVELS		16
A LEVELS (CREATIVE INDUSTRIES)	18	A LEVELS (MATHS & SCIENCE) 26
A LEVELS (LANGUAGES & COMMUNICATION)	22	A LEVELS (SOCIAL SCIENCES) 32
VOCATIONAL PROGRAMMES		38
ANIMAL CARE	40	HAIR & BEAUTY 84
BUSINESS & MANAGEMENT	44	HEALTH & SOCIAL CARE 88
CONSTRUCTION	48	HOSPITALITY & CATERING 92
CREATIVE INDUSTRIES	56	MOTOR VEHICLE 96
DIGITAL & TECHNOLOGIES	62	PREPARING FOR ADULthood 100
EDUCATION & CHILDCARE	66	PUBLIC SERVICES & OUTDOOR ADVENTURE 104
ELECTRICAL & PLUMBING	72	SCIENCE 108
ENGINEERING & MANUFACTURING	76	SPORT 112
FOUNDATION LEARNING	80	

TIVERTON CAMPUS COURSES

VOCATIONAL PROGRAMMES		38
BUSINESS & MANAGEMENT	44	HEALTH & SOCIAL CARE 88
CONSTRUCTION	48	PREPARING FOR ADULthood 100
FOUNDATION LEARNING	80	



WELCOME TO PETROC

You're in control of your future; we can help you shape it.

On our vibrant, connected campuses you'll find the space and opportunities you need to take the first steps towards your dream career, right here in your community.

We know you can succeed with us at Petroc. We believe in creating learning experiences tailored to your personal success.

Whether you want to study A Levels, T Levels, learn an apprenticeship or take a vocational course, we can offer you outstanding education opportunities, excellent facilities, exceptional support and valuable connections with local employers. Students on our programmes get excellent results and everyone who puts in the effort required is given the opportunity to succeed, earning us a reputation for providing some of the best learning experiences in the South West.

We know that the greatest opportunities go to those with the highest level of learning, and so we will support and drive you to progress to the highest level, whether at our University Centre or with the best-known universities and employers across the country. Wherever you start, getting you to achieve at your highest level is our goal.

We also know the things you need to get ahead don't just come from courses. Your Petroc experience will be packed with opportunities for sport, travel, elite academies and rich experiences to ensure you have fun and make full use of all the time you have available at college – making you healthier, wealthier and better connected to give you an edge.

This is your guide to what to study at Petroc. I am confident you will have a great time, with the opportunities for you right here and the time to enjoy them. Find the things with us that spark your interest; look at our website and social media; speak to friends, family and career counsellors; and, get a taste of what your Petroc experience could be like. A well informed decision will be the key to your future success.

Come and talk to us. You will get a warm welcome, you will experience that at Petroc you are not a number, you are a member of a community - a community focused on helping you to achieve excellence through learning, wherever you want your life and career to go.

We look forward to welcoming you.



Dr Sean Mackney
Principal and CEO



WHY STUDY AT PETROC?

By choosing to study at Petroc, you'll be taking the next exciting steps that will lead you onwards to a valuable and interesting career.

Whatever qualification you choose to study, we will provide you with a supportive environment, excellent facilities, expert lecturers, opportunities for work experience and engagement with employers - all designed to enrich and build your skillset.

We'll also provide you with the opportunities to pursue personal interests, make life-long friends and expand your horizons.

The next few years have the potential to be some of the most important and memorable of your life. We're here to help you achieve excellence in your own learning and training so that you can fulfil your career and life ambitions.



OUTSTANDING RESULTS



Petroc students consistently achieve outstanding results.

In 2021/2022, students achieved 94% pass rate for vocational courses, and 98% pass rate for A Levels - with more than half gaining A* to B.

And, 87% of our Level 3 vocational, technical and A Level students who applied through UCAS, succeeded in progressing to their 'Firm Choice' of university.

When talking about 'our results' as a College, we are always keen to emphasise that these are our students' achievements, and we are incredibly proud of them. Whether they achieve high grades or overcome personal challenges to achieve their goals, we are in awe of their accomplishments. Here are just three of the students who won accolades for their personal journeys in our Petroc Student Awards 2023:

- Noah joined us to study A Levels after being home-schooled and is now heading off to study a degree in aeronautics and astronautics.
- Karina is a young adult carer and holds a part-time job as well as attending Petroc. She has her sights set on attending university after she completes her Level 3 media course.
- Aaron has progressed from a supported learning course to a construction course through his pure hard work and dedication, and has also shown his willingness to broaden his horizons by taking on enrichment programmes.





"My favourite thing about studying at Petroc is how you are treated like an adult and are given the tools to make your learning better. They have great facilities and staff for everything you may encounter through studying, and everyone is willing to help and be supportive - it's a really nice feeling." EDEN



SUPPORTIVE ENVIRONMENT

Your safety and wellbeing will always be our top priority. At Petroc, we have worked hard to establish a supportive, caring and inclusive environment where you can flourish.

You will be a valued member of our college community and we will work with you to find the right support to enhance your learning.

Whether you require additional guidance and assistance with your studies or help with your personal wellbeing, we have experts who can support you to be the person you want to be.

Find out more about the academic and personal support we offer on page 126.



ENRICHMENT

College life isn't just about gaining qualifications; it's also about enriching your life, expanding your skills, meeting new people and looking to the future.

Petroc offers a whole host of exciting opportunities across a huge range of activities for you to enjoy when you are not studying. These can help you develop your passions, try something brand new, be part of a team or give back to the community.

Find out more about our college life, academies and enrichment opportunities on page 116.

98%
pass rate
IN 2021/2022



FIND OUT MORE ONLINE
petroc.ac.uk

EXCEPTIONAL FACILITIES

We're proud of our outstanding facilities and our beautiful campus spaces.

We have commercial hair and beauty salons where you can be trained to deliver treatments in a professional environment. Our vehicle workshops feature the lifts and equipment you would find in a commercial garage and we have a series of well-equipped workshops for plumbing, electrical and carpentry courses. Our excellent science labs contain high quality equipment including a Cloud Chamber, and our unique Animal Centre houses an assortment of animals from goats to snakes!

This is just a snapshot of the facilities and spaces we offer. You can take a more detailed look through our virtual tours at petroc.ac.uk/campus-tours.



"I chose to come to Petroc as I always heard good things about it and everyone is so nice and friendly, and your class feels like family." **SHANNON**

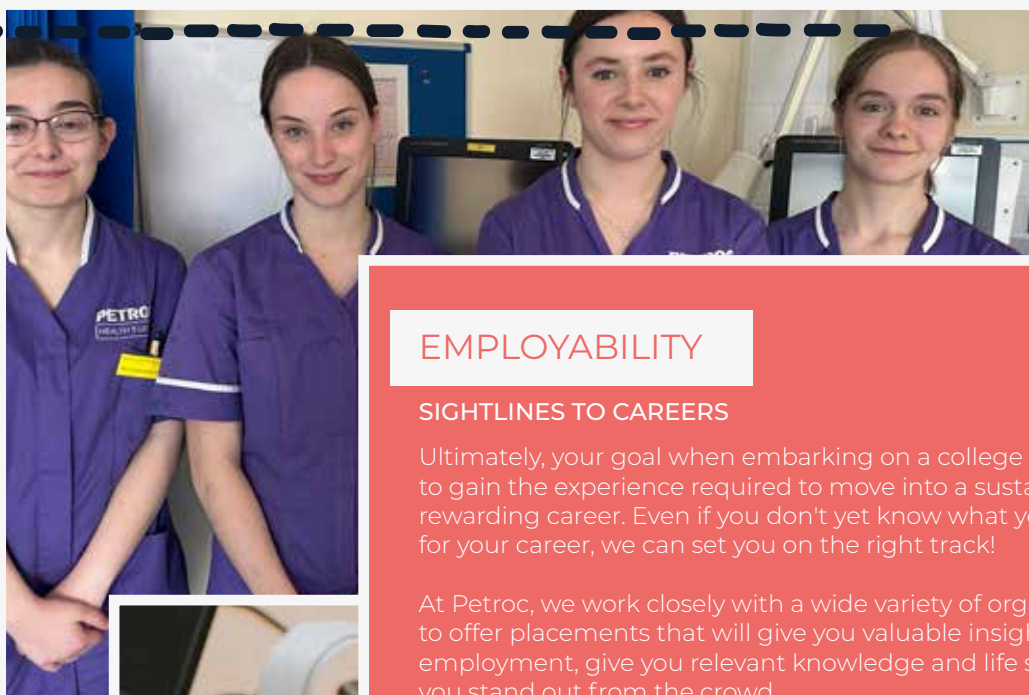


FACULTY & TEACHING STAFF

Our dedicated teaching staff are all subject specialists and many are industry-experienced professionals with a wealth of skills and knowledge to offer you.

They are all passionate about their subject and are committed to helping you develop the abilities and qualities needed for your future career.

They are here to share their unique knowledge, know-how and industry insights to inspire, challenge and support you to reach your individual learning goals.



EMPLOYABILITY

SIGHTLINES TO CAREERS

Ultimately, your goal when embarking on a college course will be to gain the experience required to move into a sustainable and rewarding career. Even if you don't yet know what you want to do for your career, we can set you on the right track!

At Petroc, we work closely with a wide variety of organisations to offer placements that will give you valuable insight into employment, give you relevant knowledge and life skills, and help you stand out from the crowd.

New perspectives gained during your placements will help you to put your classroom-based learning into practice, understand what it's really like to work in your chosen field and how to interact with colleagues and customers - whether that's in an office, workshop, laboratory or theatre.



DIGITAL EXPERTISE

At Petroc, we use a variety of learning platforms including Google Classroom, Moodle and Onefile and each course tailors their use of educational software to meet the specific needs of their students.

Using Google Workspace for Education, we have developed a digital curriculum that offers our students the chance to acquire the communication, collaboration, creativity and critical-thinking skills required for success in our rapidly-evolving digital world.

As a Petroc student, you will have an additional online curriculum created by our experts to allow you to learn in a variety of ways, including Extended Reality (AR, VR and MR), where it can complement face-to-face experiences.



FIND OUT MORE ONLINE
petroc.ac.uk

WHICH LEVEL IS RIGHT FOR YOU?

UNDERSTANDING QUALIFICATION LEVELS & ENTRY REQUIREMENTS

At Petroc, our dynamic and diverse course provision is central to delivering the skills you need for future success.

Recent national data compiled by the Government has shown that learners aged 16-19 who achieve a Level 3 qualification have the best possible chance to go on and succeed in their future career. This is why we have made it our mission to provide clear, logical and appropriate pathways - from Level 1 to Level 3 qualifications - so that you can plan your path to success.

Understanding what level, course or qualification is suitable for you can sometimes feel confusing, so we have created a quick-glance guide to the qualification levels available to you at Petroc and their related entry requirements.

We are passionate about delivering exceptional learning opportunities and enhancing the career aspirations of individuals. Our dedicated team can talk you through the options available to you at Petroc and you can find a detailed explanation of qualifications and levels at petroc.ac.uk/levels-explained.

Entry Level:

Entry Level courses give you access to Level 1 qualifications and employment. Qualifications include personalised outcomes to enable you to progress.

Entry requirements:

For all learners joining Entry Level Study Programmes, there are no formal entry requirements, however, you will have a one-to-one interview to discuss your personal learning needs. You will also be required to study English and Maths at an appropriate level to suit your ability.



Level 1:

Level 1 courses offer you the opportunity to acquire a broad range of knowledge and practical skills that are not taught in school which will allow you to enter a trade or profession, such as plumbing and construction.

Completing a Level 1 qualification will give you access to Level 2 opportunities, apprenticeships and employment. This includes vocational qualifications and Functional Skills.

Entry requirements:

You must hold **four GCSEs at Grade 2 or equivalent (or above)**, preferably including Maths and English. If you do not have a GCSE Grade 4 in Maths and/or English, you'll continue studying these subjects alongside your chosen course/s.

At the end of the year, you are expected to have completed and achieved all the components of your Level 1 Study Programme and improved your Maths and English skills (where applicable) before progressing on to your next course.

Level 2:

Level 2 qualifications will start to provide further focus on a subject that can support the transition to a Level 3 industry-relevant T Level, as well as other Level 3 qualifications, apprenticeships and employment.

Qualifications include GCSEs, vocational qualifications and apprenticeships.

Entry requirements:

All entrants must hold **four GCSEs at Grade 3 or equivalent (or above)**, preferably including GCSE Maths and English. If you do not have a GCSE Grade 4 in Maths and/or English you will continue studying these subjects alongside your chosen course/s.

At the end of the year, you are expected to have completed and achieved all the components of your Level 2 Study Programme and improved your Maths and English skills before progressing to your next level course.

Level 3:

Level 3 qualifications will set you on a path to university, higher apprenticeships or meaningful employment.

Qualifications include T Levels, A Levels, vocational qualifications, advanced apprenticeships, and Access to Higher Education Diplomas.

Entry requirements:

To be accepted onto a Level 3 programme, you must hold **at least five GCSEs at Grade 4 or above, including GCSE Maths and English Language.**

Certain subjects will require higher grade profiles - these are outlined in more detail on our website.

LEVELS 4-6 are university-level qualifications:

Level 4:

Foundation degree (Year 1), honours degree (Year 1), higher apprenticeship, degree apprenticeship, HNC, HND, professional qualifications.

Level 5:

Foundation degree (Year 2), honours degree (Year 2), higher apprenticeship, degree apprenticeship, professional qualifications.

Level 6:

Honours degree (Final Year), degree apprenticeship.

Petroc has been delivering a range of degree-level courses and qualifications for over 30 years. We provide a wide variety of degree-level programmes in subject areas ranging from education, computing, science, engineering, and health & social care.



The entry requirements detailed are a guide. During the application process, we will ask you about your predicted grades and these will be used to offer you the most appropriate level course. If you then achieve a higher or lower, grade we may adjust the level of your course accordingly to help you to attain your best result.

Some courses require specific or additional grades – please see the individual course details for more information. As always, further information and help can be found on our website or you can contact our dedicated Advice & Guidance Team.

GCSE GRADING

New Grading Structure

Old Grading Structure

9	A*	6	B	3	D	U	U
8		5		2	E		
7	A	4	C	1	F		
					G		

Standard Pass

YOUR STUDY PROGRAMME AT PETROC

A LEVELS, T LEVELS AND VOCATIONAL COURSES

In order to succeed in your chosen career, not only will you need to achieve the right qualifications, you should also be digitally-savvy, undertake meaningful opportunities with employers, develop a strong foundation of Maths and English and enhance your own personal and study skills to develop your character, skills, attitudes and confidence.

This is why every student on our A Level, T Level and vocational courses will have their own structured Study Programme that will support their development and maximise progression on to the next stage of their education, employment or apprenticeship.

YOUR CHOSEN QUALIFICATION/S



MATHS AND ENGLISH LANGUAGE DEVELOPMENT



WORK EXPERIENCE & INDUSTRY PLACEMENTS

PERSONAL DEVELOPMENT



POTENTIAL

DEVELOPMENT



SUPPORT

"I have taken part in the film club, which has enabled me to have a chill hour at lunchtime, and not just sit around waiting for my next lesson. I have also joined Just Dance, which is very fun and inclusive." HERMIONE

YOUR TIMETABLE

Below are some examples of timetables for A Level and vocational courses. These are just a guide but show the likely mix of lesson time, enrichment time and self-study time. You will also have plenty of opportunities for breaks when you can relax with friends in one of our many social spaces!

Example A Level timetable

Time	Monday	Tuesday	Wednesday	Thursday	Friday
09:00-10:00	Subject 1	Independent study	Subject 2	Subject 3	Subject 2
10:00-11:00	Independent study	Subject 1	Subject 2	Subject 2	Subject 3
11:00-12:00	Subject 2	Subject 1			Subject 3
12:00-13:00	Independent study	Tutorial		Independent study	Independent study
13:00-14:00	Lunch	Lunch	Lunch	Lunch	Lunch
14:00-15:00	Digital Learning	Subject 3	Enrichment / Academy	Subject 1	
15:00-16:00	Digital Learning	Subject 3	Enrichment / Academy	Subject 1	

"I like the schedule that Petroc provides as it gives plenty of time to do independent study between classes or go out for lunch in town. And when I finish college, I have time to do my part-time job or go to the beach with friends." EMILY

Example Vocational timetable

Time	Monday	Tuesday	Wednesday	Thursday	Friday
09:00-10:00	Independent study	Work placement	Lesson	Independent study	Lesson
10:00-11:00	Lesson	Work placement	Independent study	Digital learning	Lesson
11:00-12:00	Lesson	Work placement	Lesson	Lesson	Independent study
12:00-13:00	Lunch	Work placement	Lunch	Lunch	Lesson
13:00-14:00	Digital learning	Work placement	Lesson	Tutorial	Lunch
14:00-15:00	Lesson	Work placement	Enrichment / Academy	Lesson	Lesson
15:00-16:00	Independent study	Work placement	Enrichment / Academy	Independent study	Independent study

QUALIFICATION OPTIONS

discover
more!



There are a number of different qualifications available to you at Petroc and we're here to help you choose the route that is most suitable for your needs and aspirations.

If you need some support or guidance in choosing the right course or subject/s, our experienced Advice & Guidance Team are on hand to offer independent help and assistance.

Our Future Choices online support tool will also provide you with useful information about education and career options. Take a look at petroc.ac.uk/careers.

A Levels

A Levels are a Level 3 programme and are suitable if you enjoy a more academic style of learning. They are excellent preparation if you are considering going on to university because they require a similar type of learning approach and elements of independent study.

A Levels are qualifications that are recognised and accepted worldwide. They allow you to choose and focus on specific subjects that you are passionate about and are an opportunity to explore topics that may not have been available to you at GCSE level.

There are many subjects that you can choose to study at A Level and, alongside your classroom-based learning, you will be encouraged to get involved in one of our Academies to help further develop your knowledge and understanding.

Furthermore, our expert team will work with you to ensure your A Level choices support your chosen career or academic pathway. At Petroc, you can take up to three A Levels at one time.

They usually take two years to complete and the majority are assessed by examinations with some subjects having a coursework/assignment component.



If you don't achieve the GCSE grades required for A Levels, don't worry! Our Step Up to A Levels (SUTA) programme will help prepare you for Level 3 study. Find out more on page 17.

Vocational

Vocational programmes are available at Levels 1, 2 or 3 and combine practical learning with classroom-based teaching. Each level will give you a logical and smooth pathway to the next qualification available to you.

Level 1 and 2 courses last for one year and you can usually progress onto a higher level upon completion.

Level 3 vocational courses usually run for two years and are equivalent to three A Levels. They include T Levels and BTEC qualifications.

Throughout your studies, you will be expected to carry out work experience or industrial placements depending on your chosen area of study. You will be required to undertake a series of exams and assessments.

Generally, Level 1 courses offer a broad introduction to a subject area, Level 2 courses are more focussed, and Level 3 courses provide greater knowledge in specific subject areas. We encourage all our learners to aim for achieving a Level 3 course as a minimum, as most businesses will request Level 3 qualifications when looking for new employees.

Depending on the level completed and your career ambitions, you could progress on to university, an apprenticeship, employment or a higher level vocational course.

Discover more about T Levels and apprenticeships:



T-LEVELS

T LEVELS are a new two-year technical qualification, introduced by the Government in 2020.

They are suitable for Level 3 learners who want a more practical, employer-led study programme and are equivalent to three A Levels.

They offer an innovative and valuable blend of classroom learning and work experience with an industry placement of at least 315 hours (the equivalent of 45 days).

You will spend approximately 80% of your time on college-based learning and 20% of your time in work placement.

T Level courses have been developed in collaboration with employers and businesses, giving you the most relevant and up-to-date skill set for a successful career. They are designed to offer you excellent workplace-based experience to meet contemporary business needs across a wide spectrum of industries.

T Levels are an ideal course if you want to gain the knowledge and experience to go straight into employment, an apprenticeship or on to university.



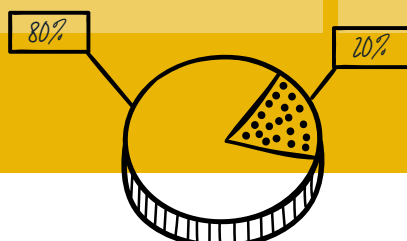
Apprenticeships

An **APPRENTICESHIP** is real workplace-based employment combined with an accompanying skills and knowledge development programme.

They are an excellent way to earn while you learn because you will receive a salary whilst also studying at college to obtain the qualifications relevant to your chosen role. The normal division of your time will be 80% work placement with 20% college-based learning.

An apprenticeship will offer you the perfect combination of learning and hands-on industry experience where you will rapidly acquire the knowledge base for your chosen career and an understanding of real-world workplace behaviours and requirements.

On completion of your apprenticeship, you will have the opportunity to move on to a higher level apprenticeship or into permanent employment. At Petroc, apprenticeships are available from Level 2 all the way up to degree level.



A LEVEL COURSES



98%
pass rate
IN 2021/2022



discover
more!

FIND OUT MORE ONLINE
petroc.ac.uk



WHAT ARE A LEVELS?

A Levels are an excellent choice if you enjoyed a particular subject at GCSE, want to continue to explore it in more detail or plan to study it at university. They offer you access to a broad range of career and higher education options and are an excellent stepping stone if you are undecided about your career pathway.

A Levels are a more academically inclined style of learning than a practical or vocational course. They involve an element of independent study and will help you develop the skills and study habits needed to excel at university.

You'll gain attributes recognised and valued by employers and your academic studies will be complemented with opportunities to enrich and broaden your subject learning. These can include mentoring, field trips for research, or even travel overseas. You will also have the opportunity to join our Petroc Academies which will offer even greater opportunities to develop an understanding of your chosen subjects and will help you to prepare for university and work. Find out more about our Academies on page 117.

CHOOSING YOUR SUBJECTS

Most A Level students identify three subjects that they are interested in studying. Alternatively, you may wish to combine two A Levels with one BTEC option e.g. A Levels in Sociology and Biology and a BTEC in Health and Social Care.

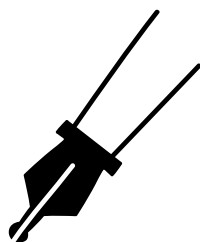
Some universities can be very specific about the A Level combinations required for entry onto certain courses so it's a good idea to check what combination is right for you and the next steps you plan to take. If you need help with selecting the best combination of A Levels, our Advice & Guidance team will be happy to help!

These are the most important aspects to consider when choosing A Levels subjects:

1. Think about what you are likely to enjoy and be good at. Is there a subject you have a particular passion for? If you enjoy a subject or have an ability in it already, you are more likely to do well.
2. Are there any particular subjects and/or grades you know you need to move forward with your career plans?
3. How open and flexible do you want to keep your future study and career choices? Petroc courses offer you the opportunity to explore new subjects and keep your options open.



788,125 students studied
A Levels in the UK in 2022¹



Please note: Our A Levels are only available at North Devon campus.

STEP UP TO A LEVELS (SUTA)

Level 2 | Duration: 1 year

North Devon | FTB632

This course is designed for students who haven't achieved the grades required for their A Level programme.

During the course, we will help you to achieve grade 4 or above in a suite of GCSE courses so that you can progress onto your chosen A Level programme.

You will study up to 5 GCSEs which follow a combined humanities and science pathway: English, Maths, Sociology, Citizenship and Combined Science. You will also undertake Progression Studies where you will complete work at A Level standard in preparation for progression onto your chosen A Level programme.

ENTRY REQUIREMENTS

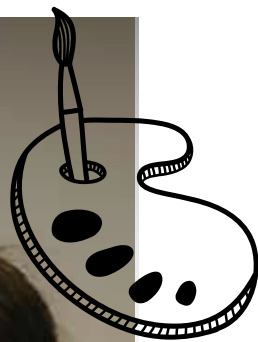
You will need to have achieved at least 3 GCSEs at grade 3 or above, with the reasonable chance of gaining a grade 4 once you have completed the programme. If you have not previously studied GCSEs, you will be required to undertake English and Maths assessments as part of the interview process.

PROGRESSION

Upon successful completion of the programme, and with good attendance, you will be able to progress onto A Levels.

¹ gov.uk

CREATIVE INDUSTRIES



FIND OUT MORE ONLINE
petroc.ac.uk





"There's a lot more independence, especially in comparison to a sixth form. I've been given the freedom to study the things I'm interested in by teachers who are clearly interested in the subjects they teach."

JINX, A LEVELS (FORMER HOME SCHOOLED STUDENT)



WHAT CAN I EXPECT?

The creative industries employ over two million people in the UK alone and offer an unparalleled opportunity to collaborate with a huge variety of professional disciplines in everything from advertising and filmmaking to dance and theatre.

By choosing to study an art, craft and design course, you will open a door into this exciting, imaginative and rapidly evolving industry.

Whatever your interests, working in the creative sector offers an incredible and inspiring variety of career options that could take you around the globe.

You will develop your talent and imagination, as well as your confidence. You'll lead projects, explore innovative new tech and find ways to communicate your ideas and stories.

Your studies will allow you to try many different aspects of creative work to find what suits you best. You will be offered the chance to gain a broad understanding of a range of topics which provide greater insight into the many career pathways available. You can then use this knowledge base to go on to university and study a particular area in greater depth or step straight into employment.



The market size of the Graphic Design Activities industry increased **3.5%** in 2022 ¹



The average annual salary for a Graphic Artist is **£35,643** ²

¹ IBIS World

² Payscale



Future Careers...

Working in the creative sector offers an incredible variety of career options:

- Graphic Designer
- Interior Design
- Architecture
- Jewellery Designer
- Fashion Designer
- Illustrator



ART, CRAFT & DESIGN A LEVEL

Level 3 | Duration: 2 years

📍 North Devon | FTB003

This A Level will develop your independence and enthusiasm. You will work across a broad variety of practical areas in both 2D and 3D, and explore both design and expressive disciplines.

The course will be made up of the following components:

- Research into a variety of artists, movements and disciplines
- Experiment with a broad range of art techniques and processes
- Develop a personal outcome that links with key themes and personal ambitions
- Produce a written document that encapsulates the fascinations within the individual project
- Present and display an outcome that has meaning and personal significance

You will also undertake an externally set assignment.

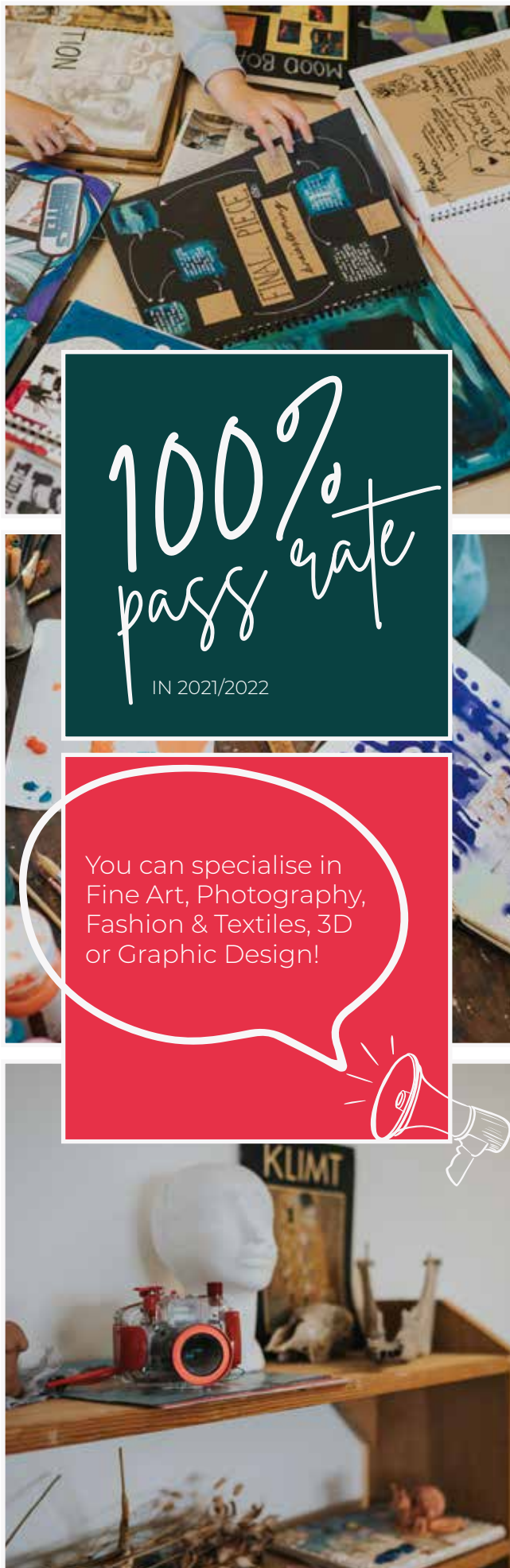
Each year there are opportunities to take part in visits to galleries and exhibitions.

ENTRY REQUIREMENTS

You must hold at least five GCSEs at grade 4 or above, including Maths, English Language and a creative subject.

PROGRESSION

Successful completion of this course can lead to a range of careers from architecture or interior design, to fashion forecaster or illustrator. Alternatively, you may decide to progress onto a specialist degree course at Petroc or elsewhere.



FIND OUT MORE ONLINE
petroc.ac.uk



LANGUAGES & COMMUNICATION



FIND OUT MORE ONLINE
petroc.ac.uk



"Studying at Petroc was a real turning point in my life. I have my amazing teachers to thank for encouraging me to believe in myself and achieve the best grades that I could."

KATHARINE, A LEVELS (FORMER TIVERTON HIGH SCHOOL STUDENT)



WHAT CAN I EXPECT?

From the earliest stories told around a fireside to the newest ones shared on social media, language, communication and storytelling are the foremost unifying currency of human experience.

Exploring everything from the spoken voice to the written word, Petroc qualifications in Languages and Communication offer you an inspiring and immersive learning experience and a vast wealth of future study and employment opportunities.

Whether you're passionate about reading, dream of being a writer or poet, are interested in exploring the evolution of the English language or are fascinated by foreign languages and cultures, these subjects will offer you everything you want and more.

English Literature and Language A Levels will help you to develop your critical understanding of set texts, hone your analytical skills and expand your ability to build and communicate logical, reasoned arguments.



UK is the largest single-country market for language services in Europe ¹

¹ Association of Translation Companies



The average annual salary for a Speech and Language Therapist is **£36,540** ²

² Talent.com



Future Careers...

Communications subjects offer a wealth of employment opportunities:

- Translator
- EFL Teacher
- Journalist
- Secondary School Teacher
- Foreign Correspondent
- International Sales Manager



ENGLISH LANGUAGE A LEVEL

Level 3 | Duration: 2 years

📍 North Devon | FTB012

In English Language A Level, you will get to explore and appreciate the rich tapestry of our native tongue, both its past, its present and its future; learning how to analyse and comment and to create texts of your own to match an audience. You will also consider varieties and linguistic diversity found within the language.

You will investigate and evaluate English, looking at wide-ranging topics like gender, accent, child language acquisition and language change. You will consider how factors like society, work and prejudice can all play a part to shape our language.

You will also hone your analytical writing skills and try your hand at original articles; undertake your own language investigation, analysing your chosen topic in detail; and create an original piece of writing.

The course will often raise opposing viewpoints which will create a platform for debate with fellow students and lecturers.

ENTRY REQUIREMENTS

You must hold at least five GCSEs at grade 4 or above, including Maths. You must have grade 5 in English Language.

PROGRESSION

Upon successful completion of this course, you may wish to move onto a higher level study of linguistics, speech therapy, law or English Language. An A Level in English Language is invaluable if you are considering teaching, the media or journalism, and it gives you excellent transferable skills.

ENGLISH LITERATURE A LEVEL

Level 3 | Duration: 2 years

📍 North Devon | FTB013

If you're an avid reader and a lover of literature, this highly regarded study programme is a natural choice for you. You'll read and examine a real variety of writing from different periods and genres, building on the analytical skills you've acquired at GCSE.

The course texts can vary but currently include such great titles as 'The Great Gatsby' by F. Scott Fitzgerald, Shakespeare's 'Othello' and a collection of poetry. You will also learn how to analyse unseen texts and how to apply your skills in comparison of a wide variety of texts.

You will then be encouraged to follow your own interests through the comparison of two texts and go on to study a further range of texts such as 'The Handmaid's Tale' by Margaret Atwood, 'A Streetcar Named Desire' by Tennessee Williams and another collection of poetry.

ENTRY REQUIREMENTS

You must hold at least five GCSEs at grade 4 or above, including Maths and English Language. You must have grade 5 in English Literature.

PROGRESSION

This is a subject which is highly regarded everywhere. You may wish to progress to university to an English Literature degree or another humanities subject. Alternatively, you may decide to seek a career in the media, publishing, marketing or teaching.

FRENCH A LEVEL

Level 3 | Duration: 2 years

📍 North Devon | FTB015

In a globalised world, language skills are in demand. French is one of the main languages used by the UN and the European Union, but it is also the language of romance and great literature, like 'Les Misérables' and 'The Hunchback of Notre Dame'.

This course will centre upon the key areas of speaking, listening, reading, writing and translation. You will explore changes in French society and culture including work, education, music and traditions to help refine your French communication skills. You will also read a famous French text and watch French-directed films such as 'Les Choristes' and 'Chocolat'.

You will also cover thought-provoking topics like the positive impact of immigration and the effect of occupation in World War II.

The course is varied, lively and enjoyable. There are opportunities for debates and discussions on topical issues which are in the news and you will enhance your existing knowledge of both the language and the countries where French is spoken.

ENTRY REQUIREMENTS

You must hold at least five GCSEs at grade 4 or above, including Maths and English Language, and a grade 5 in French.

PROGRESSION

An A Level in French can open up the world to you and enhance your other subjects, making you a more unique candidate for prospective employers. Or, you may decide to continue studying French at degree level, or combine it with another subject.

SPANISH A LEVEL

Level 3 | Duration: 2 years

📍 North Devon | FTB038

Some 400 million people around the world speak Spanish, so it goes without saying that it is a worthwhile language to study at A Level.

People who can speak a foreign language are more marketable and have more career choices, and as Spanish is one of today's global languages, it is the perfect choice.

You will learn to communicate in advanced Spanish by studying a variety of exciting topics and current affairs, as well as exploring interesting issues that affect life in the 21st century.

You will study four core units:

- Evolution of the Spanish society
- Culture in the Spanish-speaking world
- Immigration and multicultural society
- Franco's dictatorship and the transition to democracy

You will study the film 'Volver' and a novel by Gabriel Garcia Marquez. You will also have the opportunity to explore topics of personal interest.

ENTRY REQUIREMENTS

You must hold at least five GCSEs at grade 4 or above, including Maths and English Language, and a grade 5 in Spanish.

PROGRESSION

You can use your Spanish A Level to find employment in a wide range of areas from banking to charity work. Alternatively, you could continue to university and study a combined degree in Spanish and your chosen subject.



MATHS & SCIENCE

$$\pi \approx 3.141$$



FIND OUT MORE ONLINE
petroc.ac.uk

100%

OF ENVIRONMENTAL
STUDIES STUDENTS
GAINED GRADE A*-C
IN 2021/22



"I have most enjoyed furthering my knowledge, which has allowed me to get closer to what I want to achieve in life."

OWEN, A LEVELS (FORMER PILTON COMMUNITY COLLEGE STUDENT)



WHAT CAN I EXPECT?

With the potential to unlock the mysteries of the universe, this curriculum area focuses on the high-performing STEM-related subjects of Science, Technology, Engineering and Mathematics.

Offering the most diverse selection of potential career trajectories, STEM subjects can take you around the world and into almost any industry.

Your study experience in any of these subject areas will help you develop your skills of analysis, problem-solving, creativity, critical thinking and collaboration; all core abilities valued by top universities and employers within the STEM sector.

In addition, you will have the chance to join one of our Academies. These super-curricular programmes will develop your personal interests and passions for STEM subjects and enhance your higher education and employment opportunities.

We have excellent laboratory facilities on campus which allow access to subject specific resources such as fume cabinets, chemistry Quickfit kits, a large collection of monocular and binocular microscopes as well as a full range of dissection kits and an innovative Cloud Chamber.

Petroc is proud to be the only STEM-assured college in Devon. This means that we offer a curriculum that is enriched by input from local employers, enabling you to find clear career pathways into a wide range of engineering and science-based jobs.



In 2021, an IET report revealed that the STEM sector had a shortfall of **173,000** workers ¹



The average salary for an Accountant is **£42,500** ²

¹ Institution of Engineering and Technology ² Totaljobs.com



Future Careers...

Providing pathways into a wide range of engineering and science-based jobs:

- Mathematician
- Data Analyst
- Scientific Laboratory Technician
- Secondary School Teacher
- Scientist
- Accountant
- Engineer



BIOLOGY A LEVEL

Level 3 | Duration: 2 years

📍 North Devon | **FTB004**

This challenging and stimulating programme develops your understanding of Biology through the study of a wide range of topics which you will learn through a range of practical investigations.

You will study the following modules:

- Development of practical skills, such as planning, implementing, analysis and evaluation
- Foundations in biology
- Exchange and transport
- Biodiversity, evolution and disease
- Communication, homeostasis and energy
- Genetics, evolution and cosystems

ENTRY REQUIREMENTS

You must hold at least five GCSEs at grade 4 or above, including Maths and English Language. You must also have a grade 6 in Biology or grade 6 in both Core Science and Additional Science.

PROGRESSION

Biology A Level is highly regarded by universities and employers. You may decide to go on to university to study for a career in medicine, ecology, microbiology, conservation, or physiotherapy. You could also progress to Petroc's Foundation Degree in Human Biosciences.

CHEMISTRY A LEVEL

Level 3 | Duration: 2 years

📍 North Devon | **FTB005**

This stimulating, practical A Level Chemistry programme builds on topics you will have covered at GCSE, and then takes you into new territories such as spectroscopy and the transition metals.

You will study the following topics:

- Atomic structure and bonding
- The periodic table
- Rates of reaction
- Aromatic compounds and amines
- Identifying mechanisms for chemical reactions
- Learning how to conduct characteristic tests for carbonyl compounds

There will be more application of mathematical formulae in the second year, such as using logarithmic functions to determine pH, and use of spectroscopy in analysis of compounds.

ENTRY REQUIREMENTS

You must hold at least five GCSEs at grade 4 or above, including Maths and English Language. You must also have a grade 6 in Chemistry or a grade 6 in both Core Science and Additional Science.

PROGRESSION

A Level Chemistry is highly regarded and leads into a wide range of science-based degree courses from medicine to biochemistry and chemical engineering. It is also extremely useful if you wish to study other sciences, especially biology and physics.

COMPUTER SCIENCE A LEVEL

Level 3 | Duration: 2 years

📍 North Devon | **FTB264**

Advances in computing are transforming the way the world works. Computer Science A Level will teach you the principles and concepts of computer science and you will be encouraged to think creatively, innovatively, analytically, logically and critically.

You will study the following modules:

- Fundamentals of programming
- Fundamentals of data structures
- Systematic approach to problem-solving
- Fundamentals of data representation
- Fundamentals of computer organisation and architecture
- Fundamentals of communication and networking
- Fundamentals of algorithms
- Fundamentals of databases
- Big Data
- Fundamentals of functional programming

This will all include the language of programming, bits and bytes, binary, bitmap imaging, the digital representation of sound, hardware and software and Boolean algebra processing.

ENTRY REQUIREMENTS

You must hold at least five GCSEs including English Language at grade 5 and Maths at grade 6.

PROGRESSION

On successful completion of this course, you may wish to progress to university to study a degree in computer science in order to follow a career such as a business analyst, database administrator, games developer, IT consultant, programmer, SEO specialist, web designer or big data consultant.

ENVIRONMENTAL SCIENCE A LEVEL

Level 3 | Duration: 2 years

📍 North Devon | FTB014

Environmental Science is a highly relevant and topical course which combines geography with biology to understand how humans interact with their environment, and the consequences and solutions of these actions.

You will study the following modules:

- The living and the physical environment
- Atmospheric pollution, water resources and supplying the world with building materials and metals
- The global effects of energy supply
- Farming, fishing and forestry

The course is supported by fieldwork, laboratory work and excursions which will enhance your understanding of research methods and conservation.

ENTRY REQUIREMENTS

You must hold at least five GCSEs at grade 4 or above, including English Language. You must achieve a grade 5 in Maths and two sciences.

PROGRESSION

On successful completion of this course, you may wish to progress to university to study subjects such as environmental science, geology, marine biology or conservation.

HEALTH & SOCIAL CARE BTEC (A LEVEL EQUIVALENT)

Level 3 | Duration: 2 years

📍 North Devon | FTB020

This course is designed for students who wish to study Health & Social Care alongside other A Level subjects.

The programme will offer you the skills, knowledge and experience needed to successfully progress on to university or employment in the social care, social work or healthcare sectors.

You will cover four key topics:

- Human lifespan development: The biological, psychological and sociological theories associated with human lifespan development.
- Meeting individual care and support needs: The values and skills required for a career in social care or health care.
- Working in health and social care: The roles and responsibilities of health and social care practitioners and the organisations they work for.
- Psychological perspectives: How to apply them in a work setting.

This course is equivalent to (and generates the same UCAS points as) one full A Level.

ENTRY REQUIREMENTS

You must hold at least five GCSEs at grade 4 or above, including Maths and English Language.

PROGRESSION

On successful completion of this course, you may wish to study for a degree in nursing, social work, midwifery, psychology or education.

MATHEMATICS A LEVEL

Level 3 | Duration: 2 years

📍 North Devon | FTB026

A Level Mathematics builds on your existing mathematical skills gained at GCSE. You will study Pure Mathematics, using both computer software and scientific calculators to aid learning when appropriate.

To broaden your experience, you will also study some applied mathematics.

You will study the following subjects:

- Pure Mathematics including algebra, geometry, sequences and series, calculus, exponentials, logarithms and trigonometry.
- Statistics will involve dealing with a large set of data, making use of both scientific calculators and mathematical software.
- Mechanics including Newton's laws of motion, dynamics and statics

The skills gained in your first year will be used and built upon in your second year, by extending the depth of the topics studied.

ENTRY REQUIREMENTS

You must hold at least five GCSEs at grade 4 or above including a grade 6 in Maths and a grade 5 in English Language.

PROGRESSION

Mathematics is a prized qualification for university. It highlights your natural problem-solving ability and logical ordered thinking. You may decide to progress onto a degree course in a mathematics discipline, physics or engineering, or progress straight into the workplace.

FURTHER MATHEMATICS A LEVEL

Level 3 | Duration: 2 years

📍 North Devon | FTB027

If you have a genuine love of, and a real aptitude for mathematics, this Further Mathematics study programme will take you deeper into this hugely rewarding subject and allow you to really explore your abilities.

You will study A Level Maths in your first year and A Level Further Maths in your second year.

During the course you will study a compulsory unit on pure mathematics, which covers a range of topics including series, complex numbers and matrix algebra which are not encountered when studying A Level Mathematics. There will also be units covering statistics, hyperbolic trigonometric functions, simple harmonic motion, circular motion and oblique impacts.

This qualification is also offered as a Petroc Plus enrichment opportunity so can be studied as a 4th A Level.

ENTRY REQUIREMENTS

You must hold at least five GCSEs at grade 4 or above, including English Language, and a grade 7-9 in Maths.

PROGRESSION

A Level Further Mathematics is an excellent stepping stone towards any maths related degree course including physics or engineering.

PHYSICS A LEVEL

Level 3 | Duration: 2 years

📍 North Devon | FTB035

Physics has been gaining in popularity in recent years, and physicists are highly valued in a broad range of careers.

This Physics A Level study programme is made up of theoretical units, building on and extending the physics knowledge gained from GCSE, and introducing new subject areas.

You will study the following topics:

- Basic laws of the universe
- Understanding motion, forces, work and energy
- The behaviour of materials
- Electricity
- Quantum mechanics
- Newton's laws
- Electric and magnetic fields
- Circular and simple harmonic motion
- Atoms and nucleus
- The physics of medicine

You are required to take Mathematics A Level alongside Physics A Level.

ENTRY REQUIREMENTS

You must hold at least five GCSEs at grade 4 or above, including English Language. You will need a grade 6 in Maths and a grade 6 in Physics or grade 6 in both Core Science and Additional Science.

PROGRESSION

If you are considering going to university, Physics A Level can lead onto a range of degrees including engineering, biophysics, sustainable energy research, economics and veterinary science.

SPORT BTEC (A LEVEL EQUIVALENT)

Level 3 | Duration: 2 years

📍 North Devon | FTB197

This course is designed for students who wish to study a Sport and Physical Education topic alongside other A Level subjects.

You will cover four key topics:

- Anatomy and physiology in Sport: The structure and function of the five different body systems that allow us to perform as athletes.
- Practical sports performance: Perform, analyse and review sporting performance.
- Fitness training and programming for health, sport and wellbeing: Develop an individual's health, fitness and wellbeing.
- Professional development in the sports industry: Investigate the sports industry, employment opportunities and career pathways on offer.

This course is equivalent to (and generates the same UCAS points as) one full A Level.

ENTRY REQUIREMENTS

You must hold at least five GCSEs including English Language and Math..

PROGRESSION

Upon successful completion of this course you will be able to study a sport-related degree level course such as sports coaching, sport science, sport marketing, sports massage or a teacher qualification. You may wish to undertake our Foundation Degree in Sport; Coaching, Health and Fitness at Petroc.

CORE MATHS

Level 3 | Duration: 1 years

📍 North Devon | FTB632

This one-year Certificate in Core Maths will enable you to develop the mathematical, quantitative and statistical skills learned at GCSE. It will support your other A Level subjects and leave you better prepared for employment and further study.

It's an ideal option if you have passed GCSE Mathematics at grade 4 or above, but have decided not to continue it at A Level.

During the course, you will study:

- Introduction to quantitative reasoning
- Critical maths

This course is designed to be studied alongside three A Levels.

ENTRY REQUIREMENTS

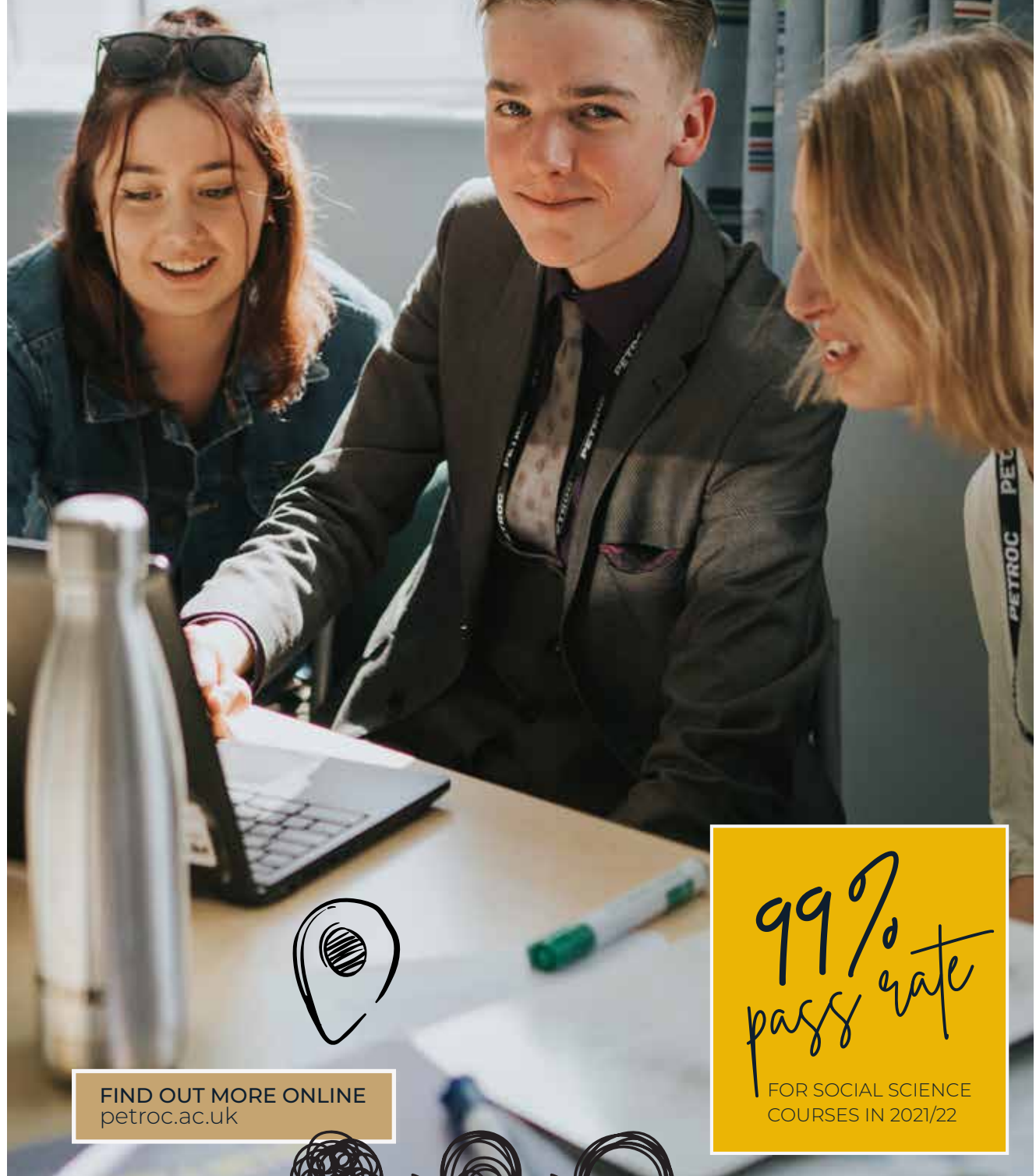
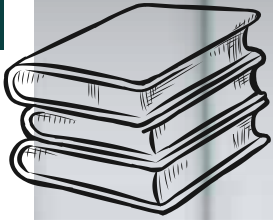
You must hold at least five GCSEs at grade 4 or above, including Maths and English Language.

PROGRESSION

Core Maths has the same UCAS tariff points as an AS Level qualification and will aid university applications.



SOCIAL SCIENCES



FIND OUT MORE ONLINE
petroc.ac.uk

99%
pass rate

FOR SOCIAL SCIENCE
COURSES IN 2021/22





"I like my psychology teachers and enjoy the freedom I have, for example how I can go home in my breaks."

TOM, A LEVELS (FORMER PILTON COMMUNITY COLLEGE STUDENT)



WHAT CAN I EXPECT?

For all future business leaders, historians and museum curators, detectives, researchers, law-makers and environmental game-changers.

Social Sciences covers a wide and fascinating range of subjects from business, economics and geography to politics, sociology, psychology and classical civilisation.

Any of these subjects at A Level will provide you with a strong foundation of academic achievement on which to build further investigation and exploration. All involve exciting elements of independent study, research and discussion and allow you to immerse yourself in topics you feel passionate about.

These are the subjects that could really help you make a positive impact on the world around you.

A Social Science course at Petroc invites you to understand the complex and rapidly changing systems and interactions within human society.

Topics that feature within this curriculum area include how governments are formed and laws are made, how societies create and evolve economic systems, how history informs the present and how individuals and groups make decisions.

Within these subjects, you will find a deeper understanding of the way the world has developed to date and how you can make a positive impact on its future.

You will learn to analyse, critically evaluate and debate topics and ideas and will develop your own values and beliefs based on your learning.

Social Sciences offer you a myriad of higher education and employment choices and can lead to a wide variety of careers and globetrotting roles.

While studying at Petroc, you will also have the chance to join one of our Academies and use the super-curricular opportunities to make a difference to the world today.



Psychology, sociology, business studies and economics are ranked in the **TOP 10** most studied subjects at A Level¹



The average salary for a Psychologist is **£47,998**²

¹ Academy of Social Sciences ² Talent.com



Future Careers...

Make a positive impact on the world around you in a wide variety of careers:

- Solicitor
- Civil Servant
- Human Resources Officer
- International Aid Worker
- Local Government
- Paralegal



BUSINESS A LEVEL

Level 3 | Duration: 2 years

📍 North Devon | **FTB341**

When you study Business A Level, you will learn to demonstrate the inter-related nature of business using business models, theories and techniques to support analysis of contemporary business issues and situations.

You will develop your understanding of how businesses operate, how to analyse data, the decision-making process, competition and changing technology.

You will study the following modules:

- What is business?
- Decision-making to improve financial performance
- Choosing strategic direction
- Managing strategic change

You will use non-quantitative and quantitative data including the interpretation of index numbers and calculations such as ratios and percentages.

ENTRY REQUIREMENTS

You must hold at least five GCSEs at grade 4 or above, including Maths, and English Language at grade 5.

PROGRESSION

Successful completion of this course can lead to a range of career choices such as management, marketing, finance, retailing, manufacturing, project management and local government. It's also a great route for studying courses such as economics or business studies at degree level.

CLASSICAL CIVILISATION A LEVEL

Level 3 | Duration: 2 years

📍 North Devon | **FTB007**

In this Classical Civilisation A Level course, you will look at some truly fascinating periods in history.

You will study the world of the Ancient Greeks, and in particular 'The Odyssey', by the poet Homer, in which the culture and religion of the Greeks is interwoven with the characters and monsters he meets.

You will also study Ancient Rome, specifically the politics of the Roman Republic and the political ideas of that time. You will get to know leaders such as Julius Caesar, Marcus Cicero and Marcus Cato and the tumultuous events that led to the collapse of the Roman political system in the last century BC. You will examine Rome's first 'Emperor', Augustus, and the way in which he created an image that ensured his uninterrupted rule of Rome and its Empire for over 40 years. You will also look at art, architecture, coins and poetry to see how he was able to communicate specific messages of power and authority to those he ruled over.

ENTRY REQUIREMENTS

You must hold at least five GCSEs at grade 4 or above, including Maths, and English Language at grade 5.

PROGRESSION

The knowledge and skills learned on Classical Civilisation A Level can lead you on to study a wide range of subjects at university as well as careers such as teaching, publishing, curating and politics.

ECONOMICS A LEVEL

Level 3 | Duration: 2 years

📍 North Devon | **FTB010**

Economics is a vibrant, exciting and relevant subject. It affects every aspect of our lives, from the decisions we make as individuals to the structures created by governments and firms. It relates economic theories to challenges such as globalisation and its effects on the UK in terms of jobs and migration, and issues facing individual businesses such as marketing and management.

During the course, you will be introduced to the nature of economics, how markets work and why they fail, consumer choices and enterprise in the economy. You will also consider the role of banks and life in a global economy.

You will also explore the impact of globalisation on consumers, firms and the labour market, and investigate the role of the government and the financial sector.

ENTRY REQUIREMENTS

You must hold at least five GCSEs at grade 4 or above. This must include a grade 5 or above in Maths and English Language.

PROGRESSION

Studying economics will help you develop transferable skills that will prepare you for studying at university or moving into the world of work. You may decide to study for a degree in environmental economics, business economics, international business or finance. These may lead onto careers in sales, banking, product management or general management.

GEOGRAPHY A LEVEL

Level 3 | Duration: 2 years

📍 North Devon | FTB016

This is a broad Geography course that will help you make sense of what is happening in the world today. It will inspire and develop your geographical understanding to help you engage with real-world issues and places.

You will study the following units:

- Tectonic processes and hazards
- Coastal landscapes and change
- Globalisation
- Diverse places
- The water cycle and water insecurity
- The carbon cycle and energy security
- Superpowers
- Migration, identity and sovereignty

You will undertake a minimum of two days of fieldwork each year, across human and physical geography topics.

ENTRY REQUIREMENTS

You must hold at least five GCSEs at grade 4 or above. This must include a grade 5 or above in Maths and English Language. You should ideally have a grade 4 in GCSE Geography.

PROGRESSION

Geography is an excellent subject for many degree courses in both the sciences and humanities as it provides many opportunities for you to develop your skills and problem-solving ability. You may decide to specialise in a particular aspect of the subject such as international relations, human geography, physical geography or earth sciences.

HISTORY A LEVEL

Level 3 | Duration: 2 years

📍 North Devon | FTB021

History is a fantastic choice if you are interested in the values, events and ideas that underpin our world today.

You will study two core areas - one in breadth and one in depth.

The depth study concerns British history and focuses on the War of The Roses and Henry VII. This is an exciting period of history as proven by its inspiration of Game of Thrones as well as prominent authors such as Phillipa Gregory and Conn Iggulden.

The breadth study will look at the history of Germany between 1871 and 1991. From Bismarck to Weimar through Hitler and the Cold War to the fall of the wall; this module goes far beyond the traditional scope of obsessing Nazi Germany that dominates many other history curricula.

In addition, Soviet Russia will be the inspiration for coursework-based historical investigation and you will also be given the opportunity to focus on an area of personal interest.

ENTRY REQUIREMENTS

You must hold at least five GCSEs at grade 4 or above, including Maths, and a grade 5 in English Language.

PROGRESSION

On completion of your course, you may wish to undertake a degree course in history or a joint degree with another subject. History can lead to a range of professional careers including journalism, archaeology, law, business, teaching, management and politics.

LAW A LEVEL

Level 3 | Duration: 2 years

📍 North Devon | FTB025

Law may be one of the most prestigious career paths you can follow and this programme of study provides an excellent grounding in the subject. You will gain an overview of the law, as well as the ability to discuss sources of law, the English Legal System and explore law, morality and justice.

You will study the law of tort, criminal law and the law of contract. When you study the English Legal System, you will learn about the progress of a criminal trial and the personnel involved in the administration of law.

You'll gain real insight into how the legal system in this country works and how and why law is made.

You will debate issues such as euthanasia, bringing back the death penalty, abortion, the rule of law and other sensitive and emotive issues that require questions of justice and morality to be considered.

ENTRY REQUIREMENTS

You must hold at least five GCSEs at grade 4 or above, including Maths, and English Language at grade 5.

PROGRESSION

Successful completion of this course can lead to university to study law or other non-law related degrees. Alternatively, you may decide to study as a legal executive with a law firm and progress through the ILEX route. Law is a useful subject to study for any career, be it science or humanities-based and can lead to roles in accountancy, psychology, business, or law.

MEDIA STUDIES A LEVEL

Level 3 | Duration: 2 years

📍 North Devon | FTB028

On this exciting Media Studies A Level, you will view, evaluate and analyse a variety of media products, and develop a range of practical skills.

The topics are varied and diverse and will help you to develop research and problem-solving skills as well as explore your own creativity.

During the course, you will study the following topics:

- Media language, media representations and media audiences.
- The film industry
- Advertising and marketing
- Music videos - production, marketing and audience
- Newspaper and radio - production, marketing and audience

ENTRY REQUIREMENTS

You must hold at least five GCSEs at grade 4 or above, including Maths, and English Language at grade 5.

PROGRESSION

Successful completion of this course can lead to a degree course, apprenticeship or employment in areas such as communications, journalism, film, marketing and sociology.

POLITICS A LEVEL

Level 3 | Duration: 2 years

📍 North Devon | FTB260

Politics explores relationships between governments, people and ideas. This course is perfect if you wish to work in and/or study governance, political systems and the ideas that drive our world.

During the course, you will study the following topics:

- The nature of UK governance
- The construction of the UK state and its politics
- The United States and comparative politics
- An introduction to political philosophy

As you progress through the course, you can look forward to relating the knowledge you have learned to other political systems around the world including the United States.

ENTRY REQUIREMENTS

You must hold at least five GCSEs at grade 4 or above, including Maths, and a grade 5 in English Language.

PROGRESSION

Politics is a sought-after A Level from all higher education institutions as it adds weight to applications in a range of subjects from sociology and law, to history. It also has high value in careers such as business, researching and campaigning.

PSYCHOLOGY A LEVEL

Level 3 | Duration: 2 years

📍 North Devon | FTB036

Psychology A Level examines many theories that try to explain human behaviour; what makes us think, feel and behave.

You will study the following topics:

- Cognitive psychology: Memory and eyewitness testimony
- Developmental psychology: The influence of our early attachments
- Psychopathology: Understanding and treating disorders like depression and phobias
- Social psychology: Conformity, obedience and independent behaviour
- Attraction and relationships: How relationships form, are maintained and break up
- Schizophrenia: Symptoms and treatments
- Forensic psychology: Profiling and psychological consequences of prison

Throughout the course, you will be involved in discussions, debates, presentations, problem-solving and group work.

ENTRY REQUIREMENTS

You must hold at least five GCSEs at grade 4 or above including grade 5 in Maths and English Language, and either grade 5 in Biology or grade 5 in both Core Science and Additional Science.

PROGRESSION

One of the greatest strengths of psychology is the variety of career paths that are available to people who study it. You can tailor your route through university and careers to focus on professions such as forensic psychology, clinical psychology, health, child psychology, advertising and education.

SOCIOLOGY A LEVEL

Level 3 | Duration: 2 years

📍 North Devon | FTB037

This stimulating and topical course enables you to better understand people's behaviour and the societal influence on their lives.

You will build up your knowledge and understanding of sociological thought and methods as well as develop your skills of analysis and evaluation.

Through this course, you will study the following topics:

- Families and households: Looking at the structure of the family and how it has changed over time
- Education: How schools influence our lives and why education is organised
- Crime and deviance: Underlying causes and trends in deviance
- Media: What influence media has on our lives

Alongside these topics, you will look at the theoretical perspectives and the methods used by sociologists to investigate society.

ENTRY REQUIREMENTS

You must hold at least five GCSEs at grade 4 or above, including Maths, and a grade 5 in English Language.

PROGRESSION

Upon successful completion of this course, you may decide to move on to higher education or seek employment. Sociology is particularly useful for careers in the civil service, local government, management, voluntary agencies, teaching, journalism, social work and nursing.

FIND OUT MORE ONLINE
petroc.ac.uk



Student Spotlight...

Geography students hosted a charity Mapathon for the Missing Maps project. The 17-strong team mapped over 4,000 individual buildings, roads, rivers and places in remote Nigerian villages!



VOCATIONAL PROGRAMMES



A City & Guilds report found that almost **20% of employers** have former apprentices working in board-level positions.



discover more!

FIND OUT MORE ONLINE
petroc.ac.uk

At Petroc, we offer a wide variety of vocational courses, T Levels and apprenticeships in a selection of subjects and levels.

Understanding how they differ and which is right for you can feel confusing so we have outlined each option below in more detail.

WHAT ARE VOCATIONAL COURSES?

Vocational courses are a style of study blending classroom tuition with practical, hands-on learning and work experience.

These courses are available in Levels 1 to 3 and are perfect if your way of learning suits a more practical approach. You'll be learning in classroom environments and will also spend a great deal of time in our workshop, studio, salon or gym spaces so that you can fully experience the real-world nature of your chosen vocation.

We have designed and created intuitive pathway routes from Level 1 to Level 3 to help you hone your skills in a particular area. This will not only elevate your technical abilities but also enhance your employment opportunities.

Vocational courses offer a comprehensive and well-structured qualification, giving you both the knowledge and skill set required to access excellent employment or higher education opportunities.

All vocational courses are graded Pass (P), Merit (M), Distinction (D) or Distinction-star (D*). For comparison, a Distinction* is equivalent to 3 A Levels at A*



OVER HALF
of students
with vocational
qualifications progress
on to higher education
after their course.¹

T LEVELS

T Levels are Level 3, two-year technical qualifications and are the gold standard in vocational education training.

They combine classroom theory, practical learning and a minimum 45-day industry placement with an employer to help you develop your industry-specific skills.

T Levels suit learners who want a more employer-led study programme that prioritises practical learning and experience. They are an ideal course if you have finished your GCSEs and are clear about your chosen career. T Levels will enhance your knowledge, skills and behaviours enabling you to progress onto an apprenticeship, higher education or directly into employment.

A T Level Distinction* is equivalent to three A Levels at A* and is recognised by universities for those looking to continue their studies.

During your industry placement you will be treated like a member of staff, expected to conduct yourself professionally and will experience a full induction to the work environment. You will also be assigned a supervisor or mentor for the duration of your placement

APPRENTICESHIPS

With an apprenticeship, your learning experience will combine a genuine job with structured teaching and is the perfect combination of hands-on experience and a salary.

You won't miss out on a college experience as a portion of your time will be spent in the classroom on campus, giving you the very best of both worlds.

Apprenticeships can last anywhere between one and four years depending on the course. They are available from Level 2 right up to Level 7 (equivalent to a postgraduate qualification) and are available across a wide range of industries including construction, business, engineering and childcare.

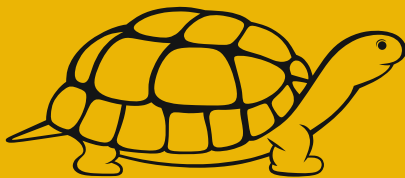
They provide an excellent route into employment with over 90% of apprentices staying on in their role after their apprenticeship has ended.

"Due to my course being an apprenticeship, four out of five days a week, I am at work as part of my course. It's an awesome way of learning a subject while making a living and gives you a lot of real-world experience."

DION, MOTOR VEHICLE APPRENTICE

¹ Career Pilot

ANIMAL CARE



Brand new £1.1m
Animal Centre
to open in 2024!



*discover
more!*

FIND OUT MORE ONLINE
petroc.ac.uk



"I enjoyed studying at Petroc as a whole - we spent time each week within the Animal Care Centre where we worked hands-on with the animals. I loved the field trips out and the projects we were able to take part in."

LAUREN, ANIMAL MANAGEMENT (FORMER PARK COMMUNITY SCHOOL STUDENT)



WHAT CAN I EXPECT?

For lovers of creatures large and small, the animal care industry is rapidly expanding and is a perfect opportunity to blend your passion with your profession.

Whether caring for animals is your dream career, or veterinary care is your aspiration, Petroc provides the best provision for animal care courses in North Devon.

So there is no better place to undertake your studies in this exciting and rewarding sector.

Our Animal Care programmes offer you the chance to immerse yourself in your passion for all creatures great and small, study with like-minded people and make a positive contribution to animal welfare.

A comprehensive blend of practical experience and supporting theoretical knowledge will suit all types of learners. You will learn how to care for a range of animals, giving you the insight and experience you need to help you choose your future career path.

Our unique on-site facilities include a rodent room, a guinea pig and rabbit room, an exotics room and an aviary - as well as an outside enclosure for our adorable pygmy goats.

These excellent practical learning spaces complement the passion and experience of our animal care experts and teachers, and our 4-legged (and sometimes 8-legged) friends will support you on your journey to a future in this growing sector.

On completing one of our Animal Care courses, Petroc alumni have gone on to pursue their dream jobs as vet nurses, animal centre managers and even wildlife conservationists. Many have gone on to undertake our Foundation Degree in Animal Conservation as well.

If animal care is where your heart is, we have everything you need to achieve your career ambitions.



There will be **7.5%** more animal care worker jobs in 2027¹



The average annual salary for a Veterinary Assistant is **£23,879**²

¹ Career Pilot

² Glassdoor



Future Careers...

Offering a wide range of exciting career opportunities in this growing sector:

- Vet
- Veterinary Nurse
- Zookeeper
- Dog Trainer
- Marine Biologist
- Pet Groomer



PUBLIC SERVICES, ANIMAL CARE & SPORT

Level 1 | Duration: 1 year

 North Devon | FTB496

This introductory programme combines classroom theory and practical learning to provide a taster in a range of subject areas. You will learn core knowledge and specific skills that underpins each of these specialisms that will allow you to progress onto a higher level of study within your chosen area.

You will undertake an assortment of study components including core and specialist modules, a tutorial programme, and the opportunity to improve your GCSE maths and English. The course will also support you in developing your study skills.

You will cover the following modules:

- Maintaining the health and wellbeing of animals
- Finding out about the public services
- Keeping active and healthy
- Developing a personal progression plan

ENTRY REQUIREMENTS

You must hold four GCSEs at grade 2, preferably including Maths and English.

PROGRESSION

Upon successful completion of this course, you can progress onto the T Level Foundation Year in Animal Care, Level 2 Diploma in Preparation for Public Services or the First Diploma in Sport.

ANIMAL CARE

Level 2 | Duration: 1 year

 North Devon | FTB456

This T Level Foundation Year Programme has been developed to help you gain the knowledge, skills and work experience needed to help you progress onto your chosen T Level.

You will gain the following:

- Technical knowledge and practical skills
- Industry-based work experience
- Relevant English, maths and digital skills
- Focused individual support and personal development

The course encompasses the Technical Certificate in Animal Care.

You will cover the following modules:

- Animal health and welfare maintenance
- Animal feeding and accommodation
- Animal behaviour and handling
- Working in the animal care industry
- Health and safety for land-based industries

ENTRY REQUIREMENTS

You must hold four GCSEs at grade 3 or above, preferably including Maths and English.

PROGRESSION

Upon successful completion of this course, you will be able to progress onto the Level 3 Animal Management course.

AGRICULTURE, ENVIRONMENT & ANIMAL CARE T LEVEL

Level 3 | Duration: 2 years

 North Devon | FTB633

T Levels ensure you meet the needs of industry by combining classroom theory, practical learning and industry placement.

This course is suitable for anyone that wants to develop their skills in animal care.

You will study the following units:

- Sustainability
- The principles of biosecurity
- Ethical principles
- Supply chain and stock management
- Business and enterprise skills
- Communication
- Customer care
- Health and safety

You will study the occupational specialism of Animal Care and Management in your second year.

You will also undertake a 315-hour (minimum) industry placement.

ENTRY REQUIREMENTS

You must hold at least five GCSEs at grade 4, including Maths and English Language. You will also be expected to have at least one pass in a science subject.

PROGRESSION

Successful completion of this course will enable you to work within animal care settings (such as a conservation organisations, kennels and catteries, animal charities and animal training) or progress onto a university-level course.

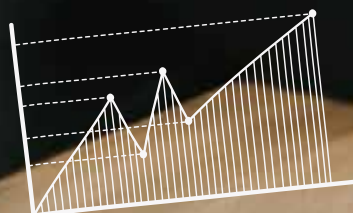


FIND OUT MORE ONLINE
petroc.ac.uk

BUSINESS & MANAGEMENT



discover
more!



FIND OUT MORE ONLINE
petroc.ac.uk





"The work experience element helps with confidence and allows you to gain more knowledge of the working world."

CORAL, BUSINESS (FORMER BRAUNTON ACADEMY STUDENT)



WHAT CAN I EXPECT?

If you see yourself as the head of an established multinational organisation or would like to start your own brand, our business and management courses will give you the skills you need to succeed.

You may want to be a project manager, lawyer, human resources consultant or entrepreneur.

Providing the knowledge and experience to step into a business, development or management role in almost any industry or sector, our courses will challenge, enlighten and inspire you.

With a wide range of industry experience behind them, our experienced lecturers are able to offer you excellent knowledge and guidance. You will also have the opportunity to hear from and speak with an incredible group of guest speakers and entrepreneurs who regularly come into Petroc to mentor and support our students.

Networking events, work experience and educational visits will further develop your contacts, help you hone your abilities and connections, and provide you with valuable opportunities to interact with local business employees. Deepening your understanding of the intricacies of the business world, these industry insights will help your progression into business or starting your own business.

Our courses will help you take the first step towards your ultimate career goal, whatever your ambition. Even if you are undecided about the direction you want to progress in, the skills learnt on a business and management course are highly transferable, meaning you will always be a great candidate for any future employment.



There were **1.08** million financial services jobs in the UK in Q1 2022 ¹



The average salary for a Finance Manager is **£53,680** ²

¹ Commons Library ² Reed.co.uk



Future Careers...

Giving you the skills you need to succeed, whatever your ambition:

- Data Analyst
- Marketing Executive
- Account Manager
- Accountant
- Marketing Director
- Human Resources Officer



BUSINESS & ADMINISTRATION

Level 2 | Duration: 1 year

📍 North Devon | FTB484

This T Level Foundation Year Programme has been developed to help you gain the knowledge, skills and work experience needed to help you progress onto your chosen T Level.

You will gain the following:

- Technical knowledge and practical skills
- Industry-based work experience
- Relevant English, maths and digital skills
- Focused individual support and personal development

The course encompasses the Extended Certificate in Business. You will also progress on to develop higher level skills.

You will study the following modules:

- Enterprise in the business world
- Finance for business
- Principles of marketing
- Introducing project management
- Effective business communication

ENTRY REQUIREMENTS

You must hold four GCSEs at grade 3 or above, preferably including Maths and English.

PROGRESSION

Upon successful completion of this programme, you will be able to progress onto a business-related T Level.

MANAGEMENT & ADMINISTRATION T LEVEL

Level 3 | Duration: 2 year

📍 North Devon | FTB389

T Levels ensure you meet the needs of industry by combining classroom theory, practical learning and industry placement.

This course is designed for anyone that wants to excel in business support.

Units you will study include:

- People
- Regulations and legislation
- Project management
- Business behaviours

You will study an occupational specialism in Business Support in your second year.

You will be required to undertake a 315-hour (minimum) industry placement over the two-year programme.

ENTRY REQUIREMENTS

You must hold at least five GCSEs at grade 4, including Maths and English Language.

PROGRESSION

Successful completion of this qualification will open up a huge range of possible careers in a variety of sectors. It will give you an advantage when applying for a job or when progressing to university.

BUSINESS & MANAGEMENT APPRENTICESHIPS

We offer a Level 2 Accounts/ Finance Assistant Apprenticeship, a Level 3 Business Administration Apprenticeship, and a Level 3 Assistant Accountant Apprenticeship.

An apprenticeship blends classroom learning with on-the-job training, meaning you can earn while you learn. You will usually spend four days in the workplace as a paid employee, with one day in the classroom where you will reinforce and further develop your skills and workplace learnings.

During your apprenticeship, you will be expected to undertake a range of predefined knowledge, skills and behaviours which will relate to your chosen business and management programme.

Depending on the level, an apprenticeship lasts between one and two years and can start at various points in the year.

ENTRY REQUIREMENTS

Each apprenticeship will have its own specific entry requirements; you can find out more on our website.

PROGRESSION

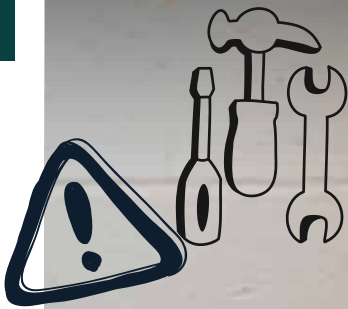
An apprenticeship is a great pathway to a rewarding and successful career, or can be a stepping stone to a higher level programme.

You can find out more about our apprenticeships at petroc.ac.uk/apprenticeships

FIND OUT MORE ONLINE
petroc.ac.uk

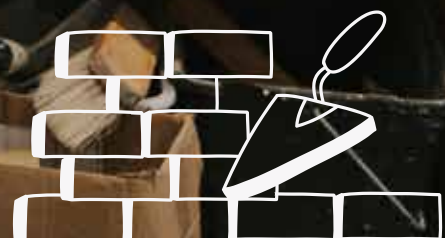


CONSTRUCTION



discover
more!

FIND OUT MORE ONLINE
petroc.ac.uk





"I have always had a keen interest in the built environment and Petroc had the best course for it."

WILL, CONSTRUCTION (FORMER PARK COMMUNITY SCHOOL STUDENT)



WHAT CAN I EXPECT?

A highly qualified and industry experienced construction worker can make the difference and create something truly exceptional. If you have a passion for building, creating or designing, Petroc has a construction course for you.

The construction industry incorporates a hugely diverse range of roles from trowel trades through to architecture and design. These are valuable and in-demand skills and our teaching structure will help you find the right career pathway to suit your ambitions.

On campus, we have a range of workshop spaces for each of our trade courses, all fully equipped with cutting-edge tools, machinery and environmental technology. We are embracing the future of construction with a keen eye on green technology and incorporating the retrofit concept for the future.

Throughout your studies, you will develop important hands-on, technical and practical skills from our highly-skilled lecturers who have a wealth of industry experience. They will support and guide you throughout your learning journey and help you achieve the highest standards in your chosen area.

Many students who study on our construction courses go on to compete in national skill competitions. Petroc alumni have become regional finalists in bricklaying as well as achieving successes in furniture making, including the Medal of Excellence from City and Guilds.

Whether your ambition is to start your own business locally or work for a larger multinational contractor, the skills you learn at Petroc will provide you with a career for the future.



The overall construction industry in the UK is forecast to increase to a revenue of **£476.6 BILLION** until 2027¹



The average annual salary for a Site Manager is **£52,500**²

¹ Statistica ² Totaljobs.com



Future Careers...

Giving you the skills you need to succeed, whatever your ambition:

- Building Surveyor
- Construction Manager
- Estates Manager
- Quantity Surveyor
- Site Engineer
- Construction Site Worker



BRICKLAYING, CARPENTRY & CONSTRUCTION SKILLS

Level 1 | Duration: 1 year

📍 North Devon | **FTB494**

📍 Tiverton | **FTT293**

This introductory programme combines classroom theory and practical learning to provide a taster in a range of subject areas. You will learn core knowledge and specific skills that underpins each of these construction specialisms that will allow you to progress onto a higher level of study within your chosen specialism.

You will undertake an assortment of study components including core and specialist modules, a tutorial programme, and the opportunity to improve your GCSE Maths and English. The course will also support you in developing your study skills.

You will cover the following modules:

- Introduction to the construction industry
- Introduction to health and safety
- Introduction to brick and block walling
- Introduction to carpentry and joinery

ENTRY REQUIREMENTS

You must hold four GCSEs at grade 2 or equivalent (or above), preferably including Maths and English.

PROGRESSION

Upon successful completion of this course, you can progress onto one of our T Level Foundation Year construction courses or an apprenticeship pathway.

PLUMBING, ELECTRICAL & CONSTRUCTION SKILLS

Level 1 | Duration: 1 year

📍 North Devon | **FTB492**

This introductory programme combines classroom theory and practical learning to provide a taster in a range of subject areas. You will learn core knowledge and specific skills that underpins each of these specialisms that will allow you to progress onto a higher level of study within your chosen area.

You will undertake an assortment of study components including core and specialist modules, a tutorial programme, and the opportunity to improve your GCSE maths and English. The course will also support you in developing your study skills.

Modules covered within this course include:

- Introduction to the construction industry
- Introduction to plumbing
- Introduction to electrical
- Introduction to health and safety

ENTRY REQUIREMENTS

You must hold four GCSEs at grade 2, preferably including Maths and English.

PROGRESSION

Upon successful completion of this course, you can progress onto one of our T Level Foundation Year courses in electrical, plumbing or construction, or an apprenticeship.

BRICKLAYING

Level 2 | Duration: 1 year

📍 North Devon | **FTB477**

This T Level Foundation Year Programme has been developed to help you gain the knowledge, skills and work experience needed to help you progress onto your chosen T Level.

You will gain the following:

- Technical knowledge and practical skills
- Industry-based work experience
- Relevant English, maths and digital skills
- Focused individual support and personal development

The course encompasses the Certificate in Brickwork.

You will study the following modules:

- Principles of construction
- Building cavity walls
- Building solid walls and piers
- Constructing basic arches
- Setting out buildings

ENTRY REQUIREMENTS

You must hold four GCSEs at grade 3 or above, including Maths and English.

PROGRESSION

Upon successful completion of this programme, you will be able to progress onto a Level 3 construction course or an apprenticeship.

BUILT ENVIRONMENT, ARCHITECTURE AND DESIGN

Level 2 | Duration: 1 year

📍 North Devon | FTB478

This T Level Foundation Year Programme has been developed to help you gain the knowledge, skills and work experience needed to help you progress onto your chosen T Level.

You will gain the following:

- Technical knowledge and practical skills
- Industry-based work experience
- Relevant English, maths and digital skills
- Focused individual support and personal development

The course encompasses the Extended Certificate in Construction and the Built Environment.

You will study the following modules:

- Construction technology
- Sustainability in construction
- Construction and design
- Scientific and mathematical applications
- Construction processes and operations
- Understanding the construction industry

ENTRY REQUIREMENTS

You must hold at least four GCSEs at grade 3 or above, including Maths and English Language.

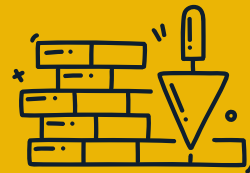
PROGRESSION

Upon successful completion of this programme, you will be able to progress onto a Level 3 construction course or an apprenticeship.



Student Spotlight...

Petroc was thrilled to welcome VELUX, who delivered a fascinating technical workshop for our construction students.



The construction sector is one of the largest in the UK economy – employing **3.1 MILLION** people¹

¹ Gov.uk



CARPENTRY

Level 2 | Duration: 1 year

 North Devon | **FTB481**

This T Level Foundation Year Programme has been developed to help you gain the knowledge, skills and work experience needed to help you progress onto your chosen T Level.

You will gain the following:

- Technical knowledge and practical skills
- Industry-based work experience
- Relevant English, maths and digital skills
- Focused individual support and personal development

The course encompasses the Certificate in Site Carpentry.

You will study the following modules:

- Principles of construction
- Structural carpentry
- Non-structural carpentry prior to plastering
- Non-structural carpentry following plastering
- Timber technology and the use of the circular saw

ENTRY REQUIREMENTS

You must hold four GCSEs at grade 3 or equivalent (or above), preferably including GCSE Maths and English.

PROGRESSION

Once you have completed this programme, you will be able to progress onto a Level 3 T Level in construction.

CONSTRUCTION SKILLS

Level 2 | Duration: 1 year

 Tiverton | **FTT311**

This T Level Foundation Year Programme has been developed to help you gain the knowledge, skills and work experience needed to help you progress onto your chosen T Level.

You will gain the following:

- Technical knowledge and practical skills
- Industry-based work experience
- Relevant English, maths and digital skills
- Focused individual support and personal development

This course encompasses the Certificate in Brickwork or Site Carpentry.

This course will be delivered through a simulated real-life on-site project erecting a full-size bungalow within the workshop area.

ENTRY REQUIREMENTS

You must hold four GCSEs at grade 3, preferably including Maths and English.

PROGRESSION

Upon successful completion of this programme, you will be able to progress onto a Level 3 construction course or an apprenticeship.

BUILDING SERVICES ENGINEERING FOR CONSTRUCTION T LEVEL

Level 3 | Duration: 2 year

 North Devon | **FTB501**

Successful completion of this qualification will allow you to progress onto university, into an apprenticeship or directly into employment working in engineering or manufacturing.

T Levels ensure you meet the needs of industry by combining classroom theory, practical learning and industry placement.

You will study the following:

- Making accurate and appropriate measurements
- Construction methods
- Building regulations and standards
- Digital engineering techniques
- Mathematical techniques to solve construction problems
- Design principles and processes
- The environmental impact of construction
- Building technology principles
- Engineering systems maintenance principles
- Tools, equipment and materials

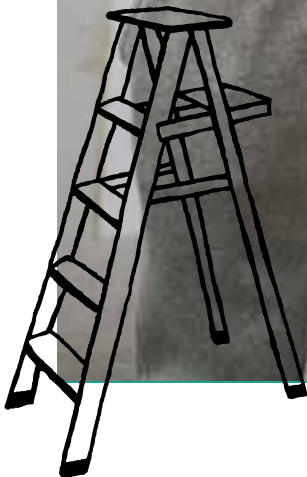
You will also choose an occupational specialism from Plumbing & Heating or Electrotechnical.

ENTRY REQUIREMENTS

You must hold at least four GCSEs at grade 4, including Maths and English Language.

PROGRESSION

Upon successful completion of this programme, you will be able to progress onto a Level 3 construction course or an apprenticeship.



CONSTRUCTION T LEVEL (DESIGN, SURVEYING & PLANNING)

Level 3 | Duration: 2 years

 North Devon | FTB370

T Levels ensure you meet the needs of industry by combining classroom theory, practical learning and industry placement.

The course is split into core components that are common to all Construction T Levels, plus a choice of one occupational specialism.

The core components provide a broad understanding of the construction and architecture industry and cover topics such as health and safety, design, sustainability, building technology, project management and law.

The specialisms you can choose from are:

- Surveying and design for construction and the built environment
- Civil engineering
- Building services design
- Hazardous materials analysis and surveying

You will also undertake a 315-hour (minimum) industry placement.

ENTRY REQUIREMENTS

You must hold at least five GCSEs at grade 5. This must include grade 5 in Maths, English and Science.

PROGRESSION

Successful completion of this qualification will give you an advantage when applying for a job in construction or when progressing to further study.

ONSITE CONSTRUCTION T LEVEL (CARPENTRY)

Level 3 | Duration: 3 years

 North Devon | FTB548

T Levels ensure you meet the needs of industry by combining classroom theory, practical learning and industry placement.

The course is split into core components that are common to all Construction T Levels, plus a choice of one occupational specialism.

The core components provide a broad understanding of the construction and BSE industry. Topics include health and safety, construction science principles, sustainability in construction and BSE systems. You will also develop transferable skills in communication, research and project work.

You will study your occupational specialism of Carpentry in your second year.

ENTRY REQUIREMENTS

You must hold at least five GCSEs at grade 4. This must include grade 5 in Maths and English Language.

PROGRESSION

Successful completion of this qualification will open up a range of careers in on-site construction. It will also give you an advantage when applying for a job in the industry or when progressing to further study.

ONSITE CONSTRUCTION T LEVEL (BRICKLAYING)

Level 3 | Duration: 2 years

 North Devon | FTB631

T Levels ensure you meet the needs of industry by combining classroom theory, practical learning and industry placement.

The course is split into core components that are common to all Construction T Levels, plus a choice of one occupational specialism.

The core components provide a broad understanding of the construction and BSE industry. Topics include health and safety, construction science principles, sustainability in construction and BSE systems. You will also develop transferable skills in communication, research and project work.

You will study your occupational specialism of Bricklaying in your second year.

ENTRY REQUIREMENTS

You must hold at least five GCSEs at grade 4. This must include grade 5 in Maths and English Language.

PROGRESSION

Successful completion of this qualification will open up a range of careers in on-site construction. It will also give you an advantage when applying for a job in the industry or when progressing to further study.

CONSTRUCTION APPRENTICESHIPS

We offer a wide range of Level 2 apprenticeships relating to construction including carpentry and joinery, and bricklaying.

An apprenticeship blends classroom learning with on-the-job training, meaning you can earn while you learn. You will usually spend four days in the workplace as a paid employee, with one day in the classroom where you will reinforce and further develop your skills and workplace learnings.

During your apprenticeship, you will be expected to undertake a range of predefined knowledge, skills and behaviours which will relate to your chosen programme.

Depending on the level, an apprenticeship lasts between one and two years and can start at various points in the year.

ENTRY REQUIREMENTS

Each apprenticeship will have its own specific entry requirements; you can find out more on our website.

PROGRESSION

An apprenticeship is a great pathway to a rewarding and successful career, or can be a stepping stone to a higher level programme.

You can find out more about our apprenticeships at petroc.ac.uk/apprenticeships

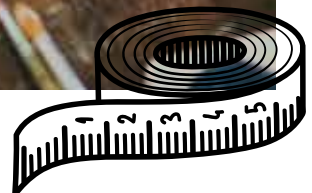


CREATIVE INDUSTRIES



discover
more!

FIND OUT MORE ONLINE
petroc.ac.uk





"The teachers are so helpful and the work is always so fun and interesting, you will learn processes that you never knew existed! Joining this course is one of the best decisions I've made!"

MIA, ART & DESIGN (FORMER TIVERTON HIGH SCHOOL STUDENT)



WHAT CAN I EXPECT?

Are you passionate about performance, creativity and communicating amazing new ideas?

Employing millions of innovative and groundbreaking individuals worldwide, the creative industries include everything from art, media and music to performing arts and dance.

Whatever your ideas and interests are in this area, you will be given the opportunity to hone your talent and explore your creativity.

These are competitive industries, but our courses will help you develop your skills and stand out in the crowd.

Our expert lecturers have a huge amount of experience and knowledge to share and will support you every step of the way.

Music and performing arts students will have the chance to get involved in a wide selection of performances throughout the year, and will collaborate with other creative industries students on productions.

With full access to our facilities which boasts live performance venues, a large dance studio, rehearsal studios, sound-proofed rehearsal booths, high-spec recording studios and IT suites, you have everything you need at your fingertips.

Media and art students benefit from spacious and inspiring studios housing a variety of high-spec kit including 3D printers, Apple Macs, darkrooms, editing suites and screen printers. This gives you the opportunity to explore a range of creative pursuits and activities.

Petroc students have gone on to achieve success across the creative industries, from performers to technicians, composers to designers, and filmmakers to fine artists.

All students progress onto their first choice university places and many of our performing arts alumni have been accepted into prestigious, internationally renowned schools and conservatoire.



The UK has almost **2.3m** creative industry jobs ¹



The average salary for an Illustrator is **£29,325** ²

¹ Creative Industries Council ² Talent.com



Future Careers...

Exiting and innovative careers in the palm of your hand:

- Animator
- Graphic Designer
- Illustrator
- Photographer
- Actor
- Choreographer
- Musical Theatre Performer
- Stage Manager
- Music Producer



ART AND DESIGN

Level 2 | Duration: 1 year

📍 North Devon | **FTB473**

This Diploma in Art and Design has been developed to help you gain the knowledge, skills and work experience needed to progress in this exciting field.

You will study the following modules:

- Introduction to materials, processes and technical skills in art and design
- Introduction to contextual research in art and design
- Introduction to drawing skills
- Introduction to communication skills in art and design
- Solving 2D creative problems
- Solving 3D creative problems
- Solving time-based creative problems
- Developing and producing a personal project in art and design

ENTRY REQUIREMENTS

You must hold four GCSEs at grade 3 or above, including Maths, English and Art.

PROGRESSION

Upon successful completion of this programme, you will be able to progress onto one of our Level 3 Art and Design courses,

CREATIVE MEDIA PRODUCTION & TECHNOLOGY

Level 2 | Duration: 1 year

📍 North Devon | **FTB475**

This Diploma in Creative Media Production & Technology will enable you to gain a broad understanding of the discipline and prepare you for progression paths and careers in this fascinating industry.

You will study the following modules:

- Creative media methods and skills
- Production techniques
- Understanding the audience
- Contextual research
- Exploring audio, visual, and interactive media production and technology
- Producing a personal project

ENTRY REQUIREMENTS

You must hold four GCSEs at grade 3 or above, preferably including Maths and English.

PROGRESSION

Upon successful completion of this programme, you will be able to progress onto one of our Level 3 Media courses..

ART, DESIGN & COMMUNICATION

Level 3 | Duration: 2 year

📍 North Devon | **FTB047**

If you love art and think you would like to make a career out of it, then this course is for you.

In a dedicated studio space, you'll experiment with materials and techniques from disciplines as diverse as Drawing, Painting, Fashion, Animation, Printing, Graphics, Illustration, Photography, Textiles and 3D.

During the course, you will study the following units:

- The creative process
- Developing creative practice
- Responding to a set brief
- Researching a specialist industry practice
- Specialist technical skills development
- Specialist creative outcome

Work experience includes opportunities to be involved in live industry briefs, public exhibitions, open events, running workshops, self-promotion, visiting artists' talks, and national competitions.

ENTRY REQUIREMENTS

You must hold at least five GCSEs at grade 4 or above, including Maths and English Language and a design-related subject. You will also be asked to show a portfolio of work.

PROGRESSION

On successful completion, you could progress on to a degree in art and design, or you might wish to undertake freelance work or an apprenticeship.

Student Spotlight...

Creative Industries students put on a stunning Christmas variety show at the Landmark Theatre. 'Petroc Christmas Cracker' featuring dance, physical theatre, stand-up and live music!



CREATIVE MEDIA PRODUCTION & TECHNOLOGY

Level 3 | Duration: 2 years

 North Devon | FTB268

This Creative Media course could set you on the pathway to a job in filmmaking, photography, editing, social media, content creation, podcasting, branding, animation, video game design, graphics design, VFX or interactive media!

You will enhance your technical expertise through hands-on workshops with industry-standard equipment and technology.

During the course, you will study the following units:

- Introduction to creative media skills and technology
- Music promotion
- Video games and sound
- Promotional media and advertising
- Progression and entrepreneurship
- Specialist study

ENTRY REQUIREMENTS

You must hold at least five GCSEs at grade 4 or above, including Maths and English Language.

You will also be asked to provide a small portfolio of recent Creative Media projects showing your skills and interest in Creative Media and reflecting your chosen specialism.

PROGRESSION

Upon successful completion of this course, you could continue your studies at university, set up a freelance production company or move directly into employment.

MUSIC PERFORMANCE & PRODUCTION

Level 3 | Duration: 2 years

 North Devon | FTB629

If you are a music enthusiast looking to take your passion to the next level, this course is just for you!

During the course, you will study the following units:

- Rehearsal skills and techniques
- Advanced skills including solo performance, live sound and sound design
- Music theory and composition skills
- Music production skills for recording and sequencing
- Critical listening skills
- Methods and skills for creative production

ENTRY REQUIREMENTS

You must hold at least five GCSEs at grade 4 or above, including Maths and English Language.

PROGRESSION

Upon successful completion of this qualification, you could continue your studies at university or move into employment as a session musician, sound engineer or composer.

PERFORMING & PRODUCTION ARTS

Level 3 | Duration: 2 years

 North Devon | FTB630

This course will give you a sound understanding of acting, dance, musical theatre and production.

You will build your performing skills through classes as well as creating and performing work in various venues.

During the course, you will study the following topics:

- Voice
- Improvisation
- Devising
- Various dance styles
- Audition skills
- Singing
- Acting skills
- Production work

ENTRY REQUIREMENTS

You must hold at least five GCSEs at grade 4 or above, including Maths and English Language.

PROGRESSION

Upon successful completion of this qualification, you could continue your studies at university or move into employment in the wide and varied performing arts industry.

FOUNDATION DIPLOMA IN ART & DESIGN

Level 3 | Duration: 2 years

North Devon | FTB046

This Foundation Diploma will help bolster your emerging portfolio and get you ready for Higher Education applications. You will be introduced to concepts and artists that will inspire you and challenge the way you create, think and write about art.

Topics will include drawing, painting, fashion, animation, printing, graphics, illustration, photography, textiles and 3D.

During the course, you will cover three main units:

- Investigate visual language and creative practices to become familiar with creative disciplines to support you in your specialism.
- Reflect on the knowledge, skills and practices you have developed and define your creative ambitions.
- Independently research, complete and evaluate a project proposal within your chosen professional context.

There will also be opportunities to visit galleries and exhibitions.

ENTRY REQUIREMENTS

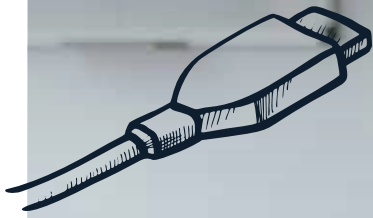
You will be expected to have completed a two-year Art and Design course. Alternatively, you will be asked to provide a portfolio of work.

PROGRESSION

Upon completion of this diploma you may wish to progress to relevant specialist university courses, either at Petroc or further afield. Alternatively, you may move directly into a career within the creative industries.



DIGITAL & TECHNOLOGIES



*discover
more!*

FIND OUT MORE ONLINE
petroc.ac.uk

SOUTH WEST
INSTITUTE OF
TECHNOLOGY



"I most enjoyed the variety of the IT sessions, including software development, networking, and cybersecurity. I also enjoyed the high-quality modern facilities."

JOSHUA, DIGITAL (FORMER LAMPARD COMMUNITY SCHOOL STUDENT)



WHAT CAN I EXPECT?

Rapidly expanding and constantly evolving, the digital technology sector is innovative, bold and exciting and offers a huge choice of careers and roles where salaries can reach six figures. The sky really is the limit here.

IT professionals and their skills are always in high demand and the knowledge you gain from one of our courses will allow you to work in almost any industry in a growing number of exciting, varied and well-paid roles.

Using an up-to-date range of industry-standard hardware and software, you will gain experience on topics such as web and desktop application development, networking, programming and gaming.

Our expert lecturers all have a wealth of experience in the commercial sector and will support your learning and career ambitions through the practical and theoretical structure of taught lessons and projects.

Upon completion of our IT courses, Petroc alumni have gone on to start their own businesses, build careers in areas such as software development, game design, IT support, website building and mobile applications. Many have also progressed on to our degree-level IT course.



By **2025**, it is estimated that there will be **678,100** jobs in the UK's digital sector.¹



The average salary for a Software Developer is **£43,014**²

¹ Statista

² Glassdoor.co.uk



Future Careers...

Giving you the skills you need to succeed, whatever your ambition:

- Database Administrator
- Cyber Security Analyst
- Games Developer
- Web Developer
- IT Consultant
- Software Engineer



DIGITAL & TECHNOLOGIES

Level 2 | Duration: 1 year

 North Devon | FTB489

This T Level Foundation Year Programme has been developed to help you gain the knowledge, skills and work experience needed to help you progress onto your chosen T Level.

You can expect to gain the following:

- Technical knowledge and practical skills
- Industry-based work experience
- Relevant English, maths and digital skills
- Focused individual support and personal development

The course encompasses the Certificate in Cyber Security and the Certificate in Understanding Coding.

You will study the following units:

- Introduction to cyber security
- Terminology used
- Legal and ethical aspects
- Common threats
- Principles of coding
- Terminology used in coding
- Coding design principles
- Communication and project management

ENTRY REQUIREMENTS

You must hold four GCSEs at grade 3 or above, including Maths and English.

PROGRESSION

Upon successful completion of this course, you can go on to study one of our Level 3 courses

DIGITAL PRODUCTION, DESIGN AND DEVELOPMENT T LEVEL

Level 3 | Duration: 2 years

 North Devon | FTB366

T Levels ensure you meet the needs of industry by combining classroom theory, practical learning and industry placement.

This qualification has been designed to deliver the skills required to get an exciting role in Digital Production, Design and Development.

You will study the following units:

- Problem-solving
- Programming
- Emerging issues and the impact of digital
- Legislation and regulatory requirements
- Business context
- Data
- Digital environments
- Security

You will study Design and Development as your occupational specialism.

You will also undertake a 315-hour (minimum) industry placement.

ENTRY REQUIREMENTS

You must hold at least five GCSEs at grade 4 or above, including grade 5 in Maths and English Language.

PROGRESSION

On successful completion of this qualification, you could move into a huge range of possible careers or progress to further study.

SOUTH WEST
I N S T I T U T E O F
T E C H N O L O G Y



EDUCATION & CHILDCARE



discover
more!

ABC

FIND OUT MORE ONLINE
petroc.ac.uk





"I wanted to do a course in childcare locally, so I started with the Level 2 Childcare programme, and progressed to Level 3. I liked everything equally - the college experience, the practical classes, and the work placements!"

KEZIA, CHILDCARE (FORMER PILTON COMMUNITY COLLEGE STUDENT)



WHAT CAN I EXPECT?

If nurturing, guiding or teaching the next generation is where you see yourself, then Petroc can help you develop your passion for education or childcare on one of our outstanding courses.

Whether your dream job is working in a primary school or a nursery setting, we can give you the skills to make your career goals a reality.

Perfectly suited to those with caring and patient natures, education and early years childcare roles are hugely important and very rewarding.

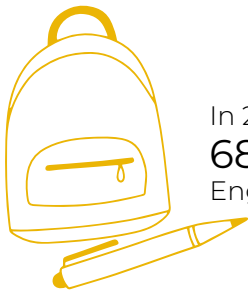
We have a team of dedicated, expert lecturers with a wealth of experience in working with children and young people. They will share their wisdom and experience with you as you learn the unique and wide-ranging skills you need to succeed in these roles.

You will practise your skills in a 'true to life' training room at our North Devon campus, undertake fantastic work experience opportunities and learn to support the children in your care.

For the last 10 years, we have offered an exciting opportunity to visit Sweden to see how their innovative and highly successful Forest Schools are run, allowing you to gain valuable hands-on experience and insight into this rapidly expanding area of childcare.

There is a vast and varied number of career and professional pathways available to students who complete courses in education and childcare which include teachers, teaching assistants, early years practitioners, professional nannies and working with children with additional needs.

At Petroc, we also offer a range of childhood-related higher education courses to help you progress even further towards your perfect career.



In 2022, there were approximately **68,025** childcare providers in England¹



The average salary for a Nursery Teacher is **£36,563**²

¹ Statista ² Reed.co.uk



Future Careers...

Offering a huge variety of career and professional pathways:

- Childminder
- Early Years Play Leader
- Primary School Teacher
- Secondary School Teacher
- Nursery Manager
- Forest School Leader



HEALTH, CHILDCARE & EDUCATION

Level 1 | Duration: 1 year

 North Devon | FTB495

This introductory programme combines classroom theory and practical learning to provide a taster in a range of subject areas. You will learn the core knowledge that underpins each industry and develop occupationally-specific skills that will allow you to progress onto a higher level of study within your chosen specialism.

The course encompasses qualifications in Health & Social Care and Caring for Children.

You will study the following modules:

- Health and safety with young children
- Growth and development of young children
- Communication in Health & Social Care
- Principles and values in Health & Social Care

ENTRY REQUIREMENTS

You must hold four GCSEs at grade 2 or above, including Maths and English.

PROGRESSION

Upon successful completion of this course, you can progress onto one of our T Level Foundation Year courses in Education and Childcare or Health and Social Care.

EDUCATION & CHILDCARE

Level 2 | Duration: 1 year

 North Devon | FTB472

This T Level Foundation Year Programme has been developed to help you gain the knowledge, skills and work experience needed to help you progress onto your chosen T Level.

You will gain the following:

- Technical knowledge and practical skills
- Industry-based work experience
- Relevant English, maths and digital skills
- Focused individual support and personal development

The course will provide you with a broad introduction to education and childcare through industry-relevant technical knowledge and practical skills.

You will study the following modules:

- Plan play, learning or educational activities for children and young people
- Prepare environments for children and young people
- Observe children and young people's learning and development

ENTRY REQUIREMENTS

You must hold four GCSEs at grade 3 or above, including Maths and English.

PROGRESSION

Once you have completed this programme, you will be able to progress onto one of our T Levels in Education & Childcare or Teaching.

SUPPORTING TEACHING & LEARNING (TEACHING ASSISTANT)

Level 2 | Duration: 1 year

 North Devon | FTB109

This programme has been designed to support your learning and help you discover and evaluate your natural abilities and skills in the classroom.

The study programme combines both knowledge and competency.

You will study the following modules:

- Schools and colleges as organisations
- Children and young people's development
- Safeguarding
- Equality, Diversity and Inclusion
- Maintaining relationships with children and young people
- Health and safety
- Positive behaviour in a learning environment
- Teamwork in a learning environment
- Understand play and leisure
- Effective learning environments

You will also undertake the equivalent of two days of work experience each week.

ENTRY REQUIREMENTS

You must hold four GCSEs at grade 3 or above, preferably including Maths and English. You need to be at least 17 years of age to join this programme.

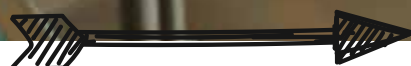
PROGRESSION

After completing this qualification, you can progress to the Level 3 Support for Teaching and Learning course, or enter into employment within the sector.

AB C D E F G
H I J K L M N O P
Q R S T U V W
X Y Z

Student Spotlight...

Former Petroc Childcare and Education student, Talia, talked to students about her experiences at prestigious Norland College where she is studying to be a professional nanny.



EDUCATION & CHILDCARE (EARLY YEARS) T LEVEL

Level 3 | Duration: 2 years

📍 North Devon | FTB470

T Levels ensure you meet the needs of industry by combining classroom theory, practical learning and industry placement.

This T Level programme focuses on children under the age of five, and combines the following core units with practical application while working in a setting in the community:

- Child development
- Safeguarding
- Observation and assessment
- Parents, families and carers

As well as the core units, you will complete an employer-set project to complement the theory and practical aspects of the qualification.

You will study the knowledge and skills of an Early Years Educator as your occupational specialism.

ENTRY REQUIREMENTS

You must hold at least five GCSEs at grade 4 or above, including GCSE Maths and English Language.

PROGRESSION

Once completed, this qualification will open the door to a huge range of possible careers in this sector. Or, you could study further, either at Petroc or at another university, for an Early Childhood Studies degree.

EDUCATION & CHILDCARE (TEACHING) T LEVEL

Level 3 | Duration: 2 years

📍 North Devon | FTB367

T Levels ensure you meet the needs of industry by combining classroom theory, practical learning and industry placement.

This NCFE qualification will ensure that you will develop into a high-quality, skilled practitioner that the early years sector demands.

You will study the following modules:

- Special Educational Needs and Disability (SEND)
- Supporting education
- Safeguarding
- English as an Additional Language (EAL)

As well as the core units, you will complete an employer-set project.

You will study Teaching as your occupational specialism.

An essential component of this qualification will be to undertake a 315-hour (minimum) industry placement.

ENTRY REQUIREMENTS

You must hold at least five GCSEs at grade 4 or above, including Maths, English Language and Science.

PROGRESSION

Once completed, this qualification will open the door to a huge range of possible careers in this sector. Or, you could study further, either at Petroc or at another university, for a Teaching and Learning degree.

SUPPORT FOR TEACHING & LEARNING (TEACHING ASSISTANT)

Level 3 | Duration: 1 year

📍 North Devon | FTB110

This qualification will provide you with the knowledge and skills needed when working with children and young people.

You will study the following modules:

- Child and young person development
- Safeguarding and wellbeing
- Schools as organisations
- Supporting English and Maths skills
- Children and young people's positive behaviour
- Professional relationships
- Support assessment for learning
- Personal development
- Children and young people's health
- Support during learning activities
- Support during transitions
- Support with SEND
- Support with speech, language and communication

You will spend one day per week in college and work/volunteer up to three days per week in a placement setting.

ENTRY REQUIREMENTS

You must hold at least five GCSEs at grade 4 or above, including GCSE Maths and English Language, or a Level 2 qualification at Merit.

PROGRESSION

Upon successful completion of this course, you could undertake a degree in Teaching and Learning, or move into specialist employment in the industry.

EDUCATION & CHILDCARE APPRENTICESHIPS

We offer a Level 3 Early Years Educator Apprenticeship.

An apprenticeship blends classroom learning with on-the-job training, meaning you can earn while you learn. You will usually spend four days in the workplace as a paid employee, with one day in the classroom where you will reinforce and further develop your skills and workplace learnings.

During your apprenticeship, you will be expected to undertake a range of predefined knowledge, skills and behaviours which will relate to your chosen programme.

Depending on the level, an apprenticeship lasts between one and two years and can start at various points in the year.

ENTRY REQUIREMENTS

Each apprenticeship will have its own specific entry requirements; you can find out more on our website.

PROGRESSION

An apprenticeship is a great pathway to a rewarding and successful career, or can be a stepping stone to a higher level programme.

You can find out more about our apprenticeships at petroc.ac.uk/apprenticeships

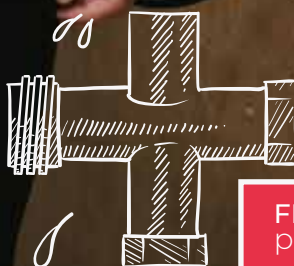


ELECTRICAL & PLUMBING



Student Spotlight...

Electrical and plumbing students took part in workshops and attended a motivational presentation by eFIXX. They provided insights on the importance of the industry, as well as the latest trends and developments.



*discover
more!*

FIND OUT MORE ONLINE
petroc.ac.uk

"I chose to do an electrical apprenticeship at college as I always enjoyed the more practical aspects of school. I enjoyed learning new things that I had a genuine interest in."

WILL, ELECTRICAL APPRENTICESHIP

WHAT CAN I EXPECT?

Good electricians and plumbers are like gold dust and will always be in demand. They are the trades that have a reputation for providing highly competent skilled operators.

These skill sets will open doors into a wide spectrum of career opportunities for you. You might set up your own company, be employed in-house in virtually any industry sector, or could even end up working on world tours and music festivals creating intricate sets and lighting rigs.

When you study on one of our electrical or plumbing courses, you'll gain the skills and experience to reach the top of your chosen field.

Our courses will teach you the requirements and technical needs of differing jobs and work settings, how to test and safely install fittings, alongside understanding all the strict regulations for health, safety and maintenance.



Electrical Engineer occupations are estimated to grow by **105%** by 2027¹

At Petroc, we have state-of-the-art plumbing and electrical workshops, built to the highest standards and fully equipped with the latest testing and commissioning equipment. Learning and developing your trade in this environment will set you apart and establish your abilities as a dedicated industry professional.

Our team of highly-skilled and experienced lecturers will guide and support you every step of the way, to ensure you start your chosen career with knowledge and confidence.

We encourage our students to enter trade-focussed competitions and are extremely proud that Petroc alumni have won many regional and national skills awards.

Whether you'd like to run your own business or prefer the idea of joining an established company, the experience you gain from our electrical and plumbing courses will provide you with the experience, skills and knowledge to forge a successful career.



The average salary for a Plumber is **£31,787**²

¹ Career Smart ² Totaljobs.com



Future Careers...

Forge a successful career in this in-demand sector:

- Air Conditioning Engineer
- Building Services Engineer
- Electrical Engineer
- Electrician
- Plumber
- Solar Panel Electrician



PLUMBING, ELECTRICAL & CONSTRUCTION SKILLS

Level 1 | Duration: 1 year

📍 North Devon | FTB492

This introductory programme combines classroom theory and practical learning to provide a taster in a range of subject areas. You will learn core knowledge and specific skills that underpin each of these specialisms that will allow you to progress onto a higher level of study within your chosen area.

You will undertake an assortment of study components including core and specialist modules, a tutorial programme, and the opportunity to improve your GCSE maths and English. The course will also support you in developing your study skills.

You will study the following modules:

- Introduction to the construction industry
- Introduction to health and safety in the construction industry
- Introduction to plumbing
- Introduction to electrical

ENTRY REQUIREMENTS

You must hold four GCSEs at grade 2 or above, preferably including Maths and English.

PROGRESSION

Upon successful completion of this course, you can progress onto one of our T Level Foundation Year courses in electrical, plumbing or construction, or an apprenticeship.

ELECTRICAL INSTALLATION

Level 2 | Duration: 1 year

📍 North Devon | FTB474

This T Level Foundation Year Programme has been developed to help you gain the knowledge, skills and work experience needed to help you progress onto your chosen T Level.

You will gain the following:

- Technical knowledge and practical skills
- Industry-based work experience
- Relevant English, maths and digital skills
- Focused individual support and personal development

The course encompasses a Certificate in Electrical.

You will study the following modules:

- Principles of construction
- Safe working practices
- Scientific principles relative to the electrical industry
- Electrical installations in domestic dwellings

ENTRY REQUIREMENTS

You must hold four GCSEs at grade 3 or above, preferably including Maths and English.

PROGRESSION

After completing this qualification, you can progress on to a Level 3 Construction T Level, or undertake an electrical apprenticeship.

PLUMBING

Level 2 | Duration: 1 year

📍 North Devon | FTB465

This T Level Foundation Year Programme has been developed to help you gain the knowledge, skills and work experience needed to help you progress onto your chosen T Level.

You will gain the following:

- Technical knowledge and practical skills
- Industry-based work experience
- Relevant English, maths and digital skills
- Focused individual support and personal development

The course encompasses the Certificate in Plumbing.

You will study the following modules:

- Principles of construction
- Hot and cold water systems
- Drainage
- Renewable technology

ENTRY REQUIREMENTS

You must hold four GCSEs at grade 3 or above, preferably including Maths and English.

PROGRESSION

After completing this qualification, you can progress on to a Level 3 Construction T Level, or undertake a plumbing apprenticeship.

BUILDING SERVICES ENGINEERING FOR CONSTRUCTION T LEVEL

Level 3 | Duration: 2 years

 North Devon | FTB501

T Levels ensure you meet the needs of industry by combining classroom theory, practical learning and industry placement.

You will study the following units:

- Making accurate and appropriate measurements
- Construction methods
- Building regulations and standards
- Digital engineering techniques
- Mathematical techniques to solve construction problems
- Design principles and processes
- The environmental impact of construction
- Building technology principles
- Engineering systems maintenance principles
- Tools, equipment and materials

You will also choose an occupational specialism from Plumbing & Heating or Electrotechnical.

ENTRY REQUIREMENTS

You must hold at least four GCSEs at grade 4 or above, including Maths and English Language.

PROGRESSION

Upon successful completion of this programme, you will be able to progress onto a Level 3 construction course or an apprenticeship.

ELECTRICAL & PLUMBING APPRENTICESHIPS

We offer Level 3 apprenticeships in Installation/Maintenance Electrician and Plumbing & Domestic Heating.

An apprenticeship blends classroom learning with on-the-job training, meaning you can earn while you learn. You will usually spend four days in the workplace as a paid employee, with one day in the classroom where you will reinforce and further develop your skills and workplace learnings.

During your apprenticeship, you will be expected to undertake a range of predefined knowledge, skills and behaviours which will relate to your chosen programme.

Depending on the level, an apprenticeship lasts between one and two years and can start at various points in the year.

ENTRY REQUIREMENTS

Each apprenticeship will have its own specific entry requirements; you can find out more on our website.

PROGRESSION

An apprenticeship is a great pathway to a rewarding and successful career, or can be a stepping stone to a higher level programme.

You can find out more about our apprenticeships at petroc.ac.uk/apprenticeships

ENGINEERING & MANUFACTURING

Student Spotlight...

Engineering and Manufacturing students visited aerospace engineering firm, Helitune.

It was a fantastic opportunity to gain real insight into the businesses and careers available in North Devon - and to meet engineers and test pilots!



discover more!

FIND OUT MORE ONLINE
petroc.ac.uk

SOUTH WEST

I N S T I T U T E O F
T E C H N O L O G Y



"I most enjoy the relaxed environment and that the timelines are your own, so you can manage your own time."

JASON, ENGINEERING & MANUFACTURING (FORMER BIDEFORD COLLEGE STUDENT)



WHAT CAN I EXPECT?

Creating tools for towering structures or developing intricate solutions to solve manufacturing dilemmas, we want the big thinkers and the tiny detail obsessives.

If you have drive, ambition and imagination and you see yourself stepping into a career in engineering or manufacturing, there's no better place to study than Petroc.

With an outstanding reputation in the engineering and manufacturing sectors, the South West and North Devon in particular, are home to a number of global players in the pharmaceutical, aeronautical and marine industries.

Our established and highly regarded Engineering and Manufacturing courses help students to develop a range of skills and disciplines including CAD, 3D printing, fabrication and welding, and manual machining.

With expert teaching delivered by dedicated, professional engineers with decades of experience, we can support you to find the perfect career pathway to suit your abilities, aims and ambitions.

All of our purpose-built engineering workshops feature cutting-edge machinery, and fabrication and welding bays, offering the perfect environment for you to learn, experiment and build your skills.

A qualification in engineering and manufacturing opens up a wealth of potential career opportunities to you including everything from CAD technician to aerospace engineer. Many of our students progress onto a higher-level engineering course at Petroc.



Women make up **16.5%** of all engineers, compared to 10.5% reported in 2010.¹



The average annual salary for a Mechanical Engineer is **£32,350**²

¹ Women's Engineering Society ² Payscale.com



Future Careers...

Opening up a wealth of potential career opportunities:

- Aerospace Engineer
- Automotive Engineer
- CAD Technician
- Maintenance Engineer
- Mechanical Engineer
- Nuclear Engineer



TRANSPORT & ENGINEERING

Level 1 | Duration: 1 year

📍 North Devon | **FTB493**

This introductory programme combines classroom theory and practical learning to provide a taster in a range of subject areas. You will learn core knowledge and specific skills that underpin each of these transport and engineering specialisms that will allow you to progress onto a higher level of study within your chosen area.

You will undertake an assortment of study components including core and specialist modules, a tutorial programme, and the opportunity to improve your GCSE maths and English. The course will also support you in developing your study skills.

You will study the following modules:

- Introduction to a range of engineering techniques
- Introduction to a range of welding techniques
- Introduction to light vehicle maintenance and repair

ENTRY REQUIREMENTS

You must hold four GCSEs at grade 2 or above, including Maths and English.

PROGRESSION

Upon successful completion of this course, you can progress onto the T Level Foundation Year in Engineering and Manufacturing, Diploma in Light Vehicle Maintenance and Repair, or an apprenticeship.

ENGINEERING & MANUFACTURING

Level 2 | Duration: 1 year

📍 North Devon | **FTB479**

This T Level Foundation Year Programme has been developed to help you gain the knowledge, skills and work experience needed to help you progress onto your chosen T Level.

You will gain the following:

- Technical knowledge and practical skills
- Industry-based work experience
- Relevant English, maths and digital skills
- Focused individual support and personal development

The course encompasses the Diploma in Engineering.

You will study the following modules:

- Working in an engineering environment
- Engineering and manufacturing principles
- Bench fitting techniques
- Using a lathe
- Using a milling machine

ENTRY REQUIREMENTS

You must hold at least four GCSEs at grade 3 or above, including Maths and English Language.

PROGRESSION

After completing this qualification, you can progress on to one of our engineering T Levels or undertake an apprenticeship.

ENGINEERING, MANUFACTURING PROCESSING & CONTROL T LEVEL

Level 3 | Duration: 2 years

📍 North Devon | **FTB071**

T Levels ensure you meet the needs of industry by combining classroom theory, practical learning and industry placement.

You will undertake core units as well as your occupational specialism in Machining and Toolmaking.

The core units include:

- Essential maths and science
- Materials and their properties
- Mechanical, electrical and electronic principles
- Mechatronics
- Quality management
- Stock and asset management

For your occupational specialism, you will study the following:

- Materials structure, composition and properties
- Tools and fixtures
- Data and project analysis
- Maintenance and checking for faults
- Producing products to specification
- Project management

You will also undertake a 315-hour (minimum) industry placement.

ENTRY REQUIREMENTS

You must hold at least five GCSEs at grade 5 or above. This must include grade 5 in Maths and English Language.

PROGRESSION

Successful completion of this qualification will allow you to progress onto university, into an apprenticeship or directly into employment working in engineering or manufacturing.

ENGINEERING & MANUFACTURING APPRENTICESHIPS

We offer a wide range of Level 2 and Level 3 engineering and manufacturing apprenticeships relating to maintenance, operating and fitting.

An apprenticeship blends classroom learning with on-the-job training, meaning you can earn while you learn. You will usually spend four days in the workplace as a paid employee, with one day in the classroom where you will reinforce and further develop your skills and workplace learnings.

During your apprenticeship, you will be expected to undertake a range of predefined knowledge, skills and behaviours which will relate to your chosen programme.

Depending on the level, an apprenticeship lasts between one and two years and can start at various points in the year.

ENTRY REQUIREMENTS

Each apprenticeship will have its own specific entry requirements; you can find out more on our website.

PROGRESSION

An apprenticeship is a great pathway to a rewarding and successful career, or can be a stepping stone to a higher level programme.

You can find out more about our apprenticeships at petroc.ac.uk/apprenticeships



FOUNDATION LEARNING



*discover
more!*

FIND OUT MORE ONLINE
petroc.ac.uk

"Since E started at Petroc, his confidence has increased hugely from minimal participation and avoiding external activities to showing himself to be a positive leader within the course.

He embraces all activities and challenges whilst also encouraging others to do so too. He has pushed his boundaries and come so far within such a short space of time."

REBECCA SYMONS, LECTURER

WHAT CAN I EXPECT?

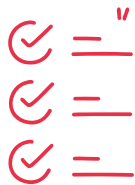
Petroc Foundation Learning programmes are designed for individual learners who are still exploring ideas about their career pathway and may have several options or areas they would like to consider.

Foundation Learning courses are perfect for learners who would benefit from a supportive and positive learning environment. This applies to learners considering their career options or looking to expand and develop their work-place and essential skills.

Throughout your chosen course, our experienced tutors will support and encourage you to develop both your personal and employability skills, building confidence and making choices about the right career or academic pathway for you.

Students are given the opportunity to access and experience a variety of educational visits and group/ community based activities. At the end of your programme, you will attend personalised celebrations marking your achievements.

There are no entry requirements for our Foundation Learning programmes; however, you must be willing and able to learn and engage in a variety of vocational and personal development activities.

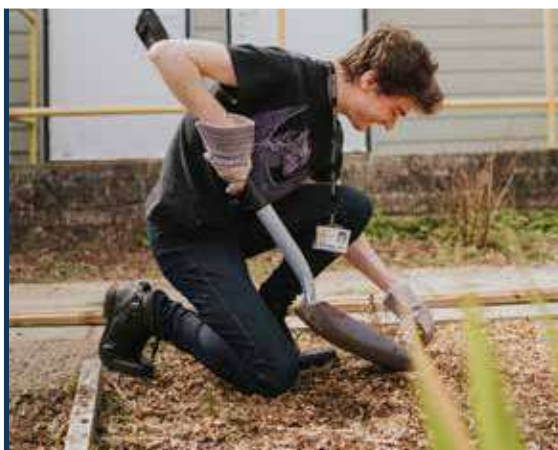


Entry to higher level vocational study



Gain **CONFIDENCE AND SKILLS** to enable progression to employment

The Supported Internship programme has an approximate **70% STUDENT** transition to employment



ENTRY TO CAREER SKILLS

Level 1 | Duration: 1 year

 North Devon | FTB086

This programme is for learners who would like to develop personal, social and employment skills to move into work or further education.

The course offers vocational studies, Maths and English development, and career enhancement. It will help you gain confidence and self-esteem, and decide what your next step in life will be.

During the course, you will undertake the following elements:

- Vocational skills: Gain an introduction to catering, art, public services, human growth and development, UK tourism destinations, and, environmental issues.
- Work experience: Undertake 30 hours of work experience in an area of your choice.
- Residential: Experience a residential trip to build confidence and gain new experiences.

ENTRY REQUIREMENTS

There are no formal entry requirements for this course, just a willingness to learn and embrace challenges.

PROGRESSION

Progression from this course can lead you onto our Career Skills course or another Level 1 course.

CAREER SKILLS

Level 1 | Duration: 1 year

 North Devon | FTB087

This programme will provide you with a range of essential skills to enable you to move into employment. You will gain qualifications in Maths, English and vocational studies, as well as the opportunity to gain a GCSE in Citizenship.

You will study the following Vocational units:

- Creating a website
- Investigating a crime scene
- Carrying out a scientific experiment
- Caring for and feeding animals

You will also be able to undertake work experience for a minimum of 30 hours.

ENTRY REQUIREMENTS

There are no formal entry requirements, however, you will have a one-to-one interview to discuss your personal learning needs.

PROGRESSION

Progression from this course can lead you onto a Level 2 course at Petroc, such as the Academic Progression Programme, an apprenticeship, or employment.

ACADEMIC PROGRESSION PROGRAMME

Level 2 | Duration: 1 year

 North Devon | FTB513

This course is designed to prepare you for the various academic routes available to you at Level 3.

The course will give you the opportunity to choose one of two pathways.

Pathway A: GCSEs in English Language, Maths, Psychology, Citizenship and Combined Science.

Pathway B: GCSEs in English Language, Maths, Psychology and Level 2 BTEC in Personal Growth and Wellbeing.

Whichever pathway you choose, you will benefit from a highly supportive tutorial package.

You will also undertake Higher Project Qualification (HPQ). The HPQ will prepare you for independent study and is an opportunity to research a topic, theory or hobby that motivates and interests you.

ENTRY REQUIREMENTS

You must hold three GCSEs at grade 3, preferably including Maths and English, or have progressed from the Career Skills course.

PROGRESSION

Upon successful completion of this course, you can progress on to a Level 3 course including A Levels, T Levels or an apprenticeship.

PROJECT SEARCH (BARNSTAPLE)

Level 1 | Duration: 1 year

 North Devon | FTB244

Project SEARCH is a supported internship for people who want to get a job. It has been specifically created for students with an EHCP who have a learning disability or Autistic Spectrum Condition.

You will work solely at North Devon District Hospital to gain new employability skills with the ultimate goal of getting paid employment when you leave the project. The course runs at the hospital for five days a week and is supported by two full-time Project SEARCH staff as well as onsite mentors.

At the start of the course, you will undertake a three-week settling in period, where you will receive all the training necessary to be safe and professional within the hospital grounds. You will then undertake three 10-week placements in the hospital, where you will be taking on a real role in the hospital.

ENTRY REQUIREMENTS

You will need to have an EHCP and be under 24 years of age. You will have a one-to-one interview to discuss your personal learning needs.

PROGRESSION

Successful completion of this course may provide you with the opportunity to progress to a supported internship course, an apprenticeship or a higher level of study in a vocational area.

PROJECT SEARCH (EXETER)

Level 1 | Duration: 1 year

 Tiverton | FTT305

Project SEARCH is a supported internship for people who want to get a job. It has been specifically created for students with an EHCP who have a learning disability or Autistic Spectrum Condition.

You will work solely at Royal Devon & Exeter Hospital to gain new employability skills with the ultimate goal of getting paid employment when you leave the project. The course runs at the hospital for five days a week and is supported by two full-time Project SEARCH staff as well as onsite mentors.

At the start of the course, you will undertake a three-week settling in period, where you will receive all the training necessary to be safe and professional within the hospital grounds. You will then undertake three 10-week placements in the hospital, where you will be taking on a real role in the hospital.

ENTRY REQUIREMENTS

You will need to have an EHCP and be under 24 years of age. You will have a one-to-one interview to discuss your personal learning needs.

PROGRESSION

Successful completion of this course may provide you with the opportunity to progress to a supported internship course, an apprenticeship or a higher level of study in a vocational area.

SUPPORTED INTERNSHIP

Entry Level | Duration: 1 year

 North Devon | FTB243

 Tiverton | FTT001

Supported Internships are for young people who want to move into employment and need extra support to do so. It is aimed at those with learning difficulties and/or disabilities, aged 16 to 24, with a Statement of Special Educational Needs, a My Plan, a Learning Difficulty Assessment, or an EHCP.

The structured study programme includes the following:

- On-the-job training with a local employer - supported by expert job coaches.
- An employability programme looking at the soft skills of employment.
- Vocational profiling to identify skills and qualities.
- The opportunity to study for relevant qualifications.

ENTRY REQUIREMENTS

There are no formal entry requirements, however, you will have a one-to-one interview to discuss your personal learning needs.

PROGRESSION

Successful completion of this course may provide you with the opportunity to progress to a supported internship course, an apprenticeship or a higher level of study in a vocational area.

HAIR & BEAUTY



discover
more!

FIND OUT MORE ONLINE
petroc.ac.uk



"I am undertaking work experience in a barbershop which has helped me to start building a clientele and a possible placement."

HONOR, BARBERING (FORMER HOLSWORTHY COMMUNITY COLLEGE STUDENT)



WHAT CAN I EXPECT?

Whether you are looking for a career as a make-up artist or aspire to be a salon owner, our hair and beauty programmes will set you on the path to your perfect job.

Travel the world on cruise ships, create award-winning styles for the latest TV drama or develop a successful local business with your own team of staff. Whatever your dream career path is, we can help you to achieve it.

Petroc hair and beauty courses provide the perfect combination of practical and theory-based learning to ensure you develop the skills, experience and confidence to reach your goals in this creative and dynamic industry.

We have state-of-the-art commercial nail and hair salons, barbers and beauty therapy treatment rooms, all located in our modern and welcoming Lifestyle Centre.



63% of people working in the hair and beauty sector are self-employed ¹



The average annual salary for a Makeup Artist is £39,000 ²

¹ PolicyBee

² Talent.com



Future Careers...

The possibilities are endless in this exciting profession:

- Makeup Artist
- Barber
- Hairdresser
- Beauty Therapist
- Nail Technician
- Massage Therapist



BARBERING

Level 2 | Duration: 1 year

📍 North Devon | FTB219

This Technical Certificate in Barbering will allow you to gain valuable experience and meet lots of people in industry, as you work towards a nationally-recognised qualification.

You will study the following modules:

- Health and safety
- Client care and communication
- Client consultation
- Shampoo and conditioning the hair and scalp
- Cutting men's hair
- Colouring and lightening men's hair
- Cutting facial hair
- Styling men's hair
- Competition work
- Work experience in a barber shop

ENTRY REQUIREMENTS

You must hold four GCSEs at grade 3 or above, preferably including Maths and English.

PROGRESSION

Upon successful completion of this course, you can progress onto a Level 3 course or an apprenticeship.

BEAUTY

Level 2 | Duration: 1 year

📍 North Devon | FTB464

This T Level Foundation Year Programme has been developed to help you gain the knowledge, skills and work experience needed to help you progress onto your chosen T Level.

You will gain the following:

- Technical knowledge and practical skills
- Industry-based work experience
- Relevant English, maths and digital skills
- Focused individual support and personal development

The course encompasses the Technical Certificate in Beauty.

You will study the following modules:

- Anatomy and physiology
- Principles of practice for beauty therapists
- Hair removal treatments
- Facial and skin analysis
- Manicure treatments
- Pedicure treatments
- Light cured gel polish
- Lash and brow treatments
- Apply make-up services

ENTRY REQUIREMENTS

You must hold four GCSEs at grade 3 or above, preferably including GCSE Maths and English.

PROGRESSION

After completing this qualification, you can progress on to our Hairdressing, Barbering & Beauty T Level.

HAIR

Level 2 | Duration: 1 year

📍 North Devon | FTB466

This T Level Foundation Year Programme has been developed to help you gain the knowledge, skills and work experience needed to help you progress onto your chosen T Level.

You will gain the following:

- Technical knowledge and practical skills
- Industry-based work experience
- Relevant English, maths and digital skills
- Focused individual support and personal development

The course encompasses the Technical Certificate in Cutting and Styling.

You will study the following modules:

- Shampoo, condition and treatment of the hair and scalp
- Style, set and dress hair
- Cut hair using basic techniques
- Colour and lighten hair

ENTRY REQUIREMENTS

You must hold four GCSEs at grade 3 or above, preferably including GCSE Maths and English.

PROGRESSION

After completing this qualification, you can progress to our Hairdressing, Barbering and Beauty T Level or an apprenticeship.

BEAUTY & SPA THERAPY

Level 3 | Duration: 1 year

📍 North Devon | **FTB210**

This qualification will enable you to further your skills and increase your employment prospects by developing the range of treatments you are able to offer.

During the course, you will study the following units:

- Electrotherapy
- Spa treatments
- Body massage
- Hot stone massage
- The anatomy and physiology of the body
- Client care
- Health and safety
- Client communication
- Selling and promoting of services and products

ENTRY REQUIREMENTS

You must hold four GCSEs at grade 4 or above, including Maths and English. you must have also completed a Level 2 in Beauty Therapy.

PROGRESSION

On successful completion of this course, you could continue your studies, or move into employment in a salon, spa, cruise ship, teaching, or open your own business.

HAIRDRESSING, BARBERING & BEAUTY T LEVEL

Level 3 | Duration: 2 years

📍 North Devon | **FTB551**

T Levels ensure you meet the needs of industry by combining classroom theory, practical learning and industry placement.

This qualification will prepare you for the professional world of hair and beauty with work experience built in as a crucial part of your training.

You will study the following core units:

- Business context
- Regulatory environment
- Safe working practices
- The client journey
- Client consultation
- Sales and marketing
- Business practices
- Self-development

You will chose an occupational specialism of hair, beauty or barbering as part of your T Level.

ENTRY REQUIREMENTS

You must hold at least five GCSEs at grade 4 or above, including GCSE Maths and English.

PROGRESSION

Successful completion of this qualification will allow you to progress onto further study, into an apprenticeship or directly into employment working in the hair and beauty industry.

HAIR & BEAUTY APPRENTICESHIPS

We offer Hair Apprenticeships at Level 2 and Level 3.

An apprenticeship blends classroom learning with on-the-job training, meaning you can earn while you learn. You will usually spend four days in the workplace as a paid employee, with one day in the classroom where you will reinforce and further develop your skills and workplace learnings.

During your apprenticeship, you will be expected to undertake a range of predefined knowledge, skills and behaviours which will relate to your chosen programme.

Depending on the level, an apprenticeship lasts between one and two years and can start at various points in the year.

ENTRY REQUIREMENTS

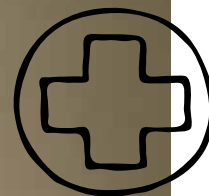
Each apprenticeship will have its own specific entry requirements; you can find out more on our website.

PROGRESSION

An apprenticeship is a great pathway to a rewarding and successful career, or can be a stepping stone to a higher level programme.

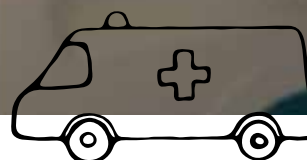
You can find out more about our apprenticeships at petroc.ac.uk/apprenticeships

HEALTH & SOCIAL CARE



*discover
more!*

FIND OUT MORE ONLINE
petroc.ac.uk





"My work experience made me realise that I definitely want to work in healthcare and has pushed me more towards my career goal of being a paramedic."

ELLIE, HEALTH & SOCIAL CARE (FORMER PARK COMMUNITY SCHOOL STUDENT)



WHAT CAN I EXPECT?

Are you looking to give back to your community and find a role that could change someone's life?

A career in health and social care is one of the most rewarding, valuable and in-demand professions. As a sector, health and social care is one of the largest in the country and covers a huge range of roles in a wide variety of settings with jobs ranging from midwifery to speech and language therapy.

Our health and social care programmes deliver the vital skills needed to work in this sector and prepare you to step into roles that really make a positive difference.

Alongside your essential knowledge base, you'll develop teamwork, communication and research skills, helping you to liaise and work effectively with individuals, clients, parents/guardians and other care professionals.

Work experience placements are crucial in the health & social care sector and offer vital real-life learning opportunities to refine your abilities. You'll have the chance to experience working in settings including SEN (Special Educational Needs) schools, hospitals, hospices and nursing homes, looking at all aspects of health and social care work and exploring what works for you.

Our team of dedicated teachers, with years of professional experience, will support you throughout your learning and during your placements.

On completing your course, you may wish to step straight into a job, or you may decide to develop your skills on one of our degree-level programmes.

Results on all of our health & social care courses are excellent, with the vast majority of learners who apply for a healthcare related degree being offered a place at university.



The government is investing **£500 MILLION** into workforce development of the adult social care sector ¹



The average annual salary for an Occupational Therapist is **£35,996** ²

¹ Nuffield Trust ² NHS



Future Careers...

Preparing you for roles that make a positive difference:

- Counsellor
- Care Manager
- Cognitive Behavioural Therapist
- Social Worker
- Youth Worker
- Community Development Worker



HEALTH, CHILDCARE AND EDUCATION

Level 1 | Duration: 1 year

 North Devon | **FTB495**

This introductory programme combines classroom theory and practical learning to provide a taster in a range of subject areas. You will learn the core knowledge that underpins each industry and develop occupationally-specific skills that will allow you to progress onto a higher level of study within your chosen specialism.

The course encompasses qualifications in Health & Social Care and Caring for Children.

You will study the following modules:

- Health and safety with young children
- Growth and development of young children
- Communication in Health & Social Care
- Principles and values in Health & Social Care

ENTRY REQUIREMENTS

You must hold four GCSEs at grade 2 or above, including Maths and English.

PROGRESSION

Upon successful completion of this course, you can progress onto one of our T Level Foundation Year courses in Education and Childcare or Health and Social Care.

HEALTH

Level 2 | Duration: 1 year

 North Devon | **FTB395**

This T Level Foundation Year Programme has been developed to help you gain the knowledge, skills and work experience needed to help you progress onto your chosen T Level.

You will gain the following:

- Technical knowledge and practical skills
- Industry-based work experience
- Relevant English, maths and digital skills
- Focused individual support and personal development

You will study the following modules:

- Biology GCSE
- Human lifespan development
- Dignity and safeguarding vulnerable adults
- A personal development project to support the development of skills and knowledge

You will be expected to undertake a minimum of one week's work experience.

ENTRY REQUIREMENTS

You must hold four GCSEs at grade 3 or above, including Maths. You must have a grade 4 in English Language.

PROGRESSION

Upon successful completion of this programme, you will be able to progress onto our T Level in Health or our Level 3 Health & Social Care course.

HEALTH & SOCIAL CARE

Level 2 | Duration: 1 year

 North Devon | **FTB079**

 Tiverton | **FTT290**

This health and social care study programme is designed to give you a thorough introduction to working in the different health and social care settings, including children, vulnerable adults and older adults.

You will be taught the theory needed to understand how to meet the needs of different service users.

You will study the following modules:

- Communication: Forms and contexts of communication. How communication develops positive relationships with service users and colleagues.
- Equality, diversity and inclusion: How to treat service users fairly and in ways which are empowering.
- Human lifespan development: Looking at how individuals develop from birth to old age. Learning about physical, cognitive, emotional and social needs.
- Safeguarding and protection: How to keep service users safe from harm and abuse.

ENTRY REQUIREMENTS

You must hold four GCSEs at grade 3 or above, preferably including Maths and English.

PROGRESSION

On successful completion, you could apply for our Level 3 Health and Social Care Programme, or an apprenticeship.

HEALTH & SOCIAL CARE

Level 3 | Duration: 2 years

📍 North Devon | **FTB487**

📍 Tiverton | **FTT292**

The Health & Social Care industry is one of the largest employers nationally and the ever-changing field of employment requires dedication and committed staff.

This programme will give you a valuable qualification in supporting the varying needs of people of all ages.

You will study the following modules:

- Human lifespan development
- Working in health and social care
- Meeting individual care and support needs
- Principles of safe practice
- Psychological perspectives
- Physiological disorders and their care
- Anatomy and physiology
- Work experience in health and social care
- Supporting Individuals with additional needs
- Caring for individuals with dementia
- Assessing children's development support needs

ENTRY REQUIREMENTS

You must hold at least five GCSEs at grade 4 or above, including Maths and English Language.

PROGRESSION

Upon successful completion of this course, you could undertake a degree (e.g. nursing, physiotherapy, social work or teaching), an apprenticeship, or a key worker role in health or social care.

HEALTH T LEVEL

Level 3 | Duration: 2 years

📍 North Devon | **FTB369**

T Levels ensure you meet the needs of industry by combining classroom theory, practical learning and industry placement.

The Health T Level is designed to give you both the theory and knowledge of excellent health care practice as well as well-developed practical skills. The expectation is that you will go on to work in roles such as nursing and midwifery.

You will study the following core units:

- Working in health and science
- Managing information and data in the sector
- Infection prevention and control
- Health and wellbeing
- Good scientific and clinical practice

You will study Adult Nursing as your occupational specialism in year two.

You will also undertake work placement of a minimum of 315 hours.

ENTRY REQUIREMENTS

You must hold at least five GCSEs at grade 4 or above. This must include grade 5 in Science and English Language.

PROGRESSION

Successful completion of this qualification will open up a huge range of careers in the health and care sector.

HEALTH & SOCIAL CARE APPRENTICESHIPS

We offer a wide range of apprenticeships relating to health and social care, from Level 2 up to Level 5.

An apprenticeship blends classroom learning with on-the-job training, meaning you can earn while you learn. You will usually spend four days in the workplace as a paid employee, with one day in the classroom where you will reinforce and further develop your skills and workplace learnings.

During your apprenticeship, you will be expected to undertake a range of predefined knowledge, skills and behaviours which will relate to your programme.

Depending on the level, an apprenticeship lasts between one and two years and can start at various points in the year.

ENTRY REQUIREMENTS

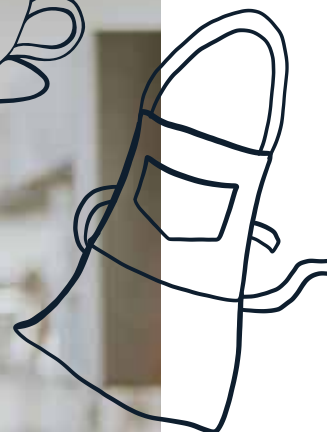
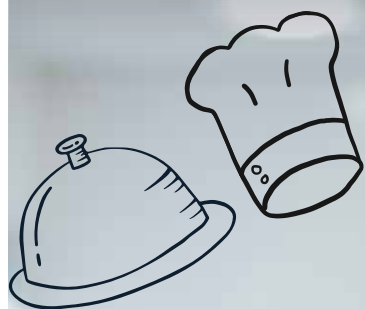
Each apprenticeship will have its own specific entry requirements; you can find out more on our website.

PROGRESSION

An apprenticeship is a great pathway to a rewarding and successful career, or can be a stepping stone to a higher level programme.

You can find out more about our apprenticeships at petroc.ac.uk/apprenticeships

HOSPITALITY & CATERING



*discover
more!*

FIND OUT MORE ONLINE
petroc.ac.uk



"My advice for anyone thinking of taking this course is to just go for it, it's a load of fun and you're learning a lot at the same time. Plus you get to eat the food you cook! "

JADE, COMMIS CHEF APPRENTICESHIP (FORMER BUDEHAVEN COMMUNITY SCHOOL STUDENT)

WHAT CAN I EXPECT?

Hospitality and catering is a vibrant, evolving and multi-billion pound industry where you can immerse yourself in an incredible array of roles from chef to mixologist to patissier and baker.

At Petroc, we'll feed your abilities and motivation and help you gain the skills and experience to take you anywhere in this exciting and fast-paced sector.

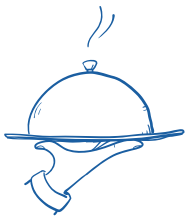
As one of the largest industries in the South West, a hospitality & catering qualification will allow you to step straight into a variety of exciting jobs. You'll be able to develop an interesting and engaging career that has the potential to take you across the globe.

If you have a passion for creating great food and delivering high-quality customer service, hospitality & catering could be the perfect choice for you.

You will train in our modern, commercial training kitchens and stylish restaurant which is open to the public. Giving you valuable real-world learning opportunities alongside teaching from expert lecturers who will share their wealth of knowledge with you. Work experience placements will be an essential part of your development and allow you to make valuable contacts in the industry.

Many of our students enter local and national competitions and we're proud that several of our students have secured employment at top Michelin-starred restaurants.

Whether you see yourself as part of a busy catering team or have aspirations to become a head chef, hotel or event manager either at home or abroad, we can help you go further.



Across the world, a total of **2,246** hotels opened in 2021¹



The average salary for a Chef is **£25,907**²

¹ Statistica

² Talent.com



Future Careers...

Your career could take you anywhere in this exciting and fast-paced sector:

- Catering Manager
- Chef
- Hotel Manager
- Restaurant Manager
- Commis Chef
- Baker



PROFESSIONAL CATERING

Level 2 | Duration: 1 year

📍 North Devon | **FTB483**

This course has been developed as the first step to entering an exciting and dynamic industry, where you will gain essential knowledge, skills and experience that employers look for in future employees.

The course encompasses the Technical Certificate in Professional Cookery, Award in Food Safety in Catering, and Award in Professional Food and Beverage.

You will learn the following techniques:

- Boiling, poaching and steaming
- Stewing and braising
- Baking, roasting and grilling
- Deep frying and shallow frying
- Cold food preparation
- How to use knives, tools and equipment
- Working safely and hygienically

ENTRY REQUIREMENTS

You must hold four GCSEs at grade 3 or above, preferably including Maths and English.

PROGRESSION

After completing this qualification, you can progress on to a Level 3 course or an apprenticeship.

PROFESSIONAL COOKERY

Level 3 | Duration: 1 year

📍 North Devon | **FTB084**

This programme is ideal for anyone wishing to advance their skills and knowledge in the catering and hospitality Industry.

This fast-paced and full programme will cover the following subject areas:

- Complex meat dishes
- Poultry and game
- Fish and shellfish
- Complex vegetable dishes
- Complex sauces and soups
- Patisserie and confectionery
- Hospitality supervision techniques
- Wine and food appreciation
- Table theatre
- Mixology and barista skills

As well as culinary skills, you'll also learn important theory too, such as health and safety, finance and legal requirements, supervisory skills, food costing and sourcing produce.

ENTRY REQUIREMENTS

You must have successfully completed a Level 2 in Hospitality and Catering or another equivalent qualification.

PROGRESSION

This course can lead to full-time employment in a restaurant, hotel, event or kitchen position, at home or abroad. Alternatively, you can progress onto university.

HOSPITALITY & CATERING APPRENTICESHIPS

We offer a Commis Chef Apprenticeship and a Hospitality Team Member Apprenticeship at Level 2.

An apprenticeship blends classroom learning with on-the-job training, meaning you can earn while you learn. You will usually spend four days in the workplace as a paid employee, with one day in the classroom where you will reinforce and further develop your skills and workplace learnings.

During your apprenticeship, you will be expected to undertake a range of predefined knowledge, skills and behaviours which will relate to your chosen programme.

Depending on the level, an apprenticeship lasts between one and two years and can start at various points in the year.

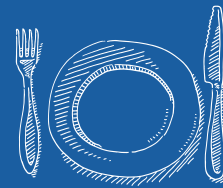
ENTRY REQUIREMENTS

Each apprenticeship will have its own specific entry requirements; you can find out more on our website.

PROGRESSION

An apprenticeship is a great pathway to a rewarding and successful career, or can be a stepping stone to a higher level programme.

You can find out more about our apprenticeships at petroc.ac.uk/apprenticeships



There are **42,477** restaurants within the UK.¹



Student Spotlight...

Last year, our Hospitality & Catering learners cooked and served canapés and drinks for the launch of the Children's Hospice South West Bear Hunt.



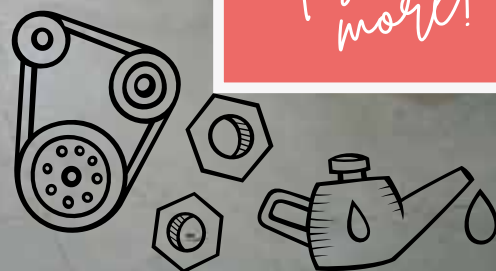
¹ Ibis World

MOTOR VEHICLE



*discover
more!*

FIND OUT MORE ONLINE
petroc.ac.uk





"I chose to come to Petroc for its proximity, and it offered the exact course I wanted to do, with minimal travel time."

**RILEY, MOTOR VEHICLE SERVICE AND MAINTENANCE TECHNICIAN
APPRENTICESHIP (FORMER BIDEFORD COLLEGE STUDENT)**



WHAT CAN I EXPECT?

A great mechanic will always be in demand, so if you love cars and everything engine related, one of our motor vehicle courses could be the perfect choice for you.

Whether you can already take a van apart and put it back together or simply have a passion for cars and just want to get started, our excellent training will give you everything you need to join an established business or start your own enterprise.

Our dedicated and fully-equipped training area replicates a modern vehicle repair centre with all the lifts, kit and tech you would find in a commercial garage. Our knowledgeable and experienced lecturers will help you develop your skills in everything from car maintenance to hybrid vehicle fault diagnosis.

Work experience placements will allow you to refine your knowledge in a real-world setting, honing your customer and client-facing abilities and getting to grips with what it takes to succeed in the motor sector.

You may want to open your own garage, work with an established car manufacturer or even move into the fast-paced world of motor sports or electric car design and development.

Whatever your career goals and ambitions, we can set you on the right track to achieving them.



At the end of 2022, there were **40.7** million licensed vehicles in the UK¹



The average salary for a Motor Vehicle Technician is **£28,596**²

¹ RAC ² Talent.com



Future Careers...

Setting you on the right track to achieving your career goals and ambitions:

- Car Sales Manager
- Mechanic
- Tyre Technician
- Vehicle Inspector
- Auto Body Repair Technician



TRANSPORT & ENGINEERING

Level 1 | Duration: 1 year

 North Devon | FTB493

This introductory programme combines classroom theory and practical learning.

You will learn core knowledge and specific skills that underpins transport and engineering that will allow you to progress onto a higher level of study within your chosen area.

You will undertake an assortment of study components including core and specialist modules, a tutorial programme, and the opportunity to improve your GCSE maths and English. The course will also support you in developing your study skills.

You will study the following modules:

- Introduction to light vehicle maintenance and repair
- Introduction to a range of engineering techniques
- Introduction to a range of welding techniques

ENTRY REQUIREMENTS

You must hold four GCSEs at grade 2 or above, including Maths and English.

PROGRESSION

Upon successful completion of this course, you can progress onto the Diploma in Light Vehicle Maintenance and Repair, Transition to T Level in Engineering and Manufacturing or an apprenticeship.

LIGHT VEHICLE MAINTENANCE & REPAIR

Level 2 | Duration: 1 year

 North Devon | FTB113

This Diploma in Light Vehicle Maintenance & Repair is designed to widen and improve your opportunities for a career in the motor vehicle industry.

You will develop your manual skills and your knowledge and understanding of light vehicle maintenance and repair including engine mechanics, fuel and ignition systems, chassis systems and electrical systems.

You will study the following modules:

- Health and safety
- Materials, fabrication, tools and measuring devices
- Routine light vehicle maintenance
- Mechanical, lubrication and cooling system units and components
- Fuel, ignition, air and exhaust system units and components
- Removing and replacing electrical units and components
- Removing and replacing chassis units
- Removing and replacing transmission and driveline units

ENTRY REQUIREMENTS

You must hold four GCSEs at grade 3 or above, including Maths and English.

PROGRESSION

Upon successful completion of this course, you can progress onto a Level 3 apprenticeship in the motor industry.

MOTOR VEHICLE APPRENTICESHIPS

We offer a Level 3 Motor Vehicle Service & Maintenance Technician Apprenticeship.

An apprenticeship blends classroom learning with on-the-job training, meaning you can earn while you learn. You will usually spend four days in the workplace as a paid employee, with one day in the classroom where you will reinforce and further develop your skills and workplace learnings.

During your apprenticeship, you will be expected to undertake a range of predefined knowledge, skills and behaviours which will relate to your chosen programme.

Depending on the level, an apprenticeship lasts between one and two years and can start at various points in the year.

ENTRY REQUIREMENTS

Each apprenticeship will have its own specific entry requirements; you can find out more on our website.

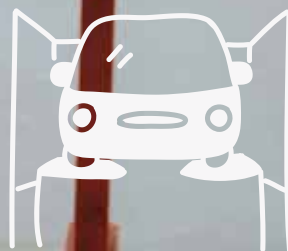
PROGRESSION

An apprenticeship is a great pathway to a rewarding and successful career, or can be a stepping stone to a higher level programme.

You can find out more about our apprenticeships at petroc.ac.uk/apprenticeships



FIND OUT MORE ONLINE
petroc.ac.uk



PREPARING FOR ADULTHOOD



discover
more!

FIND OUT MORE ONLINE
petroc.ac.uk



"Aiden joined our Project Life course having already acquired and developed many skills during his Preparation for Adulthood and Skills for Life courses. Despite his physical challenges, Aiden strives to do well in all he does. He is very capable in the cafe, preparing, cooking and serving dishes, and inspires people around him.

Aiden was nominated, and won, the Tiverton Campus Student Award for his dedication and positivity, and we're delighted that he is planning on continuing his studies on our Supported Internship Programme next year."

ADRIAN BANNER, LECTURER AND TUTOR



WHAT CAN I EXPECT?

At Petroc, we provide learning opportunities that cater to a wide range of needs and abilities. We are here to help broaden your horizons and find ways to create a valuable space for you that is exciting and interesting.

We have an established and highly regarded Special Educational Needs and Disability (SEND) provision and specialist support that assists learners with additional needs in their education goals and career ambitions.

Our experienced team supports learners as they move on from their school environment, by providing safe surroundings and an exciting and challenging curriculum that encourages them to become more independent and confident.

With unique facilities such as our cafés, sensory gardens and spaces for enterprise-driven craft and skill development, we provide places where students can feel comfortable and confident and where their learning and social skills can flourish.

Our Preparing for Adulthood courses facilitate a transition for learners into adulthood, being actively involved in their local community through a journey based on their individual needs and aspirations.

We give our learners the time they need to develop skills and work towards their chosen vocation and to investigate employability options throughout their studies. They will be continually supported and encouraged by our dedicated guidance team.



Gain confidence and skills to enable progression to employment.

Student Spotlight...

Learners from our Preparing for Adulthood courses made, baked and created lots of delightful products to sell at our Supported Learning Christmas Market.

All the profits went back into the community via charitable organisations.



WORKSKILLS@ LIBERTY

Entry Level | Duration: 1 year

📍 North Devon | FTB349

This course is designed to improve the employability skills of learners through working at Petroc's Liberty Centre. The course supports those who aspire to go into employment but are not quite ready to enrol on an Internship.

The course includes a work placement for two days a week in the Liberty Centre Cafe where you will gain experience and confidence in customer service, catering, handling money, budgeting and working in a team. You will also have the added responsibility of marketing the cafe.

One day a week, you will undertake tutorials, Maths and English, and employability skills..

ENTRY REQUIREMENTS

There are no formal entry requirements, however, you will have a one-to-one interview to discuss your personal learning needs.

PROGRESSION

Successful completion of this course may provide you with the opportunity to progress to a supported internship course.

FOUNDATION YEAR

Level 1 | Duration: 1 year

📍 North Devon | FTB300A

📍 Tiverton | FTT307

This is a tailored programme designed to meet the educational and support needs of Pre-Entry and Entry Level learners.

It covers the four outcomes that young people with disabilities have said are important to them: Employment, Independent Living, Community Inclusion and Good Health.

The course will include the following elements:

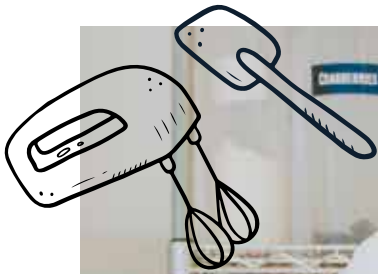
- Nurturing the personal and day-to-day skills
- Developing the relevant skills needed for employment.
- Work experience opportunities
- Opportunities to integrate with mainstream students
- Enrichment activities
- Educational visits and a residential trip

ENTRY REQUIREMENTS

There are no formal entry requirements, however, you will have a one-to-one interview to discuss your personal learning needs.

PROGRESSION

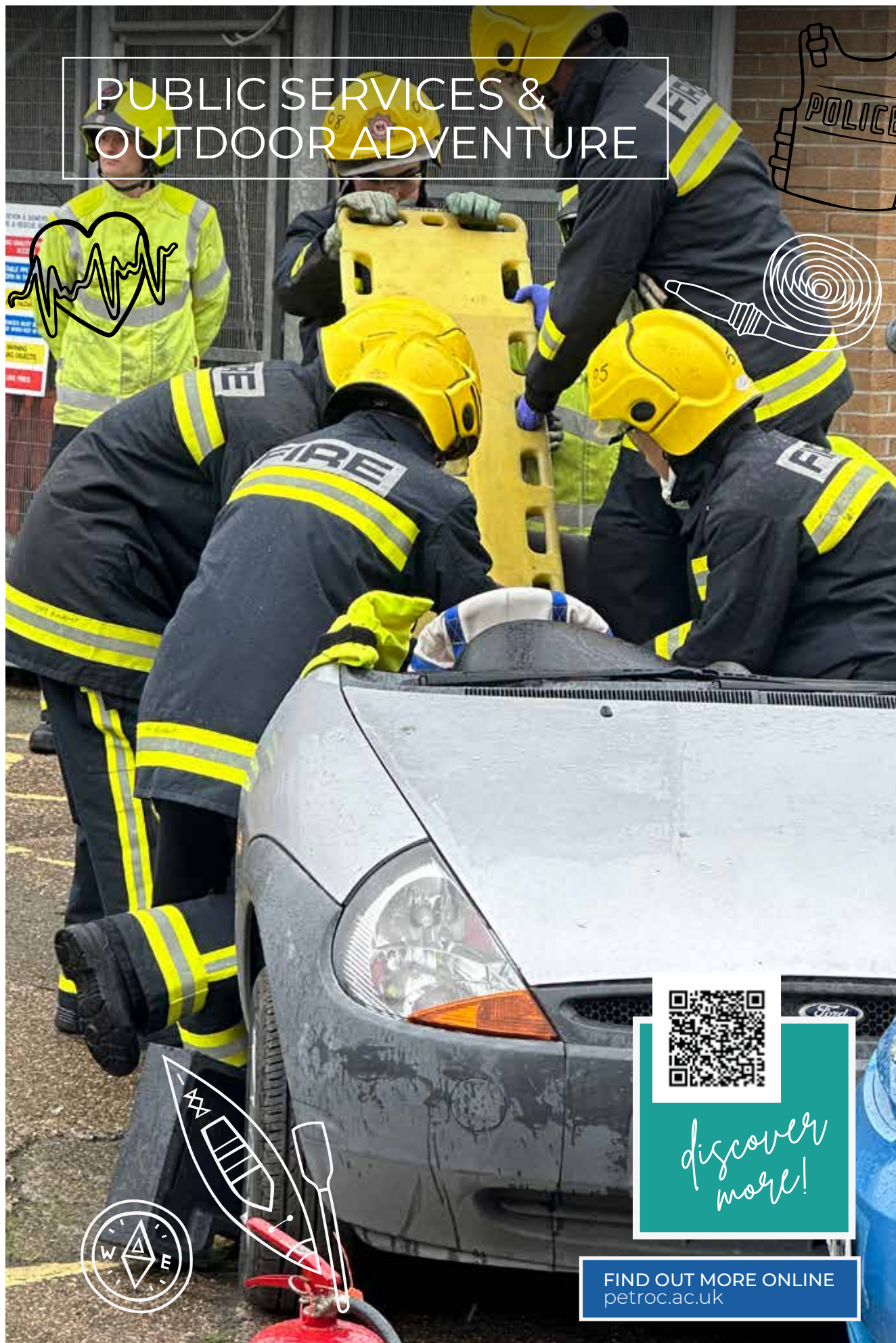
Upon completion of this course, you will be able to progress towards further education, employment, independent living and participation in the community.



FIND OUT MORE ONLINE
petroc.ac.uk



PUBLIC SERVICES & OUTDOOR ADVENTURE



discover
more!

FIND OUT MORE ONLINE
petroc.ac.uk



"I knew that I wanted to join an emergency service, I was just not sure on which one - this course gave me insight into all of them."

JADE, UNIFORMED PROTECTIVE SERVICES (FORMER BIDEFORD COLLEGE STUDENT)



WHAT CAN I EXPECT?

Police officer, coastguard, firefighter or water sports coach. If any of these demanding, high-octane roles are your dream job then we can help you achieve your ambitions.

At Petroc, we have created a series of courses that allow learners to take the first crucial steps towards a career in public services or outdoor adventure.

All of these courses are exciting and challenging and are a perfect platform for you to further explore your passions, develop your hobbies or refine your public service skills.

If you enjoy supporting and working with others, have a keen interest in working outdoors, or want to look at training as a first responder or moving towards a career in uniform, we can support you in your learning.

We have a team of passionate and inspirational lecturers who can provide you with hands-on experience, alongside the supporting theoretical knowledge you need to achieve your qualification.

We make use of North Devon's beautiful coastline and natural environments as innovative teaching spaces where you will have the opportunity to enhance your practical learning alongside essential teamwork and leadership training.

You may also wish to join our 999 Academy, where you can engage in social action projects, gain an insight into the emergency services and develop your personal, professional and employability skills.

Students who study on these courses progress onto a wide variety of different careers in many diverse work settings.



In 2022, there were approximately **164,000** police officers in the UK¹



The average salary for an Army Officer is **£51,551**²

¹ Statistica

² Glassdoor.com



Future Careers...

Setting you on a path to your perfect job in many diverse settings:

- Police Officer
- Army Officer
- Bodyguard
- Firefighter
- Paramedic
- Coastguard



PUBLIC SERVICES, ANIMAL CARE & SPORT

Level 1 | Duration: 1 year

 North Devon | FTB496

This introductory programme combines classroom theory and practical learning to provide a taster in a range of subject areas. You will learn core knowledge and specific skills that underpin each of these specialisms that will allow you to progress onto a higher level of study within your chosen area.

You will undertake an assortment of study components including core and specialist modules, a tutorial programme, and the opportunity to improve your GCSE maths and English. The course will also support you in developing your study skills.

You will study the following modules:

- Finding out about the public services
- Keeping active and healthy
- Maintaining the health and wellbeing of animals
- Developing a personal progression plan

ENTRY REQUIREMENTS

You must hold four GCSEs at grade 2 or above, preferably including Maths and English.

PROGRESSION

Upon successful completion of this course, you can progress onto the Level 2 Diploma in Preparation for Public Services, First Diploma in Sport or T Level Foundation Year in Animal Care.

PREPARATION FOR PUBLIC SERVICES

Level 2 | Duration: 1 year

 North Devon | FTB488

This Diploma in Preparation for Public Services covers a wide range of topics to prepare you for a future in the public service sector (police, fire, paramedic and armed forces), and help you with your career options.

You will study the following modules:

- Public service skills and support for the community
- Employment in uniformed public services
- Health and fitness for entry into the uniformed public services
- Activities and teamwork for the public services
- Sport and recreation in the public services
- Expedition and land navigation skills
- Crime and its effects on society
- Attending emergency incidents in the public services

ENTRY REQUIREMENTS

You must hold four GCSEs at grade 3 or above, including Maths and English.

PROGRESSION

Upon successful completion of this course, you will be able to progress on to the Level 3 Extended Diploma in Uniformed Protective Services or Level 3 Sport & Outdoor Activities.

SPORT AND OUTDOOR ACTIVITIES

Level 3 | Duration: 2 years

 North Devon | FTB500

This programme blends classroom-based theory with practical activities. You'll get to experience outdoor rock climbing, kayaking, canoeing, mounting biking, navigating, coasteering, gorge walking and anything else we can cram in!

You will study the following modules:

- Health, wellbeing and sport
- Personal skills development
- Leadership and instructing
- Research project in sport
- Self-employment
- Sporting injuries
- Technology in sport and physical activity
- Organising events
- Sports tourism
- Health and safety factors
- Outdoor activity provision
- Impacts and sustainability of outdoor activities
- Expedition experience

You must be happy to get cold, wet and muddy, and accept and manage the risks involved in what are potentially dangerous activities.

ENTRY REQUIREMENTS

You must hold at least five GCSEs at grade 4 or above, including Maths and English Language. You will also need to be comfortable with heights and being in cold water.

PROGRESSION

After completing this qualification you could undertake a degree-level course (e.g. in sport, geography, environmental science) or move into employment in the UK or abroad.

UNIFORMED PROTECTIVE SERVICES

Level 3 | Duration: 2 years

📍 North Devon | FTB099

Studying this programme will lead to a qualification with real value and great potential.

You will study the following modules

- Citizenship and diversity
- Behaviour and discipline
- Global affairs and the media
- Physical preparation, health and wellbeing
- Teamwork, leadership and communication
- Government and the protective services
- Planning for and responding to emergency incidents
- Sociological perspectives
- Skills for outdoor activities
- Introduction to criminology

You will also have the opportunity to improve fitness levels and develop independent thinking, critical analysis, research skills and teamwork skills.

Practical elements include physical fitness, sport and outdoor adventure.

ENTRY REQUIREMENTS

You must hold at least five GCSEs at grade 4 or above, including Maths and English.

PROGRESSION

Upon completion of this programme, you could go on to university to further develop your knowledge in a specific area, or move into employment.



Student Spotlight...

Outdoor Adventure students embarked on an exciting journey to the beautiful town of Avoriaz, in the French Alps. Over the course of their stay, students developed their skiing skills, immersed themselves in the local culture and made fabulous memories!



SCIENCE

SOUTH WEST

INSTITUTE OF
TECHNOLOGY



FIND OUT MORE ONLINE
petroc.ac.uk



discover
more!





"I really enjoy my course. It pushes me to do my absolute best no matter what. The lecturers are extremely helpful as they take time and care into helping you understand everything in the course in detail."

JULIA, FORENSIC & CRIMINAL INVESTIGATION



WHAT CAN I EXPECT?

Calling all future crime scene investigators, microbiologists, astrophysicists, experimental chemists and lab technicians!

At Petroc, our Science courses offer an excellent foundation for exciting science-based careers in a huge number of industries, so come and explore your passion for practical science with us.

By studying on one of our programmes, you will gain the knowledge base and skills needed to succeed in a range of professions as well as an interesting and immersive learning experience on a beautiful campus with excellent facilities.

Future career options in science include laboratory technician, criminal investigator or healthcare science technician among many others.

You will build on the knowledge gained from your GCSE Chemistry, Biology, Physics and Maths and explore how that knowledge can be used in the workplace.

As well as studying the sciences specific to your course, you'll have the chance to take on fascinating work experience to support your future career ambitions.

You will also get the opportunity to join our STEM Academy to gain further experience and skill development to add to your CV and professional profile.



According to a survey conducted in 28 countries, scientists are among the world's **MOST TRUSTED** professions¹



The average salary for a Physicist is **£42,500**²

¹ Statista

² Payscale.com



Future Careers...

Whatever your aspirations, there are a number of exciting science-based careers available to you:

- Crime Scene Investigator
- Microbiologist
- Analytical Chemist
- Astrophysicist
- Biomedical Scientist
- Pharmacologist
- Laboratory Technician



FORENSIC AND CRIMINAL INVESTIGATION

Level 3 | Duration: 2 years

📍 North Devon | FTB362

As well as learning pure and social sciences, this fascinating course will teach you important transferable skills such as communication, teamwork, research and analysis - which are valued both by employers and universities.

You will study the following modules:

- Principles and applications of science
- Practical scientific procedures and techniques
- Science investigation skills
- Forensic investigations procedures in practice
- Applications of criminology
- Criminal investigation procedures in practice
- Applications of criminal and forensic psychology
- Practical chemical analysis
- Microbiology and Microbiological techniques
- Environmental Forensics
- Physiology of human body systems
- Forensic genetics
- Forensic anthropology and archaeology

ENTRY REQUIREMENTS

You must hold at least five GCSEs at grade 4 or above. This should include Maths and English Language at grade 4, and Double Science at a grade 5/4 or a 5 and a 4 in two separate sciences.

PROGRESSION

Upon completion of this programme, you could go on to university to study, for example, forensic and criminal investigation or policing.

SCIENCE APPRENTICESHIPS

We offer a Level 3 Laboratory Technician Apprenticeship.

An apprenticeship blends classroom learning with on-the-job training, meaning you can earn while you learn. You will usually spend four days in the workplace as a paid employee, with one day in the classroom where you will reinforce and further develop your skills and workplace learnings.

During your apprenticeship, you will be expected to undertake a range of predefined knowledge, skills and behaviours which will relate to your programme.

Depending on the level, an apprenticeship lasts between one and two years and can start at various points in the year.

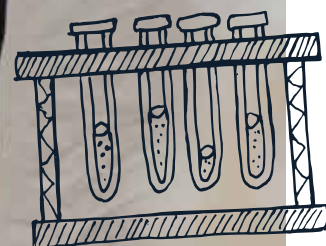
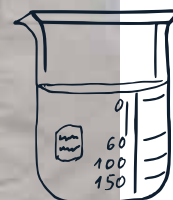
ENTRY REQUIREMENTS

Each apprenticeship will have its own specific entry requirements; you can find out more on our website.

PROGRESSION

An apprenticeship is a great pathway to a rewarding and successful career, or can be a stepping stone to a higher level programme.

You can find out more about our apprenticeships at **petroc.ac.uk/apprenticeships**



SPORT



SLAM
DUNK



discover
more!

FIND OUT MORE ONLINE
petroc.ac.uk





"The lecturers are friendly, patient and make sure every student gets the help and support they need to reach the best grade possible."

HARVEY, SPORT (FORMER PILTON COMMUNITY COLLEGE STUDENT)



WHAT CAN I EXPECT?

Want to be part of the multi-billion pound health and fitness industry? Develop your own brand, find a social media audience focussed on health, create a bespoke training space or open your own spin centre?

If you are highly motivated to develop yourself physically and mentally, one of our sport programmes could be the perfect option for your next career step.

You will learn alongside like-minded individuals, looking to explore career options that optimise holistic health and fitness and take your place in this rapidly growing sector.

With a wealth of opportunities in wearable health tech, gym wear and equipment, fitness and nutrition coaching among many others, this is an industry for innovative and driven individuals.

You may decide that you want to step straight into employment, start your own business or use your knowledge base to move onto a degree in sports science or psychology.



There were estimated to be approximately **110,500** sports coaches working in the UK as of 2022.¹

By studying at Petroc, you will have access to our specialist fitness studios, Technogym-equipped gyms and sports massage therapy suites.

You will gain essential practical experience to support the theoretical elements of the course and have valuable opportunities to work within the local community in settings such as schools, festivals and community events.

Developing your skills and exploring the many facets of this industry, you will be able to identify business and employment opportunities to suit your aspirations, fully supported by our teaching teams.

Alumni from our sport courses have become PE teachers, personal trainers, nutritionists and sports massage therapists and many have secured highly sought after places at some of the country's leading sports universities.



The average salary for a Physiotherapist is **£38,000**²

¹ Statistica

² Talent.com



Future Careers...

The possibilities are endless in this innovative industry:

- Sports Psychologist
- Personal Trainer
- PE Teacher
- Sports Coach
- Gym Manager
- Lifeguard



PUBLIC SERVICES, ANIMAL CARE & SPORT

Level 1 | Duration: 1 year

 North Devon | FTB496

This introductory programme combines classroom theory and practical learning to provide a taster in a range of subject areas. You will learn core knowledge and specific skills that underpin each of these specialisms that will allow you to progress onto a higher level of study within your chosen area.

You will undertake an assortment of study components including core and specialist modules, a tutorial programme, and the opportunity to improve your GCSE maths and English. The course will also support you in developing your study skills.

You will study the following modules:

- Keeping active and healthy
- Finding out about the public services
- Maintaining the health and wellbeing of animals
- Developing a personal progression plan

ENTRY REQUIREMENTS

You must hold four GCSEs at grade 2 or above, preferably including Maths and English.

PROGRESSION

Upon successful completion of this course, you can progress onto the Level 2 First Diploma in Sport, Diploma in Preparation for Public Services or Transition to T Level in Animal Care.

SPORT

Level 2 | Duration: 1 year

 North Devon | FTB485

This First Diploma in Sport is designed for anyone with a passion for sport. It will give you a taste of the skills and experiences you'll need to succeed in a career in sport!

You will study the following modules:

- Fitness for sport
- Anatomy and physiology
- Practical sports performance and analysis
- Leading sports activities
- Injury in sport
- Training for personal fitness

You will also be involved in planning and leading sports activities, instructing exercise to others and contributing to real-life sport experiences. You will also have the opportunity to be involved in the Sport Leader Development Package, gaining real leadership experience in a range of settings such as schools, sports and physical activity festivals and community events.

ENTRY REQUIREMENTS

You must hold four GCSEs at grade 3 or above, preferably including Maths and English.

PROGRESSION

Successful completion of this course can lead to further study in our Level 3 Sport or Level 3 Sport & Outdoor Activity courses.

SPORT

Level 3 | Duration: 2 years

 North Devon | FTB102

This programme covers many aspects of the sports industry and gives an excellent academic sports background to take forward into a related career. The qualification combines theoretical research assignments with practical assessment and includes a wide range of areas related to sport and fitness.

You will study the following modules:

- Anatomy and physiology
- Sports leadership
- Professional development in the industry
- Fitness testing
- Fitness training and programming
- Research methods in sport
- Investigating business
- Development and provision of sport and physical activity
- Skill acquisition
- Practical sport
- Rules, regulations and officiating
- Work experience

You'll also take an active role in a range of sports events in the local community.

ENTRY REQUIREMENTS

You must hold at least five GCSEs at grade 4 or above, including Maths and English Language. You should also have a good understanding of science subjects.

PROGRESSION

After completing this qualification you could undertake a degree-level course (e.g. in sports massage, teaching, sports coaching) or move into direct employment in the sports and leisure industry.

SPORT AND OUTDOOR ACTIVITIES

Level 3 | Duration: 2 years

📍 North Devon | FTB500

This programme blends classroom-based theory with practical activities. You'll get to experience outdoor rock climbing, kayaking, canoeing, mountain biking, navigating plus coasteering, gorge walking and anything else we can cram in!

You will study the following modules:

- Health, wellbeing and sport
- Personal skills development
- Leadership and instructing
- Research project in sport
- Self-employment
- Sporting injuries
- Technology in sport and physical activity
- Organising events
- Sports tourism
- Health and safety factors
- Outdoor activity provision
- Impacts and sustainability of outdoor activities
- Expedition experience

You must be happy to get cold, wet and muddy, and accept and manage the risks involved in what are potentially dangerous activities.

ENTRY REQUIREMENTS

You must hold at least five GCSEs at grade 4 or above, including Maths and English Language. You will also need to be comfortable with heights and being in cold water.

PROGRESSION

After completing this qualification you could undertake a degree-level course (e.g. in sport, geography, environmental science) or move into employment in the UK or abroad.



Student Spotlight...

Our pan-ability football team, The Rocks, won Petroc's Sports Team of the Year 2023. The Rocks won the Regional Championships and represented the South West at the National Championships and we are incredibly proud of their achievements!



STUDENT LIFE

PETROC *plus*

We want you to get the most you can from your individual college experience.

You get out what you put in, and we want you to finish your course with a CV that is bursting with achievements.

In addition to your core curriculum, at enrolment you will be invited to sign up for a range of activities that will enable you to pursue personal interests or support your individual ambitions.

These could be academic, sporting or practical or even a combination depending on your interests and the subject/s you are studying.

All of our opportunities, clubs and super-curricular programmes have been designed to support and complement your learning. They will give you more ways to socialise and find your place as part of our vibrant and exciting community. Making your Petroc experience an enjoyable, enriching and valuable one.

FIND OUT MORE ONLINE
petroc.ac.uk



over 30
different clubs



Join one of our Academies, get involved with a Petroc sports team, take part in one of our clubs or societies or even become a Student Ambassador.

Whatever you choose, at Petroc you'll be able to develop your confidence and knowledge in a safe, enjoyable and supportive environment.



ACADEMIES

discover
more!



Petroc Academies are part of our commitment to help you achieve excellence through learning.

They support the work and activities of specific topic, subject and course areas and give you the opportunity to develop your skills and expand your education.

By joining an Academy you'll be able to explore your passions, add to your CV and professional profile, and start preparing for a wide range of highly-skilled careers and university courses. Below we've outlined a selection of the Academies we currently offer – full details can be found on our website.



CARE ACADEMY (Tiverton campus)

When you join our Care Academy, you'll gain a genuine insight into frontline healthcare work.

Through shadowing and supporting professionals at a local hospital, you will interact with patients and staff in a variety of settings - ranging from theatres to podiatry, and physiotherapy to pharmacy.

You must have a passion and commitment for providing compassionate care and a desire to discover more about what a career in health and social care has to offer.



#1



CHELSEA FC FOUNDATION (CFCF) FOOTBALL ACADEMY

Fulfil your football playing potential! Petroc is proud to be working with Chelsea FC Foundation (CFCF) to offer a football academy to all our students.

The Chelsea FC Foundation (CFCF) Football Academy will give you the opportunity to develop your footballing ability in a professional-style environment, coached by experienced teachers and FA qualified coaches.

You will get the opportunity to play in the national school's league and attend coaching and development events at Chelsea's training ground throughout the year.



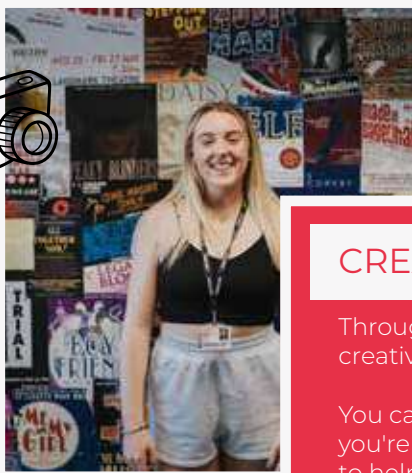
FOUNDATION

CONSTRUCTION ACADEMY (Tiverton campus)

The Construction Academy is an excellent opportunity for you to gain valuable insight into the world of construction.

There will be amazing opportunities to gain hands-on experience in community initiatives, and you'll be encouraged to take part in high-profile competitions and events such as World Skills, HIP and SPARKS.

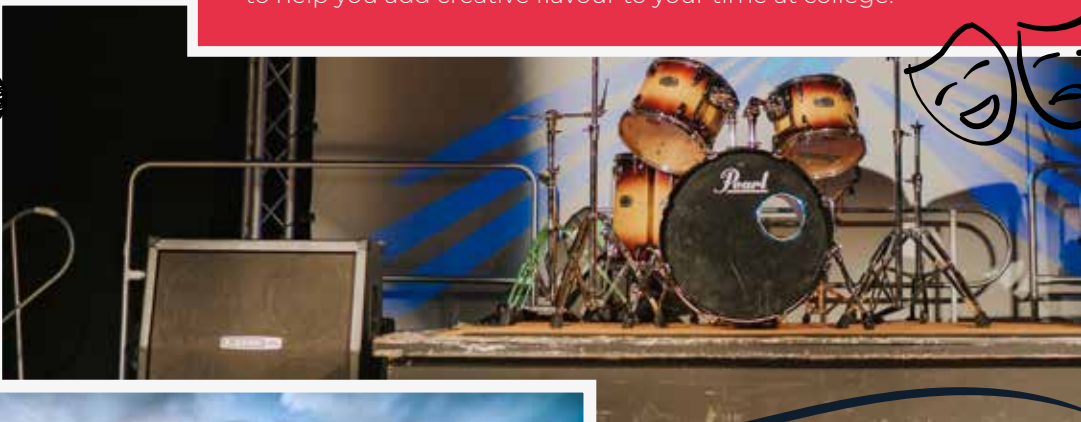
You'll also hear from guest speakers across a variety of construction sectors and learn more about how the green agenda is revolutionising this sector



CREATIVE ACADEMIES

Through our Creative Academies, you can continue to develop your creativity alongside your main course.

You can choose art, acting, contemporary choir, media or film, and whether you're an expert or a novice, we'll provide the space, equipment and support to help you add creative flavour to your time at college.



DUKE OF EDINBURGH

If you love a challenge and want to enhance your skills, build your confidence and support your community, then the Duke of Edinburgh Silver or Gold Award promises to take you on an amazing adventure. Whether you're new to DofE or already have an award under your belt, push yourself further and discover all that you are capable of.



LAW ACADEMY

Being part of the Law Academy will offer you an exciting opportunity to participate in the 'Bar Mock Trial' - a competition involving other schools and colleges where students work together as a team to prosecute and defend cases.

You will also interact with legal professionals and improve your employability skills, as well as develop your critical thinking, creativity and confidence. It's a great option for anyone considering a career in the legal profession.

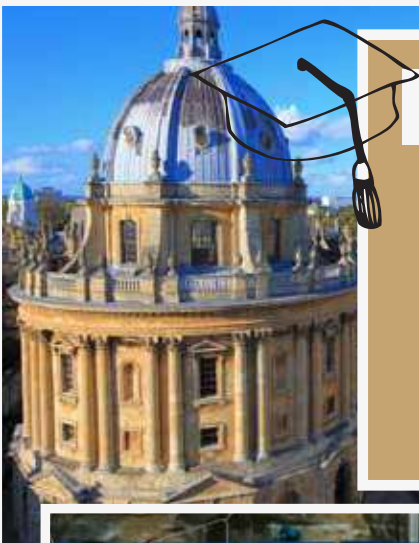


RUSSELL GROUP & OXBRIDGE ACADEMY

The Oxbridge Academy is aimed at students who have applied, or may apply, for either the University of Oxford or the University of Cambridge.

It delivers super-curricular activities like writing competitions, discussions and debates. In addition, it offers expert practical advice to enhance your application and practical experience of interviews in preparation for your next steps.

This high-achieving academy would particularly suit students with a profile of grades 7-9 at GCSE and A/A* in year one of A Levels.



SPORT ACADEMIES

Joining a Petroc Sports Academy will keep you active, allow you to hone your talents and learn about nutrition, sports psychology, health and wellness.

Petroc players and athletes have represented the South West, England and Great Britain in their chosen sports in both league and cup fixtures. We work in partnership with local and national league clubs to support your development and get your talent spotted.

We have enjoyed some fantastic successes in recent years. Our Netball team currently sit in first place, with Basketball in 2nd and Men's Football in 4th in their respective South West leagues.

In the Association of Colleges (AoC) 21/22 season, we had three cross country runners and three badminton players going to the National Championships. Their amazing skills and endurance contributed to the South West contingent winning the Wilkinson Sword Trophy.

Get involved and develop your skills under the expert supervision of our passionate coaches in football, rugby, netball, tennis, basketball, beach volleyball, and many more exciting activities.



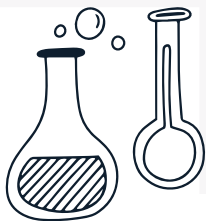


STEM ACADEMY

Our STEM Academy is designed for students with a passion for science, technology, engineering or maths and who want to enhance their understanding of the scientific world.

You will gain valuable experience and skills to add to your CV and hear from guest speakers about their work in the STEM sector.

You will also have the opportunity to take part in events run by The Royal Institution, The Advanced Mathematics Support Programme (AMSP) and the MEI (Mathematics in Education and Industry).

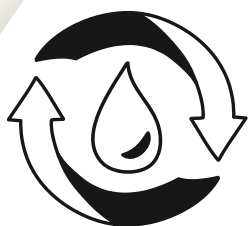


SUSTAINABILITY ACADEMY

At Petroc, sustainability is integral in our approach to learning and living.

When you join the Sustainability Academy, you will examine positive climate actions; critically evaluate sustainable solutions; and, study global issues ranging from equality and poverty, to cities, industries and ecosystems.

You'll also hear from guest speakers from organisations such as Devon Wildlife Trust, Exmoor National Park and Plastic Free North Devon and embark on field trips to stunning locations





SURFING ACADEMY

Whether you're a complete beginner looking to improve your skills, or a competent surfer who wants to undertake the Surfing England Surf Instructor training, this Academy is for you!

Based on our beautiful North Devon beaches with transport, kit and experienced coaches provided, there really is no better way to enhance your student experience.



UNIFORMED SERVICES ACADEMY

The Uniformed Services Academy is ideal for anyone considering a career in the emergency services or armed forces.

Open to all Petroc students, you will gain knowledge in the work of the uniformed services, take part in physical and practical sessions, and engage regularly with serving personnel. We will help prepare you for the entry tests of all services, developing your fitness, interview techniques and skills base.



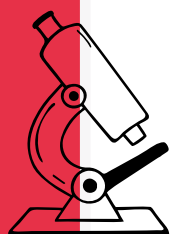
VETMED ACADEMY

The VETMED Academy is designed for students looking at careers in medicine, dentistry, veterinary science and nursing.

You will have the opportunity to experience real-life work placements through Northern Devon Healthcare NHS Trust and Health Education South West.

You'll hear from guest speakers who work in a variety of medical roles who will share their work and career pathways with you.

There will also be opportunities to take part in engaging practical sessions in topics such as dissection to optometry, that go far beyond the normal A Level syllabus.



ENRICHMENT

At Petroc, we want you to have a fantastic student experience and get the most you can from your time at college.

Petroc and the Petroc Student Union (PSU) host an exciting array of activities, groups and clubs to develop and expand your interests, hobbies and social groups.

PETROC *plus*

We pride ourselves on being inclusive and offer an exceptional range of activities and clubs that you can get involved in outside of your studies that will help you meet new people, make new friends, develop your skills and strengthen your CV.

Whether you want to join a social club, fancy becoming a writer for The Vision student newsletter or set your sights on being an ambassador for your peers, we have something for everyone.

"I do both the Film Club and Just Dance. I really like that anyone from different courses can join, so it's a great way of meeting new people." **MADDIE**

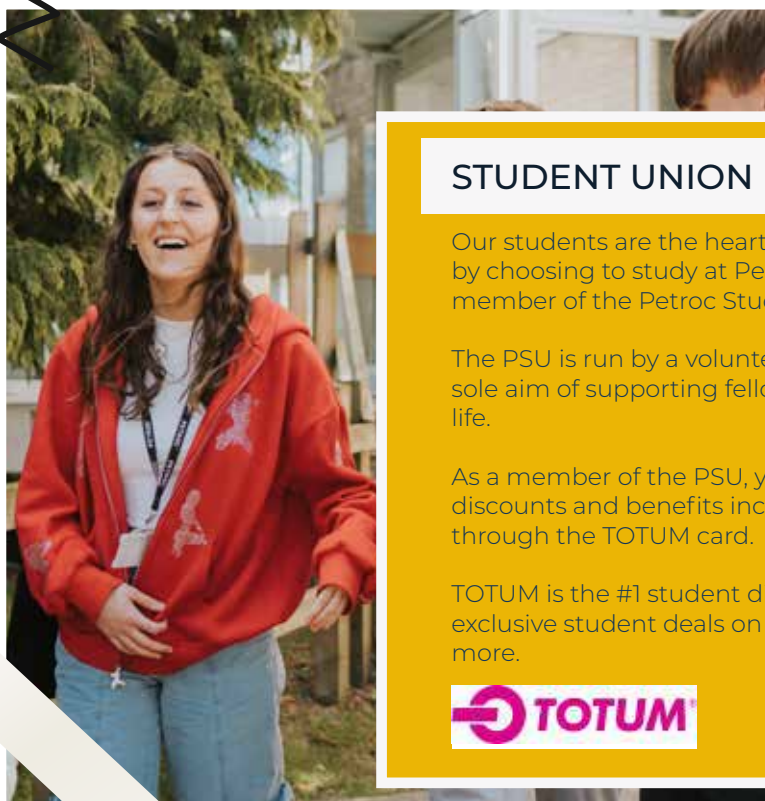
CLUBS & ACTIVITIES

We've got a fantastic array of clubs and activities for you to get involved in including film screenings, book club, LGBT+ group, sports and music clubs, eSports and DoFE. You could even volunteer in our 'Zero Shop' or DJ on our college radio station - Fresh FM!

Take a look on our website for the most up-to-date information about the activities available and how you can get involved.



*discover
more!*



STUDENT UNION

Our students are the heart and focus of everything we do and by choosing to study at Petroc, you will automatically become a member of the Petroc Student Union (PSU).

The PSU is run by a volunteer committee of elected students with the sole aim of supporting fellow learners with the many facets of college life.

As a member of the PSU, you are also entitled to certain student discounts and benefits including, for a small cost, those gained through the TOTUM card.

TOTUM is the #1 student discount card and app, giving you access to exclusive student deals on food and fashion, tech, travel and much more.



STEM AMBASSADORS

We are extremely proud of the quality of our science, technology, engineering and mathematics provision, and anticipate an explosion of STEM careers in our area. At Petroc, we will prepare you for these exciting opportunities by delivering experiences with leading STEM industries in the region.

In addition to our highly regarded STEM Academy and course options, learners can also sign up to become a STEM Ambassador.

A huge benefit for your CV and professional profile, an Ambassador role means volunteering your time to bring STEM subjects to life and demonstrating their value to others.

Being a STEM Ambassador is an excellent opportunity to demonstrate your commitment and enthusiasm to future employers or further education providers. It will provide hours of valuable experience across numerous topics in different learning settings and will develop your skills and your confidence exponentially



STUDENT AMBASSADORS

Working in close collaboration with Petroc staff, the Student Ambassador Team works to promote the college within our community.

As part of the team, you will attend a variety of events at local schools as well as at the college itself.

You'll be a point of contact for fellow students with queries, ideas or suggestions and will become a well-known and respected face on campus.

Becoming a Student Ambassador is a wonderful opportunity to meet new people, increase your confidence and strengthen your CV.



Celebrating Success...

Our Sustainability Academy students have learnt a range of topics surrounding the UNs Sustainable Development Goals - from Affordable and Clean Energy to Zero Hunger and Responsible Consumption and Production to Gender Equality.



WORK EXPERIENCE

FIND OUT MORE ONLINE
petroc.ac.uk

Whatever subject you choose to study, work experience is an essential part of your course programme, and a successful work placement will really stand out on your CV.

During your studies at Petroc, you will spend some of your time on an industry placement or undertaking work experience. These business-based opportunities could be within Devon, in the wider South West region or even abroad.

We are proud to have developed strong links with local employers who provide exceptional and highly valuable work experience opportunities. They include the NHS, local councils, charities, marketing and media companies, solicitors, accountancy firms, engineering and manufacturing organisations.

The amount of time you spend on your work experience will depend on your qualification and course level - it could be anywhere between 30 and 375 hours. This will be discussed in more detail at your interview.

If you are undertaking a T Level, the 'Industrial Placement' element is an integral part of the course. This placement is a valuable opportunity for you to complete a minimum of 315 hours of relevant work experience and gain the skills, knowledge and attitudes to excel in your chosen field. We believe in the power of self sourcing your industrial placement: approaching an employer that you have aspirations of working with can stand you in good stead for your future career path. But don't worry - the Industrial placements team will have regular contact with you, supporting with CV and letter writing, making applications to employers and also supporting with sourcing a placement if you are unable to do so yourself.

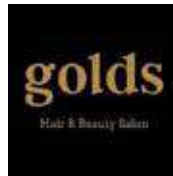


Work experience placements for other courses are supported by the specific faculties and our Advice & Guidance team. We will encourage you to self source a placement but will support you where required.

Sometimes a work experience placement can lead to securing a job or an apprenticeship after you have completed your course, therefore, finding a placement that fits with your career aspirations is an excellent start to your future.

Your chosen course may offer the chance to travel overseas. Petroc Go can provide you with the opportunity to forge new friendships, explore different parts of the world, broaden your horizons and make lasting memories.

WORKING WITH TOP LOCAL EMPLOYERS INCLUDING:



SUPPORTING YOU & YOUR LEARNING

Moving on from school and starting at college can feel both exciting and daunting. There are so many unknowns, new buildings and campuses to navigate, teachers and lecturers to meet and friends to make; it's perfectly normal to feel a bit nervous.

But remember that college is also a place where you should feel free to grow, reinvent yourself and meet like-minded people who share your passions and interests.

Most of all, it is a place where you'll be supported to fulfil your ambitions.

Petroc is committed to ensuring all students learn in a safe and friendly environment by providing the support you need to shine. We're here to help you succeed, during your time here with us and into the future.

ACCESSIBILITY

We're here to make your life easier so that you can focus on your learning and personal development.

Our campuses are accessible for wheelchair users with ramps and lifts situated throughout the college.

We have assistive technology across all curriculum areas and we complete Learning Inclusion Plans with you to ensure that any learning needs you tell us about have strategies and resources in place.



ADDITIONAL LEARNING SUPPORT

Our experienced teams are on hand to help you with any specific learning needs and/or disabilities you may have.

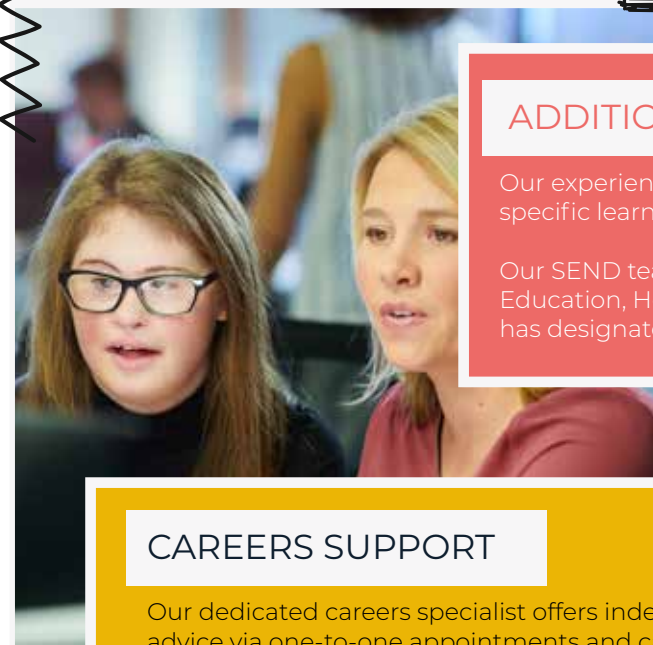
Our SEND team will coordinate support for students with Education, Health and Care Plans (EHCPs) and the college has designated areas and staff to support neurodiversity.

CAREERS SUPPORT

Our dedicated careers specialist offers independent, impartial advice via one-to-one appointments and can help you take the next step in your career.*

This may include guidance on career planning, course and subject choices, post-course options, choosing the university that is right for you, writing a UCAS personal statement, as well as supporting you with job searches, applications and interview preparation.

(*following the Gatsby career benchmarks)



"I have enjoyed how inclusive Petroc is. There have been a lot of events in remembrance to the holocaust, awareness for LGBT etc. There are really nice and supportive teachers and it is a positive learning environment." **TOBY**



CHILDCARE

The Government runs a scheme called 'Care to Learn' for students who need childcare support and who are aged under 20 at the start of their course.

Please contact the Advice & Guidance Centre to find out more about this provision at Petroc and how we can help you achieve the most from your time here.



EQUALITY AND DIVERSITY

Petroc is an open and inclusive college that values diversity and prides itself on zero tolerance towards discrimination of any kind.

As a student of Petroc, you will have the opportunity to explore and celebrate diversity and equality through your study programme and enrichment activities.



FINANCIAL SUPPORT

Education is free for all students who are aged 16-18 (on 31 August of the year you start your course).

There may be additional costs for books or travel, but please do not let money matters stop you from coming to college.

We're here for every learner, so if you need financial assistance to cover the costs of studying or travel, we may be able to help.

Look for more details about the Bursary Fund or bus passes on our website, or call and speak to our friendly Advice & Guidance Team for more information.



SAFEGUARDING AND WELLBEING

The protection, safety, health, wellbeing and welfare of all learners is of paramount importance at Petroc.

We follow the statutory guidance and recognise our responsibility to safeguard and promote the welfare and wellbeing of children and young people.

We are committed to a 'whole college approach' to safeguarding. To this end, we will ensure that all staff are trained in Safeguarding and Child Protection and also in preventing radicalisation.

The college provides a comprehensive wellbeing and welfare service to students. This includes support for housing, financial needs, and the physical and emotional safety, wellbeing and welfare of our learners, all of which can impact a student's ability to study.

Our commitment is that every student at Petroc will have the support and tools they need to achieve their best.



SUSTAINABILITY

At Petroc, we're passionate about sustainability. We believe that there will be no greater challenge to our global future than the current climate emergency.

As a college, we are committed to ensuring that we continuously improve the way our organisation approaches issues of sustainability. We do our part to protect the wider environment by embedding principles and practices that build awareness, highlight responsibilities and meet our own sustainability standards.

Our Sustainability Group meets on a regular basis to discuss cross-college activity, share ideas and consider future initiatives which have included a tree-planting exercise, a pollinator project, sustainability seminars and various on-campus developments to reduce waste and improve energy efficiency.

We are also actively committed to the UN Sustainable Development Goals.



YOUNG ADULT CARERS

If you care for a family member who has a disability, a long-term serious illness, or a substance misuse problem, you may be a young adult carer.

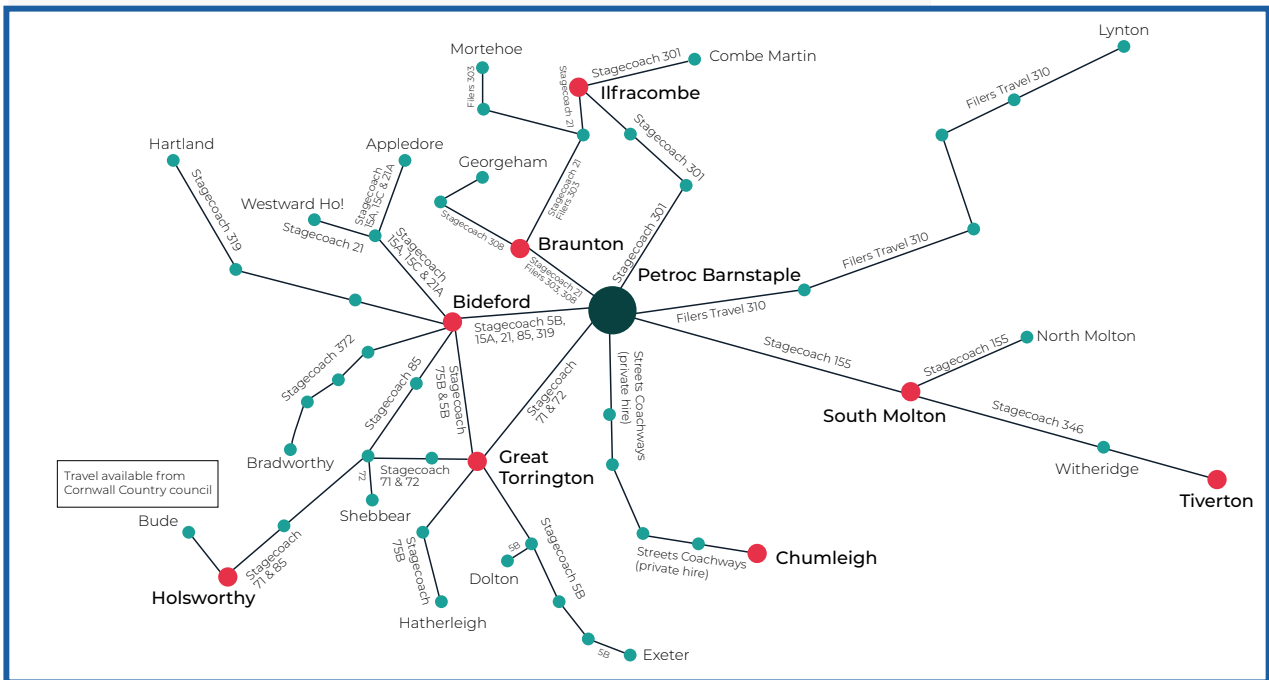
Petroc is committed to helping young adult carers throughout their college experience, and understands that looking after a loved one whilst also being a student can be challenging. We can provide one-to-one personal and academic support, advice and guidance; quiet space to make urgent phone calls; referrals to local services; and, support from our wellbeing team.



TRAVEL

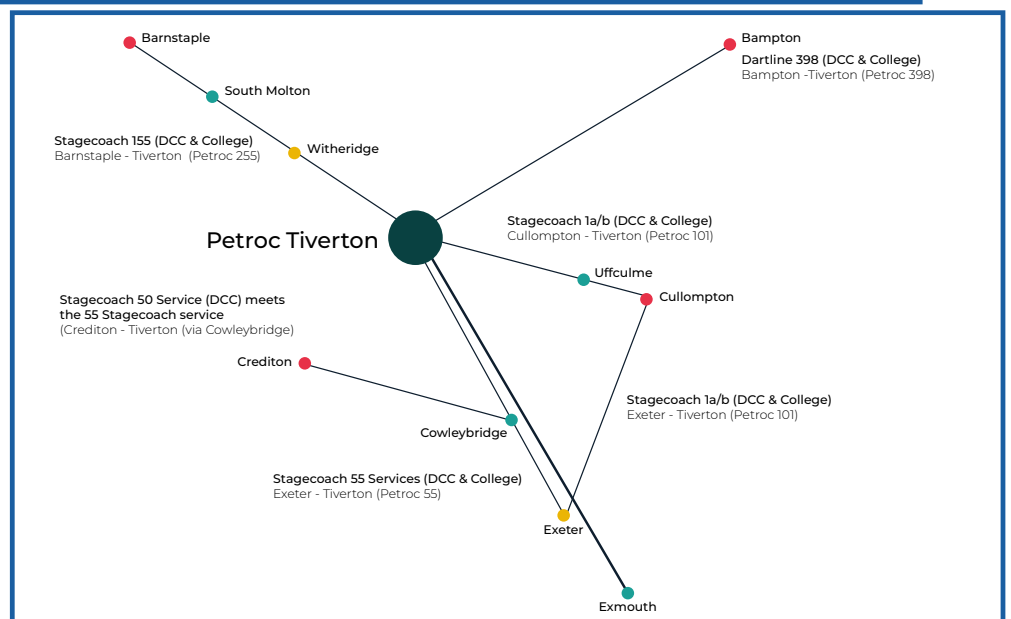
Our college sites are situated on excellent bus routes with ample parking and plenty of cycle shelters at all of our campuses.

We encourage active and sustainable travel wherever possible, and have some great bus pass schemes offering reduced or free travel.



BUS ROUTES - NORTH DEVON CAMPUS

BUS ROUTES - TIVERTON CAMPUS



Contact our friendly Advice & Guidance Team for more information:

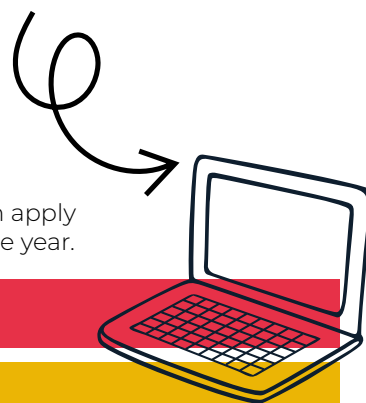
North Devon: 01271 852422 | guidancecentre@petroc.ac.uk

Tiverton: 01884 235330 | guidancecentretiverton@petroc.ac.uk

HOW TO APPLY

Applying for a course (or courses) at Petroc is simple! Once you have decided on the programme you want to study, just follow the steps below.

Don't put off applying if you can't decide between different courses, as you can apply for several courses and finalise your choices or change your mind later on in the year.



1. Go to petroc.ac.uk

2. At the top of the page, select "Courses" and then "School Leavers"

3. Choose between the different types of qualifications available e.g. A Levels, T Levels, vocational or apprenticeships and then select the courses within the areas that interest you. You can apply for as many different vocational course options as you are interested in and/or 3 A Levels..

4. Bring up the course information and then click "Apply". This will put the course in your basket and when you have finished choosing your courses, click on your basket and then "Apply Now".

This will bring you to your checkout where you will need to click on "Continue with application" and fill in your information.

Please provide a personal email address rather than your school email and, as we are aware that you may not know your predicted grades, please put TBC (To Be Confirmed) in the grade boxes and then let us know your GCSE results in the summer.

5. After you have submitted your application, you will receive an email from Petroc confirming your application and information with regards to interview dates within 28 days, so please remember to check your emails regularly!

6. If you would like help with your application or would like to discuss your options, please email schoolliaison@petroc.ac.uk



FIND OUT MORE ONLINE
petroc.ac.uk

COUNTDOWN TO COLLEGE

Choosing a course and starting at college can sometimes feel a little daunting, but don't worry - we're here to help you every step of the way!

Take a look at the step-by-step guide below to understand the process, what you need to do, and how we can support you. If you need more information, just take a look at our website or contact our Advice & Guidance Team.



1. Explore

Take a look through this guide to find the course that's right for you and your aspirations. Get involved in our open events where you can speak to lecturers and current students, and explore our campuses. It might also help to have a chat with your friends, family, teachers and careers advisors about your thoughts and plans.



2. Apply

Once you have decided which course(s) you'd like to undertake, you can apply for them online. You can apply for as many different vocational course options as you are interested in and/or 3 A Levels.. We'll then send you an application confirmation email.



3. Download

When you log into myPetroc you will be able to track your application and upload key documents and information as your application progresses. You'll be provided with login details in your application confirmation email.



4. Interview

You'll then be invited to Petroc to find out more about your course and how it will benefit you. We'll also discuss your predicted grades and any support you may need, as well as other opportunities available such as trips, visits, Academies and enrichment programmes. Once we've met you, we'll offer you a place on a course, subject to the usual entry requirements.



5. Prepare

As the start of term approaches, we'll be in touch to remind you to upload your results, order your books and equipment, arrange your DBS checks (if required), and undertake any relevant work experience. If you don't get the grades you expected, don't panic, just contact us on results day and we'll talk you through your options..



6. Start

At the start of the new term at Petroc, there's always loads of great opportunities to meet new friends and join new clubs to help you get the most out of college life. If you have any questions or concerns when you join us, college staff will be on hand to help and guide you.



PROGRESSION

We are passionate about supporting you throughout your individual learning journey and beyond.

During your time with us, we will ignite your curiosity by helping you determine your aspirations and career pathways. We will find the right course, with the right support and the right outcomes for your next steps, your aspirations and relevant career pathways so that you can make an informed decision on what is right for you.

Whether you decide to head straight into employment, begin an apprenticeship, move onto the next level of your course or apply for a place at university, we'll be right there with you.

There are a wealth of options open to you that can improve your employability, earning potential, personal growth and development. We'll work with you to match them with your interests, skills and career aspirations and can provide you with the tools, information and guidance you need to make the right choices for you and your future.

Whether you have a career goal in mind or are open to a wide variety of potential roles, we've got the experience, knowledge and ambition to get you moving in the right direction.

UNIVERSITY-LEVEL COURSES AT PETROC

Did you know we offer a number of degree-level courses at Petroc?

Whatever your career and education goals, our lecturers, tutors and expert Advice & Guidance Team will support you in developing the right skills to achieve your ambitions.

If Devon is already your perfect location, the University Centre at Petroc offers a fantastic range of courses including Higher National Certificates (HNCs), Higher National Diplomas (HNDs), foundation degrees and honours degrees.

These qualifications are offered across a wide range of subjects including health, education, the creative industries, engineering, computing, construction, business, animal conservation and environmental management. All of which can offer you exciting careers close to home or further afield.

Our degrees are validated in partnership with the University of Plymouth and all our courses focus on developing skills and experience in your chosen subject area. Our programmes also focus on working in teams and learning through community-based projects. Plus, all our courses are delivered locally which means you don't have to pay the living and travel costs some students face when they move away to complete their studies.

The University Centre at Petroc degree-level courses will help you to achieve your full potential and realise your dream career. For more information, visit petroc.ac.uk/degrees



discover more!



37
different
courses



"During the course, our tutor invited a lecturer from the Higher Education part of the College to talk about our next steps. This really made me think about what I wanted to do next. I didn't want my education to end after completing the Level 3 qualification, I wanted to go further in education, so I applied for the degree course at Petroc. I absolutely love living in North Devon and don't feel the need to move away to study. So this course is perfect for me!" **KEZIA**



OPEN EVENTS

Open events are the best way to get an insight into life at Petroc, ask questions and find out more about what we can offer you.

Come along to one of our events to find out more information:

- Speak to our expert lecturers and find out more about our courses, outstanding results and progression routes.
- Meet current students who will be able to give you a first-hand account of what it's really like to study at Petroc.
- Tour our excellent facilities and see where you'll be studying, playing, relaxing and socialising.
- Get help and information from our friendly Advice & Guidance Team on questions about transport, bursaries, learning support and your application.



Our Open Events for this academic year will take place on the following dates

North Devon campuses

Wednesday 18 October 2023

Saturday 25 November 2023

Tuesday 30 January 2024

Wednesday 13 March 2024



Tiverton campus

Tuesday 10 October 2023

Tuesday 16 January 2024

Tuesday 19 March 2024



discover
more!

Visiting us on campus will give you a feel for student life and our exciting college community.

Here's how our events have helped some of our current students:

"I'd heard great things about previous students' experiences and loved the atmosphere on my open day." **DANNI**

"After the taster day, I knew that I wanted to come to Petroc; the staff were all very accommodating and made me feel very welcome." **TIANA**



We look forward to welcoming you!



Find out more at petroc.ac.uk/open-events



PETROC OFFICIAL



@PETROCOFFICIAL



PETROCOFFICIAL



PETROCTV

FIND OUT MORE ONLINE
petroc.ac.uk

#discover
PETROC

IMPORTANT INFORMATION

Whilst every effort is made to ensure that this course guide is correct at the time of going to print, changes may occur to the courses/fees we offer and/or the services and facilities available.

Any changes may result in a difference to the course fee as advertised on our website (where the student is a fee payer). In some cases where there are insufficient enrolments, you may be offered the chance to pay a higher fee for the course to continue.

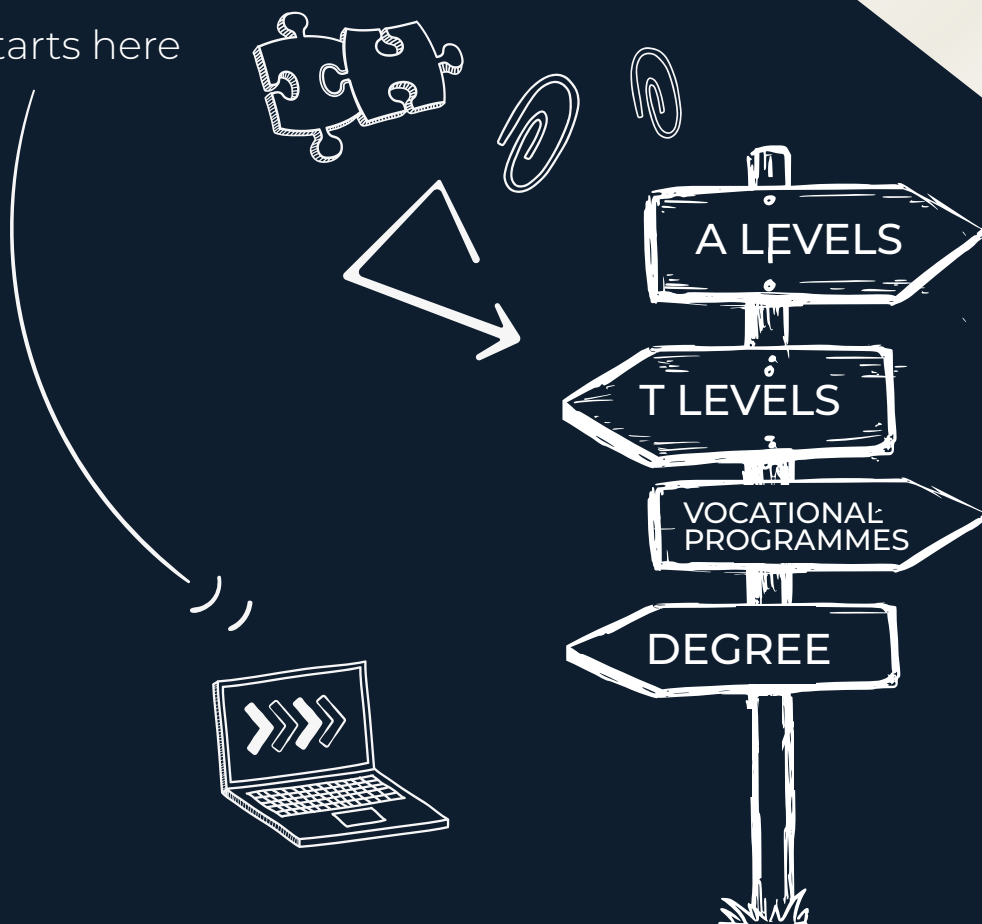
Award and assessment fees are also subject to occasional changes by the Awarding Bodies. You will be contacted should the amount change prior to starting the courses you have enrolled on.

The college cannot guarantee that completion dates and result notifications for courses that require internal and external verification will always coincide with the end dates of the courses listed.

This publication can be made available in other formats or in languages other than English. Please contact our Advice & Guidance Centre: (North Devon) 01271 852422 or (Tiverton) 01884 235200.

Please refer to petroc.ac.uk for up-to-date information.

your future starts here



NORTH DEVON CAMPUS

Old Sticklepath Hill
Barnstaple
Devon
EX31 2BQ
01271 345291

TIVERTON CAMPUS

Bolham Road
Tiverton
Devon
EX16 6SH
01884 235245

petroc.ac.uk



WORLD
LAND
TRUST™

www.carbonbalancedpaper.com
CBP008067